

# in the woods

| The feeling for a good living space |





李智翔  
2008- 水相設計 設計總監 Waterfrom Design  
2004-2008 荷果設計 設計總監 Hercore Design  
2001-2003 MMoser 香港商穆氏設計集團  
2000-2001 李瑋珉建築師事務所  
1998-1999 丹麥哥本哈根大學研究課程  
1997-2000 美國紐約Pratt Institute室內建築碩士

NIC LEE  
2008-Director, Waterfrom Design  
2004-2008 Chief design director, Hercore Design  
2001-2003 Designer, M. Moser, Hong-Kong  
2000-2001 Designer, Wei-Min Lee Architect and Associate  
1997-2000 M.A. Pratt Institute

設計者」水相設計/李智翔  
參與設計」黃培倫  
攝影者」Sam+Yvonne  
空間性質」住宅空間  
座落位置」台北新店  
室內面積」33坪  
主要材料」大幹木皮、竹皮、風化板、OSB板染色、大理石晶粉地磚、不鏽鋼、大理石  
設計時間」2009年2月至4月  
施工時間」2009年5月至8月

Designer」Waterfrom Design/ Nic Lee  
Participant」P. L Huang  
Photographer」Sam + Yvonne  
Category」Residence  
Location」Shindian, Taiwan  
Size」110m<sup>2</sup>  
Material」wood veneer, bamboo veneer, weathering stone plate, OSB board, marble tile, stainless, marble  
Design period」February-April 2009  
Construction period」May-August 2009



談這個設計案，一定得從居住者——這位核心靈魂人物談起。從屏東渡假別墅《國境之南》實驗建築與開窗比例、空間的雕塑家具化；一直到科技辦公室《sivision》玩folding打破空間與量體的相對關係，到這個合作的第三間房子，他一直是位勇於嘗試各種提案挑戰的業主。然而，在僅有33坪的空間基地，卻須滿足業主四房(主人房、父母房、兩小孩房)需求，同時，也希望再嚐試不同的空間調性，因此有了《in the woods》的誕生。

#### 一隻停駐在都市森林的鳥

故事由一隻停留在樹梢上的不鏽鋼鳥兒勾勒出整個空間的故事主軸，就像主人翁的開朗性格不受拘束，因為本案基地豎立在一群低矮公寓間，高樓層視野可俯瞰樓景與新店溪河濱，於是設計師運用材質、色彩與比例分割，試圖在現代化的都市中創造一個寧靜森林。如，空間中的餐櫃是設計師手繪草稿再以木頭雷射切割

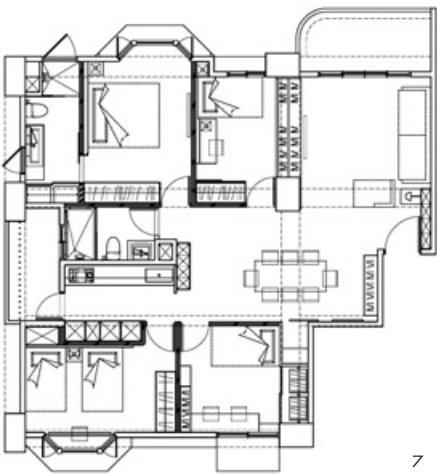
割出森林的造型，搭配三種灰階的色彩配色。同時，也以更內斂潔淨的手法鋪陳空間，如玄關壁面的木作小立燈，搭配以馬鞍皮貼附於檯面，創造90度垂直的倒影，趣味感延續了設計師一貫的灰諧幽默手法。

#### 一間熱帶叢林裡的精品旅館

為了加強空間景深輪廓，鄰著客廳的小孩房透過半穿透的材料剪輯手法，延長空間深度，並以水平式的軸向串連整體空間，不同材料的重新組合賦予空間豐富性。其中，在都市與森林的衝突對比下，設計師試圖實驗一種「原始的精緻感」，以原始的形體融合精緻的觸感，創造出趣味及反諷。如大幹木皮樹紋的面材、水波紋理的灰色粉晶地磚、藍色流水的燈光投影，甚至是雷射切割的樹形櫃體等，在這些自然的素材中，卻以中性色彩（如白、灰色）來詮釋都市裡的森林面貌。

1. 設計師運用材質、色彩與比例分割，試圖在現代化的都市中創造一個寧靜森林。2. 入口玄關一旁木作小立燈，搭配以馬鞍皮貼附於檯面，創造90度垂直的倒影。  
1. Well proportioned and color application provide an impression of tranquil woods 2. Reflection of the hand-crafted wood lamp on a shiny leather clad table







### 一道流動的裝置藝術牆

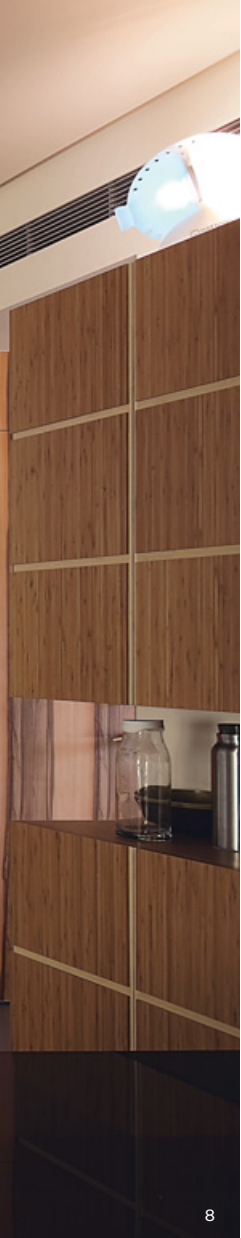
多機能房間所產生的缺口問題，也一併在餐廳立面牆獲得解決。李智翔將不同空間入口整合為一道牆面，從餐桌望去，配電盤、儲藏間、小孩房門、父母房門與廚房間，分別利用風化板、立體幾何拼接板與大幹木皮拼貼，將原本切碎的空間組成一幅橫軸立面風景。值得一提的是，其中的一面白牆，搭配特別為屋主選購的投影燈具，投影出一幅流動影像的裝置藝術，賦予牆面動與生命力(燈具也能裝載幻燈片)。李智翔表示，當未來空間材料以「虛擬影像」與「實體空間」結合，將帶給未來生活更多不確定性的自由與驚喜。當牆不再是牆，而門不再僅是入口，透過設計者能夠運用的現代媒材的豐富性，空間將脫離介面框架的限制，也更能夠反應生活多向度的豐富層次。文」水相設計

3. 整個空間以更內斂潔淨的手法鋪陳出生活裡經得起咀嚼的細膩質地。4. 木作小立燈以馬鞍皮貼附牆面，刻意製造的倒影，延續了設計師一貫的灰諧幽默手法。5. 在自然素材中，刻意以中性色彩（如白、灰色）來詮釋都市裡的森林面貌。6. 設計師以「原始的精緻感」作為設計主軸，運用原始的形體融合精緻的觸感，營造極為舒適的居家氛圍。7. 平面配置圖。

3. This residence features a good ambience for living 4. Reflective images features an impression of a cozy and homey delight 5. White and gray colors compose the main color tones of the space 6. "Rustic exquisite" is the main concept of this residential design 7. Plan







8



10

This the third time that Nic Lee has cooperated with this client; the first was a villa in Pindong with experimental open style and proportion; the second was a high-tech office "Sivision", with various volumes of different folding geometrical bodies; and the third is this project "in the woods", an apartment project for the family. The project is only 33 ping, and its interior had to accommodate four bedrooms including the client's bedroom, his parent's room and two children's rooms.

#### **A bird lingering in the city woods**

The building that houses the apartment is surrounded by low rise apartments; it is like a huge tree popping up from a jungle and is the high-point for looking into the distance. The designer's selection of materials and color gives this living compound a tranquil melody and resembles a quiet spot in the woods. Images of tree and silhouettes of a forest are cut into the millwork, colored in gray, and then clad on the cabinets. Hand-tailored craft furnishing elements such as the lighting fixtures bring a natural delight everywhere in this residence.

#### **A boutique hotel in the jungle**

To increase the spatial layering, the designer used many opaque materials and integrated diverse spaces into linear sequence. Rich materials were used in experimental ways to create a quality which the designer calls: "exquisite rustic." The quality is featured in a seemingly natural and organic visual impression that is exquisite to the touch; irony stimulates everyone's emotional response to what is seen and touched.

#### **A wall that wiggles like a sofa body**

A continuous partition starts from the dining space and accepts an opening from each room. Access to the electronics is featured in weathering board and reveals a dynamic geometrical formation. Another totally white partition is used as a projection screen. The contrast of a solid wall with an opening and a solid wall carrying liquid messages infuses life with a dynamic energy. Doors that puncture the solid wall are like a gateway to a dream-world that only belongs to a personal past and memory. Translated by Ray S.C.Chu & David Mark Riz



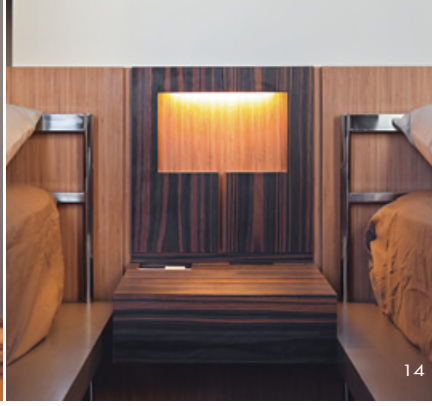
11

8. 多機能房間所產生的缺口問題，也一併在餐廳立面牆獲得解決。9. 大幹木皮樹紋的面材被設計師視為用來詮釋都市裡的森林面貌的隱喻。10. 餐廳中的餐櫃，由設計師親手繪製草稿，再以雷射切割出森林的造型，搭配三種灰階的色彩而成。11. 廚房。  
8. A long partition accommodates the openings of the bedrooms and other functional needs 9. Wood texture gives the best hint of nature, like lodging inside the woods 10. "Forest" in the dining space; a profile of the forest in a gray color is joined with the cabinet design 11. Kitchen









12. 13.14. 細部。15. 主臥衛浴間。16. 主臥室。17. 小孩房。  
12. 13.14. detail 15. Master bedroom 16. Master bathroom 17. Child's room

