

WESCO

設計者」水相設計 / 李智翔
參與者」陳凱倫、陳曉伶
攝影者」Sam
空間性質」辦公空間
坐落位置」台北
主要材料」洞石、黑金峰石、鍍鈦鐵件、義大利黑檀木、橡木、馬鞍皮、條紋玻璃、地毯
面積」95坪
設計時間」2010年08月至10月
施工時間」2011年11月至02月

Designer」Nic Lee
Participants」Kevin Chen, Joanne Chen
Photographer」Sam
Category」office
Location」Taipei
Materials」cavity stone, black Golden Blaze stone, Titanium plated metal member, Italian juniper wood, oak wood, saddle wood, stripped pattern glass, carpet
Size」314㎡
Design period」August - October, 2010
Construction period」November 2010 - February 2011

李智翔, 1972~

畢業自紐約PRATT INSITITUDE室內設計，2008年成立水相設計，擅長幽默的設計語彙與賦予空間強烈故事性，具有不按牌理出牌的设计特徵，並榮獲2007~2010年間台灣十大室內設計師之一。
得獎紀錄/2011台灣室內設計大獎 住宅空間類TID獎 · 2011國家金點設計獎 · 2010台灣室內設計大獎《2007~2010台灣十大設計師》· 2010 國家金點設計獎 · 2010 台灣室內設計大獎 住宅空間類TID獎 · 2010 亞太空間設計協會 Excellent Award · 2009 台灣室內設計大獎 商業空間類 金獎

Nic Lee, 1961~

Education/ Master in Interior Design ,PRATT INSITITUDE
Experience/ General director ,Waterfrom Design Award/2011 Taiwan Interior Design Award , residence category, TID AWARD · 2011 Golden Pin design award · 2010 Taiwan Interior Design Award, Best 10 interior designer since2007~2010 · 2010 Golden Pin design award · 2010 Taiwan Interior Design Award , residence category, TID AWARD · 2010 Asia Pacific Space Design Award(APSDA) Excellent Award in Beijing · 2009 Taiwan Interior Design Award , commercial space category, Golden AWARD

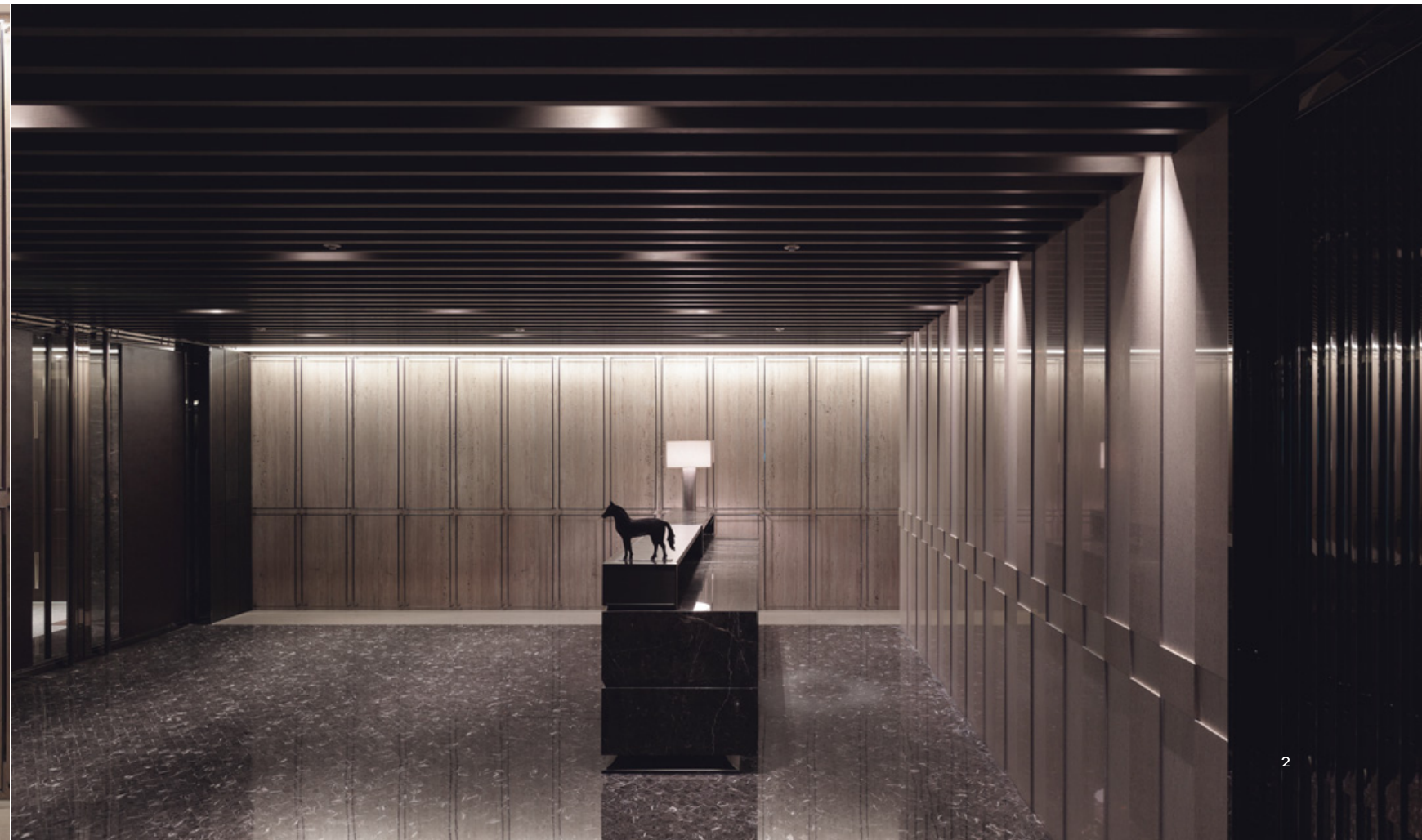


WESCO為塑膠原料銷售的跨國公司，現今於兩岸三地皆設有辦事處，在經手此案之前的設計研究中發現，有別於講究明快工作效率的現代化辦公室，其香港總公司所呈現的工作氛圍，更講究凸顯公司形象與集團實力的呈現。其打破既往認知辦公室冷靜乾淨的白色調性，藉由溫暖穩重的材質色系引領企業文化定位，對於貿易業務頻繁的性質，反而彰顯出其穩重器度的信賴力量。而此次台灣辦事處辦公室設計的幾項核心訴求，如大器穩重、內斂精緻等理念，設計師李智翔以英式書房為概念，以現代空間基調結合材質肌理的厚度，將表層的華麗改以內斂的設計手法呈現，賦予辦公空間一種沉穩內斂的基調，既滿足業主需求，也成功賦予辦公空間獨特質地。採訪」周巽莉

WESCO is a multi-national corporation that has been marketing plastic raw materials for the last twenty years. Before the actual design work began, Nic made a research of its branch office design in HK; he found Hong Kong's office revealed a post-modern fashion with an ambiguous language that confused the quality of the space. To satisfy the client's requests and spatial needs, Nic proposed to use the English reading room as an imagined picture of the office. Nic believes that an office space is an unmistakable representation of company culture; WESCO's tradition links to a modest and low profile, so that the impression of an English gentleman's library is a perfect impression for the company and its culture.

1. 櫃台側立面以洞石+金屬細框裝飾。2. 接待大廳，地板以黑金峰石切割至4*8cm大小，以人字形拼貼。

1. Reception space and its partition surface treatment - cavity stone framed by thin metal wiring 2. Reception hall and herringbone pattern floor





3



4

設計概念

本案設計主軸為在現代幾何線條的陣列下，追尋古典主義的均衡美好。透過框線產生水平軸與垂直軸的秩序性延伸，引導觀者層層推往一進又一進的空間，如此，一來顛覆辦公空間予人過於理性平實的既定印象，也成功整合出一致性的空間語彙。

在立面的造型分割與材質運用上，借用裝飾藝術風格中三角幾何造型的規則排列，大量使用皮革與鍍鈦板。入口大廳的人字型大理石拼接，意外產生跳躍紋理的奢華光澤感；並藉由虛實相映的格柵或玻璃，將自然光或是藝術光源隱晦地埋藏在彼端空間，賦予遐想空間的趣味。

甚者，以法國藝術家Pierre Soulages的ultra black美學為精神，即便是一種黑也透過不同角度的光線與紋理展現不同表情，正如同在此案刻意選擇了不同紋理的木皮，栓木、烏翅木、黑檀木等材質的轉換，讓沉默的黑色不寧靜，形成層層豐富的結構，衍生充滿律動的空間感，也為整體營造出一種英式書房的內斂韻致。

Design Concept

The office has an identical feature close to the perfect paradigm of a classic layout. Perspective control and systematical deployment of the geometrical plan gives the space deep spatial depth. The office has a prominent order of space with an inspiring delight that eliminates the rigorousness of a typical office space.

A triangular pattern derived from Art Deco motifs is transformed into shining titanium plated panels and rustic leather skin. Herringbone interlaced marble on the floor of reception hall gives the office a luxurious fashion. Natural light patterned down on the floor comes from glass panels and window grating patterns. The high contrast of lighting gives the space a sense of melancholy interest.

French artist Pierre Soulages' ultra black concept is clearly visible in the space; he proclaims that even the darkest black has different levels and gradated textures observed from different angles. There are many black colors and each appears on different material surfaces. Black material used in the office is not a static dead voice yet echoes with its various textures and visual layering.

3. 梯廳入口。4. 接待等候區。5. 企業Logo以黑色髮絲霧面鍍鈦板做雷射切割處理，作為服務櫃台裝飾的一部分。
3. Staircase lobby 4. Reception area and waiting space 5. Company logo design - laser cut metal pieces with titanium plated treatment on the surface

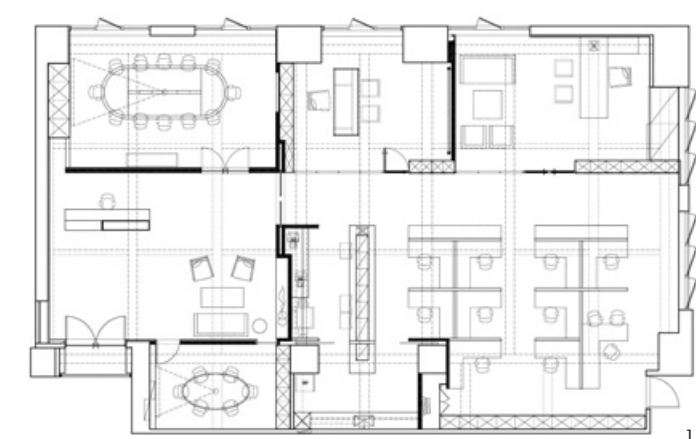


5



6. 接待大廳與會議室間以金屬格柵門片銜接。7. 會議室視訊立面以義大利櫟木分割拼貼結合鍍鈦板及45度倒角分割縫處理。8. 會議室正立面以玫瑰金鍍鈦板做幾何分割，底層為鐵刀木和皮革。9. 自接待大廳望向會議室，藉由實相映的格柵或玻璃，賦予空間趣味性。
 6. Grating metal door linking reception and conference room 7. The surface treatment in the conference room reveals Italian black wood patterned with metal panels 8. Conference room and its surface treatment in metal, hardwood and leather detailing 9. Vista view from reception towards the conference room





10. 主要辦公區，以開放式空間結合木作訂製辦公桌呈現。 11. 事務區以一格柵界定不同功能區域。 12. 自接待區望向辦公區。 13. 平面配置圖。
 10. Main office space and its systematic layout of solid wood furniture 11. Grating system dividing various zones 12. A view from the reception area towards the office space 13. Plan

11

10

12

13



14

14. 事務區以一長形吧台整合相關機能。15. 主管辦公空間。16. CEO辦公空間。
14. A bar table and its multiple function as storage space 15. Manager level's office zone 16. CEO room

建材分析

Lobby: 黑金峰石被運用於梯廳入口框形空間(地面、立面及天花)。地面以黑金峰石切割至4*8cm大小，以人字形拼貼。櫃台側立面以洞石+金屬細框裝飾。櫃檯後方立面：摩卡棕大理石以亮面和噴砂面兩種質感拼貼。入口大門：馬鞍皮+鍍鈦板。

會議室: 正立面牆選用鐵刀木+鍍鈦板(玫瑰金)+皮革。視訊立牆以義大利檀木分割拼貼+鍍鈦板及45度倒角分割縫處理。其他立面以栓木染色做分割。

事務區: 吧檯面料貼斑馬木皮+皮革，側面貼雞翅木皮。拉門以皮革+鍍鈦板。金屬隔柵以生鏽加金屬漆。其餘部分為壁紙。

CEO室: 全室主要以栓木染色處理。立面造型圓弧飾牆選用斑馬木。畫框底座則為鍍鈦板。

註：鍍鈦板部分共運用玫瑰金亮面、香檳金亮面、黑色髮絲紋霧面等三種表面處理。在立面分割所使用的壓條採用亮面香檳金鍍鈦板。在吧檯Logo以及把手的細節則使用黑色髮絲紋霧面鍍鈦板。

溝通重點

在設計前期的設計研究中，決定定調為英式書房的概念，來呈現該公司文化精神，穩重且內斂地展現企業實力。後續設計則著重於材質處理與分割以整合出一致性的空間語彙。

Material Analysis

Lobby: Black golden blaze stone is used in the main lobby space; stone pavement appears in a herringbone pattern with a single piece cut in 4 by 8 centimeters. Cavity stone is used for cladding on the surface of the reception table. Main partition is clad with polished and sand blasting surface in a light brown color marble.

Main door: leather and titanium plated metal.

Conference room: main partition is covered with hardwood, titanium plated metal board and leather. Projection panels use Italian juniper wood and titanium plated metal in a seamless treatment. Other portions are clad with dyed color wood veneer.

Office Space: bar space uses zebra stripe pattern veneer and leather for cover. Sliding doors are clad with leather and titanium plated board. Metal grating is cast iron coated with metal paint. Wall paper is used in other parts of the space.

CEO Room: dyed wood is used to cover the entire main partitions. Curving positions use zebra stripe pattern veneer.

Communication Note

The design was commissioned from a competition winner. Nic Lee won the competition by proposing an English style reading room and that was accepted unanimously by the board members. English reading room represents quite well the company's culture in how knowledge booms and is accumulated from one generation to the next generation. Nic's effort included the tedious job of coordinating various materials in an harmonious way.



15



16