

# Molecure Pharmacy

## 分子藥局

設計者 水相設計 / 李智翔  
參與者 郭瑞文 張湘涵  
攝影者 圖起乘李國民影像事務所  
空間性質 藥局  
坐落位置 台灣  
主要材料 鵝卵石、原木、金屬沖孔烤漆、壓克力、磁磚  
面積 52 坪  
設計時間 2016 年 7 月至 11 月  
施工時間 2016 年 12 月至 2017 年 4 月

Designer 水相設計 / 李智翔  
Participants R. W. Kuo, S. H. Chen  
Photographer Figure x Lee Kuo-Min Studio  
Category Pharmacy  
Location Taiwan  
Materials pebble, solid wood, perforated metal board, acrylic, tile  
Size 170m<sup>2</sup>  
Design period July – November, 2016  
Construction period December 2016 – April 2017



語彙在高科技和自然間不斷遞嬗，  
空間氛氳時而簡鍊、輕靈、幾何、有邏輯，  
但霎那又是富變化性的有機形體，質地稠穠且線條輓集。

### 分子語彙 遊走材料

分子，是物理化學上一種專有詞彙。根據牛津辭典解釋，分子乃由原子組成，是化合物最小基本單位，能參與化學反應；而分子內相鄰的原子之強烈相互作用則稱之為化學鍵。面對嗣承三代的藥劑師家族職業，職掌新一輩以「分子藥局」重新定位品牌，並期盼空間能輻輳「分子」意蘊。擊劃本案的水相設計先探入分子世界，觀其型態來爬梳，並從中攫捕了連結、聚合性與變形三種特徵，在挪用與轉化下找出擬比對應的室內詮釋，包括線性排列與構件、材料密集叢簇，抑或異材質拼接和鑲嵌等。

馳想分子表現語彙之餘，另一面設計維度則朝向了製藥。李智翔談到現代醫藥是科學意象，但萃取源實則多為萋萋百卉等天然植物，因此藥房嘗試從科技、自然兩種氛圍來鑄和，並提出實驗室裡的綠意此一主軸與概念，對此李智翔談到：「在諮詢過程，業主談到了一間位在紐約、由印度人所開設的藥店“Orange Pharmacy”，裡頭放了許多植栽和樹，蠻嬉皮式的味道。而分子藥局和 Orange Pharmacy 的概念很相似，我們都試圖打造一間不是藥房的藥房。」因此本案語彙在高科技和自然間不斷遞嬗，空間氛圍時而簡鍊、輕靈、幾何、有邏輯，但霎那又是富變化性的有機形體，質地稠穠且線條輓集。

### 長吧檯 解放白袍藥劑師

傳統藥房及其營運模式踟躕不前，新世代藥劑師（業主）有著靜極思動的創新構思，而他所秉持之工作真諦，在於顧客踏進藥房的真實需求是健康而非購藥，因此他冀盼店內鋪陳擺脫販售藥品為主體的窠臼，轉以增加消費者互動性，提供用藥和健康諮詢，甚至囊括平衡生活理念的倡導。為實踐業主所擘想的新藥局藍圖，僅規劃牆面藥物陳列已不敷使用，但這項機能也未能偏廢，故而設計在水平尺度極為迤邐綿長的店面，於中央處置入一道“Laboratory Table”長吧檯來定義場域精神。這道吧檯周邊散置座位，向後延伸尚有茶水吧檯，方便業主處理飲品來服務客戶，藉以和消費者醞釀更多互動。長吧檯將白袍藥劑師從封閉、隔閡調劑室解放，利用走動式解說將單向購藥行為挹注更多談話和人性關懷。

### Nic Lee



水相設計 / 李智翔  
水相設計設計總監  
丹麥哥本哈根大學建築研究  
紐約普瑞特藝術學院室內設計碩士  
重要得獎紀錄 2017 德國 if 設計大獎  
室內建築類 · 2016 A'Design Award & Competition 室內空間展示設計類銀獎 · 2014 亞太室內設計大獎 APIDA Excellent Award · 2013 台灣室內設計大獎 住宅空間類複層 TID 獎 · 2012 台灣室內設計大獎 工作空間類 TID 獎 · 2011 國家金點設計獎 “In honor of Mark Rothko” · 2011 台灣室內設計大獎《2007~2010 台灣十大設計師》 · 2009 台灣室內設計大獎 商業空間類金獎

Waterfrom Design Co. Ltd./ Nic Lee  
Director, Waterfrom Design  
Program Study, University of Copenhagen  
Master of Interior Design, Pratt Institute  
Awards Received  
iF DESIGN AWARD 2017 /Discipline Interior Architecture · A'Design Award & Competition Silver Award of Interior Space and Exhibition Design · Asia Pacific Interior Design Awards of Excellent Award Taiwan Interior Design Award of Residential Space / Multi Level · Taiwan Interior Design Award of Working Space · Golden Pin Design Award “In honor of Mark Rothko” · Taiwan Interior Design Award of Best 10 Designer 2007~2010 · Taiwan Interior Design Gold Award of Commercial Space

- 擺脫傳統藥局類型，利用長吧檯形成走動式動線。
- A long table sets a visual focus and completely converts the impression of a pharmacy



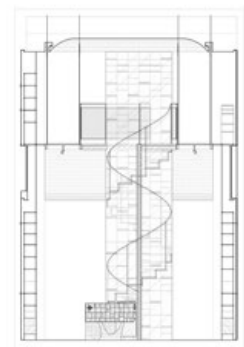
2. 七米高鵝卵石牆竄向二樓空間，牆與樓板間再以玻璃脫開，讓尺度延續。3. 黃銅色金屬架如分子化學鍵，搭配試管則呈現實驗室試管架與儀器的意象。  
4. 懸掛半空的裝置吊件，融合了分子特徵以及科學與自然兩種旨趣。5. 旋轉梯立面圖。6. 一樓立面圖。



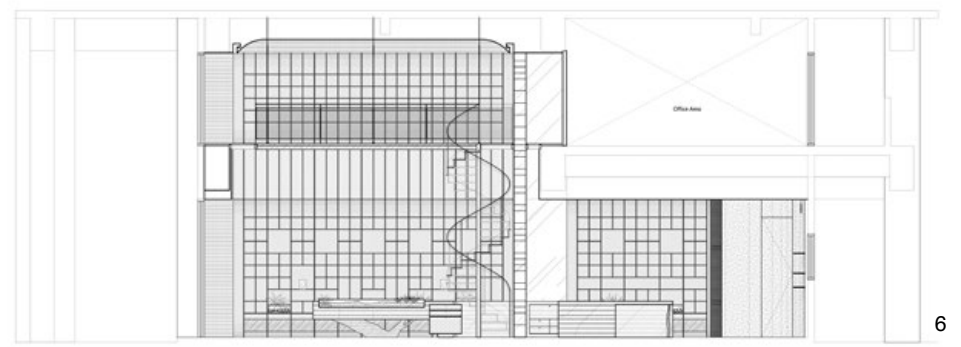
2. The pebble covered grand walls extend up 7 meters to the ceiling 3. Metal wiring sets a pictorial pattern like chemistry bond holds various test tubes 4. Hanging objects signify the mystery of the Universe, formed by nature and science 5. Elevation - spiral staircase 6. Elevation - first floor

分子與製藥之思也一筆筆鑄鑿出“Laboratory Table”長吧檯的形貌。凝觀此量體結構，支撐腳取自一塊適勁碩大的樹幹，檯面則由實木包心柱層層疊砌而成，厚墩墩桌身再嵌入玻璃容器，以苔蘚及枯木花藝巧設成一幅芊萊龍蔥微地景；相同藝術裝置亦延續至後端的調劑室櫃檯。木長桌線條、材料及拼貼方式組織出分子聚合性以及變形意趣，最後再導入草木岑蔚甘潤的韻致來回應自然之思。

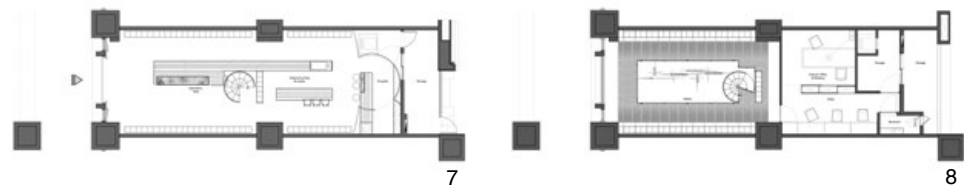
繼之，對應“Laboratory Table”上方挑高處，另能仰瞻半空一片由櫟樛枯木、乾燥永生苔、金屬線條以及試管混搭出的吊件裝置，也一如長吧檯設計，這組似有禪意亦存實驗室況味的吊件雜糅了多種意象。黃銅金屬線條垂直水平交錯相連，儼如分子化學鍵；而扣在金屬層架間的實驗試管則流露科學意象，極杈披離的枯樹與綠茸茸密草則講述了一種林木蘊藹的情霧。地面也用了磨石子地磚創造生氣盎然紋理，彷彿分子連結般的結構性。



5



6



7. 一樓平面圖。8. 二樓平面圖。9. 自壓克力層板向前區瞻眺，能見有機與幾何線條、自然與工業素材彼此交融。10. 空間導入分子概念，再用素材表達科學與自然兩種意境。11. 層架細部，局部立面用鏡體增加視覺效果。  
7. The first floor plan 8. The second floor plan 9. A view casts towards the main space to visualize a strong geometrical order in spatial rhythm 10. The pharmacy features a dialogue between science and nature 11. Detail – stacking cabinet and mirror covering

#### 嶙峋石牆 斑斕藥品的素底

藥局擁七米高尺度，劃為上下兩樓層，為將室內做一個視覺和垂直性延伸，一樓前區不僅挖了中央大挑空來彰顯豁達縱深，左右兩道陳列藥品的背牆更直竄抵二樓，設計再用玻璃作局部樓板，藉透明材料讓牆彷彿脫開而立，而這種表現方法讓視野能無礙地朝上層空間探覓，人躊躇往復藥品區，格外能感受牆垣之高之深。在推敲大面積的背牆材料時，自然情態是設計戮力之處，李智翔嘗試了切割工整的石料與仿材都未盡理想，最後選擇一個韻味渾樸無鑿但費工夫的方法——鵝卵石拼貼，對此他解釋：「摹擬後，覺得用鵝卵石黏貼所砌出的牆面紋理最自然，接著牆面再導入垂直水平的框架與壓克力層板，透過這些構件與牆去做一個最大融合的演繹，以傳遞分子的型態。」

兩片與屋齊高、紋理稠穢的鵝卵石白牆，氣質無垢亦存懋美之量，當同色調與無色調的層架系統置入後，更能看到一種至簡的澹彩，事實上這般素，來自設計預見了藥品歸位後景象——繽紛外包裝填塞壁架的縹緲紛紜。為穩定牆面視覺且使之亂中有序，李智翔引素縹白牆為襯底，同時導入同色彩框架，其間並留白擱置植栽作為一種喘息，即便日後藥品駢闐無縫，色彩斑斕外包裝卻能像顏料般，舉凡團塊式律動亦或不規則參差，在框架切割效果下，堆疊藥品亦能流瀉出一幀類抽象畫構成，一如李智翔所言：「有些脈絡與秩序，形成美的質感。」至於壁架下方的儲物櫃，面板捨棄厚實材料以貼近牆壁輕虛韻味，轉以霧面壓克力形成遮蔽但薄透的質感。

#### 沖孔迴廊 擬樹隙之光

藥局中心點拉起一座清鏤黃銅色、以沖孔板為材的旋轉梯攀躋二樓，這般材料語彙也圈住一樓前區大挑空，在二樓造出一個猶似迴廊般的樓板動線。沖孔板圖騰來自分子型態，皮層罅隙叢集，讓一二樓間形成半隱半透的關係，如此虛實映掩方法目的有二，其一是勾勒七米縱深的垂直連通關係，二是企圖捕捉行走翳蒼樹林間，曙色向重重瓣瓣枝葉滲穿而下的嫵娜清景，藉著孔隙，篩出斑斕光影。對此李智翔談到：「空間希望達到林蔭光影的效果，但人工光源不易達成，也認為刻意營造太具象，因此就採用了沖孔板做鋪面材料，人抬頭往上看，有光灑下來，就像樹隙間光影。」金屬旋轉梯導引上的二樓，空間並非販售藥品處，而是期待日後能作為藝廊或跨界結合的複合式空間。不過藥房屬於極深長的格局，為了不讓這條軸線存在一種過於深密幽曠的味道，也避面場域缺乏層次，設計特別在旋轉梯後方立起一道竄往二樓處的壓克力層架，作為視覺暫留驛站，讓軸線停頓再進。而這儼如屏風的層架在實質機能上乃作為病歷收納櫃，層架並導入色彩繽紛的病歷匣，用裝置藝術概念來豐富整個量體意象，它猶似一件未名之作，題旨存於酣暢蘸抹的顏料。採訪 劉芝君





12. 長吧檯用植栽綠意妝點，溫潤空間氛圍，一側為旋轉梯。13. 位於旋轉梯後方的全壓克力層架，具有類屏風效果，亦是病歷收納櫃。14. 自一樓仰望旋轉梯，洋溢結構之美。  
12. Long table and natural surrounding 13. Transparent stacking rack is like a screen and is used as storage cabinet 14. A view towards the spiral staircase

#### Language of Molecule

Molecule Pharmacy is a three generation family run pharmacy; the new generation's store needed an immediately conversion and transformation. They commissioned designer Nic Lee to seek and find abstractions that would link scientific reaction and visual impression. The form that every molecule carries and the reaction among them was turned into the design inspiration in the spatial layout and relationship that links one space to the other.

At the initial talk with the commissioner, Nic detected something he had been missed about a pharmacy. Nic said: "the client mentioned a pharmacy in New York City called "Orange Pharmacy", which displays many medical herbs in the shop. The space is more like a hippie gathering spot full of mysterious weeds. "They then both come out with the idea that the pharmacy should be tailored not like a typical pharmacy, but more like that the "Orange Pharmacy", which delivers messages of transparency, logic and even mysteriously fluidity.

#### Long Table and a white robe pharmacist

The new generation of pharmacists usually have a negative opinion about the traditional layout of the pharmacy. They believe that a pharmacy should offer service towards good health rather than be a vending shop that sell medicines. Offering consultation is more important than business transaction. The interior of Monocular Pharmacy therefore has a long table extending through the central position that allows sitting and tea to be served. The role of the pharmacist is now as a friend rather than as a salesperson, and the dialogue between them turns to one to full of humanity. The so-called Laboratory Table stands sturdily with legs of

chunky wood log. The table is made of a piece of solid wood, and there are several glass containers fully inserted into the wood. Floral art appears on the table and also on the surface of back partition. The rich material texture meet gracefully with the pictorial pattern of the molecule formation and all mingle into an interesting air that derails the conventional impression of a pharmacy.

The higher ceiling position above the Laboratory Table allows the hanging of an art work of a tangled metal wire and floral arrangement. This occluded piece reveals symbols of chemistry and alchemy; the metal wire represent monocular bond and the natural element represents the alchemy's practice.

#### Solid wall meets endless bottles

The plan is divided into two sections; the front enjoys a 7 meter ceiling height and the rear is a space for prescriptions and a mezzanine level is above the lower space. Two large walls display medicine and they penetrate a glass covered floor of the second to end at the 7 meter height. The surfaces of the walls are covered by pebbles. Nic explained the pebble covered wall displays the most rustic and natural texture and perfectly meets the metal framework and acrylic boards which are subtle and polished.

The recessed positions on the large walls are framed by metal panels and form layers to store bottles and containers. It is imagined as an abstract picture when the shelves are fully packed by containers in different sizes, colors and shapes. Nic states that it is quite possible that the wall will provide an impression among the various orders and deliver a picture of extreme beauty.



15

15. 仰觀一樓挑空，沖孔樓板灑下光線，似有行走林蔭間的光影沉味。16. 二樓樓板與牆面皆延續一樓語彙而來，日後可作為藝廊等跨界結合空間。  
15. A view from the first floor towards the second 16. The second floor will be used for art display and meeting multiple purposes

### Perforated board catches light and make a transformation

A copper color spiral staircase enclosed by perforated boards provides a central focus point. The plan on the second floor extends the staircase landing to a long pathway along the rim of the floor. The use of perforated panel has double purposes; the first is to allow an upward view to penetrate to the upper expanded spatial depth; the second is to allow light to linger on the surface of the upper floor to signify a tree growing in the pharmacy. A tree is a symbol of rejuvenation and the patched light through the perforated holes is like a scene of natural light penetrating from a tree top through to the ground.

The second floor is currently vacant but reserved for future adoption as an art gallery or lecture space. To feature the space in a more dynamic way, a transparent cabinet was installed right behind the spiral staircase. The transient light on the surface of the acrylic panels back-light the front object and reveal the staircase like a piece of art work.

### 建材分析 Material Analysis

1. 地面為仿磨石子地磚。
2. 兩片主立面為白色鵝卵石黏貼而成。
3. 牆面層架系統為白色鐵件搭配壓克力，下方儲物櫃則為霧面壓克力。
4. 長吧檯為實木包心柱疊砌成，下方桌腳為碩大實木。
5. 裝置吊件為黃銅漆金屬、玻璃試管以及枯木植栽搭配成。
6. 旋轉梯以及二樓樓板鋪面為黃銅色金屬沖孔板。
7. 旋轉梯後方的七米高層架為全透明壓克力。

1. Main floor is covered by terrazzo pattern tiles
2. Two main walls are covered by pebbles
3. Cabinet shelves are supported by white color metal frames and covered by opaque acrylic boards
4. Laboratory Table is made of solid wood piece and supported by wood logs
5. Metal wiring supports the hanging glass tubes and dry wood
6. Spiral staircase and copper color perforated panels define the borders
7. Acrylic cabinet against the spiral staircase

### 溝通重點 Communication Note

1. 本案為傳統藥局，新一代藥師希望轉換傳統藥局的運作模式。
2. 業主期待空間能呈現分子（藥局品牌）的精神與意涵。
3. 增加藥劑師與顧客間的互動性。
4. 空間格局、動線和美學皆與市場面藥局不一樣。
5. 業主希望以本案為起點，日後展店的配置能夠貫徹店的營業思維。
6. 本案在探索新空間和新品牌是否能達到成功。

1. The design had to convert the conventional impression of a typical pharmacy
2. Brand creation was an important issue to be considered
3. To create interaction between the pharmacist and customers was important
4. The new design must be different from current vendor style pharmacy
5. This is the first shop and is expect to expand to others in the future
6. The design was to be the first trial of new generation pharmacy

