

Images of Heart

心靈顯影

| Irresistible Predilection |





陸希傑

1965年出生於台北，1993年取得英國AA建築聯盟碩士學位，曾於Raoul Bunschoten 事務所擔任設計師，而後回國成立CJ STUDIO，從事建築及室內設計、家具設計、產品設計等相關研究開發。

代表作品有：國聯飯店(2001年入選「Design Hotels國際飯店聯盟」)、寶騰璜及張李玉菁[wum] 旗艦店及台中Tiger city概念店(2005年獲得日本JCD設計大賞)、Aesop 微風店(2006年獲得日本JCD設計大賞,與IFI 2007設計大賞)、Aesop信義誠品店及住宅作品獲得TID Award 2007...等。2003年成立個人品牌-shichieh lu。

Shichieh Lu

Born in 1965, Taipei, Taiwan. BArch in Tung-Hai University, Taiwan. Received his Diploma in Architecture from Architectural Association, London, in 1993 and worked for Raoul Bunschoten in 1994. Established CJ Studio in 1995.

Major projects are United Hotel (selected as a member of "Design Hotels" a well-known international hotel chain.), YCAMI showroom, [WUM] store, Stephane Dou and Chang Lee Yugin's shop in Tiger city (JCD Design Award 2005), Aesop store in Breeze center (JCD design Award 2006, IFI Award 2007), Aesop store in Eslite book store, some residence projects (TID Award 2007) and a book entitle "forging parallax". Since 2003 he has established his own brand -"shichieh lu".

設計者」陸希傑

參與者」鄭家皓 曹車政 劉致佑

攝影者」湯馬克

空間性質」住宅

坐落位置」板橋

主要材料」栓木地板、烤漆白牆、印度黑花崗岩、鐵板烤漆、六角馬賽克

面積」46坪

設計時間」2007年5月至2008年4月

施工時間」2008年4月至2008年12月

Designer」Lu Shichieh

Participant」Chiahao Cheng, Ben Tsao, Athena Liu

Photographer」Marc Gerritsen

Category」apartment

Location」Banchiao

Materials」wood floor, painted white wall, Indian black granite, painted metal board, mosaic in hexagon pattern

Size」152m²

Design period」May, 2007 - April, 2008

Construction period」April, 2008 - December, 2008



住宅空間有時像是人類心靈層面的顯影，隨著年齡增長，所在乎與重視的反面從表象的炫目彰顯，轉向表層底下的低調與含蓄，還有與機能需求交織出一種接近恆定的關係。

對於陸希傑，每次採訪總讓我在腦中浮現著些許期待，期待著每次新作中，又如何展現他對空間與形體純熟的掌握度，如何伴隨著創意發想而產生？乍見到此案時，一樣簡約內斂的語彙、成熟的空間處理，在他拿出平面圖後，再度讓我感到某種驚喜。原來，這次他將創意完全隱身在平面配置的學問裡。透過不規則、多角形的有機架構，一併解決對空間尺度的需求，同時也創造出一種流暢、靈活的空間感受。

流暢 有機

此案為一舊屋改建，乃是業主委託設計師為他的父母老家重新整修。由於是長輩的居住空間，對於空間品質與細節的要求，少了年輕世代不

拘小節，多了熟齡世代對於彈性便利與無障礙使用的堅持。陸希傑表示，由於業主對於需求機能與人體工學的高度要求。為了在有限的空間配置下，同步達到需求機能及相對充足的空間尺度，遂在平面規劃上，大膽地放棄以往的垂直水平思維思考平面，而以有機形體、居住者意識中心的概念，來解決不同空間對應的大小需求。

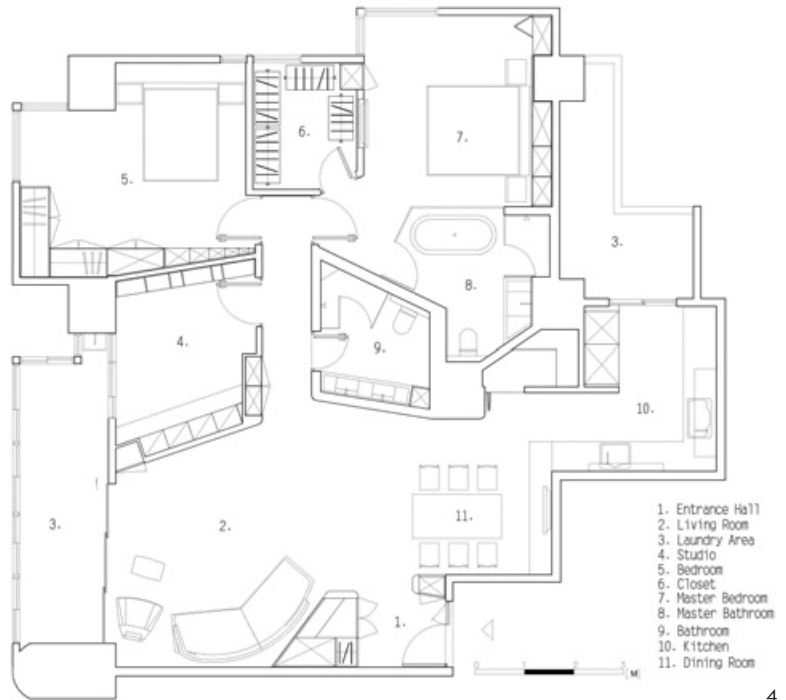
在有限的空間框架下，設計師視實際機能需求以「有機」的方式形塑空間，讓包被的不同空間之間，如客廳、餐廳、廚房、工作室、衛浴間和主臥室等，像是有彈性的肌膚一般，形塑各自的機能活動。如此，不但打破大家習以?常以垂直水平線條來界定的空間概念，也讓整個空間更為流暢、舒適，更易形塑居家氛圍，同時，也帶給業主一種新的空間體驗。

有機形體的結構，以流動空間的概念串接，藉由形的解放有助於解決問題。陸希傑指出，所有空間均是根據需求量身訂作，同時利用斜面角度，讓有限的空間看起來更大更舒適。諸如，看電視的恰當座位水平距離與視角、空間清潔的易維繫度、物理性動流與通風、幾乎無障礙的地板，減少高低差，還有整體視覺的流暢性，讓空間久看不膩等...

1. 此案主題就是要完全以形隨機能的概念來設計，將外觀最簡約至毫無矯飾。2. 透過斜角所構成的有機空間，使空間發揮最大的可變性效果。

1. "Form follows function" guides the agenda of this apartment design 2. Slanting partition and soft angles increase the visual dynamics of the space





3. 以「有機」的方式形塑空間，讓不同空間像是有彈性的肌膚一般，形塑各自的機能活動。4. 平面配置圖。

4. "Organic beauty" gives the apartment a totally free experience for living 4. Plan

陸希傑說，此案主題就是要完全以形隨機能的方式來設計，將外觀最簡約至毫無矯飾。將細膩感體現於立面的處理，減少因介面轉折所產生的線條，甚至轉折的弧度也被仔細斟酌過，以便呈現出最流暢自然的視覺感受，甚至達到讓居住者理所當然地認定空間應是如此，呈現出居住者最該擁有的單純生活本質。

視覺 流通

玄關的部分利用商業空間的手法以鐵件骨料規劃出衣帽間及鞋櫃，表面以透氣的面網材質包裹。透過斜角所構成的有機空間，使空間發揮最大的可變性效果，使整體呈現出如日式熟齡住宅般的縝密思維。天花板的造型為創造出雕塑燈具的效果而鋪陳，通往臥室的走道，經由斜面處理與端點天花板拉高創造出天光灑下的效果，增添空間轉折過程的趣味性。另外則是商空手法的延伸，將空調的回風、出風與燈具整合成一線性元素呼應斜面立牆。

創意的發揮有時是以炫目的姿態呈現，有時，則是內隱式表達，不依靠形體，而是讓質地、氛圍來自自我表述。陸希傑顯然地藉由此案展現他收放自如的設計火候，同時也道盡了設計最迷人玩味的關鍵。採訪 周巽莉

Living space is an image of soul. It's easy too observe that life always follows traces of attraction of fantasized romance to conservative subtlety.

I was always interested to know how Mr. Shichieh came out with his ideas and finally built this work. The visit gave me the answer and inspired me with total surprise; he told me that the design for this middle size apartment came from a simple process; every solution can be detected by reading the plan. It shows a hexagon order in space while the spaces vis-à-vis each other come out as fragments free in organic pleasure.



5

5. 立牆以木作烤漆處理，便於清潔整理。6. 通往臥室的走道，經由斜面處理與端點天花板拉高創造出天光灑下的效果，增添空間轉折過程的趣味性。7. 廚房。8. 所有空間均是根據需求量身訂作，同時利用斜面角度，讓有限的空間看起來更大更舒適。9. 公共衛浴間。



7

Liquidity and organic order

The renovated project was commissioned to give the client's elderly parents a better space to live in. The challenge was not stylistic interest but focused on functional satisfaction particularly on the spatial support for the handicapped and flexible use of the existing space. Shichieh believed that the solution had to be free from conventional layout patterns while searching for a "three-dimensional mechanism" to satisfy the program.

"Organic freedom" when fit into a precise order, provides the inspiring solution of the apartment as it was finally visualized in the living room, dining room, kitchen, work space, bath, and rooms which melt into that same box while could be used for others. The space is finally not to be read as many single rooms confined by borders but rather they all join together to form a liquid experience of life.

Shichieh said that every successful design needs to be very particular to its actual users and need; none is the same. This unique apartment is anchored by its precise spatial layout and every detail. The detail design includes the slanting walls that give a more ample experience of the space, and the non-height gap flooring increasing the comfort of the dwellers who suffer from chronic walking problem.

This apartment reveals a sensible touch of visual and psychological comfort; no acute angles are encountered and carefully controlled details assure living safety and comfort of mind.



6

5. Painted partition is very easy to maintain 6. The pathway leads towards the bedroom; light comes down from ceiling well looks like actual light coming down from the skylight 7. Kitchen 8. Slanting wall gives a visual comfort for the space 9. Bathroom



8



9





11

Visual multiple-layering

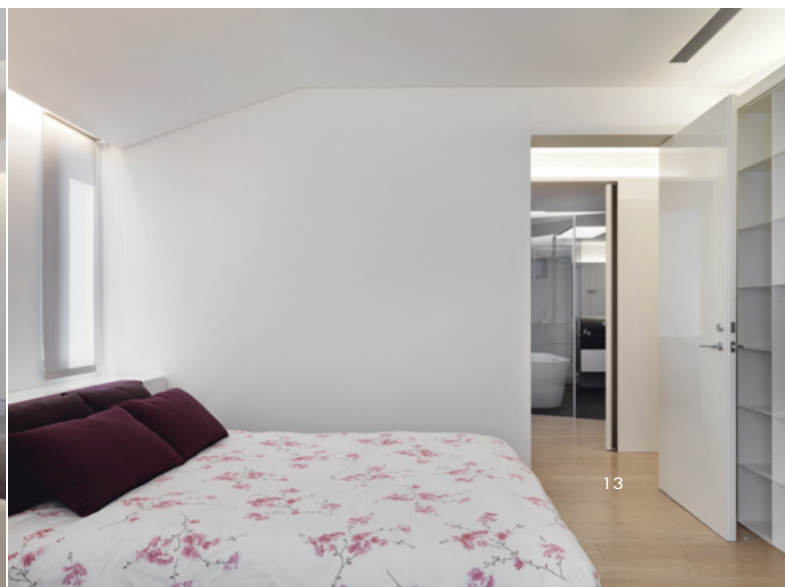
The lobby space features a modern style shoe cabinet built with a metal skeleton wrapped on the surface with a woven fabric material; then a slanted partition leads one's vision to penetrate into the apartment. The ceiling gave another interesting focus; the smooth surface anchors several sculptural lighting fixtures while the perspectival end features a dented space introducing light downward like a skylight. Careful detail treatment combines a ventilation outlet and lighting fixtures into the same pattern on the ceiling surface.

What makes Mr. Shichieuh's design so intriguing is that it comes directly from his dependence on judgment; this apartment is definitely not close to his commercial works only because this work is designed for people who seek for peace in daily life. Translated by Ray S.C.Chu & David Mark Riz

10. 工作室與客廳的空間流動關係。11. 主臥室。12. 主臥衛浴間。13. 客房。
 10. Liquid melody in working space and living room 11. Master bedroom 12. Master bedroom 13. Guest room



12



13