

A Bliss - Home

幸福·家

設計者 | 石坊設計 / 郭宗翰
參與設計 | 陳婷亮 戴伯宇
攝影者 | Kyle Yu
空間性質 | 住宅空間
空間地點 | 臺北市
建築形式 | 電梯大樓
室內面積 | 45坪
使用建材 | 實木、石材、鐵件烤漆、實木地板、玻璃、鐵件
設計時間 | 2010年9月至12月
完成時間 | 2011年1月至4月

Designer | Stephen Kuo / M. Design
Participants | T. L. Chen, B. Y. Da
Photographer | Kyle Yu
Location | Taipei
Category | apartment
Size | 149㎡
Materials | solid wood, stone, paint metal member, wood floor, glass, metal
Design period | September-December 2010
Construction period | January-April 2011

石坊設計 / 郭宗翰
2002-迄今 石坊設計 總監
2005-2011 實踐大學 設計學院講師
2000-2002 香港商穆氏設計 設計師
1999-2000 英國北倫敦大學建築設計系 碩士
1995-1999 英國倫敦藝術大學空間設計系 學士 / 國家檢定 倫敦市政府大學藝術設計

2002-present time Materiality Design / Director
2005-2011 Shih-Chien University, College of Design / Lecturer · 2000-2002 M. Moser Associates, Hong Kong / Designer · 1999-2000 MA in Architecture & Interior Design / University of North London · 1995-1999 BA in Interior & Spatial Design / University of the Arts London Diploma in Foundation of Art & Design / London Guildhall University



好設計是用思考的結晶，設計能改變家庭成員的生活與溝通方式，揭示屋主心底的真正想望。因此，好作品有其靈魂，它能讓人理解居住者對生活的態度，表達出一個家的精神核心。這個家，在舒適宜人、簡單清爽的調性裡，包容了複雜的設計思考，讓屋主結束步調緊湊的工作後，回到家就能完全放鬆心情，與家人共享愜意時光，在日常裡累積幸福能量。全案在切合起居需求的規劃下，輕巧表達屋主的美學品味，闡述出一種簡單幸福且心靈飽滿的人生主張。採訪 | 劉蕙蘋

A good design is a product from a good mind. A home tells the way a family lives and the family's story is both in the past and waiting for its future.

This is a home embracing happiness for every of its member's body and soul. It is a gathering place for one to release pressure and submerge into intimacy. The home is a loud statement for the family and its members; it proclaims a philosophical remark of family value.

1. 將所有的重要空間安排在緊鄰窗口的位罝，引用窗外樹梢作為生活背景。2. 利用區隔公私場域的滑軌門維繫臥房區的隱私，當家中舉辦宴客聚會活動時，能避免干擾幼兒作息。

1. Window views that face the community courtyard 2. Sliding door and its detail design





3



4



5



6

設計概念

屋主為年輕夫妻，自國外回臺定居，喜愛自然、開闊的生活環境。這個家格局方正，窗景面朝社區中庭，在平面配置上，將所有的重要空間安排在緊鄰窗口的位罝，讓窗外樹梢作為生活背景。男主人生活自律性高且工作繁忙，回到家後希望能完全放鬆，全心享受與家人共處的時光，平日有晨起運動習慣，設計師藉由一道滑軌門片界定公共廳區與臥房區域，讓男主人清晨運動、觀看國際新聞時，能避免干擾睡眠中的幼兒。

綜觀整個公共區域為全開放式型態，在寬闊明亮的腹地裡，僅利用家具、島檯宣示場域範疇。設計師利用客廳、餐廳與廚區串連出開放視感，大量使用活動家具，提供親子舒適的互動空間。同時，開放式廚房與寬大的中島檯設計，讓女主人烹飪時能隨時關心幼兒的活動情景，大餐桌的設計亦能滿足全家人一起用餐、共讀的需求。

全案運用大量的滑軌門片劃分場域。區隔廳區與臥房區的滑軌門，也是暗示中後段空間為居家私密領域的符號，讓宴會賓客能避免打擾幼兒作息。位於中後段的臥房區，亦減少隔牆並使用滑軌門作為隔間材，當所有臥房門片打開後，中後段面積能串連成開闊的活動場地，不僅解除了廊道封閉感，也讓中庭採光能透入長廊裡，維繫寬敞的空間感受。

此外，設計師在本案預留了寬闊動線，利用畸零面積作為收納櫃、小桌、平檯的位置，全案的櫃體與門框、開口都十分重視水平與垂直線條的齊整，不僅構築了簡潔的視覺觀感，亦免除掉動線上的碰撞干擾，讓女主人可以從容的照顧幼兒。而空間裡大量的留白，讓居住者能陸續添加收藏物件，隨興的更換擺設，呈現家庭各階段的生活故事。

設計師將結構即裝飾的思維植入本案，硬體設備均著重造型簡潔且含納生活機能，講究工法與選材構築出清新而不失細緻的質感。在素簡的空間裡，利用天花板既有樑位局部鋪陳間接光源，勾勒出淡淡的幾何線條。餐廳主牆以一道虛化的白色書櫃牆與紋絡鮮明的大甘木滑軌門片構成輕重對比，透過縱橫線條為廳區編織出視覺風景，這道木門可以自由的左右推移，變化成書櫃門片、阻隔臥房廊道，或是作為廚區的裝飾牆，為整座立面帶出多樣表情。光線在本案也成為釀造氛圍的推手，全案以重點照明佐配吊燈、壁燈，點明動線走向或視覺焦點，尤其重視書櫃與木門質感燈光刷洗，為這座風格洗鍊的都市居家，傾注自然溫暖的人文沉味。

Design Concept

The client is a young couple who just settled in Taiwan. Their passion for nature and a sensitive propensity for living quality brought them to purchase this apartment. The home shows a plan of an intensified order; its public space faces a community courtyard while the private zone recedes inward. This home is a total relaxation nest in contrast to the husband's extra busy daily work schedule. A delicately tailored sliding door system assures privacy and no disturbance to their young child when other activity happens in the living room.

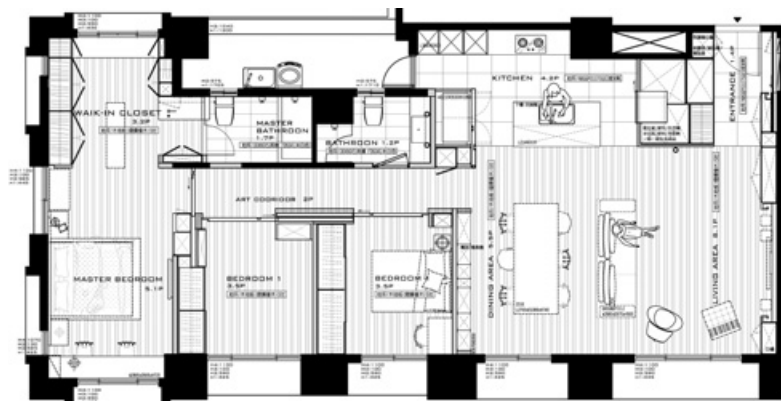
The public space is an open quarter while the layout of the furniture pieces provides a precise spatial boundary. Portable furniture pieces are also convenient for the kid's active lifestyle. An island style kitchen table allows the wife's visual contact with the child. A big dining table set in the central position gives the family a chance to eat, read and study together.

Sliding doors form an important spatial element in this apartment; they create a visual exchange venue that allows light to permeate from the front to the rear position; natural light coming in from the courtyard easily penetrates deep into the pathway and even reaches to the bedrooms.

An extra ample pathway design leaves space for daily activity and reduces the possibility of accidents happening to the child. Storage space was a particularly focused upon element; careful and functional storage was ingeniously tailored into corners and odd positions. The ambience of the apartment depends on how life leaves traces on the space without being dominated by fixed furniture and furnishing elements.

Technical details were carefully studied and tailored in this apartment; such as the lighting sources hidden inside ceiling rafters. This allows the rooms to be illuminated by a gentle, indirect light while having a linear geometrical silhouette on the profile. A main partition against the dining space looks like a book-shelf open to the its reverse side; it may be sealed by a sliding wood door. The various formations of this partition change significantly the quality of the space as the various needs for the space are met. Lighting not just fulfills the task as illumination but also reinterprets a family life in a jarring and mechanical city life. Life in the city waits for an emotional dialogue among family members and the space surrounding them.

3. 講究水平與垂直線條的齊整，免除動線上的碰撞干擾。4. 餐廳主牆以一道虛化的白色書櫃牆與紋絡鮮明的大甘木滑軌門片構成輕重對比。5. 大餐桌的設計能滿足全家人一起用餐、共讀的需求。6. 選用白色廚具面板，維繫廳區背景的清爽感。
3. Simple patterning layout assures easy orientation 4. Main partition defining the dining space and private zone - the main partition is like a bookshelf when closed by a sliding door 5. Big table in the dining room 6. White color kitchenware surface shows a weightless picture



7. 考量屋主的日常動線，利用界定玄關、廳區、廚區的方塊，用一體成型、三面功能的簡潔手法，消化各種生活需求。8. 客廳櫃牆以線性表情分割，將裝飾元素融入硬體設備中。開放式廳區讓男主人能和孩子一起遊戲、互動。9. 公共區域為全開放式型態，在寬闊明亮的腹地裡，僅利用家具、島檯宣示場域範疇。10. 平面圖。

7. Precise spatial layout offers convenience even when facing the difficulty of functional overlapping 8. Living room view - a completely open style public space links dining and living together 9. Public zone view and the view extending to an island style kitchen counter 10. Plan

建材分析

1. 使用白色與簡潔線條，讓空間在暖色光線的襯托中，流露文雅氣息。
2. 利用木質自有的紋路作為立面焦點，表達屋主喜愛簡潔與重視質感的個性。
3. 餐廳以鐵板烤漆櫃牆作為背景，鐵板能提供置物檯面的穩定性，藉由白色烤漆虛化金屬的厚重感，透過這座白色平檯襯托擺置其中的情感物件，呼應屋主重視家庭的人生觀。

Materials

1. White color is the main color tone of the space. Warm color lighting warms up the space and gives the space a sensible pleasure.
2. Wood pattern dominates the room. It is a natural pattern and texture that the clients are delighted to have.
3. White color painted cabinet and a white color preparation board gives the dining space a sense of liquidity. Daily objects set upon a white color board represent how the dining space well represents the values of a family.

溝通重點

1. 偶爾有宴客需求，客廳與廚房主牆造型透過選材質感與燈光刷洗經營出華麗感受。
2. 動線發展結合機能性安排。考量男女主人的生活動態，將必要的機能規劃，從收納、物件取用甚至需隨手放置貼身物品的位置均作安排，利用界定玄關、廳區、廚區的方塊，用一體成型、三面功能的簡潔手法，消化生活裡的瑣碎需求。
3. 不包封天花板，利用間接光源的烘托塑造向上延伸的錯覺，爭取最佳的空間高度。

Communication Notes

1. Social activity is constant in this family so the public space had to functionally well to fit the social needs.
2. To optimize the limited space, the layout offers the necessary storage space for convenience. The space fits into the other parts of the design.
3. Indirect lighting hidden behind the ceiling formation; the up-lighting design provides a visual illusion higher than the existing floor height.



11. 木門可以自由推移，作為書櫃門片。12. 主臥房，寬闊動線與活動家具的安排，讓屋主能調配出最合心意的生活空間。13. 餐廳以鐵板烤漆書櫃牆作為背景，展示家庭生活回憶的物件。14. 主臥房，利用畸零面積規劃功能小桌。15. 主臥細部。
11. Sliding door and book-shelf design 12. Master bedroom and its furniture piece layout 13. Painted metal board and displayed objects inside the dining space 14. Master bedroom and small corner table 15. Master bedroom detail design

