

Warming up a Distance

增溫的距離

| Irresistible Predilection |





雲邑設計／李中霖

1974生於台灣

1993復興商工美工科畢業

1999創立雲邑室內設計工作室

2001成立雲邑室內有限公司

李中霖 目前擔任雲邑室內設計總監，對於白的定義總有著一套獨特的見解，白與雲邑是畫上等號線的音符，跳動著；雲邑為白譜出優雅的樂章，讓生活中增添了更多對於白的遐想及生命力。

Yun-Yi Design / Chun-Lin Lee

1974 born in Taiwan

1993 graduated from Fu-Hsin Trade and Arts School

1999 established Yun-Yi Artier

2001 established Yun-Yi Design Inc.

Mr. Chun-Lin Lee is director of Yun-Yi Design; he is most interested in white color in space; "Yun-Yi" in Chinese literally means that the cloud dances by musical notes. Yun-Yi writes pieces of musical scores and gives fantasy to white.

設計者」李中霖

參與者」高禎玲

攝影者」游宏祥

空間性質」住宅

座落位置」台北縣

主要材料」特殊磚料、黑玻、實木皮、噴漆

面積」70坪

設計時間」2008年6月至7月

完工時間」2008年8月至11月

Designer」 Yun-Yi Design / C. L. Lee

Participant」 Z. L. Kao

Photographer」 H.S. Yu

Category」 Residence

Location」 Taipei Prefecture

Materials」 special tile, black glass, veneer, paint

Size」 231m²

Design period」 June - July 2008

Construction period」 August - November 2008



這個家的居住者共有四人，屋主夫婦與一對學齡期的子女，屋主期望自宅在現代風格的容顏下，具備細微照顧每位家人需求的體貼特質。因而本案的思考角度從為每一位使用者量身訂製作為出發點，企圖創造一種親密卻不令人感受窒息的共居型態。

分區不設防

本案分區規劃的目的並不是為家人關係設下距離防線，而是希望設計主軸不全然環繞於屋主夫婦的需求，採取更宏觀的二代同居概念作規劃，在設計思維上不僅更講究均等觀念，也為父母、子女各自規劃完善舒適的套房臥室，並開闢書房、休閒房、多功能廳等許多親子交流共享的場域，在尊重每位家庭成員的前提下，緊密連結居住者的生活頻脈。

基地為長矩型樣態，動線入口位於基地中段，設計師運用一座深色玻璃屏風化解視線直透入室的困擾，將公共廳區置

於全案的中心點，左右兩端各別配置父母套房與孩房區，套房式規劃讓屋主夫婦擁有舒適的私人場域，也尊重孩童擁有完整私人空間的需求。從這樣的輪廓下再細分屬性，父母房區緊鄰儲藏室、休閒房，而孩房區則規劃書房，休閒房不僅能作為獨立的琴房或客房，書房也能提供親子共讀、討論課業的場地。

設計師在公共廳區規劃一座多功能區，為居家提供一處中性模糊的空間，預留更多的使用可能。架高的多功能區平時是孩童席地遊戲的空間，讓母親烹飪時能同時看顧孩童動態，當舉辦宴客派對時，即轉變成客、餐廳之外的座區場域，滿足各個小團體分區聊天的需求。無隔牆的多功能區與廳區構成通透連結，不僅維繫廳區整體的開闊性，也藉由場域的自由感讓使用者根據當下經驗定義屬性。

1. 客廳與多功能區通透連結，維繫廳區整體的開闊感。2. 架高的多功能區，為居家提供一處中性模糊的空間，預留更多使用可能。

1. Flexible space in the public zone is completely open up to the living zone 2. Elevated flexible space can be used in varied ways



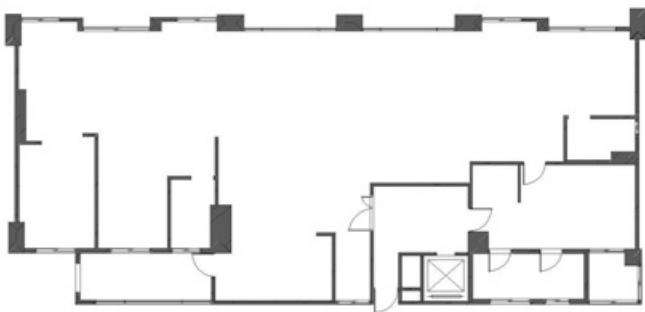
雕塑空間

全案講究簡練調性，除了使用白色作為主題，更加入深色調深刻視覺效果，並輔搭柔和的間接燈光共同調配空間溫度。設計師試圖將雕塑概念植入空間裡，在造型上更加突顯立體層次的堆疊效果，線條語彙強調不規則水平刻溝的律動，運用大量的皮革磚鋪覆於立面、地坪上，構築富含質感的背景。

特別的是，雕塑造型並非漫佈於空間中，而是在局部的天花板飾帶、立面上加以挪用變化，並透過清淺色調操作出編織交錯的視覺效果，在深淺、遠近的對比下逐漸統合秩序，避免了豐富圖紋擴散成複雜畫面，進而轉譯出摩登氣息。同時，設計師更將雕塑語彙延伸至玄關屏風與餐桌造型，主臥房內彎弧型的坐檯與天花板線條彼此對話，在設色純淨的空間呈現趣味細節。採訪 | 劉蕙蘋



3. 將雕塑語彙融入空間中，造型突顯立體層次的堆疊效果，線條語彙強調不規則水平刻溝的律動。4. 全案運用大量的皮革磚於立面、地坪上，構成富含質感的背景。5. 客廳。雕塑造型在局部的天花板飾帶、局部立面上加以挪用變化。
3. Relief pattern increases the spatial layering and depth 4. Leather bricks wrap the floor and partitions 5. Living room space and its bas-relief pattern in the ceiling details



8



9



6. 玄關屏風與餐桌造型均延續空間的雕塑語彙。7. 廊道透過清淺色調操作編織交錯的視覺效果，並修飾內含的收納機能。8. 現況圖。9. 平面圖。
6. Screen and dining table expands the details in this apartment 7. Interweaved impression on the pathway 8. Existing plan 9. Plan after conversion





11



12

10. 貫穿全案的主動線。11. 書房。12. 主臥房內彎弧型的坐檯與天花板線條彼此對話。

10. Main path in this apartment 11. Reading room 12. Table in the curved shape provides a dialogue with the ceiling relief

This is a living space for a four-member family: a couple and two young children. It was the client's wish that this new home be cozy, and everyone would feel the intimate bounds of the family while enjoying privacy as well.

Divided quarter, undivided heart

The plan is not built on a systematic need to set borders or zones but rather it offers everyone the opportunity to join together. Each family member has its own room protected by sound privacy control while the living room, reading space, entertainment room, and family room provide space for daily encounters and exchanges of life.

Because this apartment plan is long and narrow, the entrance was set intentionally in a central position to balance the proportion on the right and left spaces. A dark color glass block wall directs visual penetration into the living room which is positioned in the center of the apartment. The parents' room and children's room frames two sides of the living room. On the parent's side, storage and entertainment offer daily leisure needs; in children's space there is a reading room and a piano room, which is a space for enjoying quality time between parents and children. The piano room can be converted into a guest room for hosting friends or relatives.

There is an open space adjacent to the living room; this flexible space is elevated from the floor; and it offers a platform for playing and a buffet like sitting place when a party is held in the living room. There is no direct partition to sector this space from others. Its actual function is left to be filled according to the events in the space.

Sculpturing space

White color is the main color of this apartment, while the white is against a dark color in the background to reveal a relief to the depth of the space. Carefully designed artificial lighting increases the spatial layering as well as bringing the space a feeling of intimacy. The tactics to increase spatial layering expands further to texture surfacing and detailed design. Leather bricks in a rich pattern on the floor enforce the visual projection of depth and infinity.

It is interesting to view the decorative pattern as arranged on the curve band against the ceiling. The bas-relief molding and background set in a contrasting color builds up layering in depth as the intertwining pattern is feathered in both a unique layout and as a visionary illusion.

Custom furnishing elements such as a screen and dining table are designed to have a dialogue with the interior color and intriguing details. Translated by Ray S.C.Chu & David Mark Riz