

Home in Poetic Rhythm

# 沐光詩宅

| Graceful Residences |





雲邑設計／李中霖

1974生於台灣  
1993復興商工美工科畢業  
1999創立雲邑室內設計工作室  
2001成立雲邑室內有限公司

李中霖 目前擔任雲邑室內設計總監，對於白的定義總有著一套獨特的見解，白與雲邑是畫上等號線的音符，跳動著；雲邑為白譜出優雅的樂章，讓生活中增添了更多對於白的遐想及生命力。

Yundiyh Design / C.L. Lee

1974 Born in Taiwan  
1993 Diplomas, Fu-Shih Trade and Art School  
1999 Founded of Yundiyh Design  
2001 Founded Yundiyh Interior Design

Mr. C.L. Lee is currently director of Yundiyh Interior Design Inc. He is obsessed with white color; he sees white color and the studio's work has a non separated link; Yundiyh expands the traditional conception of the color and gives it a vivid and "colorful" reading for both space and life.

設計者」雲邑設計／李中霖 江曉慈

參與者」高禎玲

攝影者」李國民

空間性質」住宅

坐落位置」台北市

主要材料」白色烤漆、大理石、玻璃馬賽克、鋼琴烤漆

面積」120坪

設計時間」2008年8月至11月

施工時間」2008年12月至2009年7月

Designer」Yundiyh Design / C.L. Lee / H.T. Chiang

Participant」Z. L. Kao

Photographer」K. M. Lee

Category」residence

Location」Taipei

Materials」white paint, marble, glass mosaic, piano paint

Size」397m<sup>2</sup>

Design period」August - November 2008

Construction period」December 2008 - July 2009

這是雲邑設計闢別白色住宅之後再次詮釋純淨空間的新作品。純白空間被普遍認為是當今時尚居宅的代名詞，在許多設計團隊相繼用純白來詮釋作品的潮流裡，自2001年起就以純白空間為特色的雲邑設計，在過去一段時間卻特意跳脫了既有軌道，反而逐漸將深色元素滲透至作品中，企圖探索更深刻的人文厚度與空間感動，在一連串的累積與實踐後，本次再度投入了純淨空間的塑造，作品裡多了份從容的圓熟和溫度。

### 線性詩意

本案是雙拼住宅，寬闊的腹地全屬屋主夫婦兩人使用，屋主相當講究生活品質，對於空間需求單純，特別提出瑜珈房與SPA區的要求。

考量家庭人口單純，在新的規劃藍圖裡，公共空間如同一座開闊的交誼廳，特意將隔間減至最低，破除傳統的場域疆界，讓使用者能自由的共享空間。以客廳為中心點，將基地左側腹地架高平台，作為休閒廳與瑜珈房用地，右側則編設書房與主臥套房。

設計師賦予客廳、休閒廳、瑜珈房可機動調配的功能，讓使用者依據活動需求塑造場域範疇，拿捏隱私與開放的微妙尺度。比鄰的客廳和休閒廳提供宴客時流動聚坐的地點。瑜珈房與廳區之間僅設置摺門作彈性區隔，除了滿足平日的瑜珈活動，還能在宴客時轉作為獨立安全的孩童遊戲場地。

這座長形基地著重層次分明，運用大量的線性筆觸勾勒景深層次，藉由天花板的帶狀造型、燈槽編構出層層框景的效果。利用橫走的線條在視覺上增寬腹地，線框排組的縱向延續也為廳區建構出豐富景深。設計師希望在層疊的線性輪廓裡催生詩意氛圍，雅淨空間中運用低斂的造型、貼近地坪的家具、大量間接照明，突顯出立體線溝的秩序美，釀造理性而詩意的氛圍。



1. 利用天花板立體線溝的層次納入結構樑，特意將隔間減至最低，讓使用者能自由穿梭於空間裡。2. 客廳主牆鑲嵌L形玻璃，讓視線透視至比鄰的書房，將書房的彩色地坪借景至客廳。

1. Public space enjoys an optimized layout and can be used in various occasions 2. L shaped glass panel in the living room gives a visual hinge to adjacent space



3

### 純色豐饒

設計師企圖在本案探索白色的豐富性，他從實用面與感觸面著手。

在實用面上，選擇雪白銀狐大理石、白色烤漆等質材，讓地坪、桌面、門片在長期使用下依然能整潔易清理。感觸面上，利用白色元素本身的特性、受光反應，細緻的回饋純色裡所蘊藏的輕重質感，同時空間裡也局部結合了暖黃光源、原曠材料，調配出白色表層下的深濃輕淺。

本案在白色主調的原則裡投入了百分之十五比例的黑色調，為純淨空間對位出豐饒和絃。黑色烤漆玻璃或金屬等比回應著白色元素細緻或原曠的反差運用，在全室豐沛採光的洗沐中，創造出柔靜和諧的情境。採訪「劉蕙蘋

In the recent couple of years, Yundyih has experimented using dark colors in residential designs and the firm since 2001 has designed many residential spaces in dominating whites winning a great reputation for its director C.L. Lee.

This unique apartment design is mostly white and Mr. Lee has again used white color in a very personal and artistic way.

### Poetics in lines

This apartment is a double joined unit used only by a couple; the program is not different from most apartment space except a Yoga room and Spa bathroom were required.

Because there are only two family members, Lee's layout is basically a very flexible public space like a lounge. There are very few partitions for expanding both the visual and physical borders to the extreme. The living room occupies the pivotal and physical central position; on its left the Yoga room and entertainment space are placed, on the right one finds the reading room and master bedroom.

Every room except the most private bedroom can be used according to need. When guests are invited, they can enjoy a rather formal sitting area in the living zone, or in a different zone like the Yoga space. The lift up floor on the Yoga room is divided by only folding door to allow kids to stay over or play while their parents are enjoying gathering among friends.

3. 客廳選擇造型簡練的家具與中西合璧組合手法，突顯純淨美感。4. 廳區藉由天花板的帶狀造型或燈槽，編構層層框景的效果。

3. Furniture pieces have no excessive details while Chinese pieces join with the West to sent a message of cultural mingling4. Lamp grooves on the ceiling weave a rich pattern to invite a perspectival view



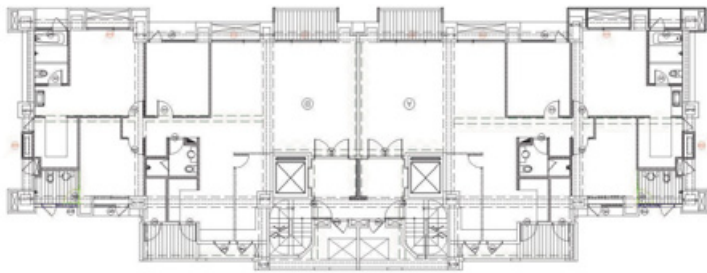




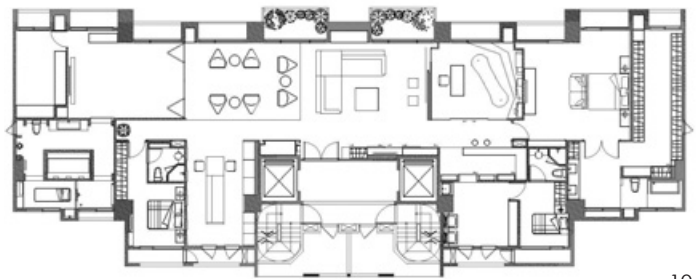
5. 瑜珈房與廳區之間僅用摺門彈性區隔。6. 餐廚區牆面鋪磚，取其粗獷質地與廳區的純淨調性構築反差。7. 休閒廳提供宴客時流動聚坐的地點，能彈性連結瑜珈房。8. 利用多功能中島空間取代傳統的餐廚規劃。9. 現況圖。10. 平面圖。

5. Yoga room links to the living room via a folding door 6. Rustic surface tiles in the kitchen space make a strong textural contrast against the living room floor 7. Entertainment zone and Yoga room 8. Island style kitchen layout 9. Existing plan 10. Plan after conversion





9



10



6



7

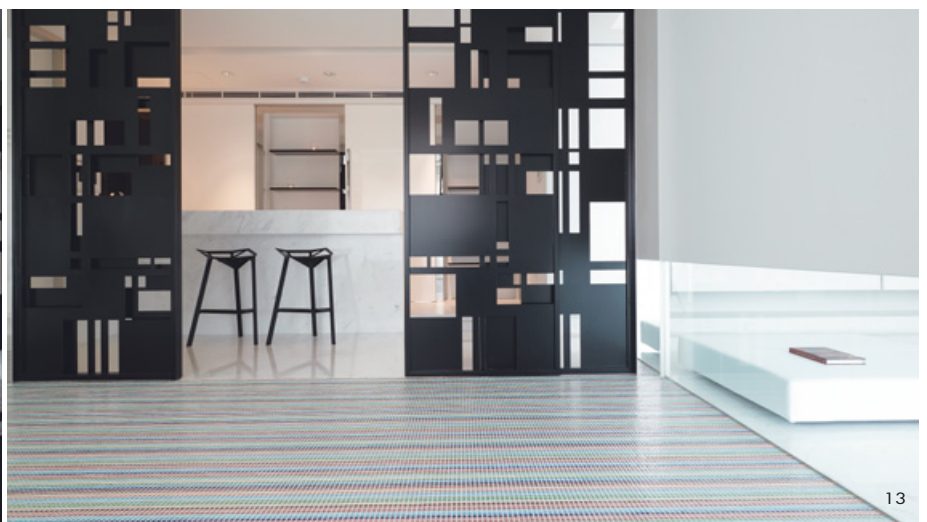


8



11. 書房門片用鐵工作不規則矩型排列，成為廊道的另一幕風景。鏤空門片半遮掩的效果，創造了視覺趣味。12. 書房積木般的展示架，本身即是一座大型的雕塑裝飾。13. 自書房望向吧台區。線性語彙延續至書房地坪。14. 主臥房，素雅的空間選用雕刻木皮貼飾主牆，強調素材質感。15. SPA室浴池以Bisazza馬賽克主牆為背景，呈現立體如畫作般的效果。16. SPA室。

11. Metal door layout in a geometrical pattern design gives an inspiring vista at the pathway' s end 12. Reading room and its sculpture like shelves 13. A view from the reading space towards the bar space 14. Master bedroom and its light relief veneer color wall 15. Spa bathroom and Bisazza mosaic wall revealing a 3D illusion 16. Spa room





Spatial depth is created by furnishing elements and other fixtures like lighting. On the ceiling there are lamp utility grooves in a geometric pattern to emphasizing a strong perspective view. It was the designer's hope that the any excess element should be left out and simplicity defines the true beauty.

### **White color in abundance**

White color, an iconic emblem of the designer, dominates this apartment as well; Lee's effort starts from selecting the proper materials to satisfying both practical and aesthetic needs.

He used snow white marble and painted white metal for easy maintenance as white color members create rich layering when absorbing or reflecting light. Lighting sources, directions, and colors are carefully controlled in Lee's scheme, as well as surface texture from the smooth to the most rustic.

There are some black spots in this apartment; black glass or metal boards create a harmonious dialogue in the space; natural light enlivens the cold material and gives the space a sensitive touch for living. Translated by Ray S.C.Chu & David Mark Riz

