

# Essence Returning

## 歸真

設計者 | 石坊空間設計研究 / 郭宗翰  
參與者 | 石坊設計團隊  
攝影者 | 游宏祥  
空間性質 | 住宅  
坐落位置 | 臺灣臺北市  
主要材料 | 石材、玻璃、鐵件、實木木皮、木作噴漆、實木地板  
面積 | 45 坪  
設計時間 | 2014 年 3 月至 6 月  
施工時間 | 2014 年 6 月至 11 月

Designer | Materiality Design / Stephen Kuo  
Participants | team members of Materiality  
Photographer | Kyle Yu  
Category | Residence  
Location | Taipei, Taiwan  
Materials | stone, glass, metal member, veneer, paint, solid wood  
Size | 149m<sup>2</sup>  
Design period | March- June 2014  
Construction period | June – November 2014



### Stephen Kuo



Stephen Kuo  
2002-present time Materiality Design / Director  
2005-2011  
Shih-Chien University, College of Design / Lecturer  
2000-2002  
M. Moser Associates, Hong Kong / Designer  
1999-2000  
MA in Architecture & Interior Design / University of North London  
1995-1999  
BA in Interior & Spatial Design / University of the Arts London  
Diploma in Foundation of Art & Design / London Guildhall University

石坊空間設計研究 / 郭宗翰  
2002- 迄今 石坊空間設計研究 設計總監  
2005-2011 實踐大學 設計學院講師  
2000-2002 香港商穆氏設計 設計師  
1999-2000 英國北倫敦大學建築設計系 碩士  
1995-1999 英國倫敦藝術大學空間設計系 學士  
英國倫敦市政府大學藝術設計 國家檢定

遷徙是淘洗生活的機會，在一次次割捨裡離析出人生最珍視的核心，奠基一個家的精神文化。十多年前，設計師郭宗翰與屋主相遇，雙方合作書寫下友誼篇章，長久緣分涵蓋了彼此成家、育兒等不同階段，此案是他們第三次合作，多年來郭宗翰見證這個小家庭的繁茂發展，自身在事業或生活上亦邁入另一階段，因此訪談空間故事的同時，也宛若打開記憶之盒，回首他們的生命轉折，那些曾經熟悉，又或新穎的要素。

#### 生活導向

回顧這個家的歷程，第一座住宅設計完成於屋主新婚時期，空間僅服務夫妻倆人的想望，講究原木及雅痞質感；多年後進行第二座住宅規劃，屋主因工作愈加繁忙，希望在私人生活轉換心境，即使當時已經育有兩個男孩，依然不減對都會冷調的嚮往；現今，屋主的三名子女邁入學齡期，活潑好動，設計考量轉向關照全家人實質需求，輔助女主人料理家務，因而具有兩大特色：其一，以餐廚場域作為主導空間，進而發展全案配置；另外，設計手法更加輕柔活潑，加入繽紛用色。

郭宗翰認為，居住動態是空間朝氣的泉源，他向來偏愛藉機能歸整施放場域自由，引導居住者跨越邊界，參與彼此活動，此案以餐廚空間為主景，靈感源自他對於居住者的生活觀察。平日，女主人多半在餐廳、廚區活動，必須同時關照孩童動態，午間男主人固定返家與妻兒共餐，餐廚空間是使用最頻密、熱鬧的區塊。郭宗翰設想，何不讓它佔據最重要的位置，讓開放、明亮的環境予人愉悅感？因此，全案規劃上雖然承襲一貫的通透格局思路，但是場域的順序、比重卻進行置換，將採光最舒適的腹地讓予餐廳及廚區，編入寬闊長桌提供親子共餐、共讀之用，客廳則劃設在裡側區塊，作為男主人放鬆休憩場地，開放便捷的動線能協助女主人操持家務，低矮的活動家具亦可因應活動需求而挪移。

#### 繽紛入色

簡潔與精確向來是郭宗翰作品的象徵標記，此案他依然以擅長的流利線條消化複雜機能，在材料選擇、施工品質上細膩琢磨。或許是人生邁入另個階段，在構劃時也將個人體悟糅合其中，折射了自己與居住者共同懷抱的願景。

在這個家，郭宗翰擺脫過往講求元素同質劃一的潔癖，在餐廳掛飾主題、造型不一的畫作，色調鮮亮的餐椅羅列長桌兩側，難以歸類的元素紛呈並存。

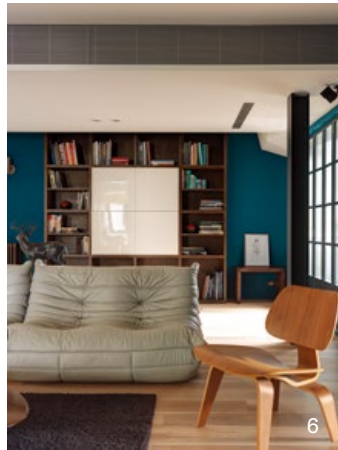
1. 刻意強調木料色差，藉著光照鮮明木紋肌理，整體顯得自然溫潤。
1. Wood texture is rich under natural light



郭宗翰坦言，這其實是直覺性的融合，他想創作一幅令人佇留的景致，屋主夫婦與孩子們在餐廳親密互動，桌上擺放美味食物，背景擁有各式各樣的創作塗鴉，空氣中瀰漫悠閒與歡笑，那畫面輕柔活潑且安逸動人，在設計階段就不斷萌生於腦海，從模糊到細膩，自平淡到豐潤，使他決意落實。然而整體實務操作上，並非跳躍無序，依憑早年在英倫求學所陶養的美學底蘊，郭宗翰利用厚實的水泥色背景延續場域關係，藉光線變化鮮明物質肌理，從結構、造型的線性脈絡賦予空間秩序感，讓鮮亮色彩得以融入穩定構圖，整體繽紛而和諧。

郭宗翰談到，全案規劃最複雜之處在於思量居住者的生活節奏，促進場域自然對話，進而引起彼此的好奇、關心，他期望以節制低斂的筆法抒放空間，給予居住者最大的自主尊重，回應設計源自「使生活更美好」的初心；或許，我們也能視為這是設計師從回歸純真蓄養豐盛的真情體認。採訪 劉惠蘋

2. 厚實的水泥色背景延續場域關係，利用結構、造型的線性脈絡賦予整體秩序感。3. 從遼闊視域裡引導居住者跨越場域界線，參與彼此活動。4. 流利的線條消化了複雜機能，將房門隱身於電視主牆之中。5. 在通透場景中，利用梁柱走向帶出場域關係。  
2. Cement paste surface wall sets a backdrop to emphasize spatial objects 3. Flexible space encourages members to constantly be in touch 4. A hidden door that submerges the TV cabinet 5. Ample space and spatial direction guided by structural elements



Moving is a strange experience because each move means that something has to be put aside and one has to learn a new way of life. This project for a small family came from an exceptional experience back decades ago. This is the third house designed by Stephen for the family because the family has encountered changes in terms of needs over time.

#### Living direction

The first home for the family only served for the newly married couple. They enjoyed an intimacy surrounded by solid wood and quite small. The second is constructed for the spatial demand because two kids were born. And now the third one

has to serve three big kids and the couple. Two design strategies were adopted: first, the kitchen and dining space had to play a central role in the home; and second, the design uses colorful materials to add up a vivid spirit enjoyed by the kids.

Stephen believes that a good living space must be energetic and flexible enough to cope with different demands. A continuous cooking and dining space is based on his observation of the wife's daily activity, which is mostly in this space, and even when her husband returned home, he spent most of his time enjoying meals with his family members.

Even though the main living space joined with kitchen and dining space is not uncommon in many projects, this home places the most ample and natural light in the kitchen and dining space. A huge long table set in a central position in this zone is where members can enjoy reading, and having meals together. The living room is rather small and it offers the husband's relaxation for reading and having conversation with his wife and kids.

#### Color in space

Stephen is particular in his delicate attitude to design quality and detailing and this is his famous trademark. This small home enjoys the best construction quality and selection of fine furnishing pieces. He believes fine work shows true respect for his clients.

In the dining room, one finds the typical Stephen's polished style was slightly modified; he hung several paintings in the space and selected bright color dining chairs. He confessed this created a scene to him where family members can gather around the table where kids are drawing and tasty cookies are placed on the table. Stephen believes that the challenge of home design is to enhance the way of a client's daily living experience yet also providing and opportunity for family member to accept a new way of life when encounters changes in their daily habits.

6. 客廳與遊戲區之間僅用沙發區隔，方便屋主關照孩童動態。7. 以餐廚空間為主導，開放、明亮的環境條件予人愉悅感，引起佇留欲望。8. 寬闊舒適的餐廚空間，也是女主人舉辦讀書會的活動用地。9. 玄關，立面使用細切大理石施作亂紋拼接，天花板刻意脫開，讓間接光源溫柔灑落。  
6. A sofa set divides the living room and play room 7. Kitchen and dining room play a central role 8. Ample kitchen and dining room offers the best convenience for the wife 9. Details of fragments of the marble lobby wall and ceiling formation





### 建材分析 Material Analysis

1. 玄關牆面以細切大理石作亂紋拼接。2. 實木地板突顯木紋與色差，加深自然效果。3. 使用色彩噴漆賦予室內鮮明彩度。4. H型鋼強化空間結構，豐富場域層次。

1. Broken marble pieces join to form a beautiful pattern on the lobby wall  
2. Solid wood floor provides true texture and intimate color  
3. Color was added to this home  
4. H-shaped metal members were used to provide supporting structure

### 溝通重點 Communication Note

1. 屋主工作繁忙，十分重視家庭情感經營。以全家人使用最頻密的餐廚空間作為主景，安排在採光最佳區塊，進而發展全案配置。2. 令結構外露，盡可能將天花板拉高，配以通透格局，使整體開闊、明亮。3. 引入童話感配色，令空間氛圍輕柔活潑。

1. This home is centered on the dining room/kitchen to satisfying the demands of the wife who is constantly there, and the demands of husband, who believes family gathering moments are key quality for the family.  
2. Extra high ceiling provides a more ample spatial experience for the family members  
3 Fairy tale colors were added to the dining room and kitchen

10. 客廳劃設在裡側區塊，作為男主人放鬆休憩之地，內斂的藏藍色背景隨著光照明暗遞變層次。11. 多功能區，是遊戲、閱讀的角落，門片對外鄰接工作陽台。12. 主臥房，明亮的萊姆黃帶來滿室生氣。13. 主臥房，利用衣櫃劃分廊道與更衣區，加密內部隱私。14. 平面圖。

10. Living room is placed in recessed position that offers the husband relaxation  
11. Multi-function area offers space for reading and playing  
12. Master bedroom view  
13. Master bedroom and its closet layout  
14. Plan

