

Myst

設計者」齊物設計 甘泰來
參與者」張芃欣 賴彥銘 張亞璇 范秉鈞 何智淵 陳海倫
攝影者」盧震宇
空間性質」餐飲娛樂空間
座落位置」臺北市信義區
面積」室內525坪 / 室外168坪
主要材料」木紋耐火板、鍍鈦鏡面不鏽鋼、風化木、墨鏡、義大利灰網石、LED PANEL、紅色漆面皮革、卡拉拉白天然石材、仿金屬噴漆
設計時間」2010年7月至2011年7月
竣工時間」2011年11月

Designer」archinexus / Tai Lai Kan
Participants」Lily Chang / Manson Lai / Sherry Chang / Michael Van / Patrick Ho / Helen Chen
Photographer」Bass Lu
Category」restaurant
Location」Sin-Yi District, Taipei
Size」Interior: 1736 m², Exterior: 555 m²
Materials」wood texture fire-resistant board, Titanium plate on stainless steel panel, weathering wood, black mirror, Italian gray color grid pattern granite, LED Panel, Lacquer leather skin, Carrera white marble, metal painted surface treatment
Design period」July 2010 - July 2011
Completion」November 2011

甘泰來

齊物設計事業有限公司 總監
交通大學建築研究所 兼任講師
實踐大學建築研究所 兼任講師
哥倫比亞大學建築碩士 (獲榮譽獎項畢業)
康乃爾大學建築與都市設計研究所研究
東海大學建築學士

archinexus / Tai Lai Kan

General director, archinexus co., ltd.
Lecturer, Graduate Institute of Architecture,
National Chiao Tung University
M.A., Columbia University (with honors)
Graduate study, Cornell University?
B.A., Tunghai University



Myst位處於繁華的臺北市信義商圈，因應都會生活的多元娛樂需求與經營策略，從日到夜都有不同的使用需求，設計師除了提升空間使用的彈性，更強調餐飲娛樂業與都會環境之關聯，藉由引景與映景的手法為內部複合入多層次風景，在強調環境特質的佈局思考中，打破了裡外界線，為賓客提供可動可靜的交誼選擇，書寫下臺北娛樂空間的現代新貌。

設計概念

本案坐落於ATT 4 FUN的高樓層，腹地包括九樓與八樓的L型露臺，比鄰臺北101大樓。設計上，將主入口定位在九樓，考量經營型態的多元性以及空間效益，將全案劃分為Lounge、Nightclub、VIP Room與戶外露臺等四大區域，各區之間藉由隧道串連，並配有吧檯與獨立的服務動線，讓業主能夠彈性切分場域尺度，主導不同時段的營業範圍。

設計師企圖在本案表達城市繁華與娛樂餐飲業相互依存的關係，一方面將環境景色引作空間背景，另一方面則是為賓客構築了多層次的感官體驗。在這裡，空間層次可被橫向或縱向的解讀，除了藉由落地玻璃窗引入環境的霓虹夜色，甚至特意運用玻璃天窗，讓視線能看至鄰層的透明泳池或是空中花園，打破了裡外界域的框架。有別於各區積極迎向城市繁華景致的姿態，連繫場域的隧道則扮演著讓人短暫抽離喧鬧氛圍的出口，隧道裡利用單純的木質元素壓縮視景，與各區正在上演的熱絡氛圍產生了強烈反差，在一縮一放的空間感受裡，突顯出店中店的特色。

儘管九樓的Lounge、Nightclub、VIP Room擁有各自的設計主題，設計師仍然運用了框景與映景的手法貫穿全案，為各區串連出默契語彙。全案可見大量的框件或是反射材料裝置於立面、天花板，這些框格不但對賓客引導了閱讀環境的角度，也解構或重構著內部風景。每當入夜後，在華麗光色的渲染中，可見框景彼此映像或穿透，相乘出萬花筒般的拼貼效果，與窗外的霓虹夜色相互輝映。

設計師特別談到，規劃娛樂夜空間時更需要植入催化氛圍的種子，尤其音樂節奏、光影動態、人群交誼這三者有著微妙的連動關係。以本案來說，店中店的佈局讓各區在音樂選曲上產生殊異，因而設計時特別將音頻納入考量，利用隧道的包覆感，讓賓客在過場時能逐漸感受鄰區樂音從模糊至強烈的轉變，開始對下一站風景產生期待。而在各區裡，由於音樂節奏牽動了燈光變化，因此利用石材、墨鏡或不鏽鋼的感光效果擴張環境動態，在忽明忽暗的繽紛燈色下，大量的反射材質宛如蒙太奇般的剪接著賓客身影，既寫實又綺麗，讓人產生一種嬉遊於光影花園的感受。

八樓的露台區擁有面對臺北101的極佳景觀。設計師特意強調本案與顯耀地標為鄰的優勢，讓這座L型的帶狀露臺一切都化繁為簡，無論是沙發座椅、帳篷、高腳吧椅或是吧檯均選擇純淨色系，靜靜的襯托著飲食男女與都會夜景，讓人得以暫且脫離喧鬧的聲色環境，在此欣賞燦爛燈火。採訪」劉蕙蘋

1. 入口，利用隧道的包覆感，讓賓客對內部風景產生期待。
1. Entrance and tunnel link



Myst is located right in the middle of the premier commercial hub of the city. It targets customers of all kinds and runs its business from daytime to late night. Its spatial program aim was to integrate several entertainment functions together while enriching spatial interest with dynamic views and lighting treatment.

Design Concept

Located on the eighth and ninth floors of "ATT 4 Fun" and includes a balcony facing Taipei 101, Myst enjoys a tremendous view and site advantage. The program includes a lounge, nightclub, VIP room and an outdoor relaxing balcony. Each can function independently and link through a tunnel to connect all together. This flexibility responds to reasonable management depending on the capacity of need at a specific time.

Design team archinexus placed the context of the city as an element of design; the cityscape is introduced as a backdrop against the interior which in turn is like a stage displaying fully a customer's sensuous touch. Glass windows bring transparency to the border even expanding the views to neighbor's roof gardens and swimming pool. When entering the tunnel from one quarter to the other, one immediately encounters a contrasting view. The darkness and view restrictions cut off any sensuous stimulation from outside.

The ninth floor plan is intentionally divided into several independent zones which each have unique features. Materials used in each zone offer a different quality to the spatial interest; such as the reflective materials that offer endless views on the surface as a kaleidoscopic fantasy. Collage-like features mix the interior furnishings with the exterior giving customers a dream-like wonderment as if landing on an alien world.

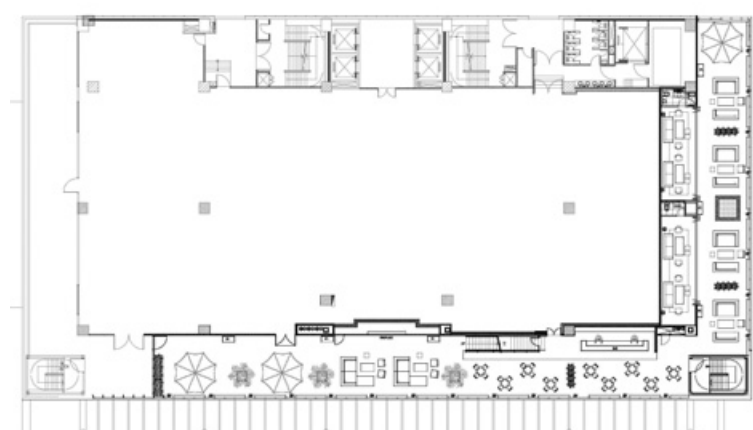
Acoustic features were also implemented into the design. The sound is not measured by volume and magnitude but rather it reflects spatial scenarios and augments the visual impression of the site. Granite, mirror and stainless steel also act as sound reflective panels that magnify the sound and provide an echoing effect on the space. A synchronic mechanism triggers light and sound to react simultaneously and direct a surreal fantasy and extraordinary view.

The balcony facing Taipei 101 Financial Center was implemented for an intimate comfort in contrast to what is seen in the interior. Sofa seating, balcony tent and bar table all welcome people to be detached from over-stimulated nerves while quietly enjoying the beauty of the Taipei skylight.

2. Lounge，運用玻璃天窗讓視線可透及鄰層的透明泳池。
2. Lounge and transparent view towards the neighboring building and its swimming pool



6



7

3. Lounge, 空間裝置仿鹿角枝型吊燈以及暖色的石材、木料, 呈現出溫暖且略粗獷的氛圍。4. Lounge, 不鏽鋼的感光效果擴張了環境動態, 產生虛實相映的趣味。5. Lounge, 以大地色系鋪陳, 在局部配以反射質材, 營造溫暖華麗的氛圍。6. 九樓平面圖。7. 八樓平面圖。
3. Lounge: antler style hanging lamp and surrounding furnishings 4. Lounge: reflective materials expand the space and create a surreal view of the interior 5. Lounge: earthy color system and reflective materials 6. The ninth floor plan 7. The eighth floor plan



8

8. Nightclub, 利用石材的吃色效果渲染光色, 讓吧檯變為一種裝置元素。9. Nightclub, 以多層次的地景規劃去除視線死角, 讓四面都具有成為舞台的發展可能性。10. Nightclub, 反射材質在繽紛光色的渲染中, 產生了萬花筒般的綺麗風景。 11. 藉由落地玻璃窗引入環境的霓虹夜色。12. VIP Room, 選用不成套的特色沙發擺置, 天花板與立面均延續全案的框景特色。

8. Nightclub: granite bar table is like an art installation 9. Nightclub: layering landscape and a formal stage view 10. Nightclub: reflection builds a kaleidoscopic fantasy 11. Grand window expands the view towards the neon lightings from the surroundings 12. VIP Room: different sofa set offers a non-formal setting to the room

建材分析 Material Analysis

利用石材、墨鏡或不鏽鋼的感光效果擴張環境動態, 反射材質能即時捕捉賓客與光影, 加深繽紛且熱鬧的感受。
使用大量的框件解構或重構視景, 為立面或天花板經營出立體層次, 引導賓客閱讀空間的視角。
Shining granite, mirror and stainless panels reflect the surroundings in endless layering and catch every movement of customers.
Framed panels create a multi-layered ceiling panel to direct spatial interest.

溝通重點 Communication Notes

- 需滿足日間場租活動、到夜間的Lounge、Nightclub營運, 將主入口定位在九樓, 全案劃分為Lounge、Nightclub、VIP Room、戶外露臺等四大區域, 各區之間藉由隧道串連, 各自配有吧檯與獨立的服務動線, 讓業主能依隨使用需求縮放營業範圍, 獲得最佳空間效益。
 - Nightclub安排階梯式座區, 規劃多層次的地景、投影瀑布水幕, 讓四面都具有成為舞台的可能性, 達到面面皆有景、面面皆可觀的效果。
 - 八樓露臺規劃為獨立賞景區, 提供悠閒且能俯瞰城市燈火的交誼場地。
- Four sectors: lounge, nightclub, VIP Room and roof balcony, are laid out to offer flexible management depending on actual need. Each space must have direct access from one to the other.
 - Night club has a stepped sitting zone to offer layered view to the customers and it forms a formal stage when needed.
 - The balcony is a view casting platform allowing customers to enjoy the beauty of the city view



9



10



11



12



13. 戶外露臺，享有面對臺北101毫無阻礙的全露天景觀。14. 戶外露臺，帳篷與座椅均採用純淨色系，藉以襯托賓客與都會夜景。15. 戶外露臺，水池與獨立包廂，環繞露臺區的木長檯也可作為短暫休憩的邊靠。16. 戶外露臺，規劃獨立吧檯滿足宴飲需求。
13. Balcony: a tremendous view facing a rising Taipei 101 14. Balcony: seating design and the beauty of its extended cityscape 15. Balcony: reflective pool and an independent box space for customers 16. Balcony: independent bar space offering soft drinks to customers

