

OD

設計者」齊物設計／甘泰來 高泉瑜
參與設計」劉煜鈴 武金鳳 陳海倫
攝影者」盧震宇
空間性質」BAR & LOUNGE
坐落位置」臺北
主要材料」杉木板、水泥、仿古磚
面積」232坪
設計時間」2012年10月至11月
完工時間」2013年5月

Designer」archinexus/ Tai-Lai Kan , C. Y. Kao
Participants」Y. L. Liu, Z. F. Wu, H. L. Chen
Photographer」Z. H. Lu
Category」bar and lounge
Location」Taipei
Materials」China fir wood, cement, faked old brick
Size」767 m²
Design period」October - November 2013
Construction period」May 2013



甘泰來

齊物設計事業有限公司 / 總監

交通大學建築研究所 / 兼任助理教授

哥倫比亞大學建築碩士 (榮譽獲獎畢業)

康乃爾大學建築與都市設計研究所研究

東海大學建築學士

獎項

2010 - 第八屆現代裝飾國際傳媒獎 年度商業空間大獎

2009 - 臺灣室內設計大獎 商業空間類TID獎

2009 - 蒙門雜誌 最佳會所獎

GENERAL DIRECTOR / TAI-LAI KAN

General Director of archinexus · Adjunct Assistant Professor, Graduate Institute of Architecture, National Chiao Tung University · Graduate School of Architecture, Planning and Preservation, Columbia University / New York, NY · Master of Science in Advanced Architectural Design (with honors) · Graduate School of Architecture, Cornell University / Ithaca, NY · Graduate Study of Architectural and Urban Design · Department of Architecture, Tunghai University / Taichung, Taiwan · Bachelor of Architecture

AWARDS 2010 - The 8th Modern Decoration International Media Prize, Annual Commercial Space Award · 2009 - The TID Award of Commercial Space · 2009 - The Most Outstanding Club House for Aria in Elite Homes Real Estate Magazine Award



本案為一座複合式餐飲空間，佔地兩個樓面。考量娛樂夜空間十分注重氛圍凝聚，特意將入口安排於一側，並順勢劃分出L型的長長廊道，歸整場外的排隊秩序，讓賓客能順著動線方向緩緩前行，營塑期待入場的情緒，並避免新加入的人潮擾亂場內氛圍。在整體規劃上，為了提供賓客更周到的服務，設置多座吧檯以滿足不同樓層、區域的需求。一樓設有兩座吧檯，其一位於入口處，兼具接待區，是綜合功能的前導空間，讓甫入場的賓客有一處暖身

之地，在此啜飲香檳、飲品，輕鬆的觀望室內動態，或是彼此展開交誼對話；另一座設於鄰近挑空區的主場空間，以兩座L形中島檯框圍出寬闊的服務動線，能滿足四方人群各種調飲需求。二樓吧檯主要服務沙發區的賓客，為在該樓層洽談交誼的人們提供更精緻細微的服務。

設計師希望突破平面樓層的界限，以垂直連貫以及多層次地坪重塑空間層次，並且將地景概念運用至空間裡。VIP室旁利用階梯與平台的結合，建立豐富的中間層，這些階梯可以通往VIP室，亦連結了上下樓層的動線，讓賓客遊走其中時可以感受不同高度的視角。此外，特意將階梯加寬，予人隨地而坐的輕鬆感，提供表演者或觀賞者參與活動的臨時位置。VIP室以摺門作為屏牆，內部規劃下沉式座區，座區的長桌延伸成一座伸展台，這座軸線貫穿內外，當表演進行時階梯與伸展台都可以作為舞台，因位處於中間層，所以兩座樓層的賓客都能夠清楚觀看節目。此外，挑空區立面的多道旋轉屏風也豐富了後台動線，讓服務人員能夠避開擁擠人潮，從容的抵達工作區塊，或是提供表演者更靈活且出奇不意的現身方式，創造多變的舞台效果。

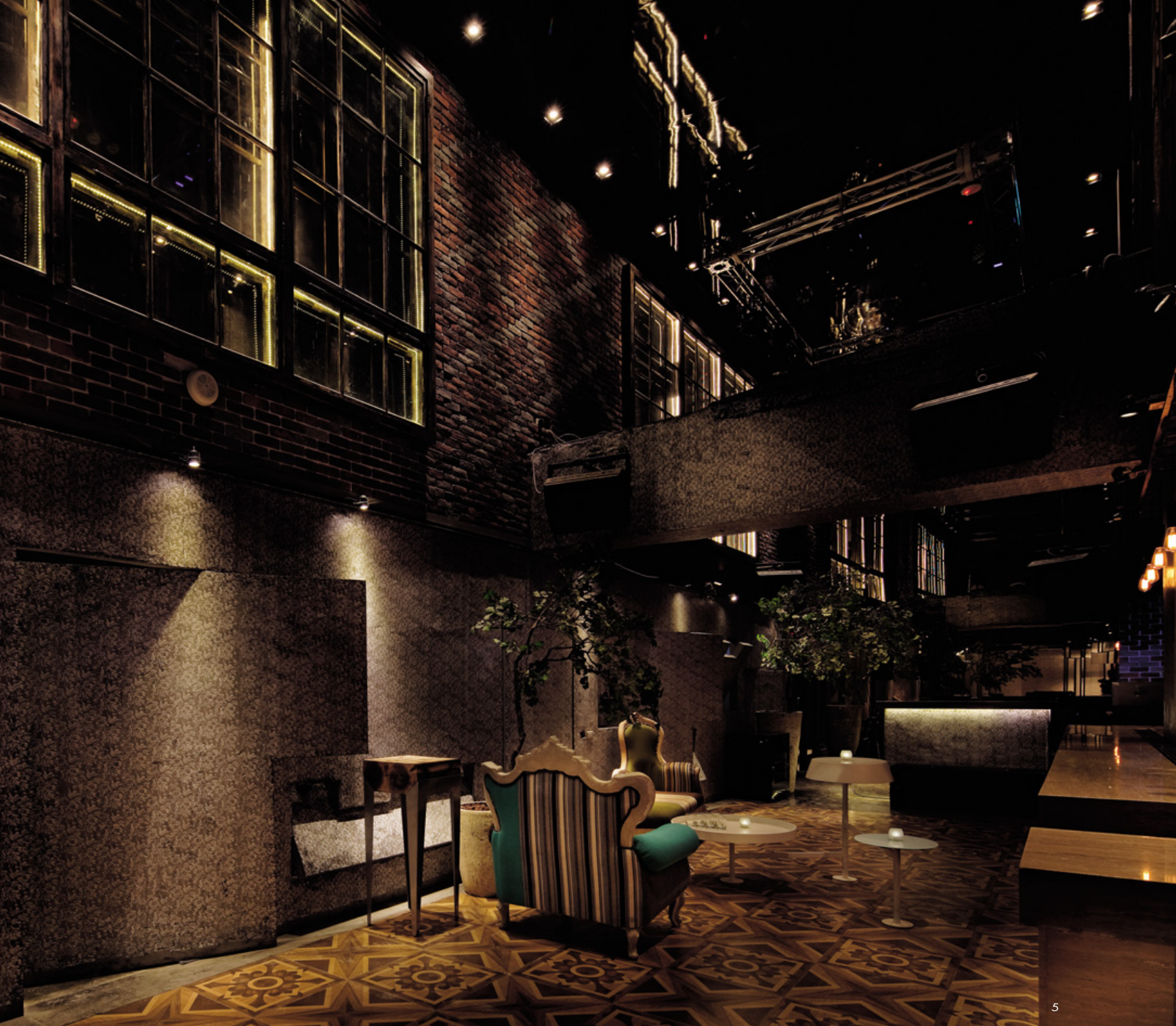
本案擁有兩座樓層，具有可利用樓面界定場域的優點，但是樓面分割也可能阻礙人群交流，造成活動氣氛不易擴染的情形，因此設計師更加重視場域之間的溝通，本案透過垂直與平面的延展達到溝通目的。從垂直面來看，挑空區連貫了一、二樓，讓兩座樓層的賓客可以觀望彼此動態，當一樓進行表演節目時，二樓賓客也能從圍欄鳥瞰樓下情景，加入熱烈氛圍。在平面延展的部份，兩座樓層均鋪設不鏽鋼天花板，利用鏡影延伸空間高度，映照出一座與之同步對應的世界，連綿的空中鏡像串連著各處發生的動態，人群能在仰望中相互觀察、了解彼方活動，即使身處兩處，也可以在空中交會的眼神與微笑裡開啟互動。此外，挑空區的磚牆嵌入多座假窗，窗內鋪設反射材質，創造出深遠曖昧的景深效果，在視覺上產生向外延伸的錯覺，破除了室內的封閉感。

1. 一樓，入口吧檯是綜合功能的前導空間，讓甫入場的賓客能在此暖身，觀望室內動態，也有助於人群彼此開啟交流。2. 一樓，吧檯檯身施作水泥壓花塑造立體浮雕的效果。

1. A long gallery allows a buffer space in case of congestion 2. The first floor bar table and its cladding material - pressed pattern cement panel



全案空間主調為六〇年代復古風情，設計師擷引不同的風格元素進行碰撞，以多樣化的材料給予觀者復古訊息，大量運用經典菱格紋以及印花圖騰呈現華麗感。在昏黃的光線中，座椅穿戴色彩亮麗的織品，地坪鋪設仿古花磚，多座立面以紅、灰磚施作菱紋拼花，特別的是，許多復古元素都因現代選材而轉化成不同面貌；例如，吧檯檯身與局部立面，使用水泥壓花的工法塑造立體浮雕效果、VIP室門屏以水紋玻璃與直紋中空板交錯運用的方式，擬仿上海老玻璃的朦朧美感，無不拋開了材料運用的既有習性。另一方面，空間亦加入了粗獷的工業元素，讓整體風格不致於陷入過度細膩柔情的取向裡，設計師回溯工業時期大量鋼鐵元素的特色，刻意讓建築結構與燈架裸露，配以金屬材料的運用，為全案帶出鮮明的個性感。大量的復古與工業語彙拼貼，混合鋪展於兩座樓層之中，在空間豐富的鏡像映射裡，疊構出一幅幅動人畫面，使賓客能循著這些視覺線索，觸動那些似曾相識的記憶。



5

本案透過當代手法翻轉了風格元素與空間感受，大膽的將時間、空間、物質重新組合，這些複雜材料在細膩的光影鋪陳下逐漸融合，編製成一座新舊共生的世界，將賓客置處在新與舊、虛與實之間遊走，沉浸於既溫暖又個性氛圍中，自由的閱讀和參與。

採訪 | 劉蕙蘋

3. 一樓，鋪設不鏽鋼天花板延伸空間高度，透過鏡像效果連貫空間各處發生的動態。4. 一樓，主場空間的吧檯，以兩座L形中島框圍出寬闊的工作區，滿足四方人群的調飲需求。5. 一樓，挑空區垂直連貫兩座樓層，立面多道旋轉屏風豐富了後台動線，服務人員可以避開擁擠人潮，自由的抵達工作區塊，也提供表演舞者更靈活的現身方式。

3. The first floor and its reflective ceiling treatment 4. L island bar area allows customers to look around in a wide scope 5. Revolving screens can be used by performers or service people



6. 一樓，將地景概念運用至空間裡，利用踏階與平台的結合建立中間層，提供不同高度的觀看視角。7. 一樓，踏階可通往VIP室或連結至梯區。特意將踏階加寬的目的，是希望予人可隨地而坐的輕鬆感。8. 一樓，VIP室規劃下沉式座位，以一座伸展台連結桌體，這座長台貫穿內外，除了是桌面，也兼具了動線與表演舞台等功能。9. 梯區。扶手採用茶玻璃與鐵件，維繫視線穿透的空間特色。
6. Steps and platforms form an interesting terrain like an interior land art installation 7. VIP room that directly links to the stepped area. The steps are easily used as seating for watching performances 8. VIP room and its seating layout. The sunken seat allows the table to be turned into a cat walk for performances 9. Staircase and its details





10. 平面圖。11. 二樓，二樓吧檯主要服務沙發區的餐飲需求，為賓客提供更精緻細微的服務。12. 二樓，挑空區連貫兩座樓層的牆面，使用紅、灰磚施作菱紋拼花。二樓賓客可自圍欄旁俯瞰一樓動態，參與一樓表演節目的熱烈氛圍。13. 二樓，空間鋪陳昏黃光線，家具穿戴色澤鮮明的織品。14. 二樓，大量採用復古與工業元素的拼貼，在豐富的鏡像對映之中，疊構出許多動人角落。

10. plan 11. The second floor bar and its service layout 12. Red and gray color diamond shaped pattern tiles cover many partition walls in the second floor 13. Colorful fabric furnishing in the second floor 14. Industry elements on the second floor provide a surreal mood of the space

The project is a food lounge joined with several restaurants and a bar spaces. There is only one entrance which ushers customers into a main court by a long gallery. The first sight inside the court is a bar area where contains a small space for waiting or having a drinks. Another space is situated near a double-floor central court. An island style bar allows customers to peer over the entire space and enjoy a bartender's performance. On the second floor there is another bar table where bartenders take orders and offer drinks to the customers sitting in this area.

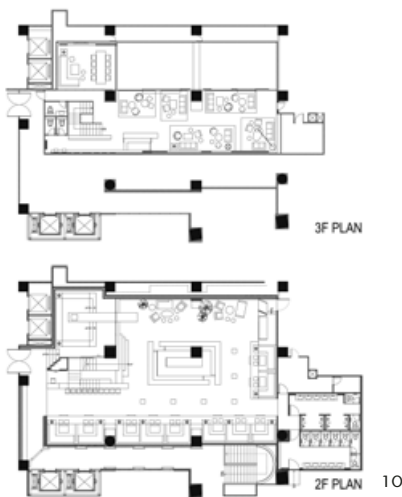
Even though there are only two floors in this restaurant, it is rather dynamic like a changeable terrain full of up-and-down land forms like natural geography. The VIP room is situated on an upper platform with steps that lead directly to a multiple height space. Also, there are extra wide steps where one can easily sit and allows customers to take a long look at a performance. Inside the VIP room, a long table dominates the space and is surrounded by sunken seating. The long table can also be joined with steps outside the room and forms a linear catwalk that allows performers to enter the room.

In the main hall, there are several swirling screens in the positions that allow performers to hide then make a surprise entry.

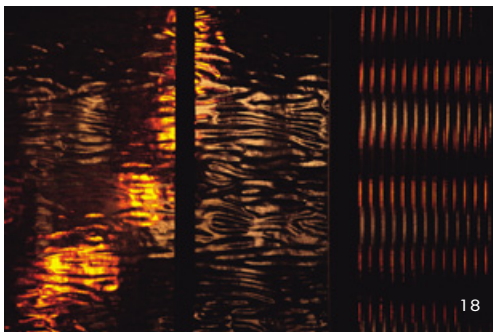
A big portion of the floor is completely open to yield a total connection between the lower and upper floors; the linkage allows the customers on the lower or upper floors look at, and hear each other. The ceilings of the two floors are all clad with stainless steel panels. The reflections on the ceiling surfaces further enliven the energy of the space and extend out a virtual space of rich layering. There are several fake windows on the partition walls; the glasses of the windows are reflective and provide both visual and spatial illusion to the space.

There are many nostalgia elements dating back to the 1960s in the restaurant. These include fabric printed with patterns that were popular at that time like those with diamond shapes and floral patterns mixed in a seemingly luxurious but somewhat old fashion

impression. Sofas with colorful pattern, antique pattern tiles and other obscure materials look so familiar yet surreal as can only be imagined in a dream. Mr. Kan's innovative design includes cast cement block to replicate typical relief sculptures and hollow boards on the surface of a water-wave pattern flat glass. The way that Kan uses material is not restricted to the pragmatic but rather yield an ambiguous overlap which gives a strong sense of disorientation of time and space. An example is the rustic metalwork that plays an important role in derailing the linear conception of time and precision of a space. The material creates an elusive impression as if one is standing inside an industrial relics and time has been sucked into a black hole.







18

15. 二樓，特意裸露建築結構與燈架，讓工業元素為空間帶入個性感。磚牆嵌設多座假窗，窗內的反射材質創造出深邃曖昧的景深感受。16. 二樓，洗手妝容區的鏡面參仿條碼造型，在燈光襯托中更加立體。17. 二樓，酒窖比鄰洗手妝容區，大量反射面的運用，讓廊道空間顯得深邃而不窄迫。18 VIP門片，使用水紋玻璃或直紋中空板仿造老玻璃的朦朧特色，豐富立面變化。
15. Exposed structural elements and rustic metal light fixtures give the space a surreal impression 16. Lavatory lighting design 17. Wine cell and a dress corner near public lavatory 18. An innovative design for a sliding door of the VIP room



15



16



17

建材分析 Material Analysis

1. 鋪設不鏽鋼天花板，利用鏡影延伸空間高度，在連綿的鏡像中反映各處動態，讓人群能在仰望中相互觀察、融入彼此氛圍。2. 營造六〇年代復古風情，運用經典菱格紋以及印花圖騰呈現華麗的視覺效果。家具採用色彩鮮亮的織品，地坪鋪陳花磚，以紅、灰磚施作菱紋拼花貫穿兩座兩層。3. 吧檯檯身與局部立面使用水泥壓花塑造立體浮雕的效果。4. 加入粗獷的工業風格，特意裸露建築結構與燈架，採用大量的鋼鐵元素，為空間帶出個性感。

1. Stainless ceiling panel extends space and visual wonderment 2. Old fashion motif and diamond shape pattern fabric and similar pattern floor tiles are used 3. Pressed pattern cement blocks are used for cladding above the bar table 4. Rustic metal lighting fixtures and structural elements gives the space an impression like an old industrial relic

溝通重點 Communication Notes

1. 更動入口位置，並順勢劃分出L型長通道，便於規整場外的排隊秩序，更清晰的指引動線方向。2. 突破平面樓層的界限，以垂直連貫與多層次地坪重塑空間層次。3. 將地景概念運用至空間中，利用踏階與平台的結合建立中間層，創造多變的高度與視角。4. 以挑空、鏡像等手法，促進場域彼此溝通。

1. Long gallery from entrance to main court makes way for a buffer zone 2. Vertical linkage was created to provide energetic activity between floors 3. Land art idea is applied to complete the plan layout 4. Mirror reflection and void court gives space a dynamic energy