

The Spaghetti House, Hong Kong





JOEY HO DESIGN / 何宗憲 Joeyho Design / Joey Ho

新加坡大學 建築學士
 香港大學 建築碩士
 2003年獲選日本Studio Voice亞洲創作VIP之一。
 香港設計師學會選錄為2021二十名年輕建築師之一。
 香港《Perspective透視》選錄為40 under 40大中華區40位設計新人類。
 2008年獲室內選為香港傳藝節十大傑出設計師。
 現任香港室內設計協會副會長、香港專業教育學院專業顧問。
 B.A. Singapore University
 M. A. Hong Kong University
 2003 VIP Member, Studio Voice, Japan
 He is listed as one of twenty rising young architects in H.K.D.A.
 《Perspective》selected him as one of the top 40 young designers in Great China Region
 Top ten designers, selected by the Hong Kong Traditional Art Festival, 2008
 He is now a Vice Chairman of the Hong Kong Interior Design Association(HKIDA); he is a lecturer at H.K.P.T .and a consultant of Hong Kong Vocational Education

設計者 | 何宗憲設計有限公司 / 何宗憲
 參與者 | 黎凱婷 梁淑婷
 攝影者 | Graham Uden, Ray Lau
 空間性質 | 餐飲空間
 面積 | 56坪
 坐落位置 | 香港將軍澳東港城
 主要材料 | 油漆、清玻璃、清鏡、紅色夾膠玻璃、藥水砂圖案玻璃、紅油底玻璃、可麗耐、布料、木紋防火膠板、亞加力膠、馬賽克、牆紙、地毯
 設計時間 | 2009年11月至12月
 施工時間 | 2009年12月至2010年2月

Designer | Joey Ho Design Ltd / Joey Ho
 Other Designer | Ms. Momoko Lai, Ms. Yuki Leung
 Photographer | Mr. Graham Uden, Mr. Ray Lau
 Project Nature | Restaurant
 Area | 185 sq. m.
 Location | East Point City, Tseung Kwan O, Hong Kong
 Material | Paint, Clear Glass, Clear Mirror, Red Laminated Glass, Clear Mirror w/. Acid treated pattern, Red Painted Glass, White Painted, Corian, Fabric, Laminated Sheet, Acrylic, Mosaic, Wallpaper, Tiles
 Design Period | Nov 2009 to Dec 2009
 Completion Date | Dec 2009 to Feb 2010

The Spaghetti House位於市中心的大型複合娛樂商場內，該中心以年輕、熱愛時尚的客群為主。設計師規劃本案時，連結青春活力、廣場意象與義大利麵等元素，形構新穎的空間風格。

設計師依順基地原有的多塊狀平面調配成各具特色場域，廊道式座區置入環形卡座微妙的區隔出領域感，而位於全案中心的廣場區則以一座雙向式的長型座椅作為主軸，藉由椅背微高的姿態延展出平行式的座椅編排，椅背的高度變化不僅生成出廣場區的景深層次，賓客背對背的反向視線亦可迴避與陌生人對看的尷尬感。此外，使用品牌主力產品義大利麵作為裝飾語彙，讓義大利麵種類中最家常的圓麵條造型鋪排於長廊區的立面，局部天花板則表現天使細麵捲曲成的手繪線條，讓空間與餐盤裡盛裝的真假麵條相映成趣。

設計師從義大利的生活點滴汲取靈感，引用義大利人民熱愛自然、交誼以及城市廣場風景等元素，建構別致的用餐環境。為長廊區吊燈裝飾花葉圖騰，而廣場區的天花板則以雙葉組合的雕塑板創造出富含結構美感的風景，立面使用深受年輕族群喜愛的卡漫繪畫作為裝飾，整座廣場由天馬行空的大小繪圖組合而成，如同將人們在廣場裡天南地北的閒聊內容，幻化成現實空間中的視覺語言。同時，廣場區使用各款設計座椅為空間營塑活潑氛圍，讓賓客能隨意的選擇鍾情座椅。壁紙圖騰亦可隨著時節變遷作更換，透過輕量改裝創造餐廳的新鮮感。

設計師認為，餐廳設計必需將顧客納入才能體現完整性，因此全案在色彩計劃上使用強烈對比的紅白雙色作為主調，加上服務人員的黑色制服，共構出清新且朝氣的視覺基調。透過空間大量純淨白色所蘊生的舒適感，不僅統合了複雜的造型元素，讓各個角落裡的趣味細節產生點睛效果，更襯托出往來賓客的繽紛衣飾，突顯了賓客為餐廳主角的內在意涵。採訪 | 劉蕙瑛

1. 廣場區立面採用卡漫繪畫作裝飾，天馬行空的繪圖組合如同人們在廣場裡天南地北的閒聊內容。
 1 Comic drawing used in the "plaza" space represents free speech in the public zone

The Spaghetti House is located right inside a commercial complex so it is a hot spot for young and trendy customers. The style for this restaurant offers visual and spatial attraction for people delight in bright air and dynamic energy.

The plan layout shows there are several zones, independently run in various styles. The central zone lines up a series of long rows of chairs in a back-to-back positions and the height of the chair-backs are different. A distinct decorative pattern derived from spaghetti was adopted to cover the surface of the gallery and ceiling; the pop pattern is so real that incurs a sense of humor as customers eating their spaghetti feel they are being embraced by spaghetti.

Joey's design was inspired by Italian daily life so he took the cityscape and the way that Italians love public and social life as the concept to develop the design. The floral pattern appears in the long gallery, and the double leafage appears at the top of the ceiling representing a way of Italian life is closely linked to nature. Comic patterns used in the "plaza" signify the place is a platform encouraging all sorts of languages. One also finds different chairs, a way as is usually seen in a real public square. Wall paper on the surface follows the changes of season; the change give a fresh experience to frequent customers.

The color program is one of Joey's most important measurements of interior design; the restaurant has a dominating shock contrast of color; white and red compose the basic tone of the air while waiters dressed total black mediate within. The white color appears in a crucial position balancing the contrast and keeps the space in a surreal yet harmonized mood. Translated by Ray S.C.Chu & David Mark Riz

2. 將義大利麵作為空間的裝飾語彙，使用圓麵條、天使細麵造型與餐盤裡盛裝的麵條相映成趣。
2. Spaghetti pattern is used as a decorative pattern on the surface cladding







3. 透過空間純淨白色所蘊生的舒適感，不僅統合了複雜的造型元素，也讓各個角落裡的趣味細節產生點睛效果。4. 廊道式座區置入環形卡座微妙的區隔出領域感。
3. White colors appear in a crucial position balancing the sharp contrast of the spatial complexity 4. Circular chairs demarcate a space of belonging



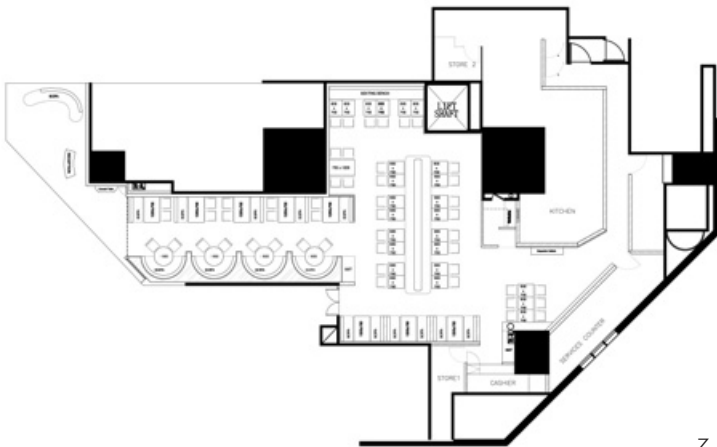


5



6

5. 在細部裝飾花葉圖騰，經營別致的用餐環境。6. 使用強烈對比的紅白雙色建構清新且朝氣的視覺基調。7. 平面圖。8. 廣場區的天花板裝飾雙葉組合的雕塑板，創造富含結構美感的風景。
 5. Decorative floral pattern in the dining space 6. Color contrast between red and white is strong but fresh 7. Plan 8. Floral deco pattern on ceiling top



7

