

# Tai Shan Villa

設計者」何宗憲設計有限公司 / 何宗憲

參與者」林德慧 溫振傑 鄧智堅 林錦玲 何裕文

攝影者」Dick Liu

空間性質」住宅

坐落位置」中國廣州台山

主要材料」清玻璃、磨砂玻璃、灰鏡、特色玻璃、灰玻璃、香檳金鏡、夾紗玻璃、清鏡蝕沙、布藝、戶外防水布、不鏽鋼、馬賽克、石材、可麗耐、地磚、膠片、膠板、透光仿雲石膠板、油漆、焗漆、真皮、仿皮、木皮、實木、戶外木、牆紙

面積」117 坪

設計時間」2013 年 10 月至 2014 年 2 月

施工時間」2014 年 3 月至 6 月

Designer」Joey Ho Design Limited / Joey Ho

Participants」Tindy Lam, Samuel Wan, Kin Tang, Joslyn Lam, Frank Ho

Photographer」Dick Liu

Category」residence

Location」Guangzhou, China

Materials」glass, gray mirror, special coating glass, gray glass, gold color mirror, laminated mirror, etching mirror, fabric, water resistant fabric, stainless steel, mosaic, stone, plastic plate, tile, opaque panel, paint, leather, artificial leather, wood veneer, solid wood, wall paperk

Size」387 m<sup>2</sup>

Design period」October 2013 – February 2014

Construction period」March – June 2014

何宗憲設計有限公司 / 何宗憲

生於臺灣、在新加坡及香港長大，香港室內設計師何宗憲為「何宗憲設計有限公司」及「書得起」書店的創辦人。於香港大學修畢建築碩士，隨後 2002 年將其用之不歇的活力及熱情自行創立其室內設計公司。設計專案類型涵蓋廣泛，屢獲殊榮。眾多知名作品在海外及本地設計項目至今已獲 100 個獎項。基於對多元文化的深入瞭解，何宗憲的設計手法前衛創新、體現深邃前瞻的願景，而不失大方與實用。其獨特的品味及觸覺展示現代主義的特色，認為空間運用須發掘潛藏生活中的實用功能，並擅長用象徵性的視覺形式來表達敘事觀點，試圖為生活體驗打破既定的意象，為生活重新定義。

Joey Ho Design Limited / Joey Ho

Born in Taiwan and grew up in Singapore and Hong Kong, Joey Ho received his M.A. degree from Hong Kong University. He founded his design firm in 2002 and has since received numerous awards domestic and abroad.

Interest in multiple cultures with a global ear, Joey loves to use more advanced design solution such as building the direct link between art, architecture and interior space. His work delivers a strong abstract impression and can be interpreted by several perspectives derived from cultural symbolism.

Joey Ho



本案位於溫泉度假區，環境清幽秀麗，自然景觀隨著季節更迭各具特色，這座溫泉別墅設置的目的，是希望能作為屋主休養生息的環境，在私人時光裡享受與綠林、溫泉相伴之樂趣。

全案以「自然純美」作為主題，設計師希望將環境綠意延伸至室內空間，令別墅生活隨著外境風景產生不同感受。基地位於斜坡上，前臨社區道路，後向蔥翠綠林，每座樓層均可享有自然採光與戶外景致。在規劃上，室內空間首先改造既有梯座，將這座垂直動線改以鏤空階梯，並於側牆採用鏡面與線性扶手，突顯整體造型的線性結構，梯區上方開設天窗導入自然日照，一樓基座則以透光的雲石沁出燈光，讓人循著木質階梯拾光而上，行走其中感覺舒適而不封閉。

整座別墅以開放視景友善內外關係，內部規劃多座公共廳區鼓勵居住者交流互動，促進動態交集。對外方面，強調別墅與綠景相依的特色，使用大片落地玻璃窗連結環境綠貌，臨窗處設置坐椅供人隨興休憩，無論身處在別墅的任何場域，都能欣賞戶外風景，享受與自然為鄰的愜意。此外，每座樓層個別配置景觀花園、露台，這些戶外場域均有精心造景，經營豐富的動線層次，庭院規劃多處休閒坐區，安排露天溫泉池，藉由這些舒適而豐富的設施，誘引居住者踏至戶外，呼吸自然氣息。

全案以木色、純白、綠意共構舒適的視覺基調，設計師更進一步將自然意象實體化，再透過工藝手法鑲入別墅空間。餐廳、臥房均使用大量木材進行裝飾，例如：餐廳用木條勾勒起伏的立體牆身與天花板，臥房以木條排序創造色塊變化。細觀這些裝置造型，創作靈感皆來自於大地生機，或將木質紋理放大為裝飾圖騰，又或以俯瞰大地的角度，將地貌扁平化為色塊拼接，整體作工均保留了木質的樸實特色，它們在純淨背景裡交織出新的景色，彼此相似卻不重複，靜靜在空間裡變奏各種風貌。

設計師將自然意象凝煉為抽象造型，提供居住者一個聯想自然的指引，對照著環境景致，讓空間不僅抒發了個人對於自然的想像，也見證著四季嬋變之面貌。值得強調的是，在循著自然而生的創作路徑下，設計師並不堅持於具象或抽象的表徵手法，而是回歸到個人心靈深處對於自然的感知，讓它們以最單純形貌呈現於空間之中，藉由這些抽象化的符號與造型，輕巧的穿梭於現實與聯想之中，讓居住者在日常裡，實踐著內與外、人與境相依相融的境界，正是這個作品的特殊之處。探訪」劉蕙蘋

1. 空間講究穿透、開放的格局，客廳天花板裝置琉璃燒製的葉片掛飾，呼應自然題旨。
1. Open layout in the living space and ceiling leaf pattern hand-made glass decoration





2

Situated right inside a hot spring resort, this retreat villa enjoys exceptionally good views. The client constantly uses this facility to enjoy the beauty of nature and its natural resource – the hot spring.

The design layout shows an intimate link between indoor and outdoor space and brings the most pleasant atmosphere to its dwellers when seasons change. Located on a sloping terrace the villa enjoys great front views while against a forest at its rear position. The staircase that links several floors is all hollow both in flight and handrail designs which were tailored by fine wood craft and details. The floor is illuminated by artificial lighting ingeniously hidden behind cloud pattern marble floor.

The layout displays a quite open relationship between indoors and out, and the interior is also open up to encourage the dwellers visual and physical links. Big glass fences the rim of the building while it is easy to be accessed by doors to balconies or gardens. A hot spring pool situated in the garden brings a direct contact to the true nature.

The interior color tone is based on earthy and white colors. Wood was used extensively in the dining space and bedroom. There are undulating patterns formed by a plethora of thin wood pieces in the kitchen and the similar layout appears in the bedroom while forming different patterns. Joey Ho proclaimed that the pattern is derived from a view from the sky looking down on Earth, and the pattern is represented by a similarity both in color and graphic.

The abstract representation of nature through material and texture is not just a metaphor but rather a pattern that provokes wonderment of Mother Nature. Joey's theory is that we can only image how closely the relationship between man and nature is when we can confront it in a true visual image. And through the daily confrontation of the image we learn our minor role in nature.

2. 餐廳，善用木條的靈活性，在牆身和天花板勾勒起伏的立體線條。3. 餐廳，將木質紋理放大為立體裝飾，透過工藝手法為空間創造視覺變化。4. 餐廳與梯區，空間以木色、純白共構舒適的視覺基調，令別墅有著清新素雅的面貌。

2. Dining space and partition wall treatment, woven into an undulating pattern with an abundance of wood strips  
3. Dining room and partition surface treatment  
4. Dining room and staircase view



3

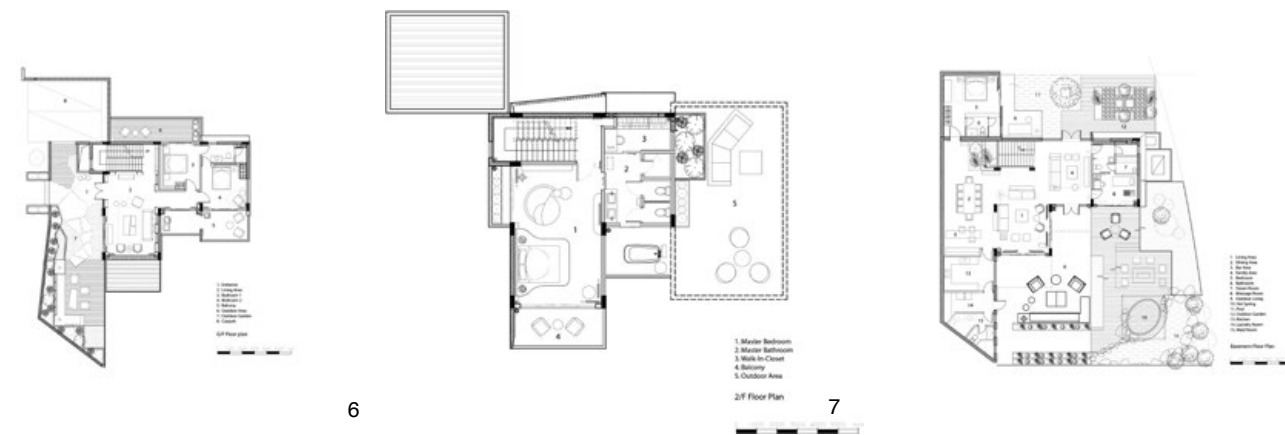


4





5



6

7

8

5. 位於地下樓層的起居廳，局部落地窗外使用竹枝作為格柵，調節採光入室的角度。主牆裝飾鑄鐵鍛造的飾屏，屏面的圖騰靈感來自木紋之美。6. 一樓平面圖。7. 二樓平面圖。8. 地下樓平面圖。9. 主臥房，設置舒適的休憩角落，以淡雅色調與柔和的照明規劃，使人放鬆身心。10. 主臥房衛浴，天花板鋪設鏡面，將綠意採光引入空間中。特意將主臥房的浴缸安排在半開放式陽台上泡澡時也能享受自然風光。11. 主臥房，牆面貼飾纖維壁紙與有機造型的鏡飾，藉由精緻質感呼應自然主題。

5. Living room and a bamboo screen close to the windows. Main partition shows the beauty of a wood pattern in cast-iron 6. The first floor plan 7. The second floor plan 8. Basement floor plan 9. Master bedroom view toward a tranquil sitting corner 10. Master bathroom and its tranquil ambience 11. Master bedroom and its partition treatment in fiber wall paper



10

9

11





12. 按摩室，以木質鋪面作為背景，與窗外綠意和諧呼應，在舒適的環境中使人放鬆身心。13. 梯區，一樓基座鋪設透光雲石並襯出燈光，梯側牆面貼飾鏡材加乘整體的明亮感，讓人循著木質階梯拾光而上。14. 次臥房，主牆利用木條拼接出色塊變化，質感素樸並有著工藝之美。15. 落地窗讓室內外視景相互滲透，將生活與環境綠意融為一體。16. 梯區上方開設天窗引入自然光線，梯座具有鏤空與開放感等特色，讓人行走其中感覺舒適、不封閉。  
12. Massage room, paved in wood, enjoys surrounding greenery and nature 13. Staircase and its material treatment 14. Second bedroom and its wood strip patterned partition wall 15. Big windows provide a direct link from the indoor to the outdoors 16. Skylight invites natural light to come down and illuminate the staircase

#### 建材分析 Material Analysis

1. 一樓客廳天花板裝置琉璃燒製的葉片掛飾，呼應自然題旨。2. 樓梯鋪設木質踏階，一側以木質扶手貫穿梯座，另一側貼飾鏡牆加強天窗灑下採光感受。3. 運用木料作為裝飾用材，善用木條的靈活性，在餐廳、臥房創作特色主牆，並且保留木材質樸特色，將自然氣息帶到室內。4. 起居廳局部落地窗外使用竹枝作為格柵，調節採光入室的角度，讓廳區日照明亮而不刺眼。  
1. Ceiling is decorated with hand-made glass artwork in a leaf pattern 2. Wood step and carefully tailored wood handrail responds to the natural light with a sensitive color and texture 3. Wood veneer and solid wood are used on the surface of the bedroom and dining room 4. Bamboo weaved into a screen in the living room screens out glaring sunlight

#### 溝通重點 Communication Note

1. 項目位於溫泉度假區，周邊自然環境清幽秀麗，設計上希望將大自然的靜謐氛圍延伸到別墅的室內空間，為居住者提供一個休養生息的環境，全案以素樸清新、質感精緻等特色，呼應環境自然優勢。2. 強調景觀之美，平面配置與視景規劃上儘可能採用開放式格局，並且讓室內外互相滲透，讓別墅生活能隨著四季景觀的更替而產生感受變化。3. 改造梯座，令連接三座樓層的垂直動線更具通透感，梯區開設天窗引入自然光線，讓人行走其中感受舒適而不封閉。4. 位於地下樓層的起居廳講究開放性，利用大量的玻璃窗引入採光，讓空間能反映出時序、季節之變化，拉近人與環境的關係。5. 以自然純美作為設計題旨，選材或造型都呼應自然概念，並透過工藝手法讓入空間裡，回應屋主在意的精緻質感。  
1. Located right inside the hot spring resort district, the villa is fully submerged in nature 2. Spatial layout shows a free and flexible interior, which has a transparent relationship to the outdoor landscape 3. Staircase is an innovative design which allows light to easily penetrate from top to the floor level 4. Living room on the floor level faces the outdoor landscape with total transparency 5. The space responds to the beauty of the nature with a delicate scale, material texture and construction details

