

# Flight of Grey

## 灰韻的狂草

設計者」創研空間設計有限公司 / 何俊宏  
參與者」張志焜 周盈  
攝影者」圖起乘李國民影像事務所  
空間性質」住家  
坐落位置」臺灣臺北市  
主要材料」木皮、鐵件、灰玻璃、樂土、木地板、擴散板  
面積」45 坪  
設計時間」2014 年 4 月至 6 月  
施工時間」2014 年 6 月至 10 月

**Designer**」 Create+Think Design Studio/ Arthur Ho  
**Participant**」 Nicole Chang, Ying Chou  
**Photographer**」 Figure x Lee Kuo-Min Studio  
**Category**」 Residence  
**Location**」 Taipei, Taiwan  
**Materials**」 veneer, metal member, gray color glass, Lotos, wood floor, sound-insulation panel  
**Size**」 149m<sup>2</sup>  
**Design period**」 April – June 2014  
**Construction period**」 June – October 2014

創研空間設計有限公司 / 何俊宏

2005 年創研空間設計設立  
2002 年何俊宏空間設計工作室設立  
香港商穆氏設計設計師  
紐約 Gene Kaufman Architect P.C. 設計師  
紐約 Naomi Leff and Associates, Inc. 設計師  
丹麥 DIS 建築及設計課程研究  
紐約 Pratt Institute 室內設計碩士

Create+Think Design Studio/ Arthur Ho

2005, Create + Think Studio was founded  
2002 Arthur Ho Design Studio  
Designer, M. Moser Associates  
Designer, Gene Kaufman Architect P.C.  
Designer, Naomi Leff and Associates, Inc.  
DIS, Workshop  
Master of Interior Design, Pratt Institute

Arthur Ho



### 方方楞楞 屋中一木盒

盤據十樓高、劃成上下兩層的二十年舊宅，原平面配置一如臺灣傳統住家講究高效率使用，使得獨立房填塞且動線蹇澀壅閉，在實際踏勘屋體後，本案設計師何俊宏首要考量便是恢復場域水平；其次，昔日樓梯突兀架於室內，提升它和空間之相對合理性與流暢感為另個設計主軸。樓梯作為銜接上下動線，普遍多以過渡機能待之，但何俊宏觀點裡，空間本質，其垂直串聯與水平連綴等量齊觀，尤其本案已無縱深優勢可勾摹（如挑高），梯間作為龐碩量體亦為垂直溝通樞紐，載負了場域起承轉合節奏感、前後相隨脈絡，自此規劃就無法再因陋就簡而蹈襲了事。

推敲平面時，幾經斟酌樓梯的最佳配置仍是原處，唯型態上藉由一道轉向動作，使其與場域相互關係更和睦，但當中最大設計想像，乃是何俊宏將梯間構造擬比成一座虛實相間、內有堂奧的「大木櫃」。倚牆所設樓梯，設計先引木做來框塑，將一樓梯間與其側立面鍛鑄成大塊體，繼之再以包覆挖開視覺手法，讓梯間成虛、立面為實（隱藏式門片），至於吊懸木踏階彷彿櫃中彈出的機關，若退開距離、從遠觀窺這整幅畫面，其方方楞楞之形儼若開了一個口的藏密大木盒。擴張比例、飄浮木踏階，以及那無法窺究的樹身，好似攀躋而上、沒身其內便能抵達另個次元。

對於這般結構，何俊宏不諱言其實是機能為先，他解釋：「怕空間變得無趣，所以才將鏤空處做一種個性化詮釋，於是梯間開了口，踏階好像從木櫃裡長出來，接著一路竄到樓上，一來一往，創造引人揣想的趣味性。」不僅如此，踏往梯間能見轉折處以斜切割高低差平臺配襯著深淺顏色木料，藉錯開水平、彩度濃淡互見來隱喻空間遞衍。如此大塊體在方正規矩中，亦藉由對線秩序、得宜比例來達成縝密幾何編排。故而每逢上下屋間，總能領略樓中幾何別趣演繹，慧點創造出積木堆疊般那酣放的立體感。

### 以遮代隔 長軸迎邁

本案每道樓面約 20 坪，為復甦舊屋輟止的水平，一樓格局處理是將所有機能退往牆面，藉以換取全敞空間感，而自玄關為起點，由外至內依序配置起居室及餐廚區，至於樓梯旁的隱藏式門片後，則是方便屋主擺置、清洗潛水設備的儲藏室與洗衣間。故瀏覽此公共場域，碎化及冗贅單元消失後，只見起居室堆起音響設備，沙發、矮几自述風情，廚房則擺放雕塑般的不鏽鋼廚具及酒櫃，蘊藉一股風雅有致丰儀。

1. 整合成開放空間的餐廳廚房，覆蓋在水泥及原木的基調中，顯得一派溫潤靜好。  
1. Dining room and kitchen display a rustic intimacy



2



3



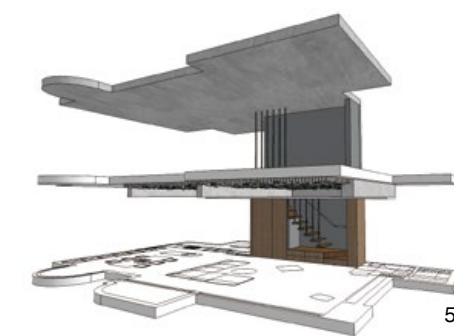
4

自梯間攀抵二樓，眼前躍上具備中介及緩衝概念的書房，在動線意義上，其宛若將主臥及次主臥歸納於左右兩脅，讓方向界定涇渭分明；至於平面作用，乃是取書房開放性以形成儼若梯廳的恢廓感，同時掣引對向漫灑窗光。對此配置，何俊宏闡述其觀點：「當不得已要仰賴獨立空間時，概念上依舊是開放性去隔，盡量破解很多小房間擠在一塊的感受。」這般操作手法亦實踐於主臥室，長向拉開的臥房輪廓，有臥鋪、更衣間、洗手檯及淋浴間等單元，一一填入後平面自然碎化，前後景深難貫徹。唯設計上善用轉折迂行動線來摺出分區，讓水平終能邇進相接；或見局部挪用高穿透性材料，使光不被隔牆吞噬。因而瞻望整座主臥房，在以遮代斷策略下，真正隔牆不過兩道。

### 灰韻成篇 滄彩寧穆

灰色空間的主題，在案中是以各異其趣的元素來陶鑄澎湃感受性與震盪效果，猶似灰色的行草，肆情自由、氣韻纏綿，但氛圍卻因質樸素材的稠疊相砌而一派清穆無華。由於起居室為男主人聆聽樂音、鑒賞專業器材的天地，但許多音樂發燒友私人殿堂，往往是器材凌駕空間之上，所以總獨設一處以避免環境紛紜駁亂；唯本案中，何俊宏適度將繁雜吸音材轉化作裝飾語彙，使之能和場域融糅。在視覺表現上，鋪覆天花之吸音材態樣是以灰色、攢聚叢簇長方體綴滿天花，一來使聲音均質不尖銳，也勾摹出一種奇譎景觀，似鐘乳石結晶體，亦好似幕蓋於頂、皮革感的吊穗流蘇。至於主牆上的條紋狀擴散板，則是以直、橫交錯拼貼，製成一幅灰白線條當代畫。隨之過渡到餐廚場域，起居室浮突皺褶的材料表情猶馴化般嬗變成平滑的不鏽鋼金屬，實踐屋主所欲專業廚房型態。對此何俊宏解釋：「一樓部分大致沉浸在灰色基調中，並利用不同質地、濃淡深淺去激盪出層次，產生不同形狀和肌理。」

灰階風格盤桓而上，唯在沉澱身心的二樓空間轉以璞真素材涵養謐穆氛氳，包括浴缸上方一道原始大樑即是模板卸下後的裸裡風情，而不僅木地板紋理如墨痕，舉凡天與壁皆用樂土（Lotos）此種水泥砂漿鋪砌，藉純然去蕪材料觀點，攫捕出某種手作塗抹的皮層韻致。採訪 劉芝君



2. 綴滿天花、如結晶體般叢簇的構造物亦為吸音材。3. 自玄關而進為起居室，是男主人聆賞音樂的天地。4. 考量美學以及吸音材與空間的整合，設計將擴散板視為一種裝飾材，並用拼貼方法呈現於立面上。5. 3D 模擬圖。  
2. Grotesque shaped insulation materials like gray color crystals  
3. Living room is a paradise for a music lover  
4. Insulation panel clad over on the surface of the wall like abstract art  
5. 3D drawing



### A box inside a box

This apartment unit is on the tenth floor with two levels. The existing plan was too cramped to yield an optimized space. Two tactics were undertaken; the first was to change the staircase and the second was to tear down unnecessary partitions. Arthur believed that the most critical element in this space was the staircase and that it had to be treated not just as a functional element but rather as a fun space that mingles the vertical and horizontal energy of the unit and invites the energy of the family. Even though many positions were proposed, the final decision was to keep the staircase in its current position yet totally transformation its shape so it was built inside a big box covered in wood. It is partially open and can be seen from one direction as a totally closed box. The staircase flights are a fun design; each is supported by metal frame too thin to be seen. They all look like they levitating above the ground like magic. Arthur confessed that this staircase is the element he tried to use to add fun to the space. He created an interesting interpretation of the up-and-down experience; while ascending to the upper floor, one finds the color changes and the flights seem to make transform from one geometrical pattern to the other.

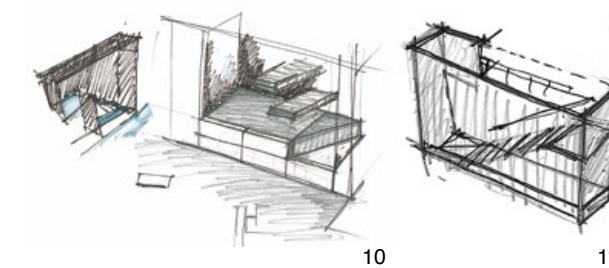
### Soft partitions

The plans of the lower and upper levels are each 66 square meters; the first is designed to contain the foyer, living room, dining room and kitchen. A small space hidden behind staircase is storage and a utility room for the laundry machine. A portion is also given over to store a diver's suit and equipment. The living room has a neat partition design for the stereo. Kitchen is equipped with good stainless cookware like a modern art piece.

The second floor has a reading corner situated in a mediating position that that provides access in opposite directions to two bedrooms. This reading space enjoys good light and spacious reading and relaxing positions. The layout for the master bedroom is designed to create a rich layering instead a feel of a single room. A single twist of the bedroom plan yields an extension of the experience as the room gradually open to the eyes. Arthur applied proper light access and reflective materials to complete the mission.

### Perfect gray

Gray is the main tone of the space; this color is sensitive and abstract enough to accept any approach to dwelling in the room. The client's daily interest is to linger in the living room to enjoy music and the room is usually a social venue for friends of this music lover. Sound insulation below the ceiling appear like art pieces or grotesque elements in a cave. The wall surface is clad with sound insulation panels in geometrical patterns like abstract art.



6. 昔日封閉的舊屋已煥然成明媚豫朗的場域。7. 異於起居室吸音材所展現的凹凸與不規則質地，媲美專業廚房的烹飪場域擺置一系列不鏽鋼廚具，顯得洗鍊當代。8. 銜接上下空間的樓梯，立面也以灰藍色呼應兩處空間的襯底材料，藉此拉攏垂直關係。9. 自玄關瞻看梯間以及開放空間的大景。10. 樓梯概念手繪稿一。11. 樓梯概念手繪稿二。

6. Light and ample living room 7. Shining kitchen space marks a sharp contrast to the living room 8. Staircase and its blue-gray color system 9. A view from the foyer towards the staircase 10. Hand drawing – staircase 11. Hand drawing – staircase



12

12 攀抵二樓即見書房，取其私密性不高、無須仰賴隔間來銜接樓梯場域，以便同時引入窗光並塑造梯廳般曠達韻味。13. 銜接上下空間的樓梯，立面也以灰藍色呼應兩處空間的襯底材料，藉此拉攏垂直關係。14. 從次臥望向書房，可察設計利用書房為中軸，疏濬出通往主、次兩臥房的清晰動線。15. 從書房向次臥房瞻看。16. 自書房右側轉進即為主臥房，為保持空間開闊感，房中不用實隔牆而轉以動線曲折來遮出分區。17. 清玻璃作為寢寐區和淋浴間的立面隔層，讓窗光得以掣引至底。

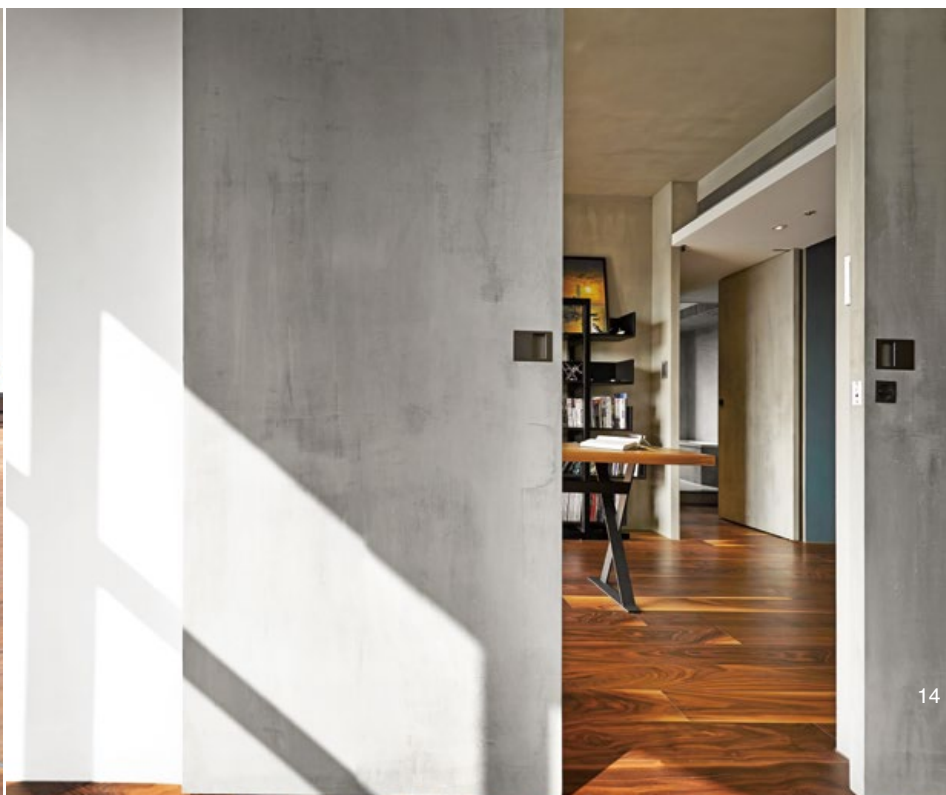


15

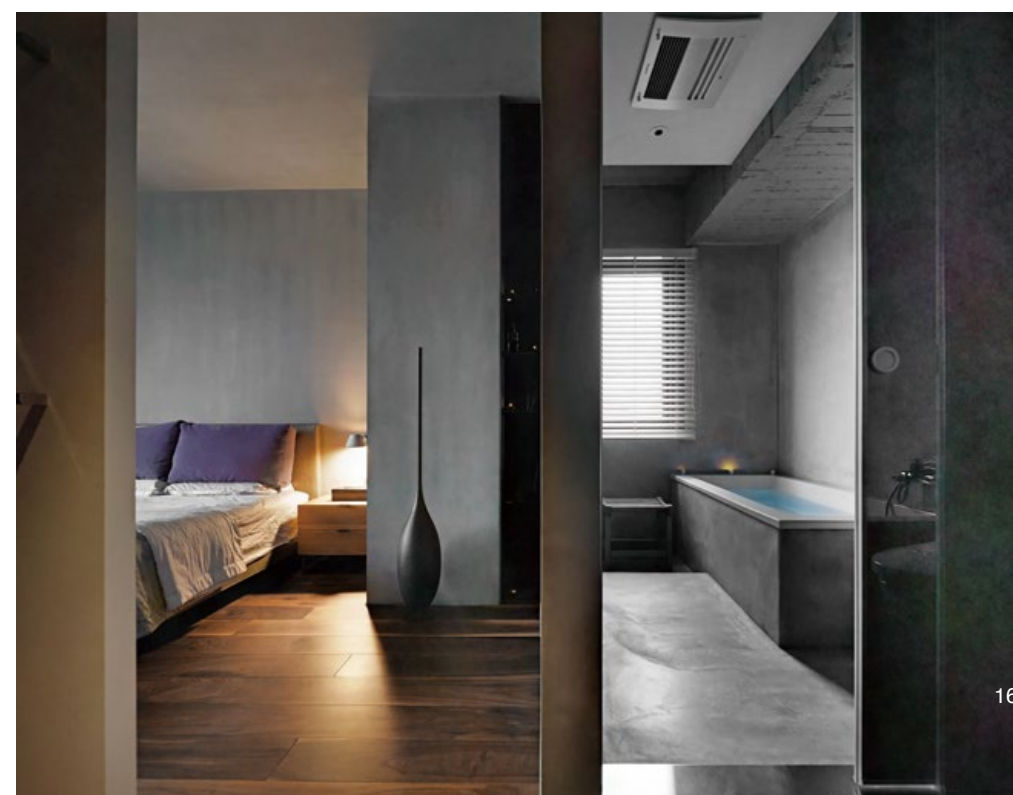
12. Reading room on the second floor enjoys natural light 13. Staircase and its blue-gray color system 14. A view from the second bedroom towards the reading corner 15. A view from the reading room towards the bedroom 16. Master bedroom has a twist turn that seals the direct view from the reading room 17. Glass panel divides the bedroom and bathroom



13



14



16



17



18. 更衣間與臥鋪區相連，藉著巧妙分隔讓機能單元成立，亦可無礙水平軸線貫穿。19. 溫潤的水泥皮層讓身心得以沉澱。20.21. 主臥衛浴一隅，天地壁之水泥與自然材料，氣質如洗。22. 一樓平面圖。23. 二樓平面圖。

18. Closet and bed set immediately links 19. Rustic exposed concrete in the bathroom 20.21. Bathroom 22. The first floor plan 23. The second floor plan



In contrast to the organic and soft sound insulation elements used in the living room, the kitchen uses many metal materials and the cooking table and cookware all display dominating stainless surfaces. The second floor is completely private so the interior is more subtle and imitate. Wood textures and a exposed concrete beam in the bathroom reveals a sensible approach to the essence of nature.

#### 建材分析 Material Analysis

1. 用來聆聽音樂的起居室，天花鋪覆密集吸音材，牆面另有擴散板。
  2. 本案以灰色材料襯底，包括國人研發、由水庫淤泥製成之樂土 (Lotos) 此種水泥砂漿。
  3. 本案採用具白邊與紋理強烈的胡桃木，捕捉自然質美。
  4. 起居室櫃體材料為節眼紋理橡木。
  5. 細部材料包括鐵件、不鏽鋼和玻璃。
  6. 樓梯扶手為不鏽鋼內嵌隱藏式照明。
1. Living room is covered in sound insulation material 2. Gray color is the main tone of the room and a special mortar from reservoir soil was used extensively 3. Detail of joint and walnut floor 4. Oak wood was used for the cabinet 5. Detail joint —metal, stainless and glass 6. Staircase handrail and lighting system

#### 溝通重點 Communication Note

1. 男屋主為音樂發燒友，需要一個能享受音響的環境。
  2. 女屋主擅長小提琴演奏，故室內需配置一個練習空間。
  3. 對生活享受頗有心得的屋主，對於烹飪同樣關注，因此廚房規劃必須媲美專業，並配有藏酒機能。
  4. 屋主期待室內為寧靜的灰空間，但依舊不失溫潤感。
1. Male owner is a music lover; he needed a space to enjoy music 2. Female owner is violinist; she needed a quiet space for practice 3. Cooking equipment is professional 4. Client's demanded an intimate space yet should be furnished in gray color tone