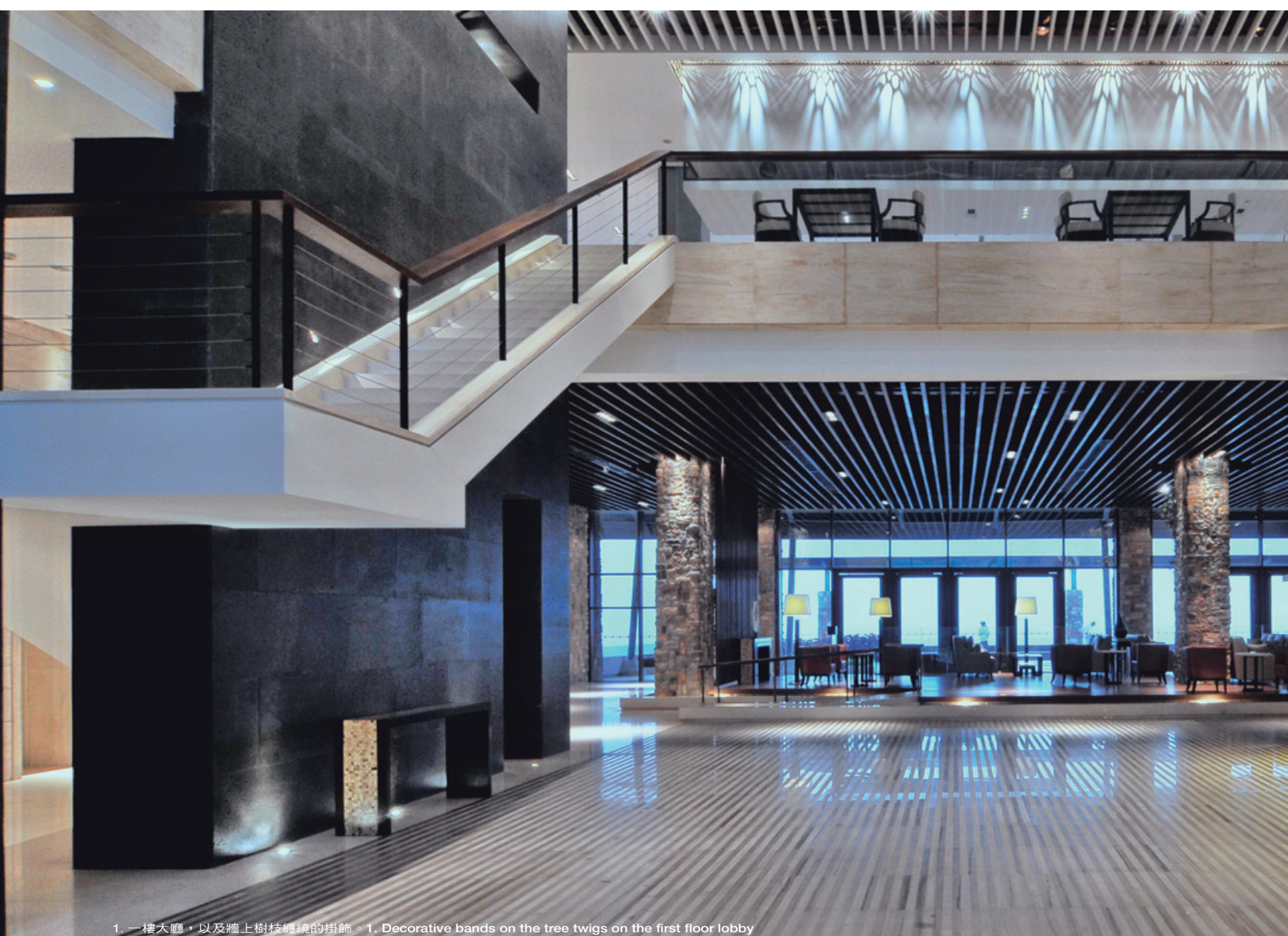


Nature Beauty, Tianjin

峰麓，天津

| Aesthetic Living |



1. 一樓大廳，以及牆上樹枝纏繞的掛飾。 1. Decorative bands on the tree twigs on the first floor lobby



梁景華

1978 畢業於香港理工大學設計系，主修室內設計。之後加入Alan Gilbert & Associate (當時最大的國際酒店設計公司之一)。1987 加入 P&T Architects & Engineers Ltd. 巴馬丹拿建築事務所，不久，榮升為聯營董事。1992 得世界首富李嘉誠先生垂青，成為香港頂級設計師之行列。1994 成立 PAL 設計事務所。2000 被選為香港室內設計協會副會長，積極參與行內公職。2003 年被邀請出任香港貿易發展局中國貿易諮詢委員會委員。2004 獲得亞太區室內設計大獎會所組優異獎。

Patrick Leung

1978, Graduated in Design Department of Hong Kong Polytechnic University with distinction (Major on Interior Design). Joined Alan Gilbert & Associate as Designer. 1987, Joined P&T Architects & Engineers Ltd. as Senior Designer. Then, Promoted as Associate and invited to the Board of Director of P&T. 1992, To handle many high-end residences for billionaires in Hong Kong. 1994, Set up own design firm known as PAL Design Consultants Ltd. 2000, Invited as judge for the Asia Pacific Interior Design Awards. 2003, Invited as HKTDC China Trading Counselor Committee 2004, Won a Honorable Mention of Asia Pacific Interior Design Awards - Club Category.



設計者」 PAL Design Consultants Ltd. 梁景華

坐落地點」 中國天津市薊縣

空間性質」 億豪山水郡國際度假酒店

主要材料」 大理石、皮質家具、精細布料、天然木片、樹枝

面積」 約5000平方米

完成日期」 2008年6月

Designer」 PAL Design Consultants Ltd. Patrick Leung

Location」 Tianjin, China

Category」 Resort Hotel

Materials」 textured marble, leather furnishing, fine fabrics

Area」 approx. 5000 sq.m.

Completion」 June 2008

依山而建的天津億豪山水郡國際度假酒店坐落於薊縣，在北京與天津之間，它沒有大城市的繁華喧囂，只有擁抱大自然的寧靜獨特。因此，住在附近的城市人，十分鐘愛這間寧靜低調的酒店，喜歡來此度過愜意的休閒週末。

由於環境與建築物非常配合，在初始構思中，室內設計得以投入貫徹始終的感覺。將建築物外觀引導入室內環境，營造內外合一的效果。不僅如此，可以更細緻地將室內設計發揮得淋漓盡致。

突出建築的獨特形態是首要的設計理念，設計者巧妙地運用原結構的柱樑外露，如外國酒店外觀一樣散發的粗獷感，使得任何位置都可感受到渾然天成的氣勢。

為了打造鮮明的對比效果，從細緻上著手，大理石、皮質家具、精細布料等等，予人一種柔和舒暢兼精品時尚的休閒感覺，可媲美瑞士山峰度假酒店般的頂級享受，變成周邊城市年輕一族新貴們樂於一訪的場所。

另一特色之處是搜羅大量的自然藝術品、天然木片裝飾、樹枝纏繞掛飾、如飛翔中的鳥群石膏雕塑，成為大廳的焦點，目的是打造不平凡的美學觸覺，創造了另一形態的天然環境。

寬敞的酒店套房，設計上力求一致性，並加添中國的骨子味道，優美的條子散發於書房、寢間及衛浴間。灰調主色則散發著清雅的時尚感。頂樓的複式套房最具建築味道，下層為客廳，上層的寢間天花是斜角的，中間的玻璃天窗採納自然光，善用原有建築空間，營造有趣的視覺體驗。



2. 建築與周圍的大自然景觀。3. 斜向出挑的建築結構與露台。4. 一樓大廳沙發區。5. 沙發區四周牆面的裝飾。6. 木頭裝飾細部。
2. Building and surrounding landscape 3. Protruding structure and balcony 4. The first floor sofa zone 5. Decoration pattern surround the sofa zone 6. Wooden furnishing elements

對於商務人士而言，這間酒店兼備了一切商務需求的設施，如酒店大堂、室內泳池、會議廳、中西餐廳、桌球室、卡拉OK房…等等，這裡吸引了不少新人在此舉行婚宴，宴會廳的豪華設計、富麗堂皇，同樣也是蜜月旅行的理想勝地。

本案從室內設計出發，結合了建築元素及現代主義，線條簡潔卻充滿時尚動感，著重於不同的設計創意，不同色彩牆面的對比，卻又運用傳統圖案作粧點，充分表現出這是一個格調非比尋常的休閒空間。文字與圖片提供「PAL Design Consultants Ltd.。文字整理」編輯部

註：本作品 “Tianjin Resort Hotel-Nature Beauty” 榮獲 “The Bronze Medal of Asia Pacific Interior Design Awards 2008 (APIDA)。”

Built at the mountain, Tianjin Eagle Lang International Hotel, strategically located at Ji County, is the intersection between two big cities Beijing and Tianjin. Without any crowd and noise, the sight of surrounding hotel is natural environment and offers pleasant views of greenery from interior. Thus, it is a definitely good place for the local residence to retreat at the leisure weekends.

Because of the building form and external views are perfect matched, therefore, in our concept, it gives a deep sense of continuity and unity at the space that architecture and interior design blend harmoniously and emphasizes on the visionary of the whole.

Stand out the unique form of architecture is our prime concept. Columns and beams are the great advantage of the building, so we concentrate on the presence of original structure that it is common at the spatial design for contemporary hotels to create a sense of rough. This style gives the interior ambience a stunning feel of naturalism.





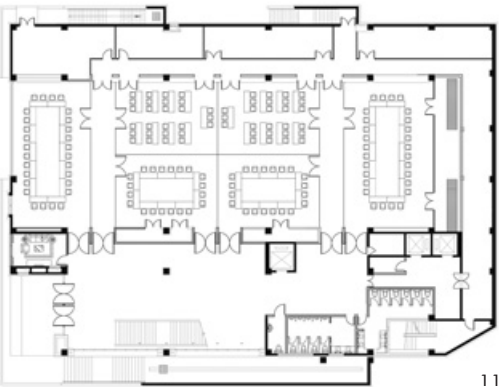
4



5



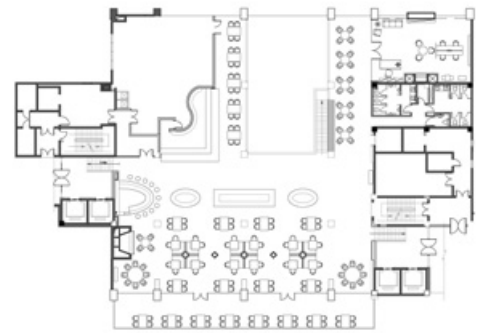
6



11



12



13



8



10

7. 粗獷的磚砌牆面和柱子，呼應室外的自然景觀。8. 天然木片貼飾的牆面。9. 木格柵有穿透的視覺效果。10. 飛翔中的鳥群石膏雕塑。11. 一樓平面圖。12. 二樓平面圖。13. 三樓平面圖。
7. Rustic brick texture on partition and columns echo nature sensuality of the surrounding. 8. Natural wood veneer features the texture of a partition. 9. Wood mullion and its details. 10. Gypsum sculpture featuring flying birds. 11. Plan, the first floor. 12. Plan, the second floor. 13. Plan, the third floor.



To set the contrast effects, subtle materials have been used such as textured marble, leather furnishing, and fine fabrics creating a sense of cozy, chic and comfort at the leisure hotel where the guests enjoy the luxury treatment as Alpine types of resort.

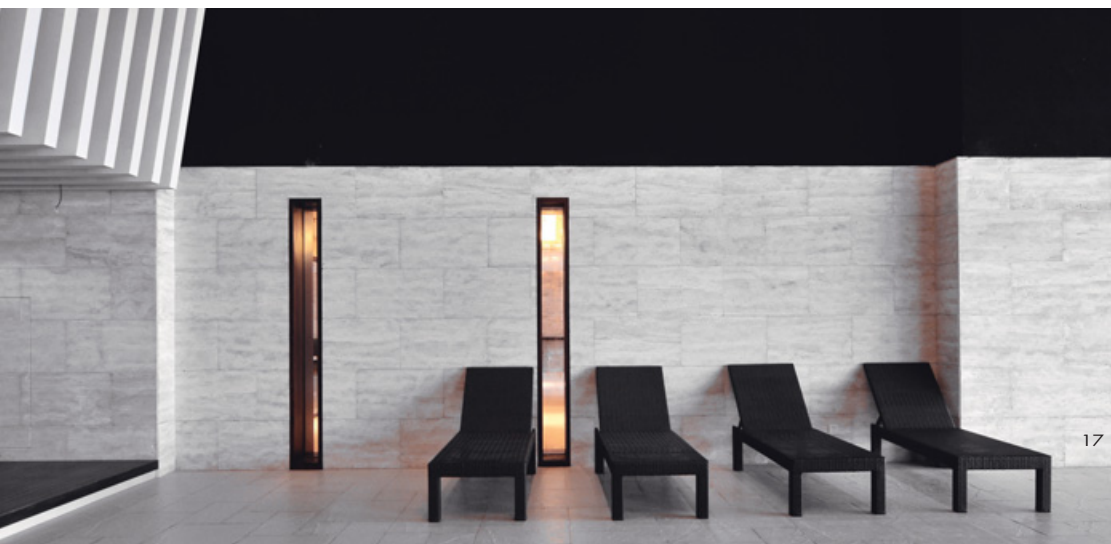
Natural arts collection could be preserved. Good examples are wall features made of timber or entwined bough while flying-birds sculpture is made of gypsum. Those decorations become the focal points at the hotel lobby for the creation of aesthetic strength.

The suite design is consistent. Moreover, it mixed with Chinese touch such as simple stripes appeared at the living area, sleeping area and bathroom thus warm grey tune makes a mix moody of elegant and chic. The duplex suite with high ceiling is unique on space where it creates a completely open atmosphere from natural light through a skylight.

This brand new resort provides both business and leisure facilities for guests such as hotel lobby, indoor swimming pools, conference room, Western and Chinese luxury restaurants, billboard room, and karaoke room. Moreover, there is a perfect venue for wedding banquet at the Grand Hall as well a desirable place for honeymoon.

We have created a friendly, pleasure interior that perfectly fits into the contemporary resort approach which the concept for architecture and interior design are blend in modernism. Text and Images by PAL Design Consultants Ltd.

Note: Tianjin Resort Hotel—Nature Beauty which has awarded the Bronze Medal of Asia Pacific Interior Design Awards 2008 (APIDA)



14. 梯階以及鏤空的牆面裝飾。15. 處處可見自然藝術品裝飾。16. 大片落地窗將戶外景觀引進室內。17. 泳池旁的休息區。18. 室內游泳池。
14. Stepped pattern and hollow decorations 15. Artistic feature decoration in natural material 16. Grand window introduces a natural view into the room 17. Rest lounge next to the swimming pool 18. Swimming pool







19



23



24



25

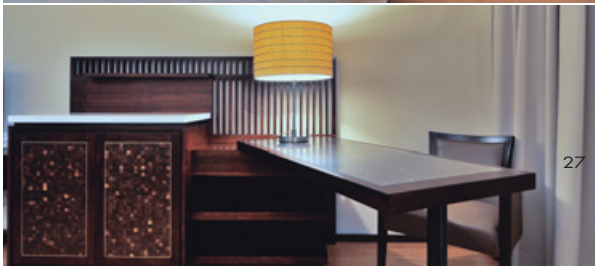


22

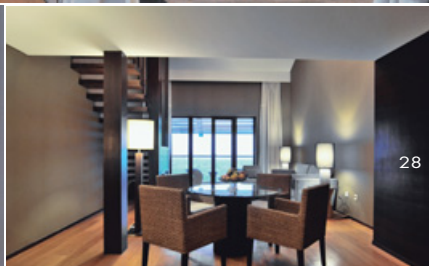
19. 柱梁外露的建築結構。20. 休息區。21. 走廊與它特殊的牆面處理。22. 木頭與大理石建構出特殊的氛圍。23. 每個不同區域的關係。24. 餐廳區。25. 精緻的玻璃細部。26. 套房。27. 套房內的辦公區。28. 套房內的會客區。
 19. Exposed structural elements 20. Rest Area 21. Long gallery and wall surface treatment 22. Wood and marble builds up an unique spatial quality 23. Spatial link between the spaces 24. Dining room 25. Glass in fine details 26.27.28. Suite room



26



27



28