

Double Core

設計者 | 創研空間設計有限公司 | 何俊宏

參與者 | 張志焯 陳佑昇

攝影者 | 李國民

空間性質 | 住宅

坐落位置 | 台灣

主要材料 | 石皮、洞石、實木皮、鐵件、玻璃、海島型木地板、進口石英磚

面積 | 60 坪

設計時間 | 2017 年 1 月至 6 月

施工時間 | 2017 年 6 月至 2018 年 2 月

Designer | CREATE + THINK DESIGN STUDIO / Arthur Ho

Participants | Nicole Zhang, Jimmy Chen

Photographer | Koumin Lee

Category | Residence

Location | Taiwan

Materials | stone skin, travertine, veneer, steel, glass, wooden floor, tile

Size | 198m²

Design period | January – June 2017

Construction period | June 2017 – February 2018



開闊窗景帶來令人驚豔的視覺體驗，坐享日夜風情；

充足採光明亮了室內，使一家人的相聚時光更加無與倫比。

「生活處處是戶外景觀」是何俊宏設計師為本案所下的定論。基地於台北市中央，且為 20 樓高的高樓層住宅，建物本身具有面寬 17 米、6 米寬的落地窗和陽台，以及 7 米寬的半腰窗，可鳥瞰戶外窗景，市容與台北盆地山巒都可從住家中一覽無遺。業主對設計團隊的風格有一定程度的了解，僅告知生活方面的需求，其餘大部分以設計師提供的方向進行討論；何俊宏表示，女主人閒暇時喜愛製作糕點，故十分看重餐廚區域，他遂從「基地優勢」與「家庭情感面」兩者切入，延伸出 Double Core 的概念，一個是由城市景觀形成的核心，另一個是連結居住成員情感的中島核心。

Core I：書房是線形空間的軸心

第一個核心，是將城市景觀當作空間中最自然的視景畫面，希望在室內可以無死角的由不同角度欣賞外部景致，設計師進一步解釋，由於空間需求單純，他將起居空間（客廳）、主臥室沿窗佈局，並在兩者之間創造一個具過渡性質的中介空間，作為彈性使用的書房，再以不規律排列的金屬框玻璃旋轉門，讓空間彼此串聯卻又有界定功能，玻璃材質的運用為室內帶來穿透不阻隔的視覺效果，拉門開啟時能引進大量的光線和景色，與全室分享，闔上時則可完整享有私領域的隱私；此外，風帆意象的天花造型扮演串起各場域的關鍵角色，人字拼木質地坪亦由公區延續至臥室，靠窗側動線利用一致的尺度帶出整體感，並更加貼近壯觀景色。

前述所提風帆意象天花板，何俊宏說會如此規劃的原因，是現場環境給了他想像，設計該如何與窗外美好景致呼應並銜接，現場樑柱問題又該如何遮掩，他從各個面向進行發想，最終決定以「一艘漂浮在城市中的船舶」作為切入點，風帆天花於是誕生。有鑑於天花板內藏管線，天花施作上須考量日後管線維修的便利性，因此每片風帆除用鐵架支撐外，另有轉軸五金，可將其掀開，甚至能進行微小的角度調整，精細工藝是本案最具挑戰的一環。

1. 高樓層基地可將壯麗台北市景盡收眼底。設計師從「景觀」與「情感面」著手，以兩個設計主軸貫穿居住環境。

1. The high-rise apartment enjoys terrific views, which gives the space an exceptional impression.

Arthur Ho



創研空間設計有限公司 / 何俊宏
創 = 開創力 / 創造力; 研 = 研究力 / 思考力;
創 + 研 = 理性與感性的結合, 左腦與右腦
的並用, 有生活的實用, 有心靈的感觸。
用心思考、熱情創造, 希望將設計團隊對
空間的看法與詮釋, 提供給客戶不同的空
間體驗與感受。

何俊宏 / 創辦人 & 總監

2005 創研空間設計設立 · 2005 展宜建築
設計總監 · 2002 個人空間設計工作室設立
· 中原大學設計學院室內設計系兼任講師
· 香港商穆氏設計規劃有限公司設計師 ·
紐約 Naomi Leff and Associates, Inc. 實習
· 紐約 Gene Kaufman Architect P.C. 設計
師 · 丹麥 DIS 建築及設計課程研究 · 紐約
Pratt Institute 室內設計碩士
重要得獎紀錄: 德國國家設計獎、ELLE
DECORATION 家居廊 中國室內設計年
鑑、義大利 A'Design Award、德國 Iconic
Awards – Winner、現代裝飾國際傳媒獎、
德國 Red Dot 最佳設計獎、日本 GOOD
DESIGN AWARD、香港 APIDA 大獎、美國
The American Architecture Prize 室內
設計 / 住宅、美國 Architizer A+ Awards
Category +WATER 評審團特別獎、美國
IDA Design Awards 辦公空間榮譽獎、台
灣室內設計大獎 TID 金獎

Create + Think Design Studio / Arthur Ho
"Create" = power of creation; Think =
power of research

"Create + Think" was formed to generate
immersions of sense and sensibility. The
team's philosophy is to bring an aesthetic
spirit to the design rather than superficial
form.

Create + Think Studio / Arthur Ho
2005 Create + Think Studio was founded
· 2005 Director, Chien-Yi Architecture ·
Instructor, Department of Interior Design,
CYCU · Designer, M Moser Associates ·
Interim, Naomi Leff and Associates, Inc. ·
Designer, Gene Kaufman Architect P.C. ·
DIS Course Study · M. D. Pratt Institute
Award Records: German Design Award,
ELLE DECORATION Annual Almanac,
A'Design Award, Iconic Award, IDA
Design Award, Architizer A+ Awards, The
American Architecture Prize, TID Award,
etc.

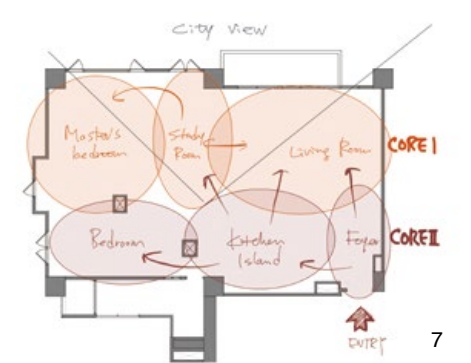
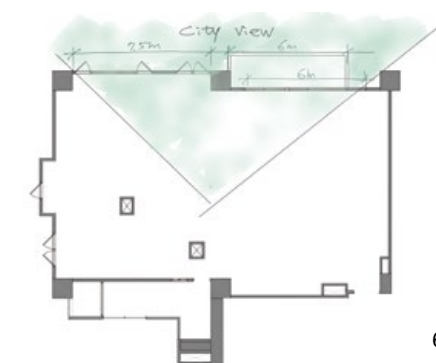


2. 風帆意象的天花實屬本案亮點之一，設計師將空間給予他的感受轉化成造型語彙，企圖賦予空間「漂浮於城市中的船舶」概念。3. 起居室、書房與主臥室沿窗景佈局，並透過地坪達到串聯效果。4. 不規律排列金屬框玻璃旋轉門自由開關的特性增添空間使用彈性和層次。5. 平面圖。6. 設計概念簡圖 1。7. 設計概念簡圖 2。

2. Boat sailing is an iconic element of the space, and the element seemingly lifts the space into the air. 3. Living room, reading room and bedroom enjoys window views. 4. Irregular rhythm rotating windows gives a flexibility to the space. 5. Plan. 6. Conceptual drawing A. 7. Conceptual drawing B.

Core II：中島廚房是家庭的核心

相較於第一個核心較偏線性概念，第二個核心則企圖將一家人凝聚於中央，宛如放射線一般，讓居住者的生活軌跡從中島擴散出去，具有收納烹飪相關物品功能的深色木櫃以 U 形圍繞著中島廚房和玄關，而以粗獷石皮打造的入口衣帽間，則分隔出此二空間；另一側則以深色木皮牆面延伸至公用浴室，並藉由二樞拉門不同的開闔形成有獨立衛浴的臥房，也因其位於大空間的邊陲，故綴以繽紛色彩打造專屬兒童的生活場域。何俊宏提到，他運用石材、展示層板、書架等元素定義出空間的邊線框架，至於軟件、燈具的擺放並非採取固定形式，而是改以錯落模式來呈現，希冀用隨性卻不失秩序的設計語彙和線條，營造如同在遊艇般的自在休閒氛圍；地坪則擷取帆船輪廓，以人字形拼法與風帆天花相互照應，強化飄揚馳騁帆船的隱喻。絕佳的景觀是空間發想的起點，設計團隊希望不論居住者在任何角落，都能與室外產生對話，盡覽城市晨昏變化之美，享受生活的美好時光。採訪 陳映葵





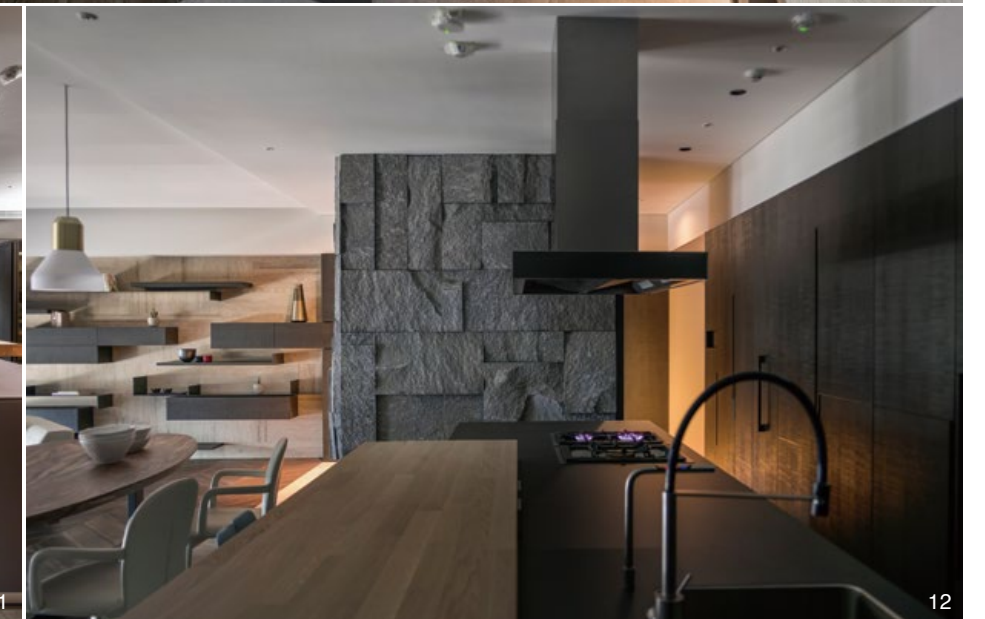
8



10



11



12

8. 軟件的擺放以較為錯落、不固定的方式呈現，強化輕鬆休閒氣息。9. 客廳和主臥之間的書房，讓場域規劃產生連貫性，而非直接一分为二。10. 拉門可完全卡進矮櫃中，讓主臥室成為完整的私密空間。11. 深色木櫃收納著烹飪相關器具，櫃體有多種開啓方式，可依需求使用。12. 石皮量體為入口衣帽間，並區隔玄關與中島。

8. Furnishing elements are scattered in the space with no strict orders. 9. A reading room stands between the living room and bedroom. 10. Sliding door can join with a cabinet in a secret compartment. 11. Dark color cabinets with many compartments stores cooking utensils. 12. A cloak room divides the lobby and living space.



9

The base is located in the center of Taipei City, 20 storeys high, 17 meters wide, with six meters wide French windows and balconies, seven meters wide half-waist windows, providing a bird's eye view of the outdoor window view; looking south, you can see the mountain ranges of the Taipei Basin.

Core I: The study room is the axis of linear space

Along the window is the living space, the study, the master bedroom, and the wooden floor with herringbone to connect the adjacent window space to form a linear space;

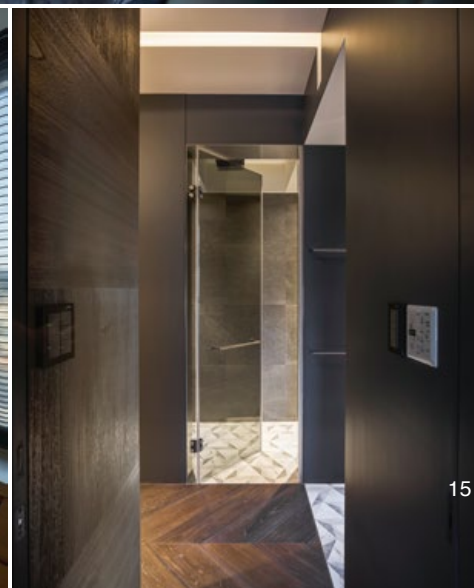
On one side, the metal frame glass revolving door is arranged in a deliberately irregular arrangement to connect with the living space. The travertine book wall is like a spatial end view at both ends of the space. The sail imagery is connected with the ceiling, and the furniture is arranged in a staggered orderly manner. The design elements and lines create a casual atmosphere like a yacht.

On the other side, the sliding door is connected with the master bedroom. When the sliding door is opened, it is connected with the living space to form a 17-meter wide width facing the south of the city. The largest amount of light and scenery can thus be introduced, which can be shared in the whole room. Lying in the bed by the side of the window has exclusive views of the city and the mountains surrounding the basin.

Core II: Nakajima Kitchen is the core of the family

There is another linear space below the window line space. The Nakajima kitchen is located in the center. The family who loves cooking can perform their duties in this area and complete a meal together. This is the core position and behavior of the family's feelings; around the island is a dark wood cabinet with cooking-related storage functions. The U-shaped kitchen surrounds the Nakajima kitchen, and the entrance cloakroom of the rough stone skin separates the two spaces.

On the other side, there is a shared bathroom with a dark veneer wall extending inward into the bedroom separated by two sliding doors to form an independent bathroom for bedroom design. Since it is located toward the edge of the large space, therefore, the color tone can be liberally applied with colorful colors for the living space of children.



"Living with outdoor view everywhere", the superb landscape is a clue to the initial imagination of the space. I hope that any behavior in life can form a dialogue with the outdoor landscape, whether it is in the living space along the window, the master bedroom space or the second floor of the Nakajima kitchen space, with family members together or alone. Enjoy your good life with the superb outdoor view!

13. 主臥沿窗台做一矮櫃，轉化成窗景的一部分，不僅具有置放物品的機能，亦能營造框景效果。14. 人字形拼法的地坪一路從公區綿延至私領域，維持住宅的一致性。15. 通往主臥衛浴的過道。本案大量選用深色系材料，捎來沉靜韻味。16.17. 主臥廁間一隅。18. 公用衛浴一角。19. 色調繽紛的兒童房因位於基地邊陲，濃烈的色彩並不會與外部產生衝突感。

13. A framed outdoor view in the living room and a low cabinet forms the front view. 14. Herringbone wood patterned floor extends thoroughly in this apartment. 15. A dark color passage. 16.17. Bedroom. 18. Bathroom in public zone. 19. Colorful kid's room.

建材分析 Material Analysis

1. 業主喜愛深色木皮、實木、石材等材料，設計團隊遂以沉穩調性塑造空間氛圍，並在粗獷中注入細膩質感。2. 書牆材質選用洞石，並以不規則拼貼手法呈現。3. 因空間感較為開放，在家具型態上須清楚設定，例如利用島型沙發帶出圍塑感；也依照各區塊重點進行燈具配置。4. 業主講求住宅的高格調，軟件大多以義大利品牌 Poltrona Frau (伯爵那) 為主。

1. Client's favorite materials such as dark color veneer, solid wood and building stone were used extensively and all the details were carefully addressed. 2. Cavity stone were used to clad the book wall in an irregular orders. 3. Furniture pieces are placed to form spatial boundary and lighting placement is set in a precise dialogue with the furniture setting. 4. Poltrona Frau pieces are used in many spots.

溝通重點 Communication Note

1. 因著基地壯闊的外部風光，與家人間的情感交流等面向，設計師發展出兩個設計主軸，提供適合的居住方案。2. 書房作為客廳和主臥室的過渡空間，利用玻璃旋轉門兼顧開放和隱私的需求。3. 本案在軟裝部分均依空間屬性以及需求進行配置。

1. Two design concepts dominate the layout of the space. 2. The reading room stands in a position acting as a mediating space between the master bedroom and living room. 3. Interior furnishings are different from one room to the other.