

# Enjoyment of Greenery

## 簷下賞芋菓

設計者」好室設計 / 陳鴻文

攝影者」Hey! Cheese

空間性質」住宅

坐落位置」台灣

主要材料」西班牙窯片磚、木紋水泥板、復古直紋玻璃、黑色烤漆鐵件、樂土特殊水泥、橡木實木皮、德國超耐磨木地板、仿木紋地磚

面積」35 坪

設計時間」2015 年 6 月至 8 月

施工日期」2016 年 3 月

Designer」HAO Interior Design Studio/ Ivan Chen

Photographer」Hey! Cheese

Category」Residence

Location」Taiwan

Materials」Spanish tile, wood pattern cement board, glass, painted black color metal member, special cement, oak wood, German rustic resistant floor, artificial wood pattern tile

Size」116m<sup>2</sup>

Design period」June – August 2015

Completion period」March 2016



新砌石踏板自圍牆門邊迤邐朝著簷下蟠行，人行其中，

便可窺著小路探翫這蔓草駢闐入階臺所生澹美，尤其正對庭院的客廳，

讓日常偃仰每一刻皆與芋菓綠茵共徜徉。

如此設計之手，讓這小屋一庭院也就倍覺愜意了……

巷陌內有一三角翠苑，斜長的邊把老屋護藏於櫺爽庭草後，新砌石踏板自圍牆門邊迤邐朝著簷下蟠行，蜿蜒蜒蜒、迂迂繞繞下把整片綠園子都踮躅仔細了，每逢人行其間，便可窺著小路探翫蔓草駢闐入階臺那股澹美。佇屋前，小房傳統山形頂和紅瓦白磚牆顯得古拙，但正對前院的清透玻璃門窗則將豫朗、洗鍊的風味給鑄進量體中，尤其室內敞放無隔的生活場域，讓偃仰日常每刻間都愜意地和芋菓綠茵共徜徉。如此簡明又自然的處理，是好室設計觀照庭院、挑高小屋和光線後，藉既存條件來深化空間之質後的成果。

### 動線紆繞 增視景

本案為屋齡近一甲子、坐擁草木疇生庭院之山形輪廓小房，基地雖方正且有 70 餘坪，但室內可用面積不過半數之多，加上僅一樓層、垂直尺度亦受下降斜屋頂而稍有減損，實際上不算寬綽。老屋則皮層封閉性高，輔以大門收在建築側邊，讓外入內動線上得從庭院一端窄小過道折繞進去方抵，除了器量上頗感跼促一隅，縱有潤澤綠園在畔，卻因格局擊劃失利而導致觀望動態不甚豁朗；其次老宅二次增建處有縱深不足闕漏，頂上空間略顯拖沓溼鬱。釐清住宅前前後後景況下，本案設計師陳鴻文表示空間作為兩口之家雖稱不上褊狹，但如何就基地條件截長補短、裨益氛圍良美是他破題所繫。

斟酌屋體優劣後，陳鴻文著眼庭院之趣，除了讓碧草妍蕩的青綠能充暢向室內灌溉，他還特地延長小園入主屋的動線，藉著儼若中式園林遞進迴繞之勢，加深景的張力與豐富度。對此陳鴻文談到：「起初建築入口是開在目前臥榻這一側的壁面，會直接從院子抵達屋內，動線效率雖然好，但戶外綠意其實是被忽略的。」於是在建築結構未大拆大建前提下，設計先修正入口動線，繼之再重釐大門位置並搭配大尺幅落地窗牖，讓量體高通透性的立面能廣迎一片綠茸茸草茵，使生活日常能和庭園共聘騫。

Ivan Chen



好室設計 / 陳鴻文  
好室設計創立於 2013 年，主要從事建築室內設計，提供住宅、商業、辦公空間規劃整合與工程管理，好室設計秉持生活是美學和態度的呈現，期盼將美好生活體驗實踐於空間中，讓人與場域激盪對話與互動。好的空間定義非在豪華精美，卻能藉精準設計深化人和環境的關係，從而感受空間的溫度，由人填滿空間故事——好事，好室。

HAO Interior Design Studio / Ivan Chen  
HAO Interior Design was founded in 2013 and it offers interior design of all kinds – residences, offices and commercial spaces. HAO's philosophy is to keep living in harmony with a sense of beauty and maintain a good dialogue with nature. A good living space is not its material richness but rather the feelings it conveys to the owners for its surroundings and towards their fellow residents.

1. 一樓高老屋有偌大庭院相襯，賦予寧謐氛圍。

1. A building on one floor meets a large scale garden

2. 設計改變原有住家進門位置，並轉由落地玻璃門窗增加視野通透性。  
2. Main entrance is accessed from the glass cover internal court



陳鴻文言及場勘之初，因舊格局分割瑣碎且開窗不足，室內日照顯得羸弱疏寡，因此彙整段落式的空間組成之際，更要豐潤場域日光風情。陳鴻文除了在建築正立面大開透明度，位在屋體底端、四邊不見光的主臥衛浴，則是從屋頂翼側割出一道橫長的天井，從垂直面擊引自然照明。再者主臥房與外頭車道一牆毗鄰，斟酌採光與避開擾攘景觀兩面向，設計從地板朝上闢了一道矮窗，不僅阻截紊亂視覺感，光自低處娉婷嫵娜而灑，讓沁入的亮度和質感別有曼暖味道。

#### 高昂低曠 品層次

室內格局上，陳鴻文先瞭解屋主生活所需著手。由於空間為夫婦兩人使用，足夠收納機能之餘，精於烹飪煮食的男主人對廚房自是講究。事實上，屋體輪廓方正，卸除舊天花後的斜屋頂構造，最高處約有4米，雖屋之兩翼緩緩壓低，但整體仍存有十分軒豁空間感。如此縱深以及意蘊清美三角庭院，陳鴻文於是將屋子前三分之一處的隔牆卸除而創造出長向大平面，並依序置入臥榻、客廳、開放式餐廳與廚房，讓生活空間迎顧著綿草萋萋穰穰那股盎然，頂上則享挑深下的昂然尺度。

至於空間壓低兩側，一端打造成臥榻，用相對平曠的方式解決空間運用，臥榻架高平臺內則配置收納櫃，機能之餘也用高低水平勾摹層次；至於彼端餐廚空間，廚具本身具收納性，側牆再用頗深的壁龕式開放櫃擱放電器等，繼之再用木皮材料包覆天花和立面，形成一個木造房般的樸美。對此陳鴻文談到：「雖然廚房區高度下移，但因水平空間相連而不顯得擠迫，尤其2.8米長的中島檯整合工作和用餐功能，為餐廳與客廳起了一個調和的作用。」在質材語彙上，客廳天花延續立面水泥肌理而以木紋水泥板詮釋，廚房流理檯牆面則鋪砌綠色窯片磚，藉以和周邊木元素齊蘊蓄田園韻致，每每凝觀這公共空間，無矯飾材料好似庭院自然膚紋的延續。

再者因老宅為祖父所遺留，輔以屋主父親有古董蒐藏，因此冀盼能將居家空間融入這些情感性物件，但考量空間屬於當代的明亮和簡約調性，古董物件塊體厚重、質地沉鬱古懋，因此陳鴻文在整合時特地挑選如茶几、矮凳之屬，使之作為一種特色物件來點綴。採訪 劉芝君

3. 原有隔間重重的老屋，重釐成豁達的開放式環境。4. 溫潤木皮搭配流理檯前綠色窯片磚，流露溫馨的鄉村風味。  
3. The space turns from jailed darkness to transparency 4. Warm color veneer contrasts the green color tiles on countertop table



On a triangular lot in an alley and right behind a garden's greenery stands a single floor house with a pitched roof covered with red tiles and painted in white. Walking into the garden, one is led by a recently paved stone path, down some twists that ends at a glass door. The well fenced court and interior meet in a layer where seemingly none existed before. Here, natural light is invited in to penetrate deeply into the interior.

#### Winding path in ample view

The building was built about sixty years ago. On the 116 square meters lot the building occupies only a humble half of the lot. The existing building is directly linked to the alley and the main door is hidden in a very narrow twisted corner. Also, an addition of a structurally awkward shape hindered its direct and ample interior quality. Ivan Chen, the designer, proclaimed that the challenge of this renovation work was to adjust the interior layout and allow the garden court to be the visual and physical center of the residents' life.

Chen considered that the existing way to enter the house was not interesting nor fun but efficient, and sealed the door. Then a new pathway and main door were created. The purpose was to reorient the entrance itinerary and allow an interior living space to directly face the garden court.

The existing layout suffered from a bad lighting quality and an alternative plan to tackle this by placing a new skylight on the roof to provide light to the most secluded space. The living space now has a transparent skin facing the garden and acts as a light source. Outside the master bedroom there stands a new fencing wall, which cuts off any troubling views from the neighboring community and invites high indirect light from above.

#### Humble pleasure

The spatial demands gave the design a clear picture for the alternative layout. The space for a couple was enough for daily needs but the quality of the space was problematic. To take advantage of its slanting roof which is about four meter height in the center and gradually slides down to the edge, Ivan created a continuous space in the front portion to level the strength of the edge and open it up to the garden. The higher center is allocated to the public zone and an open style dining and kitchen was created. This high-quality kitchen and fully equipped facility was highly demanded by the husband, who loves to cook and is a connoisseur of good food.



5. 主臥房用開低窗方法來避開車道紛擾。6. 利用天井做垂直取光，讓浴室氛圍頓時豫朗。7. 自主臥房望向廊道彼端的更衣間。8. 更衣間不改水泥與木頭材的主體感。9. 主臥衛浴的小磚面有甜美和懷舊氣質。10. 平面圖。



6



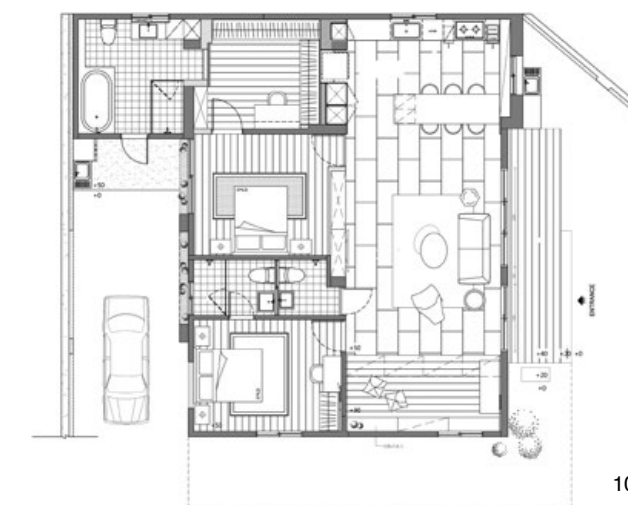
8

5. Master bedroom view and its low position window 6. A central courtyard invites natural light to enter 7. A view from the bedroom towards a closet at the pathway's end 8. Closet matches the living room ambience 9. Master bathroom is wrapped in small size tiles 10. Plan



9

The space at the low ceiling edge became a Japanese style room. The room has two floor levels and the bed set is placed at the high floor level. In the kitchen/dining space, the kitchen cabinets provide ample storage and creatively a deep niche for electronic appliances. Wood veneer wraps the space totally and forms the ambience of the wood cabinet. Ivan said: even though the ceiling height was not favorable it was expanded in the vertical direction to the maximum. The central 2.8 meter long island table plays a central role and mediates the living room in the horizontal axis. Material used in this home is rich but harmonizes with the mortar surface and vivid Spanish tiles. The exposure of the unpainted mortar in both the ceiling and wall dialogues with the wood wrapped kitchen in a very sensitive way which brings back memories of the year the building was erected by the husband's grandfather. Several old furniture pieces, such as tea pots, and low chairs, owned by their older generations are placed in several key positions.



10

### 建材分析 Material Analysis

1. 屋前用實木平臺打造成猶似簷廊的賞景空間。
  2. 公共空間及臥房區地面皆為超耐磨地板。
  3. 衛浴間用仿木紋地磚防潮並統籌語彙。
  4. 廚房流理檯壁面為西班牙窯燒磚。
  5. 中島檯上方吊燈為皮革搭配木頭，用自然素材營造質樸感。
  6. 客廳天花為木紋水泥板，藉以搭配樂土水泥的主牆。
1. Extending platform provides a place for leisurely comfort
  2. Rustic resistant floor paved in the public space and bedrooms
  3. Wood pattern tiles cover the bathrooms
  4. Countertop surface is clad in Spanish handmade tiles
  5. Hang lamps above the central island table use natural material in leather and wood
  6. Wood pattern cement panels cover the ceiling. They match the surrounding LOTOS cement walls

### 溝通重點 Communication Note

1. 屋主樂愛下廚，因此仰賴機能完備的餐廚空間。
  2. 屋主需求非正式的工作區域。
  3. 屋主父親平日蒐藏古董，希望將其蒐藏置入屋中。
1. Client loves to cook and demanded a fully equipped kitchen
  2. Client demands a home-office working space
  3. Antique collection from client's dad needed to be well stored and displayed