

Cozy Nordic Atmosphere

暇豫一屋景

設計者」好室設計 / 陳鴻文

攝影者」HeylCheese

空間性質」住宅

坐落位置」中國

主要材料」仿水泥粉光 PVC 地板、特殊水泥塗料牆面、白色仿舊文化石、實木門板烤漆、煙燻橡木、耐磨木紋地板

面積」35 坪

施工時間」2017 年 5 月至 2018 年 2 月

Designer」HAO Design/ Ivan Chen

Photographer」HeylCheese

Category」Residence

Location」China

Materials」simulated PVC board (RC surface), special paint, white color building stone, solid wood panel, smoked oak wood, rustic textured wood texture floor

Size」116m²

Construction period」May 2017 – February 2018



翫索這偌大居室，場域幕覆在雅潔的斯堪地那維亞風格中，白磚素壁、木天花及水泥粉光地板織譜出環境皮層，讓線條簡雅、顏色澹美的家具量體有了襯底。

斜屋頂是種妙趣蘊藉的建築輪廓，除了樣式憚懷人心，與其相應而生的內部閣樓若擊劃得宜，往往能攀附著尺度高低差形塑饒富興味的場域動線和微風景。這次好室設計所執行之海外空間案，是處坐落北京、35 坪大小毛胚房，山形宅中央有聳拔屋脊，兩側歇下頂蓋則如翼緩緩收歛，如此驟然起落的陟降動態雖洋溢出結構張力，卻也存在畸零隅角和兩端褊窄的設計限制。

斜屋頂下 造開豁景

是一體兩面亦為截長補短，本案設計師陳鴻文選擇將斜屋頂構造、挑高縱深這兩項優勢予以完整呈現，同時再以裨補斜屋頂格局闕漏為主軸，讓垂直抑或水平向量，皆朝無遮無阻、通透為先來規劃，藉此淡化下降處所生的蹇滯壅阻之感還有屋間多稜角等問題，在限制中勾摹至為豁朗、軒昂的氣象。對此陳鴻文解釋：「真實的天花輪廓與挑高是特色所在，因此結構不做任何包覆，而屋主夫婦買房另個心願，是希望孩子有個自由奔跑和遊戲的環境，所以室內也大量減少木作，轉以活動家具為主。」

確立環境藍圖後，格局實踐上則依據採光濃淡厚薄、垂直尺度縮放來歸納機能的核心與邊陲區，並斟酌挑高尺度拉出適宜的夾層以利生活空間分配。瞻觀一樓空間，建築迎蕙蕤樹景一帶由頂至牆闢出幾扇大面積斜角窗，於是毗鄰窗牖且高度聳起的屋中央則規劃成客餐廳相連的公共場域，沙發、單椅、矮凳、茶几和餐桌以疏闊慵閑的狀態陳列其中，家人能聚此共享霧霽日照與靜好時光；相對地，由平漸低的斜下處則配置了主臥、孩房以及遊戲室，開放式廚房則用活動式門扉去調控進深，亦可減少油煙逸散問題。前述種種設計邏輯，在於將最充暢、舒適的區域留給親子共享，再利用隱蔽性高、使用單一的獨立空間去消化不易運用的起伏頓折輪廓。

Ivan Chen



好室設計 / 陳鴻文

好室設計創立於 2013 年，主要從事建築室內設計，提供住宅、商業、辦公空間規劃整合與工程管理，好室設計秉持生活是美學和態度的呈現，期盼將美好生活體驗實踐於空間中，讓人與場域激盪對話與互動。好的空間定義非在豪華精美，卻能藉精準設計深化人和環境的關係，從而感受空間的溫度，由人填滿空間故事——好事，好室。

HAO Design/ Ivan Chen

HAO Design was founded in 2013. It provides interior design and construction consulting service in various categories – residential, commercial and office space. HAO Design believes that an aesthetic realization in daily life is a personal fulfillment as well as a connection to higher value of the human soul. A good space is not a luxury but rather a relationship between man and his surroundings.

1. 木框大窗搭配複層玻璃，不僅賦予室內充沛的自然採光，光影漫射間亦深化了家具肌理。

1. Double glazed wood framed window invites ample natural light to enter.

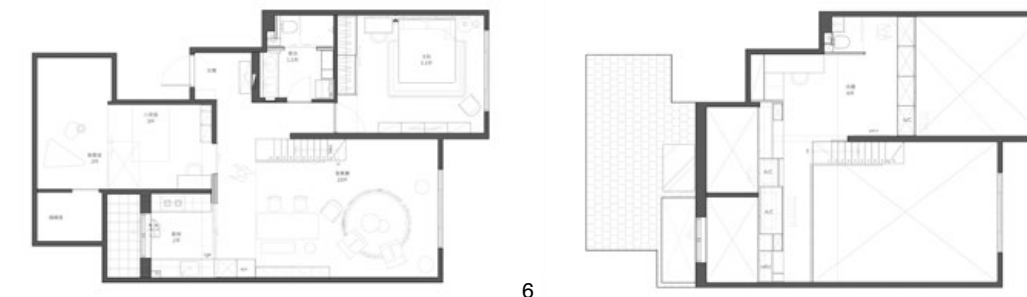


2. 開放式的餐廳與廚房，兩者間配有活動式拉門，可避免料理時油煙溢散問題。3. 玄關入內後的夾層下方空間，灰色樓梯結構彷彿自水泥粉光地板生長而來。4. 玄關立面以活動式的插梢與層板取代木作收納櫃。木質天花則創造一種歡迎和溫馨的氣象。5. 挑高的斜屋頂是本案特徵所在，天花結構之美再襯上壁面仿舊文化石，營造舒適氛圍。6. 一樓平面圖。7. 夾層平面圖。

2. Open style dining area joins with the kitchen, which is then easily divided by a sliding door. 3. Staircase is installed in a way as if it was grown from the site. 4. Fine woodwork encases the lobby space to reveal a cozy comfort for the family. 5. Slanting roof and its surface treatment. 6. The first floor plan. 7. The mezzanine level plan.

轉捩上二樓，設計以一道迤邐長廊作上下、內外空間中介，既成區域過渡，亦是坐臥相宜的閣樓隔障；同長廊綿延駢進的書牆則為動線導引，將人領至端底處寫字檯，讓從事書籍出版的屋主在此謐穆靜僻氛圍中伏案工作。

斲索這偌大居室，場域幕覆在雋永雅潔的斯堪地那維亞風格中，白磚素壁、木天花及水泥粉光地板鋪砌成皮層肌理，讓線條純淨、顏色澹美的家具量體和家飾有了自然襯底，尤其玄關入內後，視野迎來一道嶙峋而立山形牆，設計藉文化石拼出磚砌之感，即便色調素縹卻深蘊質地美。對此陳鴻文談到：「不算大的空間，設計用淺色調作為天地壁基礎色，讓感受更敞亮，一旁角窗導入時序漸變的光影則豐富家具在材質與輪廓上的細膩度。」而每每流眄瞬目這屋間，物件形色交融於瀟瀟日光中，讓生活即景霎時儼如一幀映摹磚牆的當代風情畫。採訪 劉芝君





8. 斜屋頂的結構輪廓搭配斜角窗，讓空間明亮之餘更洋溢閣樓意趣。9. 為了豐富白色空間層次，設計採樂土水泥、塑膠地磚、仿石材磚等灰色調創造質地漸變。10. 設計斟酌挑高而拉出夾層空間，以利更有層次的生活機能劃分。

8. Attic style with a slanting roof and a triangle window. 9. White color and material in close color tones give the space a tranquil comfort. 10. A mezzanine level provides flexible space for living.

The premises of this case is located in Haidian District of Beijing City. The owners of the home are a young couple with a young son. The master is a software engineer who usually works at home. He loves a simple and brisk style. The mistress is an editor of architecture books who longs to have a corner dedicated to allowing her to concentrate on her writing. They purchased a 35 "ping" (~116 square meter) home with a bare interior. For this family of three, the space is slightly small. The uncommon slanted ceiling design was an even greater challenge. HAO Design believed that construction of the ceiling, despite its difficulty, was actually its most beautiful area, and courageously proposed to preserve the ceiling. This action also served to preserve the space advantage of the ceiling height. To prevent the floor heating and ventilation systems obstructing the view of the structure, the design and engineering stages must be extremely accurate in order to prevent huge losses that may arise from the smallest discrepancy.

To expand the sense of space, Designer made use of simple and brisk white and natural wood colors to highlight the textures of the materials and the linear design of the furniture. Open up wooden-framed big windows to accompany multi-plane glass, providing ample natural sunlight and light diffusion. The open style common space and the sliding door designs of kitchen and children's room can flexibly stretch the space, prevent oil and smoke and, when fully opened up, improve the ventilation. Achieve energy efficiency by reducing artificial lighting and air conditioning needs.

The configuration of the interior and the application of furniture is concocted according to the activity time, frequency and body status of people. The upper floor above the mezzanine is the study. It is a quiet place for work and reading. It is a quiet place for rest, work and reading. The more spacious layer below is the socialization and games space with a higher frequency of activity. The line of sight is helpful for the parents to supervise their children. One corner of the living room is the children's room / games room. Children's attention is drawn on the triangular mountain shaped cushions and tents. The blackboard can train children's learning and imagination.

On the principle of not overdoing the interior decoration, as soon as one is inside the home, one can feel the beauty of the high ceiling structure. The white faux weathered stones stacked on the walls project a down-to-earth and leisurely atmosphere. To give the white space layers more variety, earth cement special coating, plastic floor tiles, grey accents such as faux stone materials and metal bricks are used, while wood textures improve a home's comfort. Space functionality is defined by the furniture and can change dynamically to make use of the space to the maximum extent possible. This open-ended, unfixed and flexible lifestyle not only represents the future of trend, but also reflects a core value of the modern family that HAO Design has pondered -- to give to every member a comfortable body feeling and encourage a free and deep sentimental exchange. Text by

Tsai Shu-t'ien (蔡舒滢)



11



13



12



14



15



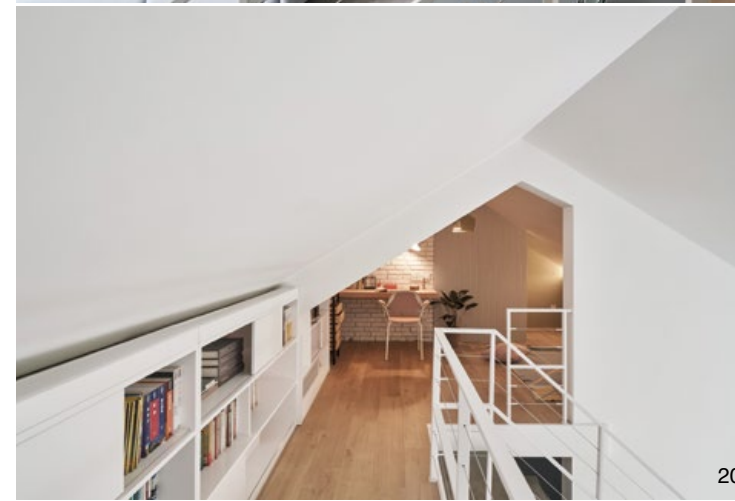
16



17

11. 夾層空間配有長廊書牆與書房，是歇息、工作、閱讀的安靜場域；下層是親子空間，穿透性視覺有利家長看顧幼童。12. 位於玄關轉進後的兒童房，推拉門設計可靈活伸縮空間。13. 素白的襯底背景，以藍色床背板與素雅床單營造優雅寧謐的韻味。14. 主臥房。主臥與兒童房這些機能較單一的空间皆配置在垂直尺度下降區塊。15. 兒童房，一側斜屋頂下的空間為遊戲室。16.17. 空間概念圖。

11. Mezzanine level is deployed as a reading space where a long book shelf is installed. The space beneath is a kid's playground. 12. Kid's playground. 13. Tranquil color and layout of furniture pieces in correct positions. 14. Master bedroom. 15. Kid's room and its adjacent playground. 16.17. Spatial diagram.



18. 活動式家具的配置正為斯堪地那維亞居家常見的設計元素。19. 二樓夾層以長廊作為上下空間的中介場域，並置入書牆創造閱讀休憩的機能。20. 長廊底端為女主人的工作區。21. 舒適隱蔽的工作桌一隅。
18. Movable furniture pieces. 19. Mezzanine level is a long gallery and bookshelf is encased on one side. 20. Working space for the wife. 21. Working table.

建材分析 Material Analysis

1. 本案從簡淨的斯堪地那維亞風格來營造，因此環境主色調多是淡雅柔和，再搭配局部木頭語彙來呈現。2. 位於公共區域的山形牆是入屋後最大的視覺塊面，設計利用仿舊文化石創造磚牆外觀，使其洋溢質地美。3. 天地壁間以白漆與木頭來呈現之餘，局部立面另以特殊水泥塗料、地板鋪覆仿水泥粉光 PVC 地板來創造水泥皮層的璞真韻味。4. 臥房區以耐磨木紋地板形塑溫馨自然的感度。

1. The space reveals a style in a strong Scandinavian air with subtle colors and natural materials. 2. Walls profiled by the pitched ceiling is clad in stone. 3. Materials used in this living space include white paint on the main wall and a wood floor and ceiling. 4. Floor is paved in PVC boards with a simulated rustic concrete texture. 5. Rustic textured floor in the bedroom.

溝通重點 Communication Note

1. 男主人為軟體工程師，平日在家工作，需求的空間風格類型希望以簡單清爽為基調。2. 女主人為建築類圖書編輯，因此規劃空間時希望有一處自我專屬的角落，以便專心寫作。3. 因山形建築輪廓，室內空間有著尺度差異極大的高低差，如何保持縱深優勢下同時也創造生活所需的合理機能，是本案最大挑戰。4. 因家中有位幼齡孩子，屋主希望空間能適度留白，讓孩子能遊戲奔跑。

1. Husband is a software designer and usually works at home; he demanded a space easily maintained and cozy. 2. Wife is an editor; she demanded a cozy and quiet corner. 3. The pitched roof profile created an advantage for spatial flexibility yet required a clever solution for precise layout. 4. A vacant space was retained as a playground for young children.