

The Living Lab, Traditional Clan Estate

大厝護龍

設計者」好室設計 / 陳鴻文

攝影者」Hey!Cheese

空間性質」三合院

坐落位置」台灣

主要材料」樂土、特殊水泥塗料、細竹、黃檜、義大利窯變磚、日式琉璃鋼瓦

面積」64 坪

設計時間」2017 年 2 月至 8 月

完工時間」2017 年 8 月至 2018 年 8 月

Designer」HAO Design / Ivan Chen

Photographers」Hey!Cheese

Category」three-sectioned compound

Location」Taiwan

Material」lotos cement, special cement coating, fine bamboo, yellow cypress, Italian kiln-fired bricks, Japanese glazed steel tile

Size」211m²

Design period」February – August 2017

Completion Date」August 2017 – August 2018



忠實記載著歷史歲月流轉的三合院，在發展快速的現代逐漸被人遺忘，好室設計秉持「修復」、「傳承」之信念，為老屋妝點上全新面貌。

屋齡超過一甲子的「大厝護龍」，結構形似我們一般常說的三合院，「大厝」是中間的正身，「護龍」則是兩旁垂直的屋宇。設計師陳鴻文表示，本案的業主就是他自己，幾年前因家庭成員的居住考量

而購入此處，進而著手開始改造。剛接手時，這座三合院屋體已幾近坍塌，磚瓦也大面積剝落，因此好室設計將主軸著重在「修復」，如何在更不改既有房間與格局下，讓記錄著歷史痕跡的老屋重獲新生，是團隊最為重視之事。



老屋活用的新典範

基地毗鄰屏東火車站，算是早期開發之處，有鑑於屏東人口外移與老化問題嚴重，大量老舊建築被閒置，但其實從建物形式可輕易挖掘時代改變的軌跡。就本案而言，這座三合院的建造模式並非一次完工，而是前屋主在有需要，或是手頭有餘裕時才進行擴建，使得這空間有一些有趣的配置，陳鴻文說，比起三合院，他覺得大厝護龍更像是一種反應當時生活情況的庶民住宅設計，在人與人之間的情感交流日益稀薄的今日，舊時居住環境反而更令人嚮往，因此他致力在老屋的結構限制下，設計出符合當代的生活方式。

設計師力圖藉由整修，將三合院還原成接近原先的模樣，並修正一些採光與視線穿透等問題。由於舊時住宅的開窗偏小，又緊鄰隔壁的建物，陳鴻文首先爬梳內外關係，他將房間連結後巷的牆體打開，導入充足的自然光源，再局部綴以細竹條，讓天井的視覺效果更有層次；考量到以往三合院格局的廁間均設置在室外，較不符合現代人的使用習慣，故將房間後半部規劃為廁所，也有益於配置管路、電線等，

Ivan Chen



好室設計 / 陳鴻文

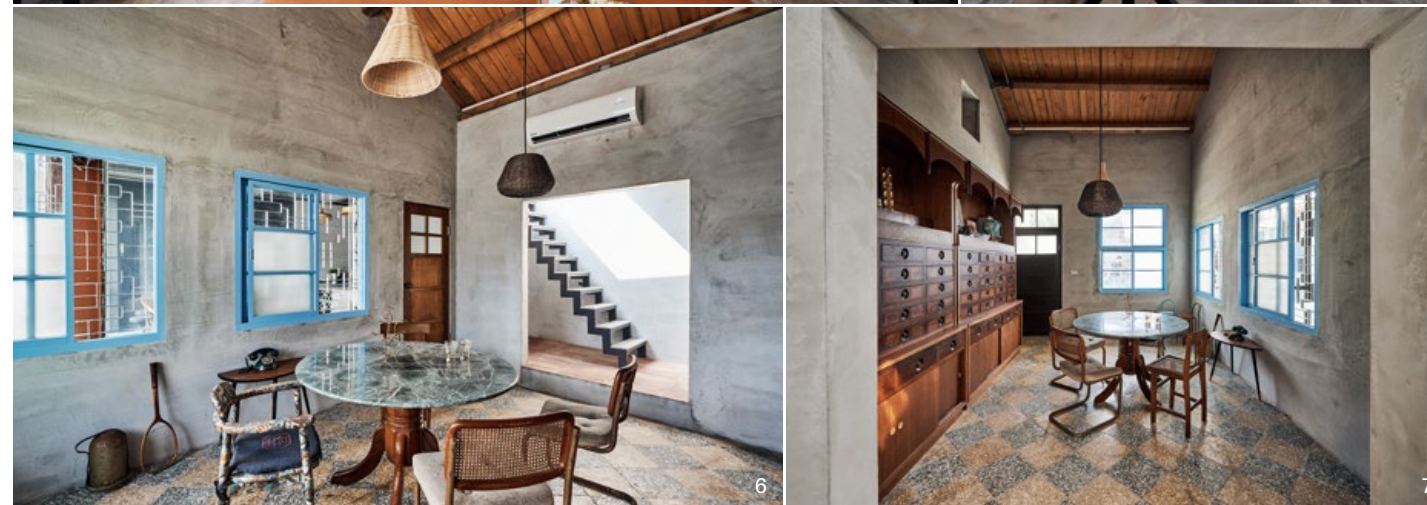
好室設計創立於2013年，提供住宅、商業、辦公空間規劃整合與工程管理，設計團隊期待生活應該是一種美學的表現，一種態度，希望可以將美好的生活體驗設計在空間中，讓人與空間多了對話與互動。好的空間不見得要豪華，在好室的設計中，你會看到空間與人有更好的互動方式。

HAO Design / Ivan Chen

HAO Design expect living to be in an aesthetic form which is also an attitude. We try to apply beautiful life experience to design and to optimize the interaction between users and spaces. A good space is not necessarily luxurious. Within our design, you can see the better life style and feel the warmth at the interiors. It is people that complete the whole story and experience the interiors-House. Hence, we oftentimes have interiors warm by keeping old objects and words.

1. 基地位在屏東火車站附近，除作為設計師自身的住宅空間使用外，亦利用多餘空間，舉行如共學等活動安排。2. 大厝護龍不像傳統三合院一體成形的建築模式，前屋主視經濟能力逐步加蓋的庶民作風讓空間配置更為有趣。

1. The site is located close to Pin-Tung Main Train Station; the building was renovated as a personal living space and lecture hall. 2. The building type was looser than a traditional courtyard house, but more flexible after being renovated.



3. 盡量維持老屋原有風景，在新舊元素間取得平衡，輔以長時間從各地蒐羅而來的古樸舊物，營造獨特氛圍。4. 團隊初訪基地時，僅剩結構尚存，屋瓦磚牆已大範圍剝落。為重現房屋原始之面貌，設計師秉持「修復」原則，賦予其全新靈魂。5. 天花採用厚實黃檜組裝而成，搭配上舊窗框引入的天光，別有一番韻味。6. 過道與開窗皆保留原始的方、圓、菱形造型，並嵌入復古花玻璃。7. 堪用的洗石子地坪透過打蠟拋磨等工序後加以保留，損毀部分則改以義大利窯變磚修補。

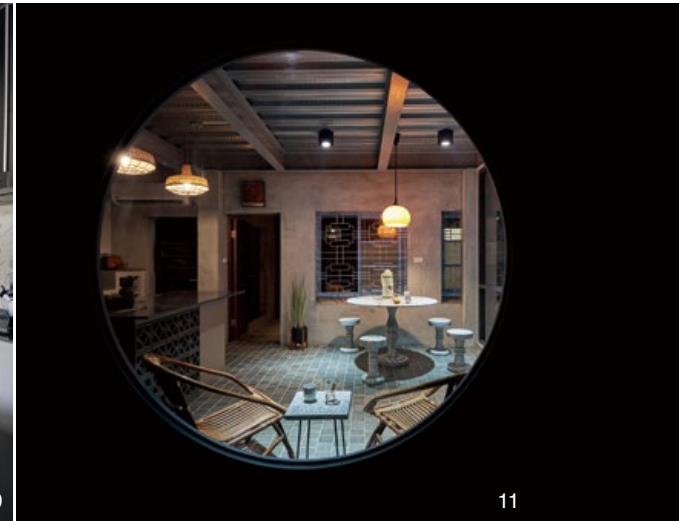
3. Many antique objects were inserted into the building. 4. Even though the building appeared to be abandoned for a while and only main structure remained intact Chen's team decided to repair it back to its almost original state. 5. Ceiling is covered with wood panels but invites natural light to enter from an opening. 6. Antique glass panel was used to match the existing windows of various shapes. 7. The terrazzo floor is mostly reserved but the scars were patched up by Italian tiles.

不會影響房屋結構與磨石子磁磚。針對牆體部分並未做過大變動，唯一有調整的是廚房空間，舊有廚房非常封閉，且設計團隊接手時牆體已崩塌，遂將廚房牆壁改為穿透玻璃，打破傳統廚灶的保守型態，讓視線可盡情延伸；陳鴻文進一步補充說道，他非常喜歡這個空間的原因之一，在於它擁有十分寬廣的「埕」，也就是三合院的前方廣場，是許多鄉下小孩嬉鬧玩耍的共同回憶，因此他善用玻璃材料，強化格局的連貫度，當大人在廚房忙碌時，也能兼顧在中庭玩耍的小孩狀況。

空間與情感的共鳴

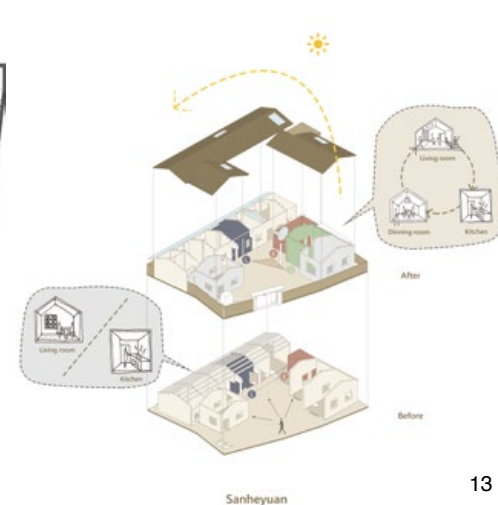
當談及材料挑選的想法，設計師提到，他盡量選擇跟這個老空間味道搭得起來的元素為主，如檜木、水泥等，也混合一些較為現代的質材，如玻璃、鋼結構等；盡量保留空間原有的洗石子地坪與壁面老花磚，仿照傳統工法重新打蠟拋磨，不堪用的部分改鋪以紋理自然的義大利窯變磚，至於牆面大多以塗料手法呈現，為空間注入質樸的手作溫度；家具軟裝則多為設計師的收藏，混搭了 40 至 80 年代的台式家具，如木頭圓凳、藤編捲簾，搭配幾款北歐風格家飾，透過老物件與新語彙的相容，擦出令人耳目一新的火花。此外，客廳的紅磚牆亦為空間亮點，刻意保留三個年代的磚色，隱喻新舊交接的傳承，此處易漏水的缺點，反而有利於牆角小植物生長，為客廳帶來更強韌的生命力。陳鴻文在大厝護龍一案的介紹影片中如是說：「三合院是一種團圓的概念，我希望創造家人間的回憶，如果可以幫家人蓋房子，這是我心目中理想的樣貌。」採訪

陳映霖



8. 開放過往封閉的廚房，作為連繫家人情感的重要場域。9.10. 以通透玻璃取代坍塌的舊牆體，帶來更加毫無阻隔的視野。11. 夜晚時分的靜謐畫面十分動人。12. 平面圖。13. 空間示意圖。14. 三合院設計概念。

10. Old kitchen is fixed and open to the public. 9.10. Glass panels replaces several sections of the broken walls. 11. A tranquil evening view. 12. Plan. 13. Diagram. 14. Courtyard design – concept drawing.



In this project, the home is more than 60 years old. Although it is a three-sectioned compound, it is not laid out in a traditional “embracing the courtyard” fashion. This reflects the fact that the previous home owners built it up section by section based on the clan’s economic means. It is close to Pingtung railway station. Because this part of town was developed earlier in history and the demographics have aged over time, the homes in this area include a mix of independent houses, makeshift temporary houses and three-sectioned compounds. From the rooftop, one can observe the passage of time through the style of buildings. When we first started the project, the roof was caving in like ruins. My task was to figure out how to “adapt” the home to a modern lifestyle without tearing down most of the walls, even though some of them were already crumbled. Firstly, we made full use of internal and external space by replacing the existing roof with iron gray matte Japanese tiles. Sturdy yellow cypress panels were installed in the ceiling along with accents of fine bamboo blocks, allowing the skylight to demonstrate a sense of leisure. Afterwards, we installed a door in the anterior wall adjoining the back alley and reserved the anterior space for a washroom. This facilitates more natural light in the home and minimizes the impact of pipe laying on the structure of the home. The kitchen wall is replaced by glass, marking a departure from traditional enclosed kitchens, and extends the line of sight to both the living room and the courtyard. All the windows of the hallway retain their original square,



15. 客廳的紅磚牆端景清晰可見年代的印記，角落小植栽強化了空間的生命力。16. 設計師將房間後方巷弄的牆體打開，讓自然光線得以投射入內，細竹條的運用增添了天井層次。17. 陳鴻文希望藉由修復老屋，並讓下一代了解過往台灣生活模式，使舊建物的美好得以延續。18. 為符合現代人居住習慣，將臥房後半部規劃為浴廁空間，飾以具現代線條的設備。19. 臥室一隅。20. 遊戲空間一景。

15. Brick sections witnessed the past and easily brings back vivid old memories. 16. A solid wall was opened up to bring in natural light. 17. Chen hopes his efforts will allow one page of old memory to be witnessed by a younger generation. 18. Modern sanitary facilities were introduced. 19. Bedroom view. 20. Playroom



round and diamond shapes. With the installation of the vintage stained glass, which is collected over a period of two years, the Traditional Clan Estate is rejuvenated as a modern work of art.

Although impractical, the iron windows evoke a sense of nostalgia. We cut up the iron windows and refashioned it as railings for the balcony on the second floor, retaining the beauty of the vintage iron bars. The original stone wash floor and the old tiles on the wall are re-waxed and polished in imitation of traditional methods of construction. Even when it comes to the height of the floor and the dimensions of the doors, we abide by the principle of "recover, restore and add new functionality." The furniture and decorations that we brought in are a mix of 1940s to 1980s local Taiwanese designs and European designs. They include rare vintage items that I collected from all over

the world over a long period of time, including round wooden stools, Chinese medicine cabinets, rattan curtains, Indian lamps and German microscopes. In addition, I deliberately retained old bricks in the living room to form a mélange of red bricks from three different eras. Finally, accents of cypress, cement and terrazzo on the walls, ceilings and floors evoke a down-to-earth feeling.

Interior design triggers emotions and memories in residents and guests. We accepted this challenge to rebuild a traditional three-sectioned compound for a modern urban lifestyle. We also planted a tree sapling beside the children's slide of the tree house, representing the hope of seeing the tree grow ever taller as the clan's traditions are handed down generation to generation.

建材分析 Material Analysis

1. 燈具挑選以五、六零年代的老燈為主，另點綴多盞以傳統編織技法結合現代造型的藤編燈，與空間主軸相契合。2. 以能與空間相融合的建材為主，再佐以設計師收藏的眾多老件家飾，疊砌出更深層的韻致。
1. Lighting fixtures are objects mostly fabricated in the 1950-1960s, and they are mingled with some new fashionable rattan lighting. 2. The renovation work adopts material that fits with existing building type but collages with many furnishing objects from antique stores.

溝通重點 Communication Note

1. 設計師以「修復再造」的原則改建殘破不堪的舊三合院，盡可能保留既有元素，再藉由微調修正不佳的採光、視線等問題。2. 在老屋的結構限制下，以及避免破壞內部元件，在重設管線電路時需格外小心。
1. The design restored an aging courtyard house by maintaining its original elements while still offering more comfortable lighting. 2. Renovation of the utility systems could not damage the existing structures.