

Rachel's Burger

設計者」 如恩設計研究室 / 郭錫恩 胡如珊
參與者」 Tony Schonhardt, Laurent Tek, Zhao Lei, Elisa Ascari, Yifei Lu
攝影者」 Dirk Weiblen
空間性質」 餐廳
坐落位置」 中國上海
主要材料」 手繪水泥磚、玻璃罩吊燈、客製家具、金屬、造型玻璃、清玻璃、胡桃木
面積」 28 坪
完工時間」 2015 年初

Designer」 Neri&Hu Design and Research Office / Lyndon Neri, Rossana Hu
Participants」 Lyndon Neri & Rossana Hu (principals in charge), Tony Schonhardt (senior associate), Laurent Tek (senior associate), Zhao Lei (senior architectural designer), Elisa Ascari (architectural designer), Yifei Lu (architectural designer)
Photographer」 Dirk Weiblen
Category」 Restaurant
Location」 Shanghai, China
Materials」 custom steel and glass doors (steel, clear glass, textured glass, mirror), Hand painted concrete tiles, Custom furniture by Neri and Hu (Steel, walnut, concrete tiles), Well glass pendent fittings
Size」 93m²
Completion period」 2015

郭錫恩和胡如珊

郭錫恩和胡如珊共同創立了如恩設計研究室 (Neri&Hu)，一家立足於中國上海，在英國倫敦設有分辦公室的多元化建築設計公司。二位還共同創立了設計共和 (Design Republic)。2015 年，郭錫恩和胡如珊被巴黎家居裝飾博覽會評選為亞洲年度設計師，2014 年，被英國牆紙雜誌《Wallpaper*》評選為年度設計師。2013 年，入選美國《室內設計》名人堂。如恩設計研究室榮獲 2011 年 INSIDE 設計節大獎，2010 年度英國建築評論雜誌 AR 新銳建築獎。除了屢獲殊榮的建築與室內設計之外，郭錫恩與胡如珊共同為包括 BD Barcelona Design, Classicon, Gandia Blasco, JIA, LEMA, Meritalia, MOOOI, Parachilna, Stellar Works 以及如恩製作 (neri&hu) 等眾多品牌進行產品設計。

Lyndon Neri and Rossana Hu

Lyndon Neri and Rossana Hu are the Founding Partners of Neri&Hu Design and Research Office, an inter-disciplinary international architectural design practice based in Shanghai, China, with an additional office in London, UK. They are also Founders of Design Republic. Neri&Hu are named Maison&Objet Asia Designers of The Year 2015 and Wallpaper* Designer of The Year 2014. In 2013, they were inducted into the U.S. Interior Design Hall of Fame. Their practice was the 2011 INSIDE Festival Overall Winner, won AR Awards for Emerging Architecture in 2010 by Architectural Review. Besides award-winning architecture and interiors, Neri&Hu have designed products for brands including BD Barcelona Design, Classicon, Gandia Blasco, JIA, LEMA, Meritalia, MOOOI, Parachilna, Stellar Works, neri&hu, among many others.

Lyndon Neri and Rossana Hu



回想 60 年前戰後的美國，普普藝術風開始鋪天蓋地蔓延至大街小巷，家家戶戶必備的收音機裡傳來貓王的低沉歌聲，略帶雜訊卻充滿無比活力、剛上市不久的電視裡正轉播著瑪麗蓮夢露的明眸倩影；這些五〇年代的美式群像，在如恩設計的巧思運用下，來到飛行距離 15 個小時中國上海市區，濃縮轉化為一間以 20 世紀美國街邊連鎖速食店為靈感而打造的“Rachel's Burger”。這間漢堡店掙脫了尋常建築的隔間邏輯與規則，運用具有親近感的開放設計，將內部與室外周邊環境融為一體，減少了水泥牆面賦予人的冰冷距離感，也替古蹟林立的武康路注入一絲清新活力。

在灰色系的餐廳外觀上，幾乎不見實體牆面，而是以簡單利落的柱體構築出建築雛形；代替厚實牆面的則是由通透的清玻璃、紋理玻璃與鏡面材料打造而成的摺疊門片，若自街道另一側望去，餐廳屋頂彷彿懸浮在半空中一般呈現出獨特的輕盈結構感，如此一來不僅降低了空間分界、引入室外的美好陽光，也還予空間一幅「全景」般的街景視野，賦予小小不到 30 坪的用餐空間一般市區店面少見的寬闊舒適。

進到餐廳內部，鋪覆在地面以及吧檯櫃體上的彩繪水泥磚，整齊的排列出重複的幾何圖形，隨著顧客行走時視覺角度的不同，呈現出 3D 圖像一般的動態效果。頭頂上的玻璃罩燈點綴出淡淡的復古氣息，寬敞不顯擁擠的座位區最多可以容納約 40 位客人，長桌與吧檯旁的圓椅亦能隨用餐人數組合之不同，靈活地調整角度、排列運用；種種設計皆替這間瀟灑美式風情的新形態漢堡店，添增了與眾不同的絕妙魅力。 編譯」 劉子瑄

Drawing inspiration from the American drive up burger joints of the 1950's, the restaurant was envisioned as a porous space where the boundaries between inside and outside are blurred.

The exterior walls can be fully opened to further extend the perceived and actual boundaries of the restaurant. When fully closed, however, a clever combination of clear and textured glass along with mirror are used to great effect to visually extend the boundaries of the space while bringing light, views and streetscape deep into the interior.

The dematerialization of the walls is further emphasized by the dominance of the horizontal planes. The roof structure seemingly floats above the space while the floor rises and falls to support the custom eating and seating surfaces, integrating communal tables with pivoting benches accommodating for individual or group dining flexibility. Text by Neri&Hu Design and Research Office.

1 Rachel's Burger 獨特的外觀結構，讓它成為武康路上新興的注目焦點。2. 帶有復古氣息的玻璃罩吊燈，點綴出空間中的暖光與愜意。

1. Rachel's Burger has a distinguished outlook and has set a landmark signature in the main arterial road 2. Old fashioned glass covered lighting fixtures warm the space



3. 設計師運用玻璃的通透特性，打造出數十片摺疊門作為店面外觀。4.5. 摺疊門以清玻璃與具有紋理的結構玻璃打造而成，供業主隨天氣情況自由決定開放範圍。6. 明亮的日光與悠閒的武康街景穿越了玻璃門面、引入室內空間。7. 摺疊門以金屬鑲形，在開關時呈現出立體的曲折結構。

3. Glass folding doors set a total transparent facade 4.5. Folding doors provide flexibility to give access between inside and outside 6. Natural light permeates inside to give a tranquil impression 7. Folded door exhibits a special sculpturing profile

建材分析 Material Analysis

1. 利用玻璃、鏡面等素材，打造可以調整開放範圍折疊面設計，營造出具有寬敞舒適感的店面。2. 室內皆使用客製家具，展露出獨有的現代設計感。3. 運用鋪覆於地面與櫃檯表面的幾何圖形水泥磚，在簡約的空間中增加豐富的視覺效果。4. 利用長桌、圓椅乃至沿著斜角分佈的靠窗座位區，擺設出靈活的座位分區邏輯。5. 玻璃門面與透光的長形天窗，替室內帶來豐沛採光與外景。

1. Glass and mirror glass were used extensively to give the space an energetic delight yet it maintains coziness by using carefully selected furnishing elements 2. Custom designed furnishing pieces give a sense of modern elegance 3. Geometrical floor pattern increases the impression of historical layers and offers a vivid energy 4. Long tables and round chairs set a diagonal layout to provide a more energetic rhythm into the space 5. Glass doors and skylight invites natural light to permeate fully into the space

溝通重點 Communication Note

本案位於上海市內的武康路，武康路上以眾多歷史建築與林立的美食餐廳聞名，故如何在眾家爭鳴的用餐選擇中跳脫出自己的特色，為設計團隊的一大課題。設計師以五〇年代美國街邊的餐飲店為靈感，透過靈活的結構與裝飾，打造出具有輕鬆氛圍與青春趣味的用餐空間。

The project is situated in an historical artery in Shanghai; the road is packed with famous gourmet restaurants and historical landmarks. To be unique in contrast with the other famous diners, this restaurant/bar was shaped to pretty much resemble an old-fashioned American dinner of the 1950s.

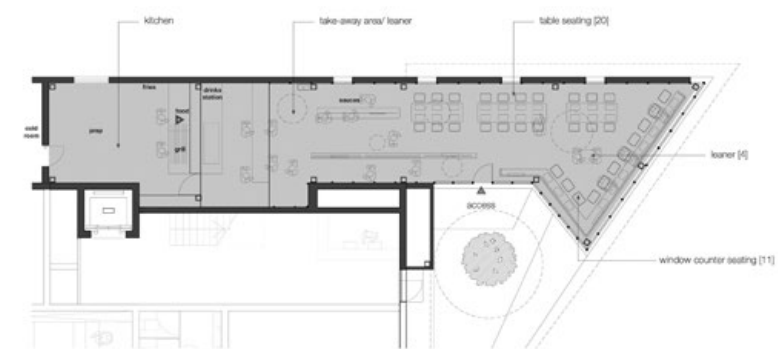


8



9

8. 餐廳上方保留了一條長形天窗，透進清晰明亮的外景與陽光。9. 吧檯旁的圓椅可以隨用餐人數自在調整角度，讓座位配置更添便利性。10. 平面圖。
8. A long slanting skylight invites natural light to warm up the interior 9. Round chair is adjustable to give convenience 10. Plan



10