

# Deep World 深境

設計者 | 近境制作 / 唐忠漢 曾勇傑  
攝影者 | 鍾崴至  
空間性質 | 住宅空間  
坐落位置 | 中國浙江  
主要材料 | 石材、木作、布藝、鐵件  
面積 | 150 坪  
設計時間 | 2017 年 7 月至 10 月  
施工日期 | 2018 年 1 月至 7 月

Designer | Design Apartment / Tang, Chung-Han, Tseng, Yung-Chieh  
Photographer | Chung, Wei-Chih  
Category | Residence  
Location | China  
Materials | building stone, woodwork, fabric, metal member  
Size | 496m<sup>2</sup>  
Design period | July to October 2017  
Construction period | January to July 2018



光影、綠意流瀉於居所中，建築乘載著人與人相處的點滴過程，開放流暢的內部規劃，交織出最適宜的生活體驗。

基地位在中國浙江省的義烏市，距離杭州大約一個半小時車程，景觀秀麗，也是發展急速繁華的城市。本案特殊之處在於其為一疊拼戶型的全新集合式住宅，所謂疊拼戶型是由多層的複式住宅上下疊加在一起組合而成，不同於平層戶型的空間，更能滿足居住者的機能需求，以及將對生活的美好想像加以實踐，既能親近自然綠意、維持人際交流互動，卻又不失個人隱私性。

## 空間表情之呈現

中國近年來疊拼式格局的房型比例漸增，設計師唐忠漢表示，本案為下疊戶型，擁有寬敞之地下室空間，能打造出完整的社交領域，將家人的作息加以串聯，讓對話成為日常生活模式中的一環，因此他將地下室的長形中島餐桌視為本案的主軸，摒棄厚重牆體，改以開放流暢的動線圍塑出活動範圍，中島身為讓居所更具互動溫度的重要媒介，設計師不僅針對情感面進行著墨，在設計上更要將完善的使用機能納入考量，因此內含洗滌、收納與展示功能，可支援如吧檯小酌或正式用餐的情境設定，滿足居家酬酢需求，擴展生活容器各種不受限的可能性，亦可藉由中島的擺設，強化空間張力。至於在各樓層的配置上，一樓為中廚餐廳與客廳，利用玻璃隔間輕量化了空間的布局，讓全室更為通透，放大視覺跟體感；二樓重點則在於打開原本陰暗狹長的廊道，讓光線可穿過半開放的書房及主臥更衣室，藉此串聯建築前後上下的關係。

室內的色彩布局以淺色天然石材為主，企圖塑造輕盈質感，讓生活場域更為自然，而淺色調性也有助於讓身處其中的人徹底放鬆，局部點綴上木質元素，帶來溫潤的視覺效果。唐忠漢進一步說明，為維持大坪數基地的協調，除了臥室外，其餘地坪以淺灰色石材呈現，再根據各場域的調性主軸疊堆不同表情的材料，透過細節處的變化突顯層次特色；當談及如何讓空間擁有石材的精緻度卻不會予人冰冷之感，設計師表示他挑選的石材面向多元，透過紋理的差異豐富變化度，再增添布藝、木作等物件來解決問題，例如牆面大面積的壁布呈現，柔化較為剛硬的線條，而木皮則可平衡各材料間的配比，另外，藉由戶外天井引入豐沛的自然光線，使滿室充盈流動亮度，也有效提升內部素雅氣息。

## Tang Chung-Han, Tseng Yung-Chieh



近境制作 / 唐忠漢 曾勇傑  
設計源自於對生活的熱情、活力、單純，在系列作品中，透露著強烈的地域色彩，透過完整的室內建築概念，以材質乘載情緒，以光影紀錄時間。生於亞洲，源自東方，以最真誠的人文精神，訴說空間故事。得獎紀錄：2018：中國室內設計十大年度人物、台灣室內設計大獎、陳設中國晶麒麟獎、德國 iF 傳達設計獎  
2017：德國紅點傳達設計獎、日本優良設計獎、英國國際地產大獎—亞太區 (Asia Pacific Property Awards)、香港亞洲建築 + 設計大獎 (A&D Trophy Awards)、香港 APIDA 亞太區室內設計大獎、台灣室內設計大獎、義大利 A' Design Award & Competition、居然杯 CIDA 中國室內設計大獎、中國北斗名師 最佳物質領域設計獎

Design Apartment / Tang, Chung-Han, Tseng, Yung-Chieh  
Design starts from passion and energy. We are a team playing fun with local color and texture; we love to use interior design and architecture to tell stories of the past and the spirit of humanity.

Awards:  
2018  
Top Ten Interior Designer · TID Award · Art Display China Crystal Kylin Awards · iF Award  
2017  
Red Dot Award · Japan Good Design Award · Asia Pacific Property Awards · A&D Trophy Awards · APIDA Award · TID Award · A' Design Award & Competition · CIDA Chinese Interior Design Award · China Design Beidu Master

1. 本案為疊拼戶型，一樓配置中餐廳與客廳，通透隔間讓視覺不被阻斷。  
1. Multiple layering house enjoys the advantages of spatial fluidity.

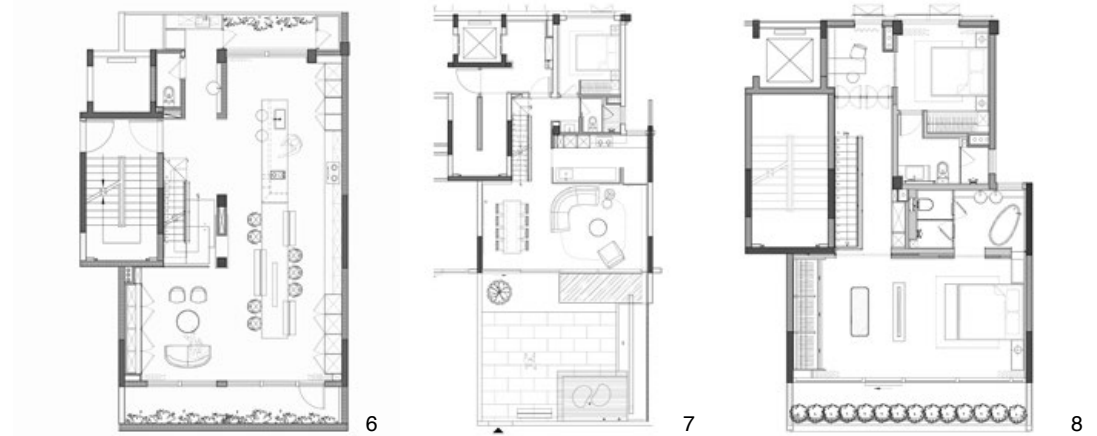


### 細節韻致之形塑

至於二樓私領域部分，設計師希望能放大臥室的延展度，帶來寬敞舒適的感受，他利用大面積玻璃開窗搭上可透光的紗網簾，引景入室，打破視覺阻礙，形塑出通透氛圍；中央則置入雕塑性元素，達到暗示場域區隔的作用，靠床側的圖騰面為展示型態，藍色暈染的朦朧筆觸捎來一股藝術氣息，背面則為滿足更衣室機能的鏡面，此物件亦成為空間亮點。本案在燈光計劃方面將點、線、面視為基礎，透過裝飾性吊燈跟立燈來強化空間個性；而軟件方面為符合東方精神的基調，不過於奔放，卻顯內斂沉穩，設計師將建築與人文底蘊相容，讓居住者優游其中，享受美好時刻。採訪 | 陳映棠

2. 室內以淺色灰階作為主調，保有現代簡潔的質感。3. 為維持室內外的連結性，唐忠漢將地坪局部往雨遮範圍延伸；透明穿透區域則身負地下室採光機能的重任。4. 設計師將廚房牆面轉換為展示型的玻璃櫥窗意象，釋放空間感受。5. 地下層作為親朋好友相聚交流的場所，寬敞體感為必須，故以開放流暢之動線進行規劃。6. 地下層平面圖。7. 一樓平面圖。8. 二樓平面圖。

2. Gray color sets the main color tone of the interior. 3. The expanding length of canopy allows indoor activity to penetrate into the balcony. 4. Glass cabinet shelf replaces a solid wall to increase spatial transparency. 5. The lowest level space offers space for social grouping. 6. Basement plan. 7. The first floor plan. 8. The second floor plan.





9



10



11

The project is situated in Yiwu, about one and a half hour drive from the major city Hanchau. The house is a double layer style unit linked by half level staircases. It enjoys good ventilation, lighting comfort, and the most desired condition in terms of public space. It is also easy to maintain privacy for individual life.

### Expression of Space

The double layer house has been a desirable design in the recent real-estate market as it provides the advantages of linking daily life on different levels according its the frequency of use and occasion. Here, the lowest level is an inhabitable basement designated as a leisure space. In the basement a large central table is a dominating element and coordinates the surrounding activity, ranging from public social event to family member's daily chats. The table is equipped with storage and a washing basin and easily converted into a dining table, or a large table accepting catered food display. Surrounding partitions are mostly transparent. The second floor invites natural light to permeate into a closet hidden inside master bedroom and reading room.

Interior textures shape the space in a vivid spirit. The color is mostly light gray in stone joined by wood decoration. Mr. Tang, the designer, states that even though the floor is mostly covered by marble, the ambience of the space is still intimate and warm because the texture and color of the marble was carefully selected This is further enhanced the surrounding intimacy by proper fabrics and wood. Ample natural light introduced by the courtyard infuses energy to the space and warms the air in the space in a tranquil comfort.

### Elegant details

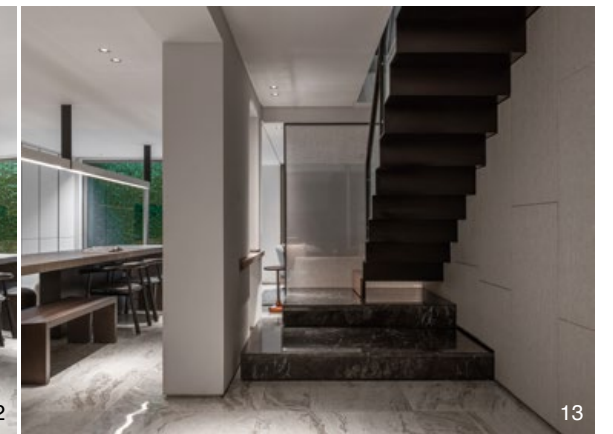
The second floor is designated as the private space. The master bedroom enjoys an amplexity in size but retains an intimate comfort. In the central position, there stands an art piece which clearly defines the space in two zones; one side is a bedding zone the other is dominated by a closet and other functional quarters. Tinted blue infuses a fresh spirit while a large dressing mirror proclaims the nature of the space. The furnishings invite a total embrace of the day's common life which is intimately dangled by the dweller's memory.

9. 長型中島被視為空間主軸，串聯起居住者的生活，滿足居家社交需求。10. 整體地坪選用淺灰色石材，為空間帶來一致性；由於採光來自庭院的天井，遂利用綠色植栽裝飾底部端景。11. 可提供小酌、正式用餐等情境，使用上更具彈性。12. 本案藉由吊燈、立燈等燈具選擇，強化空間個性。13. 有鑑於地下室有層高以及樑柱的限制，設計師在樓梯部分結合鋼結構和石材平台，進行動線轉化，達到舒適的居家體驗。

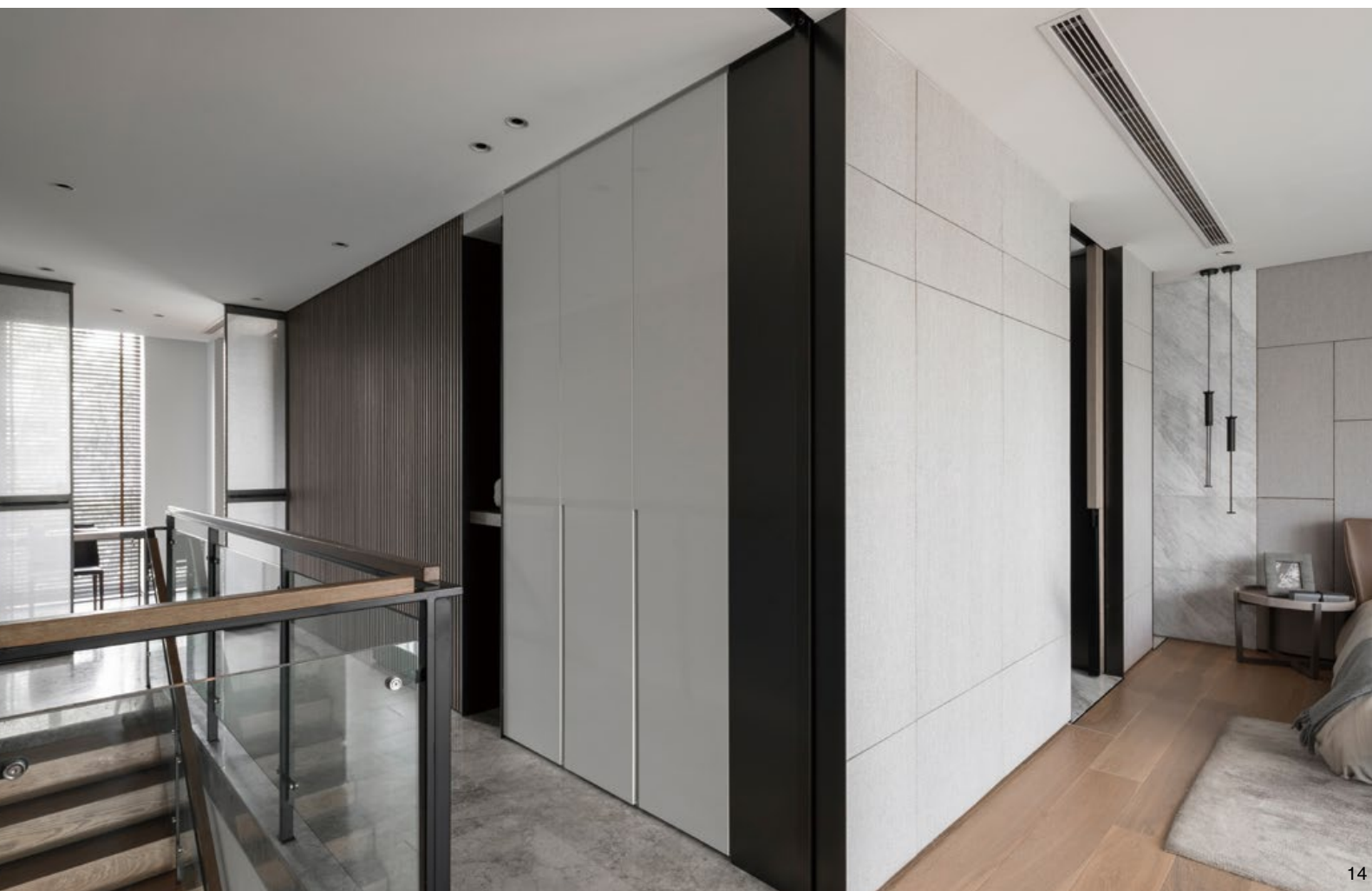
9. Long island table groups living and social activity. 10. Gray color marble floor integrates with the interior furnishings and accepts natural light in a rich show. 11. Large table is used for various events from the formal to casual gatherings. 12. Lighting fixtures enliven the space. 13. To reduce unpleasantness in the basement, the design adds rich material to the space.



12



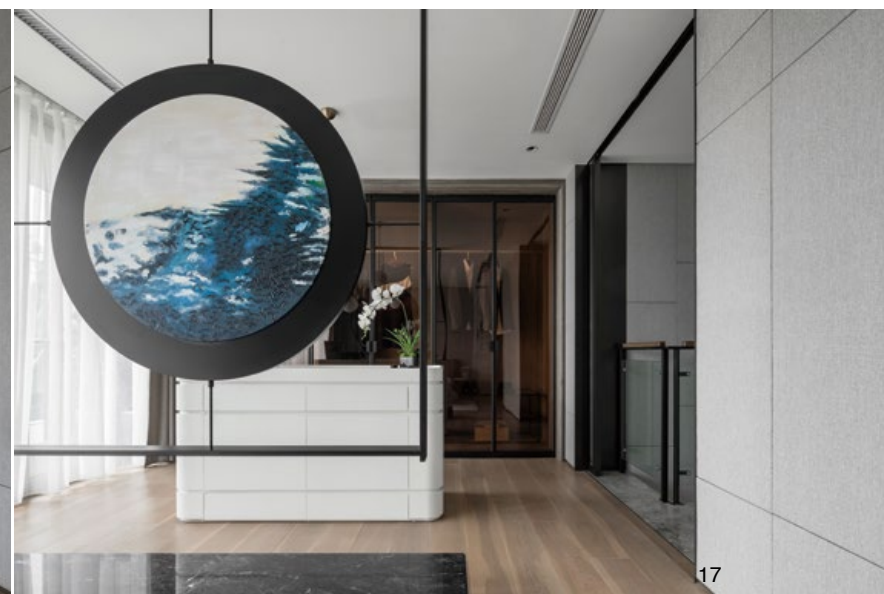
13



14



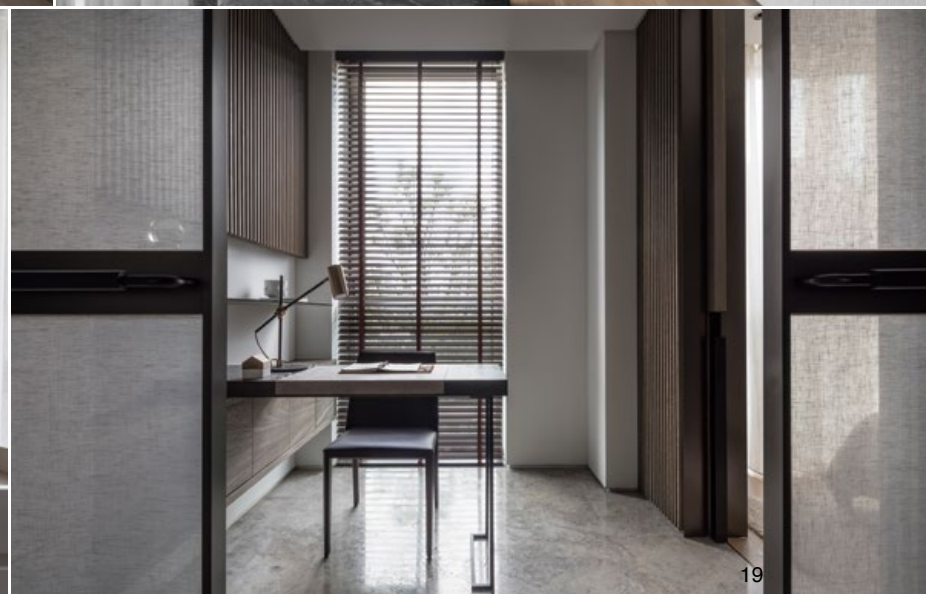
16



17



18



19



15

14. 二樓廊道原先較為陰暗，如何引入充足光線為團隊需克服的難題。15. 為柔化大量石材所帶來的冰冷感受，故在牆面上大面積鋪設壁布，以及局部綴上木作，增加層次。16. 主臥中央的大型雕塑性元素儼然成為視覺重點，亦增添些許藝術氣息。17. 雕塑性物件不僅可作為裝飾屏風，也可暗喻場域的分界。18. 背面為滿足更衣梳化功能的鏡面。19. 沉靜書房一隅。未有過多繁複裝飾，營造內斂氛圍。  
 14. Inviting natural light to the second floor internal gallery is an important effort of the design. 15. Stone is joined by fabric and woodwork to reveal a more gentle ambience. 16. Big sculpture work in the master bedroom provides a central visual focus. 17. Art work in the master bedroom gives the space a definite border. 18. Dressing spaces reflective panel. 19. Reading room in a tranquil air.

#### 建材分析 Material Analysis

- 大量運用各式紋理不同的石材，配上布藝、木質等元素，藉由異材質堆疊出多變表情。
  - 自然塗裝效果的雞翅木皮為空間注入溫暖跟俐落的感受。
1. Materials in different textures and colors join to give vivid spirit to the space. 2. Chicken-wing wood injects a soft texture into the space.

#### 溝通重點 Communication Note

- 為滿足居住者對生活的想像與社交需求，故將地下層打造成完整的社交場所，藉此保有上層的私人領域的獨立性。
  - 摒棄厚重牆體，將動線開放，再搭配通透建材與綠意，讓室內更為輕盈。
  - 中島被視為本案的設計主軸，串聯起人際間交流。
  - 全屋以隱藏式拉門讓私領域空間保有隱密的效果。
1. Basement is fully deployed as a social venue. 2. Opaque material and plants are used to divide one space from the others. 3. A central island table is a catalyst to stimulate activities in the basement. 4. Secret doors provide easy access from the public to private zone.