

TCal Dental

南加州牙醫診所

設計者 | 開物設計 / 楊竣淞 羅尤呈
參與者 | 薛瑋婷
攝影者 | 圖起乘李國民攝影事務所
空間性質 | 牙醫診所
坐落位置 | 臺灣
主要材料 | 大理石、黑鐵、茶鏡、灰玻璃、鑽泥板、花磚
面積 | 40 坪
設計時間 | 2015 年 4 月至 6 月
完工日期 | 2015 年 6 月至 2016 年 1 月

Designers | Ahead Concept Design / Chun-Sung Yang, Yu-Chen Lo
Participant | Wei-Ting Hsueh
Photographer | Figure x Lee Kuo-Min Studio
Category | Dental Clinic
Location | Taiwan
Materials | marble, black iron, colored mirror, colored glass, cement board, tile
Size | 132m²
Design period | April - June 2015
Completion period | June 2015 - January 2016



縱使城市氣象陸離斑駁，
但設計面卻取其「不正」韻致，
在鄙陋中逐一爬梳出某種頹放和疏狂的美感

櫛矗高廈，跋扈蔽空，這片新世紀山藪正猖獗且榛榛蕪蕪地壯大，地域上滿是混合水泥、鋼鐵和塑膠的植披。駐留於此都會叢林街衢、屋齡 40 年餘老宅，量體霽附了左右所含紛濁和機械文明的氣味，但見舊樓屹立枯澀柏油路旁，在百無聊賴日常間，迎顧車潮一重又一重澎湃疾往。由楊竣淞與開物設計團隊所操刀的牙醫診所，四面環境滯陷在色調渾沌、元素雜遝周景內，縱使城市氣象陸離斑駁，但設計面卻取其「不正」韻致，在鄙陋中逐一爬梳出某種頹放和疏狂的美感

景觀切片 渙然成色

當舊裝潢全數剷除成空後，逾 40 老建築本存歪樑、斜牆等非垂直水平的結構亦隨之曝露，雖難掩其率性潦草，卻有幾分大巧若拙的寫意和任情美感，猶相應戶牖臨街那一帶所具萬象紛攘味道。對此楊竣淞解釋：「就現代工法來看，這種帶點『隨意感』的構造十分有趣，好像也在回覆大環境略顯繁亂的景觀。」於是設計方向便以寫實經緯成座標，由裡至外摘擷滄素環境情態的切片，藉其組織肌理，勾摹風格。

制定了失序、錯繆紛糅空間主題之餘，業主對診所實有精緻性要求。為使場域塗暈一股瑰姿譎起的意興但不落庸俗，設計面擯除了廉價和粗獷的材質語彙，再將花色穠豔大理石、紋理綿稠之木皮、反射性鏡面不鏽鋼等參差垛砌，藉如此重筆濃繪，讓室內驟然滿蘊高強度視覺效果。

瞻觀接待處，皮層姣豔大理石迸散成色，與沉邃的木質背景正好一肆一斂。包括牆面以垂直向石材飾板做局部點綴，讓素色襯底再挺出一襲縵美風儀；至於中央沙發區，則有大塊面石材拼磚鑲嵌於人字紋木地板間，異材質撞色下，乍看則大理石儼若一張平鋪、厚實的大毯。事實上，大理石從立壁的輻散態樣直至地板大塊材料，視覺上有邊陲向中心收攏的效果，能對空間起一個收縮的穩定感，再輔以幾道鏡面不鏽鋼材料，讓氣象靚麗懿鑠倍增卻不流於重濁。

Chun-Sung Yang, Yu-Chen Lo



開物設計 / 楊竣淞 羅尤呈
開物設計追求形與質之間最微妙的共鳴。有靈魂的空間不僅存於視覺，更因其性格而傳遞出耐人尋味的魅力。對於設計的追尋不僅是風格化的美，亦關切有思想、有回應的觸動。
重要得獎紀錄：2010 臺灣室內設計大獎 複層住宅類、2010 亞太室內設計大獎 複層住宅類銀獎、2013 臺灣室內設計協會新銳設計師金獎、2013 臺灣室內設計大獎 商業空間類、2013 臺灣室內設計大獎 工作空間類、2014 亞洲設計獎 商業空間類銅獎、2015 德國 iF 設計獎

Ahead Concept Design / Chun-Sung Yang, Yu-Chen Lo
Ahead Concept Design pursues the subtle resonance between form and quality.
The meaning of a space only exists in visual stimulation. The intriguing charms reside in its character. The pursuit of design is not only limited to an aesthetic view it is also connected to ideology and emotional response.
Important Award record
2010 Taiwan Interior Design Award for multi-storey residential category · 2010 Asia Pacific Interior Design Awards for Multi - Storey Residential Silver medal · 2013 Taiwan Interior Design Association cutting-edge designer Gold medal · 2013 Taiwan Interior Design Awards Commercial Space category · 2013 Taiwan Interior Design Awards Workspace category · 2014 Asia Design Award for Commercial Space category Bronze medal · 2015 Germany iF design award

1. 瑰麗大理石的 material 效果。
1. Magnificent marble material effect.



2



3



4



5

劇場情勢 顛覆典型

氛圍營造上，屋頂幾盞投射燈替天花鑄出一束束光帶，搭配下方無方向性交織、高低錯綜的直線吊燈以及鏡面不鏽鋼包樑，舉目賞翫，有疊光、複景、游影之妙，柔黃燈色與劇場感照明，讓爵士俱樂部韻味繾綣滿室。對此楊竣松解釋：「低淺光線照明裡，鏡面不鏽鋼的反射變得柔和，而室內最閃耀的發光體就是線形燈具裡一顆顆燈泡，看起來就像仰觀星空。」微光熒熒嫋嫋拂照質地，亮度不過份煒燁，在溫醇燈色烘染下顯出星燭熠熠的爛漫。

豔冶材料、劇場式燈光顛覆普遍診所的科技感和勻淨氣息，包括格局擊劃，開物設計也無意從「典型」來詮釋；由於醫療空間除看診室，尚有掛號櫃檯、候診大廳等機能分區，因此設計從固有平面關係來擊破框架，從中衍生嶄新行為模式。出電梯口抵達廊道，順循鏡牆而行可抵達接待區，瀏覽場域，傳統上密集單調的成排座椅不再，僅見沙發、單椅鬆弛打散於平面，或橫據中央、或靜棲隅落，藉著家具所象徵、定義、延續身體空間的範疇，讓陌路相逢者雖同室共處，但保持距離下依舊享有極佳隱私。

類住宅型態之餘，擲入格局面的第二個質變是消隱接待櫃檯。普遍上，櫃檯量體載負了扼守進出、吐納人流和接待應事，唯本案將之潛形，歸納在一道反射鏡牆後的房間，對此楊竣松解釋：「這道牆本身向內 30 度轉折，立面材料用黑體和反射玻璃創造遮擋效果，人的進出，玻璃後方的工作人員能清晰觀察，但外側實際上很難看到櫃檯。」刻意藏起櫃檯，人下意識追隨動線而至風格蘊藉的接待區，迨看診民眾確實入座後，工作人員才步出櫃檯主動詢問，猶如摹擬“fine dining”餐廳模式，藉此專人服務情境達到業主所冀精緻別韻。

舊事新味 醞然蕩馳

將今昔歲月容顏一齊澆鑄診所場域，是本案另個意趣所在。場勘之初，闖溢屋內滿是木櫃、線板、磨石子等臺灣 30 年前流行的住家語彙，老建築裡老裝潢，讓一股懷舊情愫踟躕不散，於是設計意念承襲韶光荏苒的漸變，把舊風味絲絲入扣重譜於當代空間，諸如地面大理石紋理效果，乃蛻變自早期小塊面的亂花拼磚。

繞進三個診間，只見黑色皮革治療椅搭配古韻花磚，讓人有懵然迷走老時光的錯覺，不過這種今昔雙軸線演繹，卻是乘著巧合之便促成，對此楊竣松解釋：「為了做材料搭配，我先和業主確認治療椅顏色，原以為會是純白或米白，卻意外是深黑亮面皮革，正好切中懷舊的想像與設定。」烏亮皮革，泛澤古雅，設計再為其疊上白底黑紋花磚來襯，瞬盼瞬目間，猶走進 60 年代臺灣客廳。

再者老房一側漏水，因實際面有檢視困難，最後選擇可抗潮、吸濕且透氣的鑽泥板為材料，並輔借其濃密紋理漆上色料，在不飽和與低明度的藍、綠、灰顏色下，打磨出王家衛「春光乍現」裡那似舊非舊、情懷沉鬱質地。至於手術室診間須抑制藏汗納垢，罅隙叢密鑽泥板直接曝露恐有衛生虞慮，於是設計再從外層圍上玻璃盒（水氣由後方通風口排出），一層鑽泥板一層玻璃下，映著周邊物象及光源的模糊輪廓好似某種蝕版畫。採訪 劉芝君

2. 瞻看診所接待區，居家佈置是其特色。3. 以鏡面不鏽鋼打造出的直線吊燈橫佈於天花，意象璀璨。4. 廊道一側進等候區，一端通達三間診療室。5. 平面圖。

2. Reception space home-style layout is the charm. 3. Reflective stainless steel panels with linear suspended light fixture intertwined in the ceiling level. 4. Corridor into the waiting area, bookended with three treatment rooms. 5. Plan view.



6. 接待櫃檯隱於反射玻璃房間後。7. 反射玻璃立面再以黑鐵強化視覺效果。8. 鑲嵌木地板中央的大理石儼如地毯。
 6. Reception desk is hidden behind the reflective glass. 7. Reflective glass elevation with black iron details to reinforce the visual effect. 8. Marble inlaid wood flooring with carpet finish appearance.

Fineness in the cityscape

A forty plus year old building resides at a busy traffic street corner surrounded by the stench and sediment of mechanical civilization witnessing the the daily boredom like waves of heavy tides. Lead by Chun-Sung Yang, the Ahead Concept Design team made Tcal, a surgical dental clinic stand out from the urban muddy chaos with a decadent type of sparse beauty. The removal of layers of old interior finishes, the existing not too perfect structure of sloped beams, angled walls and various unlevelled elements are now all exposed. The rough character appears to be aesthetically interesting to the designer Chun-Sung Yang, as he notes:

"In terms of modern construction, this" casual "structure is very intriguing. It also echoes the scale of the currently disorganized large environment." Therefore the space design concept was based on reflecting the reality, yet not in chronically order as it slices through the scenery from inside out.

The owner sought a sophisticated quality of a clinical space within the design themes of disarray and juxtaposition of space. The composition of rich grained marble and wood veneer finishes in conjunction with highly reflective stainless steel panels throughout the space establish high-intensity visual effects.

Looking at the reception desk the Jiao Yan marble has a color fineness, with a Shen Shen wooden background. A wild convergence at the reception area, the contrast between the rich grained marble counters the subtle dark wood background. The vertical decorative stone plate as a partial embellishment enhances the plain wall elevation.

In the central seating area, within the jarring bone patterned wood floor large pieces of stone inlay appear like a thick broadloom carpet. Large pieces of marble divergent from the wall to the floor, create a visual effect on the space. From contraction to stability, the luxurious polished look of space is enhanced by mirror faced stainless steel panels.

Theatrical effect subvert the typical

In terms of creating the spatial atmosphere, spotlights from the roof level engrave light beams at the ceiling, accompanied with non-directional, intertwined, intricate linear fixtures and reflective stainless steel clad beams. The theatrical lighting conveys a jazz club type of charm. The designer explained: "the space is masked in a low warm glow of light, the reflection from the stainless steel panels are also relatively gentle. The only shining focal points are the lamps within the linear fixtures, the lights sparkling like brilliant stars in the night sky."

The design team utilized theater-style lighting and high contrast finishes. This subverts through an interesting sense of hi-tech the monotone clinical office atmosphere. There was also no intention to follow a traditional layout but rather there was a conscious effort to break the framework of the inherent medical office spatial relationship so as to lead to new behavioral patterns.

Leaving the elevator one reaches a corridor. Along the mirrored corridor that leads into the reception area. the traditional dense monotonous rows of seating no longer exists. Here, seating freely and loosely is arranged in space. The furniture symbolizes an extension of personal space therefore strangers can coexist in the space but still comfortably maintain privacy.

The second qualitative change was the blanking out of the reception counter. In a typical office, the reception desk is the main control point for receiving and discharge. The first line of communication. But in this case the designer intentionally recessed the reception desk to not be directly visible to the visitors.

In a room behind the mirror wall, Yang explains: "This reflected glass wall is bented inward 30 degree. With a black surface material the reflective glass create an occlusion effect. Deliberately hid behind the counter, the staff can clearly observe the patients' movements. Visitors subconsciously follow the designated circulation to the reception area and self seat, then the staff will step out of the hidden counter to take the initiative to provide an exquisite experience for patients."

New interpretation of the old time charms

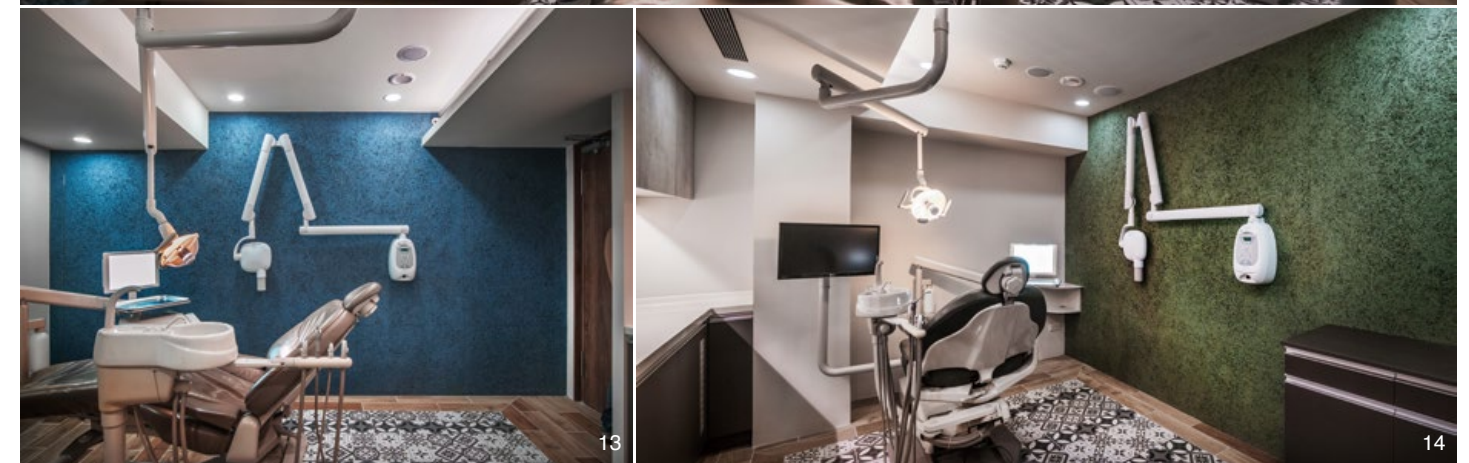
The interpretation of the co-existence of the past and present was another design focus for this project. At the beginning of the field survey it was observed that the existing house was filled with wooden cabinets, line board, washstone surfaces and other popular decoration vocabularies from 30 years ago. An nostalgic affair lingered within the old building.

The project consciously attempted to integrated the old flavor into the contemporary space such as the flooring's ground marble texture as a metaphor of the earlier years' small pieces of tile patterning.

Within the treatment rooms, the black leather dental chair is accompanied with antique floral rhyming tiles that bring back in time a nostalgic illusion. This two-directional interpretation of the past and present, is pleasantly coincident with material selection that contributes to an instantaneous stepping back into the 1960s' Taiwanese living room.

The old house's existing water leakage issue was technically inaccessible. Therefore, an alternative option was to use a breathable cement board finish material that allows moisture relief. By selecting a dense texture paint the unsaturated and low lux blue, green and gray colors resemble movie director Wong Kar-Wai style of nostalgia charm. Due to the higher sterilization requirements for the surgical procedure room, an additional glass box encloses the cement board detail to conceal the ventilation system. The glass box reflecting the surrounding objects diffuses the light source and resembles artwork.

9. 廁所空間延續木皮語彙。10. 灰色鑽泥板圍起玻璃盒後，在光影作用下洋溢藝術情調。11. 鏡面不鏽鋼包樑映出絢麗之景。
9. Wood grain veneer vocabulary continues into the restroom space. 10. Cement wall board decorated with glass frame that reveal an artistic charm. 11. Mirror stainless steel beam cladding reflecting gorgeous views.



12. 花磚烘襯黑色皮革診療椅，十分復古。13. 診間的藍色鑽泥板解決牆面漏水問題。14. 低彩度與相對不飽和的綠顯得溫醇。
12. Black leather treatment chair, in contrast to the decorative floor tiles. 13. Blue color cement board wall in the treatment rooms. 14. Low lux and relatively unsaturated green color express warmth.

建材分析 Material Analysis

- 診所梯間廊道直至接待區利用大量木頭做襯底材料，紋理鮮明大理石再局部點綴。
 - 接待區的一側立面為黑鐵搭配反射玻璃。
 - 接待空間的線性吊燈以及包樑材料為鏡面不鏽鋼。
 - 三間診療室會漏水的牆面，利用鑽泥板吸濕蒸散。
 - 黑色皮革診療椅，設計以白底藍紋花磚來搭配。
1. Clinic corridor to the reception area with generous wood finishes and decorated with textural marble embellishment. 2. Reception area elevation finished with black iron and reflective glass. 3. Linear suspended light fixtures and mirror finish stainless steel cladding enclosure. 4. Treatment room walls with water issue, cement board will allow for humidity evaporation. 5. Black leather treatment chair, in contrast to the decorative blue patterned white floor tiles.

溝通重點 Communication Note

- 業主將診所定位在高級區位，期盼吸引的就診病患為中上階層的族群。
 - 雖講究精緻感，但必須把預算控制在合理狀態。
 - 空間有漏水問題須解決。
 - 三間診療室其中一房為動手術之用，要盡量避免容易藏汙納垢的裝潢材料。
1. The owner was seeking a high-end clinic located in the city center, targeting upper-middle class patients. 2. Although exquisite design was expected, but the construction budget had to be maintained at a reasonable state. 3. Existing water leakage problems to be resolved. 4. One of the treatment rooms is a surgical suite therefore finishes had to be easily cleaned.