

Travel Memory – Impression

旅懷 · 印象

設計者 | 開物設計 / 羅尤呈 楊竣淞
參與者 | 呂家瑩
攝影者 | Hey!Cheese
空間性質 | 住宅
坐落位置 | 台灣
主要材料 | 木皮、絨布、實木地板、鍍鈦金屬、實木皮刷色、壁紙
面積 | 27 坪
設計時間 | 2017 年 3 月
完工日期 | 2017 年 11 月

Designers | Ahead Concept Design / Yu-Chen Lo, Chun-Sung Yang
Participant | Jia-Ying Lyu
Photographer | Hey! Cheese
Category | Residence
Location | Taiwan
Materials | veneer, flannelette, solid wood, titanium plated board, wood floor, wall paper
Size | 89m²
Design time | March 2017
Completion time | November 2017



瀛海間乘艇遊航，眺望水光接天一碧景並感受翻風迴動那股大氣清涼，皆是途中最讓人心神馳蕩之處，而種種五感所觸，皆成了屋主憶懷行旅時的一種印象。

瀛海印象 再現家屋

瀛海滄澗間乘艇遊航，眺望水光接天一碧景並感受翻風迴動那股大氣清涼，皆是途中最讓人心神馳蕩之處，但無論暢寄閱肆汪洋，抑或愜坐小船艙的暇豫時光，種種五感所觸，皆成了憶懷行旅時的印象。事實上，駕船出海正是本案屋主一種生活方式，因此擘劃住家時，設計師羅尤呈即擷取遊艇觀景窗的拱型輪廓，將此弧線投射於門廊、牆面以即兩扇落地窗牖，讓置身船艙凝觀海景的意趣再現於家屋。對此羅尤呈談到：「屋主一年有三個月時間會駕船在海上旅行，若住家能乘載這些記憶並持續在空間發酵，我覺得會是很棒的事。」

除摹寫船艙景趣，設計另將日晷月影下嬾遞的水域色彩滄染簾幔。置身頹溶汪洋，大海在光與水氣間並非恆常為清湛的豔藍，有時懿鏗澹澈，有時鬱決蒼青，有時則質地空濛，好似霽霽微雨後天色新霽初晴。羅尤呈以大海綢繆錯綜的顏色氣象來紬繹畫面，最後選了一張透光水藍紗簾，使之配合晨昏光線而顯出粉、青、靛、黛等斑斕多變的藍，將映於眼、存於心那抹水韻再度漫上窗；不僅簾幔，公共空間立面與家具也露取土耳其藍反映如此概念。

漫瀾 俱樂部情調

本案在性質上屬度假用第二宅，相較屋主長住居所以滿室滄彩詮釋，此處空間試從黝深色調來創造風格嬾變，使之如紳士俱樂部、濱海酒館等流瀉著曠曠光線以及遼蹟氛圍，讓場域既有雅緻情懷，亦能渾融一股為娛情所生的暇豫慵閒味道。對此羅尤呈談到：「屋主分享在國外海邊酒館的照片，還有自己駕遊艇出海時在船艙、撞球檯間和酒吧的圖像，希望在這樣深色調的風格中，打造全家人共享的地方。」

Yu-Chen Lo, Chun-Sung Yang



開物設計 / 羅尤呈 楊竣淞
開物設計追求形與質之間最微妙的共鳴。有靈魂的空間不僅存於視覺，更因其性格而傳遞出耐人尋味的魅力。對於設計的追尋不僅是風格化的美，亦關切有思想、有回應的觸動。
重要得獎紀錄：2017 艾鼎獎餐飲空間類銀獎 · 2016 美國 IDA Award 銀獎 · 2016 德國 INSIDE Award · 2016 日本 JCD Best100 · 2016 台灣 TID Award · 2016 義大利 A' Design Award 金獎 · 2015 德國 Red Dot Award · 2015 德國 iF Design Award · 2013 TID Award 新銳獎

Ahead Concept Design/ Yu-Chen Lo, Chun-Sung Yang
Ahead Concept Design seeks to find the best balance between material and spiritual world. A good design is not visual fun rather inspire people's mind, for their enrichment in humanity and art.
Awards: 2017 I-Ding Design Award (Silver) · 2016 IDA Award (Silver) · 2016 INSIDE Award · 2016 JCD Best100 · 2016 TID Award · 2016 A' Design Award (Gold) · 2015 Red Dot Award · 2015 iF Design Award · 2013 TID Award (Emerging Designer)

1. 瞻看公共空間，空間除了棕紅色木皮及土耳其藍立面，其餘皆是滄彩的黑灰白。

1. Burgundy color and Turkish blue meet with black, gray and white colors. Burgundy color and Turkish blue meet with black, gray and white colors.



2



3



4

確立前述主軸後，設計遂以老英式質感的棕紅色木皮鋪覆成室內襯底，藉此淳美又厚潤的色澤呈現俱樂部風華；唯偏紅木皮不免顯得古懣懷舊，為避免匠氣複製，亦如實再現屋主記憶中所覺木頭質地，因此設計只慎取紅棕語彙來用，以此漫抹蘸塗立面來蘊蓄色彩印象，其餘紋理與分割線條則一派簡練，服膺著當代美意識。從穠華紅木皮到飽滿清麗的土耳其藍，足見空間在大膽配色下召喚出張力，但這般詮釋不僅隱喻著旅行見聞，也在於體現屋主對生活的熱忱與冒險進取態度，就像豔藍對比棕紅木皮，便跳脫平衡與溫和的居家色彩框架，屋彷彿與人同。繼高對比與酣暢淋漓的用色後，設計再導入黑灰白等無色調材料去沖滌、舒緩畫面情境，讓風格標顯但不繁縷堆疊。

輕裝修 捨大破大立

擘劃個案時羅尤呈未有結構大破大立的處理，整個平面實際上僅卸下一堵牆，其餘則將生活關係、立面與動線釐整廓清以符合屋主機能所嚮。首先格局上有條深邃長玄關，但設計未將此畸零區塊收編化用，卻將之擬比為遊艇內的褊狹走道，並沿著玄關朝內覆滿棕紅色木皮，於是每逢人躍步踟躕在此日照晦霧廊道上，並接受著木皮與彼端窗光指引再輾轉抵達尺度充暢的客廳，尺度先縮再放的驀忽豁達，好似人自艙內躋登平曠甲板之上。



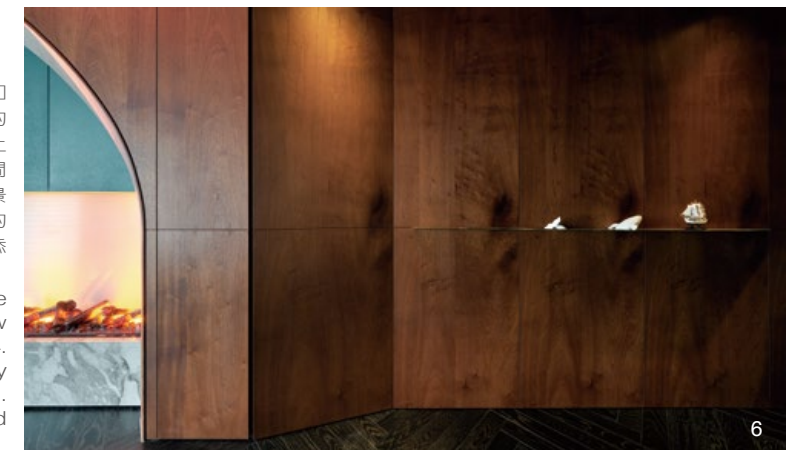
5

至於相連為開放平面的客餐廳，設計著眼共享場域為屋主所重，因而釋出一間毗鄰的臥房與客廳整併，讓場域輻輳樞紐地帶更寬適；沙發則採自由觀點讓業主肆意配置，毋須觀看電視的時刻，沙發可轉 90 度以兩扇拱型窗牖為視，一來目光可朝迤邐綿延長玄關迎觀、感受水平景深，二能和餐廳連結，讓家人互動更流暢。

秉持前述以整理取代重構的脈絡，為讓霸據客餐廳的橫樑與立面線位更和諧，同時亦不願損兩扇拱型窗的優雅對稱性，於是設計添入一支假樑再雙雙以同款木皮包覆，儼如造型綴飾般，讓虛實兩道結構駢儷偕馳於天花。同樣地，次臥主樑也採鑽泥板包覆來形成無壓迫的自然質地，對外稜角再鐵件收闔，最後再沿著長樑鋪設燈帶，使之從粗重結構蛻變為熒熒燈盞。採訪 | 劉芝君

2. 設計在天花添入一道假樑，藉以和立面線位以及兩扇拱型窗達到和諧的視覺感。3. 迤邐深邃的玄關在意象上儼如船艇間窄長的走道。4. 散布空間的拱型線條語彙，擷取自船艙的觀景窗輪廓。5. 平面圖。6. 嵌入木皮牆的黃銅色金屬為鍍鈦，為典雅的皮層添入了工緻精細之美。

2. Faked beam added to provide a proper visual sight. 3. Narrow pathway is like a boat pathway. 4. The interior reveals a shape similarly curved to a sailboat's hull. 5. Plan. 6. Titanium plated panel meets red brown color veneer in fine details



6



7. 餐廳一道藍色繙布牆置入木皮襯底空間，如此畫面優雅大膽，懷舊亦當代。8. 餐廳位於空間轉折處，設計將此區牆面以弧度進行整理，達到一種流暢調性。9. 天花在欄上鍍鈦收邊後，不僅輪廓更為鮮明，造型亦顯得更為精緻。



7. A blue color bandage wraps a wood surface - a dining room view. 8. Dining room view and its furnishing details. 9. Titanium plated ceiling and its delicate details.

Sailing boat and home memory

The most impressive moment while sailing is the view of the continuous Ocean that seamlessly links to the sky. This is a memory that will be kept in one's mind's eye for a very long time. Sailing is this client's life style and this weekend home design employs the impression of round shaped windows and a curved surface boat hull as a reminder of times at sea. Designer Lo said explicitly thinks that his design for one who sails on the Ocean three months a year is a direct association to that life.

Experiencing light on a sailboat is very different from light on land. Light on the Ocean is nebulous and the color is like a blue saturated mist. Lo selected a piece of opaque lake blue silk fabric for drapery; he also painted the surface wall and upholstered furniture pieces in Turkish blue.

Cozy comfort like a private club

This is the client's weekend home so it is not constantly in use. Lo said his design was inspired by photos, provided by the client which revealed many glimpses into the client's travel in overseas harbors. They are the photos of client's sailboat interior furnishing, his happy moment in a foreign bar, and selfie photos inside a sailor's club and bar.

An old British style club was finally selected as the main design concept and the interior evolved into a gentlemen's club filled with tranquil furnishings in a dark brown color material. Sharp contrast between the Turkish blue and brown create an energetic spirit signifying the braveness of Ocean sailing. But the dark color also harmonizes with black and white which appears in some furnishing elements.

Slight modification

The total layout was virtually kept intact, what makes the biggest change the disappearance of a partition wall. Even a problematic narrow pathway that linked the lobby to the main living zone was preserved as narrowness reminds the client's own experience on his boat. The ample living zone is like a deck receiving ample light from a large window where one can bathe and smell nature.

An insertion of a "fake beam" covered by veneer provides a symmetrical view and aligns in a proportion that usually seen on a real sailboat interior. Furnishing efforts were mostly concentrated on softening the thick structures. The lighting system creates a banding line and gives hint as to orientation.



10



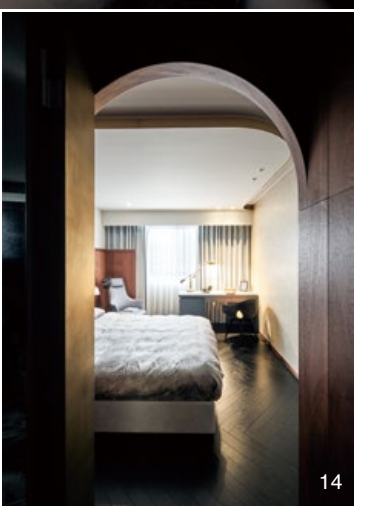
11



12



13



14

10. 臥房廊道窄且低，在不變更結構下重新調整門與立面的比例，讓畫面和諧。11. 主臥房，公共空間的材料與線條語彙延續此中。12. 牆面掛畫溝槽細部。活動式黃銅掛勾即便不掛畫，也是精緻的裝飾。13. 主臥衛浴走道狹窄，設計刻意加寬門框來虛化尺度，再利用鍍鈦包覆牆角，創造出走道變寬的錯覺。14. 從主臥衛浴廊道向外瞻看。

10. Modification of existing door size to meet the narrow pathway. 11. Master bedroom view. 12. Paint system groove was delicately installed. 13. Titanium band of the door frame creates an expanding illusion. 14. A view from the master bedroom towards the bedroom.

建材分析 Material Analysis

1. 天花以及玄關廊道所嵌入的薄板金屬為鍍鈦。
 2. 為呈現俱樂部與海岸酒館的空間氛圍，住家以偏紅且色澤濃郁的木皮來詮釋。
 3. 公共區域的藍色立面材料上，電視牆處為石頭漆，餐廳隱藏式櫃體則為繡布。
 4. 白色立面為素色帶紋理的壁紙。
 5. 主臥牆面的水平鑿線為掛畫軌道，上頭搭配的金屬為活動式黃銅構件。
 6. 次臥內的大樑以鑽泥板和鐵件包覆。
1. Thin titanium plate covers the ceiling and lobby partition wall. 2. Dark color veneer covers the surface of the space resembling the interior of a yacht. 3. Stone paint applied on the surface of the TV screen which is hidden behind the blue wall. 4. Plain color wallpaper in a white tone. 5. Bedroom partition wall is equipped with a railing system like an art gallery. 6. The second bedroom and its interior furnishing details.

溝通重點 Communication Note

1. 本案為屋主一家旅遊行經台北時的度假屋，並非每日居住使用。
 2. 屋主較不注重影視機能，因此客廳平面配置不以電視為主，而注重場域間人如何互動。
 3. 屋主對住家機能需求簡單亦不過份講究社交宴客，而僅是把家人日常需求整理出來。
 4. 空間雖以深色調處理，但盡可能以純粹的材料去建構。
 5. 住家以不更動多數格局與結構下，盡可能從既有條件發展出舒適與機能兼備的設計。
1. This is a weekend home for the client's family. 2. Living room was design to invite members to join in rather than watch TV. 3. Social events were not a necessary concern. 4. Even though dark color dominates the interior the material selected is not complicated. 5. Existing plan was mostly kept intact with only slight modifications made.