

# Stage 舞台

設計者 | 開物設計 / 楊竣淞 羅允呈  
參與者 | 游雅威 莊志達  
攝影者 | 陳心鼎  
空間性質 | 住宅  
坐落位置 | 台灣  
主要材料 | 紅銅、拼花木地板、胡桃木皮、磨石磚、木皮染色、鍍鈦  
面積 | 45 坪  
設計時間 | 2018 年 7 月至 9 月  
施工時間 | 2018 年 10 月至 2019 年 1 月

Designers | Ahead Concept Design/ Onion Yang , Yu Cheng Luo  
Participants | Kelly You, Dac Chuang  
Photographer | Hsin Ting Chen  
Category | Residence  
Location | Taiwan  
Materials | red copper, parquet wood floor, walnut veneer, terrazzo floor, dyed veneer, titanium plated panel  
Size | 148.7m<sup>2</sup>  
Design period | July – September 2018  
Construction period | October 2018 – January 2019



有別於以往住宅的單純面貌，極具表現張力的空間十分引人注目。

設計團隊大膽用色，精準操作材質語彙，捎來明快俐落的畫面與節奏。

初接觸本案，彷彿電影場景的住宅空間令人感到驚喜且好奇，此舉大大跳脫既有設計思維窠臼，開物設計主持人楊竣淞表示，基地位於 19 樓高樓層，放眼望去是一大片山景，業主是位單身男性，除從事投資理財的本業外，還有許多令人嘖嘖稱奇的副業，如表演舞台劇等，是個內心十分熱情的人，他對「舞台」非常嚮往，也對歌劇魅影這類具神秘感、古典感和聲樂感的角色很是著迷，因此設計團隊在進行空間發想時，特別著墨於室內的戲劇舞台效果，室外的綠意則成為最自然的佈景，企圖打造專屬於居住者的生活體驗。

## 以色調與材料解構空間

因著業主的喜好興趣，團隊在訂立主軸時便大量蒐集資料，參考英式住宅、歌劇院、畫作等，因緣際會下楊竣淞看到一張幾百年前的油畫圖片，一位王公貴族身著綠衣站在紅色布幕前，構圖上亦帶點紫色調，非常鮮豔，這種戲劇性很符合業主的特性，於是他決定從中擷取靈感，作為用色的依據；但他又想在這種帶著古典意涵的輪廓中注入些許老式台味的氛圍，以前台灣豪宅常使用的偏紅木皮、磨石子地磚等元素遂成為材質的一部分，希冀適切揉合西方英式風與台式豪宅感，並以設計師的手法重新詮釋空間。

對此，本案在材質拼貼的複雜性高，如何拿捏尺度比例，並在眾多語彙中精準呈現，考驗著設計師的功力。為了讓材料和平面間變成有趣、靈活性高的對話關係，楊竣淞嘗試劃掉廊道，並在公共空間裡置入四個斜拱，從平面來看，這些斜拱製造出一個三菱形的三分牆，設計師利用三分牆作為空間分界，他進一步解釋，拱形框景和牆體是本案中最重要的關鍵，它無形間讓室內配置變成一個不制式的幾何形；但為了讓這個幾何區域更具層次，楊竣淞在廚房區域拉出一條線，界定木地板和磨石子地的分隔，

1. 本案意圖打造出符合業主興趣和調性的生活場域，融合英式優雅氣息與老派台式豪宅底蘊，構建出匠心獨具的畫面。

1. The furnishing work is to create a living space that harmonizes living fabric and dweller's interest in performing art.

## Onion Yang , Yu Cheng Luo



開物設計 / 楊竣淞 羅允呈  
形質美學 (設計理念)  
形體與本質，是空間與設計之間互為因果的關係，也是構成價值的兩種元素。從原點探究形與質的奧義，用設計的筆，刻劃空間的個性，猶如為空間注入獨一無二的生命，流動，且隨著時間更添況味，是為「形質美學」。開物設計追求的是形與質之間的最微妙共鳴。有靈魂的空間，除了給人視覺上的驚豔，更因為特有的性格，延展出令人留戀再三的魅力。好的設計，是去開採出這樣的本質，琢磨出空間的存在價值，不只是風格化的美，更是有思想、有回應的觸動。  
重要得獎記錄：2019 台灣 TID AWARD · 2018 韓國 K-DESIGN AWARD · 金點設計獎 · 義大利 A'DESIGN AWARD · 2017 I-ding Award 國際設計大獎 - 艾鼎獎 (餐飲空間類銀獎) · 2016 台灣金點獎 · 美國 IDA AWARD 銀獎 · 德國 INSIDE AWARD · 日本 JCD BEST100 · 台灣 TID AWARD · 2015 德國 RED DOT AWARD · 德國 IF DESIGN AWARD

Ahead Concept Design/ Onion Yang , Yu Cheng Luo

Statement: Formative Aesthetic  
An object has a physical form and this is what builds a relationship with its surroundings and people. Ahead Concept Design looks for the essence of materials and gives any built form not just a functional use but meaning in relation to human life and its time. All their designs have a delicate balance between physical touch and spiritual refreshment. Their belief is that design needs to cultivate a dweller's mind instead of being transient in thought or of a stylistic mode.

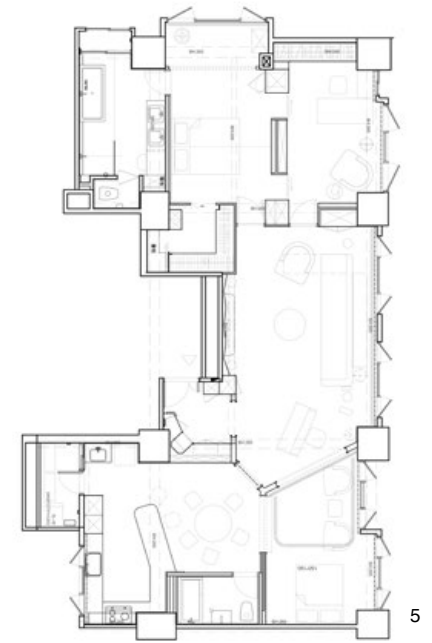
Award Record : 2019 TID Award · 2018 K-Design Award, Golden Pin Award, A'DESIGN AWARD · 2017 I-Ding Award · 2016 Golden Pin Award, IDA Award(Silver), German Inside Award, JCD Best100, TID Award · 2015 Red Dot Award, IF Design Award



2

並為房間框出不規則色塊，當布簾拉上便是業主的專屬舞台，讓他能盡情享受自身興趣，亦保留使用彈性，若日後生活形式改變時能有所因應。設計團隊選擇以純紅銅塑造斜拱，紅銅材質會隨著時間的流逝開始氧化，些許斑駁粗獷的氣味，讓房子忠實體現時間變化的過程，此外，為創造舞台意象的空間感，拱形上做了許多細節，例如 LED 燈管置入，藉此強化情境。

餐廚空間也可眺望連綿山巒，設計師以百葉窗形式呈現，有鑑於客廳顏色較為濃烈，若要放大廚房的山景視覺度，則顏色需要相對淺色，但又不希望公區被切分得過於零碎，故一樣使用木皮、藍色等元素，並點綴淺色花磚和磨石子地，再放入四張不同形式的椅子，讓其變成空間主角；天花疊鋪不鏽鋼，加大山景的反射度，廚房的亮，和客廳的暗產生有趣的對比，但隱約中又彼此相連。楊竣淞說，本案沒有艱深的設計論述，一切物件的運用都是為了要彰顯居者的人格特質，他期許公司完成的案子能「業主化」，讓每個空間有其獨樹一格的韻致，包容各式日常百態。採訪 陳映棠



5

2. 客廳選用大面積帶紅的胡桃木皮，並搭配上濃烈藍色調，視覺感強烈，各式元素完美結合且不顯繁複，是開物設計團隊的自豪之處。3. 楊竣淞拉出一條無形的界線，界定地坪材料的差異，使地面被框出一個不規則的幾何造型，活化材料和平面的關係。4. 拱形框景是空間中的重點，設計師以真正的紅銅塑造，讓材質的氧化特性可表現出時間流轉的軌跡；由三分牆圍塑出的房間擁有極大使用彈性，現階段以布幕保有隱私，也可視為業主的表演舞台。5. 平面圖。6. 楊竣淞設計師表示，此角落的構圖靈感來自某幅歷史悠久，描繪皇族的油畫，他擷取其中的色彩，並揣摩其氛圍，華麗中又帶點俗麗趣味。

2. Red and blue colors dominate the living room. 3. The floor materials vary from one room to the other, and they mainly follows spatial geometrical orders. 4. The Spatial layout is dominated by skewed walls with copper covered ribs as supporters. 5. Plan. 6. The design concept is inspired by a century old painting, which displays a nobleman enjoying theatrical performances.



3



4



6



7. 基地位於高樓層，餐廚區亦能透過百葉窗眺望戶外綠景，藉由花磚及磨石子地坪拉淡色調，以利突顯外部景緻。8. 濃郁的黃色被塗鋪於餐廚空間，楊竣淞自述本案用色大膽，在色彩組合上非常仔細，希冀呈現出油畫般的飽和度。9. 玻璃屏風可依需求自由開闔，其輕透特質也能減輕量體架設所帶來的阻礙。



8



9

7. Grand window view of the high-floor level apartment. 8. Very bold yellow color is adopted between the kitchen and dining room. 9. Glass panel screen invites visual penetration.

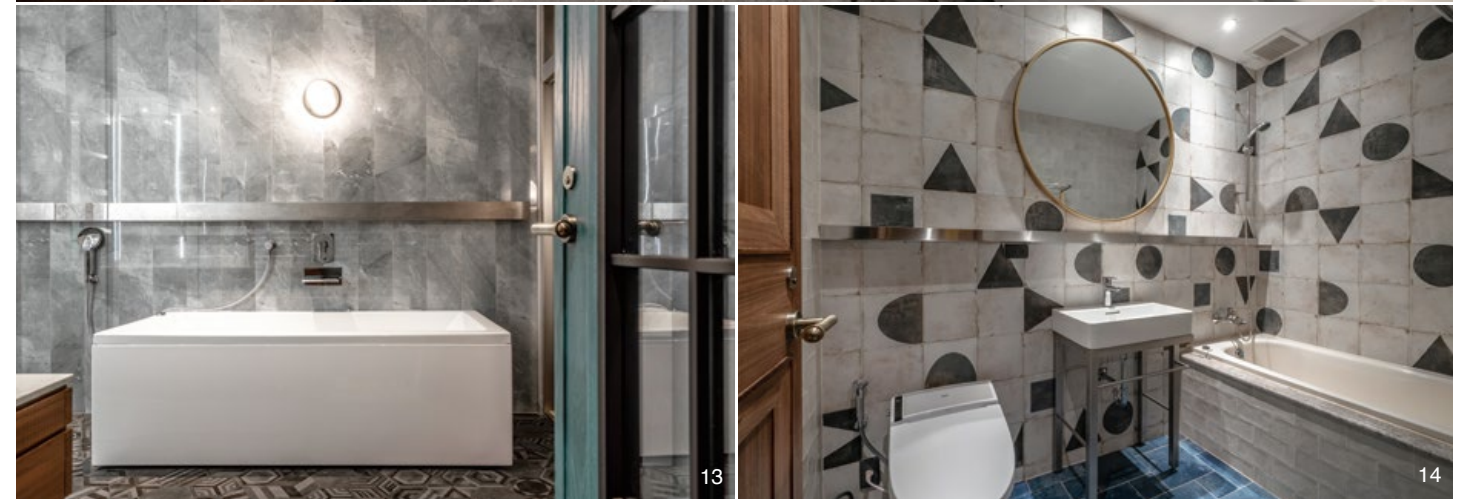
This apartment is not situated within the typical city fabric but in a 19th floor and has a direct natural mountain view. The single male client is a professional investor but involved deeply in performance art. His full passion in theatrical performing gives the design a beautiful fantasy; life is a drama, and the home is a stage. The design team started from this picture and turned the space into a stage where the mountain views are the backdrop.

#### Color and material on the stage

Before the design started the design team made extensive research of opera house furnishing styles, and paintings depicting performances. Yang confessed that his was impressed with an oil painting that inspired him. The work showed a nobleman standing in front of stage backdropped by a red screen; this painting provoked Yang's deployment of color and its flamboyant style. With a vivid Western performance fashion Yang further inserted some local elements such as a terrazzo floor, and used extensively veneers dyed red.

The spatial layout in this unique residence is different from that of a typical plan; the space is divided by skewed walls, some can be seen from one side to the other, and some are solid. The walls dividing the space have non-perpendicular angles and forms polygonal shapes. The material used on the floor follows the layout with precise border except at the portion in front of the kitchen that corrupts the geometrical order. The floor material includes terrazzo and wood in several parquet patterns. Red copper ribs supporting the wall provide a prominent impression; the weathering surface signifies the meaning of time in this residence, and hidden LED lighting system illuminates the wall in a theatrical mode.

The dining room and kitchen faces the mountain view. This space is slightly different from the main living zone as light color dominates the interior and some blue elements were used. The ceiling has stainless panels and the reflective natural light further illuminates the space and stands vis-à-vis the dark living room. Yang claims he created a space representing the internal desire of the his client; and he truly believes that interior furnishing work needs to address the true personality of its user.



10. 書房與主臥的底色則延續客廳偏藍調，平衡整體空間感。11. 藍綠色木皮染色會因時間變化或受光不同，而產生出偏藍或偏綠的視覺差異，這是人工無法做到的自然美感。12. 主臥衛浴共用了五種花磚，每種花紋和磁磚厚度不一，遇到仰角部分收邊難度極高，須思考各種細節與工法。13. 明亮、讓人放鬆的主臥衛浴。14. 客用衛浴一隅。楊竣淞提到，本案聚集多種材質跟語彙，如何不慍不火表現出特色和張力，是他覺得最有趣的地方。  
10. Reading room and bedroom retain a similar color tone to that in the living room. 11. Lighting treatment was very challenging in the living room. 12. Five color and motif tiles in the bathroom provide a fresh spirit. 13. Master bathroom. 14. Many materials join together to form a "collage space".

#### 建材分析 Material Analysis

1. 室內出現多種濃豔的色彩和相異元素拼貼，企圖讓材料和平面的關係變得更有意思變化。2. 為符合空間調性和尺度，家具軟件大多採用訂製款，以利尺寸進行微調。3. 由於客廳天花板為藍色，吸光狀況較難掌握，故本案在光源配置上的挑戰遠比想像高。  
1. Heterogeneous material and color clashes form an energetic spirit that is the true desire of the client. 2. Custom designed and fabricated furniture pieces. 3. Lighting design was a big challenge in the living space because the ceiling is painted blue, which absorbs natural light at an incalculable scale.

#### 溝通重點 Communication Note

1. 業主的興趣和嗜好是本案的關注重點。設計團隊蒐集大量資料，歸納出設計主軸。2. 設計師希望在英式劇院優雅的氛圍中，注入些許「台味」，例如線板呈現參照台灣舊時豪宅比例，創造出既衝突又共融的畫面。3. 業主本身有一些收藏品，如何透過擺飾，讓這些既有物品得以發揮優點弱缺點，是考驗之一。  
1. Client's personal interest in theatrical performance inspired the design idea. 2. The interior is a space where a British drama stage mingles with Taiwanese style performing art. 3. The client's art collection is properly stored and displayed in this residence.