

# The Coexistence

## 文野雙質

設計者」 城市室內裝修設計有限公司 / 陳連武  
參與者」 吳宜倫 康家綺  
攝影者」 賴壽山  
空間性質」 住家  
坐落位置」 台灣  
主要材料」 大理石、清水混凝土塗料、耐磨地板、黑鏡、鍍鈦板  
面積」 50 坪  
設計時間」 2015 年 11 月至 2016 年 3 月  
施工時間」 2016 年 3 月至 2017 年 2 月

Designer」 Chains Interior/ Lien-Wu Chen  
Participants」 Yi-Lun Wu, Chia-Chi Kang  
Photographer」 Shou-Shan Lai  
Category」 Residence  
Location」 Taiwan  
Materials」 marble, water concrete coating, wearable floor, black mirror, titanium plate  
Size」 165m<sup>2</sup>  
Design period」 November 2015 to March 2016  
Completion period」 March 2016 to February 2017



場域從「氣質形象化」破題，將人昂藏氣宇擬比山之巍峨，  
諸如將折板天花臨摹戶外山勢參差輪廓，  
切出一種簡練的重疊疊嶂觀象，  
再搭配清透落地窗，則遠邊群嶽山稜儼如朝屋一筆迤邐而來。

欽張雲濤間，漏泄了遠岫那嶙峋連綿的山脊，河岸人家隔水遙望彼方一片靜巉巉崗  
巒朋儔而立，仰矚俯映，彌習彌佳。在這次住宅案中，陳連武將基地嵯峨山景與屋主  
內藏的雄邁氣質相互指涉，先導入巖嶇一重重稜線作線條嶙峋天花折板，再將山壁礦  
脈擬成立面構成；至於屋主形於外那份淹雅儒氣，則藉格柵所具沉穆、內斂之質來加  
以投映，設計語彙既文亦野，將人、屋、景巧妙串成一體。

### 群嶽山稜 朝屋迤邐

自高樓家屋矚望天際大觀，視野是一片澶澶川流遶青青疊嶂，這般豫景不僅為室內  
揉入了恬適況味，長窗成排迎抱著自然即景，讓場域更添豁達及舒揚韻味。陳連武談  
到踏進空間霎那，場域因外景之惠而流露放曠十分氣象，尤其男屋主初見爾雅蘊藉，  
但實際談話卻隱隱流露氣概豪膽，如此猶似大山大水的性格面，賦予了陳連武「空間  
擬人化」靈感，對此他談到：「業主與山水氣勢，那種氣質交映是十分吻合的，感覺  
就像房子在找主人，所以當下便有了擬人化空間的雛型，試圖把戶外山景的氣勢與屋  
主氣質連結。」於是設計從氣質形象化破題，將人雋昂昂藏擬比山之巍峨，從「山」  
來作結構線條與裝飾材料的原型。

疏淪成開放平面的客餐廳，設計引折板天花勾摹山勢參差輪廓，清透落地窗下，無  
厚重立面藩籬，造型折線急、緩、陟、降動態儼如群嶽山稜由外而內之一筆迤邐。當  
折板切出一種寫意、簡練的重疊疊嶂觀象，陳連武再接再著巧妙鋪陳如是：「人的氣質  
與內蘊有關，正如山的底層有礦藏，所以山之下存有金屬礦脈，是我對這位業主及其  
住宅的另種想像。」在陳連武描述裡，當天花意指巖嶇山勢，其下承接牆體，自然是一  
道道「山剖面」，而岩壁內則韞著熠熠鑠鑠金屬礦物；再者因礦物存於地層罅隙中，  
開採時亦伴隨石礫等雜質，所以樣貌是粗澀、光潤兼而有之。為詮釋此情此景，於是  
公共空間一整面實透相間壁櫃上，門片（實）覆以水泥塗料，壁龕（虛）展示格則用  
鍍鈦板襯滿，仿若金屬與岩塊錯雜，此舉也正如陳連武所言，從顏色、材料精粗對比  
等室內設計方法來詮釋礦脈壁立一景。

## Lien-Wu Chen



城市室內裝修設計有限公司 / 陳連武  
淡江大學建築系暨建築研究所畢業，其設計概念不僅強調內裝的重新鋪陳、設計細節，更善於以建築的宏觀，從整體上全面改良，擊劃更適於居住的合理化動線格局，甚至藉由設計改造，讓原建物對外取得更好的對應與尊重關係，呈現更優異的空間品質。  
重要得獎紀錄》2017 德國 Red Dot Award: Interior Design Winner · 2016 美國 Interior Design Best of Year Awards Honoree · 2016 台灣 CID Award 當代國際設計大獎 居住空間金獎 · 2015 美國 IIDA Global Excellence Awards Winner · 2015 德國 German Design Award 評審團特別推薦獎 · 2015 德國 IF Design Award · 2014 中國現代裝飾國際傳媒年度家居空間大獎 · 2014 日本 Good Design Award · 2014 義大利 A' Design Award Interior Space and Exhibition Design Silver · 2013 台灣室內設計大獎 居住空間類單層 TID 金獎 · 2013 美國 IIDA The Best of Asia Pacific Design Award 銀牌獎

Chains Interior/ Lien-Wu Chen  
Graduated with a Master Degree from the Department of Architecture at Tamkang University. Chen's design concepts not only focused on the interior reorganization and design details but also emphasize the building's overall improvement including rational space layouts and circulation. Through the design of transformation, this allows the original building to achieve a better quality of space through better communication and interaction with its surrounding environments.  
Awards》2017 Red Dot Award: Interior Design Winner · 2016 Interior Design Best of Year Awards Honoree · 2016 Taiwan CID Award Residential category Gold award · 2015 IIDA Global Excellence Awards Winner · 2015 German Design Award honorable mention · 2015 IF Design Award · 2014 Chinese Modern Decoration International Media award Residential category · 2014 Japan Good Design Award · 2014 A' Design Award Interior Space and Exhibition Design Silver · 2013 Taiwan Interior design TID Residential category Gold award · 2013 IIDA The Best of Asia Pacific Design Award Silver

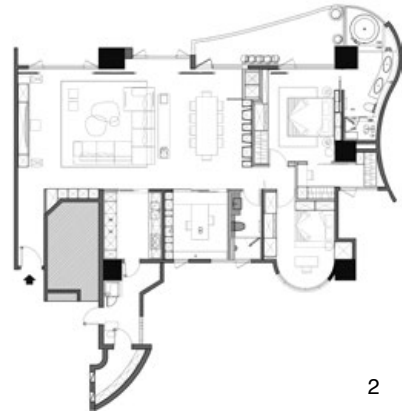
1. 壁櫃意象擷取自山剖面，材料清鏤、粗糙對比，恰如金屬礦脈藏於地層中。

1. Wall cabinet design shape was inspired and then taken from the mountain profile. With the material

2. 平面圖。3. 格柵隱秀且內斂，設計藉此表達屋主氣質爾雅蘊藉一面。4. 天花起伏折板造型，呼應室外層峰連綿的視野。5. 餐桌後方立面，壁龕展示格能擺置蒐藏名酒。

2. Floor plan 3. Gentle and subdued design language that implies the owner's elegant character. 4. Three dimensional variations from the ceiling plane echoing the surrounding mountain view. 5. Dining room features a wall for collection display.

事實上最初構想，壁櫃處面材應以橘紅鐵鏽板呈現，讓礦山斑駁裸裡的形貌更鮮活、色韻更雄贍濃快，唯鐵鏽板對女屋主來說太過粗獷，因此最後調性再收斂，退回相對清雅且不乏原質味道的水泥皮層，亦是陳連武從材料，寓託初見男主人那文質彬彬印象。



2

#### 淹雅儒氣 兼有曠放

空間第二種擬人化設計，傳遞了屋主浮於外、潛於內兩種氣質反差——淹雅與曠放兼而有之，於是陳連武利用線條與軟件對比性來投擲這份意念；其次，因公私場域的斷隔明確，設計便反覆在客餐廳、書房、主臥和衛浴等分區操作「折線」、「格柵」以及「分割矩形」三組裝飾語彙，藉著類同元素穿插和延續，形構成環境裡裡外外一體韻致，也順勢將「文野雙質」主題導入操作語彙上。

適勁抑揚的折板天花喻比曠放，至於格柵則鑄入了一股文氣。在建築中格柵具韶秀清美風致，陳連武著眼其半隱半透、線條嚴謹內斂，每每附著空間總能涵養嫺雅、幽蹟靜好情綉，因而便擷取以投映屋主的外貌氣質，他解釋：「格柵的含蓄細緻、山形天花的曠放瀟灑，正好是我對屋主第一印象與第二印象的對比，所以空間摻了些禪風，但又有個性化的折板。」本案格柵廣泛用於立面，但同中且求異，繞進衛浴後則作為天花構成。事實上衛浴因建築有機輪廓而存有一道室內弧牆，此立面配置流線形浴室櫃之餘，上方另鋪砌分割的矩形鏡，每逢弧牆折轉進退，鏡射亦有微毫角度偏移，於是櫛比鱗次格柵天花與虛象對映，便湊出了綿密山形畫面，有陳連武將客廳折板天花以另種形式再現的深意。

織品點綴上，沙發的折線紋抱枕是山形天花的微型，客廳條狀拼貼的馬毛地毯、書房內幾何方格的絹染壁布，抑或浴室裡玻璃馬賽克磚，皆從立面分割矩形此一結構而來，陳連武言及用造型增補環境層次之際，也要懂得收，所以語彙形式盡量恪守三種之內。再者除了文野氣質的攪補，男女主人對美感氛圍也有濃快、清約不一偏好，就男主人使用的書房，簡明中襯以紋樣如狂草筆觸的窗簾款式，表述其文氣亦不失瀟灑閱肆氣度；至於主臥幕覆在深淺褐色皮層下，回應女主人對和諧澹雅寢寐空間的需要。客臥則作為男主人應酬晚歸的備房，年輕、陽剛而有幾許粗獷意蘊。採訪 劉芝君



3



4

5

Among the sea of clouds, the mountain ridge is revealed, standing by the riverside embracing the incredible landscape. In this residential project, Chen Lian-wu combined a magnificent mountain scene with the owner's inner temperament as design inspiration. He borrowed the natural images and reinterpreted them out of building elements within the spaces with a design vocabulary that unified the people, space and view.

### From the magnificent mountain to the space

There is an amazing sky top view of the greenery from this high-rise unit. It brings scenes of comfort into the space through a series of large window openings that embrace nature and the relaxing atmosphere. The designer, recalling his memories about the breath taking view, also remembered his first impressions of meeting the owner. With a scholarly appearance but carrying a straightforward boldness, the contrasting temperament gave the designer the idea of "space anthropomorphic" as the design concept. Chen said: "the owner's character and temperament really match up with the landscape momentum so it felt like the house was looking for the owner. Therefore, the design of the temperament of the visualization of space, the "mountain "was the inspiration for the design language and material selections' prototype. Chen Lianwu continued: "people's intrinsic temperament is in parallel with the mineral deposits at the bottom of the mountains." Moreover, the mineral treasure is mostly accompanied by gravel and other impurities, so the appearance is sometimes rough, sometimes smooth or both. The open plan living and dining space are connected by a folding plane ceiling whose profile is as abstract form of the surrounding mountains.



6. 獨立式廚房，流理檯背牆亦為格柵般的直線紋理。7. 客廳馬毛地毯流露陽剛韻味。  
8. 瞻看廊道動態。9. 書房門敞開，視野便可直探窗外即景。  
6. Island Kitchen with linear pattern back wall 7. Mohair carpet reveals the masculine quality of the living space. 8. Circulation overview 9. Open view from the study





10



11



12

10. 主臥房，以深淺褐色創造寧靜的睡眠空間。11. 臥房前的小玄關，壁面懸掛方格狀的裝飾鏡。12. 書房壁布有濃烈的撞色對比。13. 格柵天花與鏡像形成山形畫面。14. 衛浴的馬賽克磚，回應立面分割矩形的造型語彙。  
10. Master bedroom, amber color tone scheme forms a quiet sleeping space 11. Vestibule to the sleeping quarter with a decorative mirror. 12. Strong color contrasting wall fabric in the study den. 13. Mountain shaped mirror reflection of the ceiling grilles. 14. Geometric mosaic in the bathroom

#### 建材分析 Material Analysis

1. 室內木作格柵為帶灰的木皮。2. 壁櫃灰色面板為水泥塗料，開放櫃為金色鍍鈦。3. 客廳沙發為麂皮，地毯為馬毛。4. 次臥背牆為絲質緞面的手工絹染壁布。5. 浴室鋪砌色變的玻璃馬賽克磚。6. 住家毗鄰河岸，因此室內用了全地暖設備。  
1. Gray tone wood veneer interior wood grille screen. 2. Gray cement coated wall cabinet panels with open cabinet for the gold titanium open cabinets. 3. Living room suede sofa on a mohair carpet. 4. The feature wall upholstery in the second bedroom is handmade stained silk cloth. 5. Bathroom paved with color glass mosaic. 6. The house is situated by a river bank and has a radiant floor heating system throughout the house.

#### 溝通重點 Communication Note

1. 壁櫃材料原是鐵鏽板，在屋主期望細緻空間下改為水泥塗料。2. 因公共空間具招待機能，故折板內燈光可調控顏色。3. 需求大公共空間，作為招待與會客場所。4. 屋主已購入沙發，隨格局尺度拉開，必須重新調整沙發的數量和色調。5. 公私領域要確實隔開，當前區有嘈雜聚會活動時，睡眠空間仍安靜。6. 質材與顏色因應男女屋主喜好而調整。  
1. Wall cabinet was originally designed to be steel plate with rusty finish. It was replaced with a cement coated panels to meet owners the more refined space expectations. 2. In order to accommodate the various gathering functions in the main space, the public space lighting can be controlled and change color independently. 3. Owner requested a large gathering space for entertainment use. 4. Owner already purchased an adjustable seating set so the design team took this into consideration when making color and seating arrangements. 5. Public and private areas were to be completely separate. So when hosting a party the sleeping quarter had to remain quiet. 6. The finish material and color were fine-tuned and adjusted according to the owner's preferences.

The feature wall in the public space is decorated with titanium plates, just like a metals mine embedded within mountain rock. An inner treasure covered with roughness. The designer then used interior design techniques of color and material texture in contrast to interpret the mountain scene.

During the conceptual design stage, the wall of cabinets' material was selected to be orange colored rusty steel panel representing the rough and bold mountain image. The mottled spot of the mine was fresh and the color rhythm supportive but the rusty panels were too rough for the hostesses so the final design then returned to the relatively elegant finish that aligns with the gentlemanly impression.

#### The concurrent contrast

Anthropomorphic as design notion that represents the owner's natural contrasting temperament. Refined but straightforward, sophisticated and frank. Designer Chen utilized materials and a design language to express the contrasting concept. The separation between public use and private areas is distinctively clear, illustrated through the repetitively applied design vocabulary of "folding plane", "screen" and "split rectangle" throughout the space. They can be seen in the dining room, study, master bedroom and bathrooms. Mindful repetition and continuation of those design elements formulate a uniform continuity.

The folding plane of the ceiling signifies straightforwardness in contrast to the refined elegance of the grille screen. In the interior design vocabulary, the grid screen is generally associated with a quiet elegant spatial character. The grille screen is made with rigorous lines but still delivers a semi-hidden introverted space eminence comparable to the owner's disposition. Chen explained: "The refined and meticulous grille, with a mountain-shaped ceiling of a boisterous contrasts is just like my first impression about the homeowner. The project was designed to contain a Zen like elegance at the same time with a personalized twist.

The organic shaped bathroom wall is the organizer for various plane and material conversions. The grille is widely used on the elevation and transforms into the bathroom ceiling plane. Together the mountain-shaped screen, folding plane, screen wall and reflected landscape images reinterpret the meaning of contrast.

Among the decorative details, the sofa pillows are mountain-shaped Fabric embellishment echoed with the ceiling plane. The striped collage style of the mohair carpet in the living room, geometric grid of the silk dyed wall cloth in the study and the glass mosaic tiles in the bathroom are all based on the framework structure of geometric subdivisions.

The master's study is concisely lined with a curly style such as curly curtain. The master bedroom is power covered in a dark brown material under the cortex in response to the hostess who requested a harmony for the body in space while the masculine themed guest bedroom represents energetic youth.



13



14