

# Wagashi 和果子

設計者」 城市設計 / 陳連武  
攝影者」 沈仲達  
空間性質」 住宅  
坐落位置」 台灣  
主要材料」 磁磚、玻璃、大理石、壁紙、木地板  
面積」 45 坪  
項目年份」 2019 年

Designer」 Chains Interior / Lien-Wu Chen  
Photographers」 Zhong-Da Shen  
Category」 Residence  
Location」 Taiwan  
Materials」 tile, glass, marble, wall paper, wood floor  
Size」 148.7m<sup>2</sup>  
Project year」 2019



春蘭谷中藏，夏荷池上飄，秋菊草間芳，冬梅樹抹妝。

—陳連武

和果子（わがし），日文意思即為「日本的糕點」，作為糕點，和果子更像是一種藝術品，和果子的歷史與日本茶道息息相關，兩者皆承載大自然的變化以及日本的工藝文化。陳連武設計師運用日本著名和果子藝術家水上力以微型景觀為創作的概念，視空間為一方木盒，依循四季的變化、花卉以及色彩，透過空間作品「和果子」逐一闡述。

#### 藏納四季

「和果子」在車水馬龍的鬧區之中取得一靜僻之處，藏身在台北市中正文化特區的小巷弄內。大片落地窗將建物前方公園的景緻映入眼簾，窗景隨四季交替變換，而空間也依據春、夏、秋、冬的流動瞬息萬變。

#### 春蘭谷中藏

方入門，以春天迎接腳步，嫩綠的初芽從黃土中優雅展開，玄關穿透式的屏風，若隱若現的劃分空間並穿透視覺；使用承裝和果子的木盒為概念，將天花板切割成大小不一的方格，為設計概念引入開端。淡綠的牆面懸掛著台灣第一位抽象派畫家陳道明的畫作，利用藍綠色彩抽象道出春蘭氛圍；延伸至吧台空間，檯面使用大理石融合玉結晶的石材，透綠的紋路融合開放式的公共空間設計，更顯綠意盎然，後方則利用若有似無的格柵結合鏡面，不僅隱藏了大片的收納空間，同時也令視覺更為開闊。

#### 夏荷池上飄

主臥與次臥分別規劃兩條動線，透過拉門劃分公私領域。主臥室引入盛夏氣息，耀眼的陽光讓萬物充滿生機，色彩更加鮮豔濃郁，床頭牆面選用荷葉壓製而成的壁紙，荷葉的葉脈堆疊交織，讓人不禁想起孟浩然的「荷風送香氣，竹露滴清響」，並以藝術掛飾點綴；另一面牆延續公共空間的藍綠色畫作意象，拉門後方隱藏了一間更衣室以及主衛浴。

## Lien-Wu Chen



城市設計 / 陳連武  
城市設計成立於1999年，是一家專業服務高層客戶的專業室內設計公司，以追求創新設計為目標，擅長在空間融入藝術，提升整體設計層次，並恰如其分地使用不同的材質與顏色創造出截然不同的設計質感。  
城市設計從開業以來便不間斷地挑戰自我的設計與創作手法，在設計總監陳連武的帶領下，城市設計憑著對設計與美感的熱情和執著，獲得無數世界級獎項肯定，更於2017年收齊全球四大工業設計大獎的獎項（德國 iF 設計獎、德國 red dot 紅點設計大獎、日本 G-mark Good Design Award、美國 IDEA 傑出工業設計獎），成為台灣首位獲此國際殊榮的頂尖團隊。  
陳連武設計總監，在國內外的各項設計比賽上總是常勝軍。提倡「後風格主義」主張設計不應該被風格侷限，而是去挑戰自己的創意並顛覆自己已發展的形式與思維，著重設計概念的整體呈現。

#### Chains Interior / Lien-Wu Chen

Chains Interior was founded in 1999 and is now a well-known interior design firm specializing on high-end designs. It offers innovative design services and is particular in integrating into space. Its work always displays a sensibility in tectonic richness and fine details.  
Chains Interior's director Lien-Wu Chen has led his team for the last two decades and endeavors to explore the horizons of design by always challenging itself to reach new ground. The firm has won numerous awards around the world including an iF award, red dot award, G-mark Good Design Award, and IDEA Award. It is also the first firm to clinch all four top end design awards in Taiwan.  
Lien-Wu Chen, has proclaimed that style is dead and believes that good design should provide a total relief from style come out from the fundamental problem to question oneself. A good design is a consistent representation of authorship.

1. 方入門，以春天迎接腳步，嫩綠的初芽從黃土中優雅展開。  
1. Lobby space represents bright spirit in spring time.



### 秋菊草間芳

多功能房就如秋空無常態，可以隨心變化。擺張桌子可以喝茶聊天、下棋娛樂；收起桌椅，拉出隱藏在牆面中的臥鋪，闔上兩側的拉門，不僅可以作為次臥的一部分，同時也能是獨立的客臥空間；房內演繹著秋天轉紅的樹葉、熟透的穀禾與棕色木皮，在溫暖中又夾帶絲絲寒意，牆上黃澄澄的繡菊道破空間的主題，也作為即將進入四季尾聲的前奏。

### 冬梅樹抹妝

最後來到冬日的次臥，以藍天、白雪為主調，搭配木材溫潤手感，迎來溫暖的冬季風貌。與多功能房相隔的牆面，改以深藍色調，並將擺飾、地毯換上如冰如雪的色澤和紋路；陳連武設計師將門片以噴漆收邊，一面藍、一面橘的巧思，透過鏡面延伸雙向的空間與動線，敘述著秋、冬交替的時空變化。

「和果子」是一特殊且稀有的建案，建築不高、基地也不大，業主希望將建物賣給真正的有緣人，雖地處位置絕佳，但摒棄小坪數的買賣手法，選擇最舒適的尺度規劃一層一戶。這也讓設計師有了更多的發揮空間，將光影結合空間動線，為「和果子」注入自然的生命力。採訪 | 歐陽青昀



2. 淡綠的牆面懸掛著台灣第一位抽象派畫家陳道明的畫作，利用藍綠色彩抽象道出春蘭氛圍。3. 玄關穿透式的屏風，若隱若現的劃分空間並穿透視覺。4. 使用盛裝和果子的木盒為概念，將天花板切割成大小不一的方格，為設計概念引入開端。5. 吧台後方若有似無的格柵結合鏡面，隱藏了大片的收納空間。

2. Upon a green color wall hangs an abstract painting. It signifies orchid flows bloom in spring time. 3. Hollow screen provides visual penetration between spaces. 4. Ceiling formation provides a visual hint of a typical Wagashi box. 5. Bar area and mirror cladding panel behind the bar table.





Wagashi is both a Japanese dessert and represents a stylistic Japanese food culture associated with the tea ceremony. It is said that the best Wagashi master learns his craft from nature and traditional Japanese craftsmanship. Wagashi master Chikara Mizukami's art was studied by Lien-Wu Chen and he used a Wagashi box as inspiration to house four sectors that represent the natural variation of four seasons.

#### **Hidden four seasons**

Wagashi is situated in a quiet alley; it enjoys a park view where plants change colors and vegetation follows the rhythm of four seasons.

#### **Spring orchids are hidden in valleys**

The lobby represents spring when green sprouts pop out from the ground in the spirit of rebirth. A hollow screen stands in the lobby to open up a wide view in the living space. The ceiling formation segregates several grids to provide visual hints of a typical Wagashi box. Upon a green wall hangs an abstract painting by a famous artist. This green patch extends to the bar area and mingles into a beautiful marble of strong crystal like formations in green color. Right behind the bar area are mirror grating panels which expand the view into an endless horizon without border.

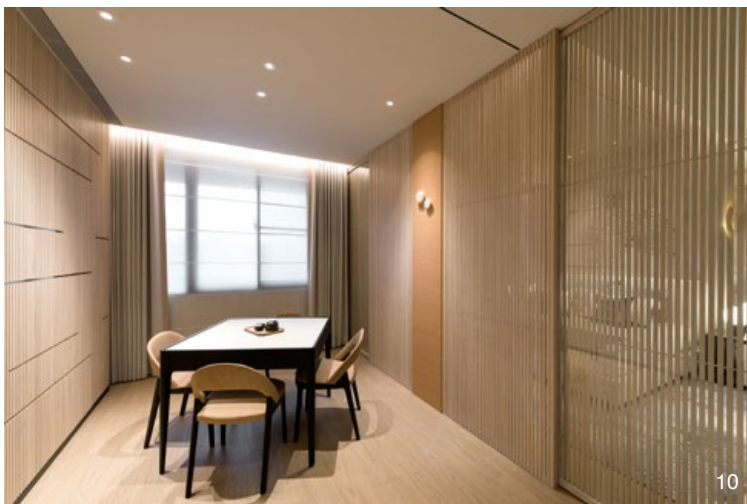




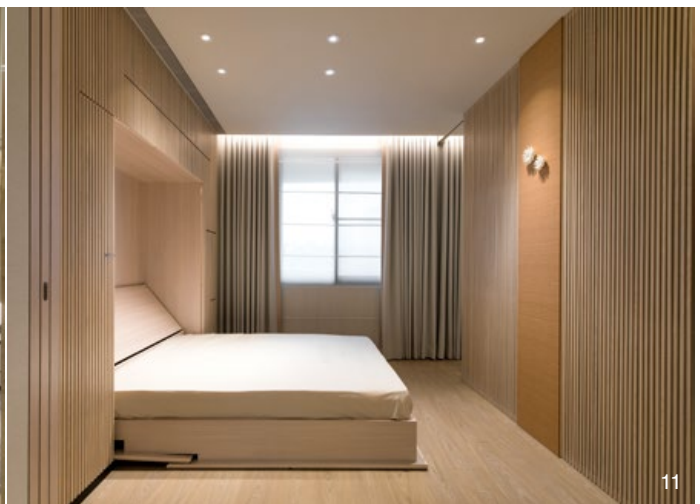
8

6. 主臥室床頭牆面選用荷葉壓製而成的壁紙。7. 拉門後方隱藏了一間更衣室以及主衛浴。8. 主臥室引入盛夏氣息，耀眼的陽光讓萬物充滿生機，色彩更加鮮豔濃郁。9. 平面圖。10. 多功能房可以喝茶聊天、下棋娛樂。11. 多功能房拉出隱藏在牆面中的臥鋪，闔上兩側的拉門，成為獨立的客臥空間。

6. Lotus leaf motif behind the bed set in a master bathroom. 7. Dressing closet and master bathroom behind a sliding door. 8. Master bedroom invites a fresh spirit of summer energy. 9. Plan. 10. Multiple function room. 11. Multiple function room can be turned into a guest room by pulling out a hidden bed.



10



11



### **Summer lotus flowers flow over ponds**

Each bedroom has two independent zones divided by a sliding door which leads to a closet and bathroom. The master bedroom enjoys an energetic spirit and is surrounded by strong colors. A special motif wall paper with visible lotus branches and leafy veins gives a strong message of spouting energy. Several art works decorate the space and add color to the space.

### **Autumn chrysanthemums pop up among wild grass**

A multiple function room represents autumn. Even though it is equipped with very few furnishing pieces it can be converted into a guest room, tea room or entertainment room. The earthy colors visualize how color changes from summer to autumn. Images of chrysanthemum flowers on the wall ushers in the cold wind dyeing the color from green to yellow.

### **Winter plum flowers bloom on branches**

The second bedroom represents winter. Blue and white signify the first snow on a chilly day. The wood floor adds warmth to the room and details in color provide a visual hint as the season quietly moves from fall to winter.

Wagashi is an exceptional project for a sample home. Each floor houses only one unit, and has the most unique design. The unit now is waiting for someone, lucky enough, to buy it and move in.



12. 最後來到冬日的次臥，以藍天、白雪為主調，搭配木材溫潤手感，迎來溫暖的冬季風貌。13. 與多功能房相隔的牆面，改以深藍色調，並將擺飾、地毯換上如冰如雪的色澤和紋路。14. 房內演繹著秋天轉紅的樹葉、熟透的穀禾與棕色木皮，在溫暖中又夾帶絲絲寒意。15. 浴室。

12. The second bedroom represents winter time but is warmed by color and material. 13. Second bedroom and a blue color partition wall immediately adjacent to the multiple function room. 14. Autumn room reveals an autumn air in warm and earthy colors. 15. Bathroom.

## 建材分析 Material Analysis

1. 設計師使用抽象畫作、大理石融合玉結晶的石材、荷葉壓製而成的壁紙等家飾建材，為空間點綴四季氣息。2. 公共空間的地面使用燒面花崗石，散發溫潤感的地面，搭配大量木材，讓在冬季完工的和果子多了一份暖意。

1. Abstract painting, marble in crystal formation, special wallpaper, all give a hint of seasonal impressions. 2. Rustic surface granite floor and wood partition give the main living space a sense of intimacy.

## 溝通重點 Communication Note

1. 為讓業主對於完工的樣貌更具體的想像，設計團隊在設計初期會使用 3D 模擬圖，不僅展示設計，連家具擺飾皆 1:1 呈現。2. 雖然和果子為實品屋，但設計師藉由拉門的設計讓空間可以自由變化，並將收納藏於無形之中，為未來的屋主保留居住的機能。

1. To communicate with the client the design team built a 3D modelling image with precise furnishing details and material simulations. 2. This sample home project uses many sliding doors to allow layout alterations to meet future demand.