

Lion Travel - Scholar's Lounge

雄獅台大人文空間

設計者「大牆演繹設計 / 胡碩峯」
參與者「莊曜賓」
攝影者「Sam」
空間性質「旅遊門市與講堂、咖啡館」
坐落位置「台北市羅斯福路三段」
主要材料「黑鐵、木棧板、水泥板、沖孔鋁板」
面積「54坪」
設計時間「2011年8月至10月」
施工時間「2011年11月至2012年4月」

Designer「Shyr-Fong Hu」
Participant「Y. P. Zhuang」
Photographer「Sam」
Category「Lion Travel agent office, lecture hall, coffee shop」
Location「Taiwan University, Taipei」
Materials「black iron, wood plank, cement board, perforated aluminum board」
Size「179m²」
Design period「August - October 2011」
Construction period「November 2011 - April 2012」

胡碩峯

學歷 美國哈佛大學建築暨都市設計碩士 1986
現職 胡碩峯建築工作室負責人 1991~Now
大牆演繹設計有限公司 2002
經歷 臺灣大元建築事務所
美國波士頓ARC建築師事務所設計師
1986~1991
淡江大學建築研究所兼職副教授 2000~2001
中原大學室設系、建築系 1989~1995
著作 可見的烏托邦 (建築旅行文集) 2004
給未來的訊息-城市建築手記 II
(建築論述) 2002
大牆演繹-城市建築手記 I
(建築論述) 1996

SHYR-FONG HU

Education/Master of Architecture in Urban Design (MAUD) 1986 · Graduate School of Design, Harvard University, U.S.A.
Professional/Shyr-Fong Hu Design Studio 1991-Now
History Architectural Design Department Experiences/ARTECH Inc., Taiwan
Architectural Resources Cambridge, Mass. U.S.A. 1986 · Taipei City Government 1996
Assistant Professor/Department of Architecture and Department of Interior Design · Chung-Yuan University · Department of Space Design, Shih-Jen College 1989~1995
Publications/- "Observation of Cities and Architecture" III by Garden City Publishers, 2004



編按

延續著數年合作的極佳默契，設計師胡碩峯一直扮演著《雄獅旅遊》品牌轉型過程裡的空間再造重要幕後推手。在催生結合旅遊門市、雄獅欣講堂、Lion Café複合式經營概念的這個新創空間，同時也是《雄獅旅遊》邁向文化創意、生活產業的新嘗試。

基地位於台北市充滿人文氣息的羅溫汀地區，這棟60年的老建築，如何與在地文化紋理連結，同時又在品牌的經營與精神上延續，賦予「文創」的新生命。正是設計師胡碩峯心思所在，希望以更新的設計觀點切入舊建築的再詮釋，成功賦予空間獨創的形貌。採訪「周巽莉」

概念一 · Re-Built

這棟老建築數十年作為不同商業性質空間，經歷不斷裝修變載，外觀早已看不出原來建築的狀況。胡碩峯將之前麵包屋的皮層拆除後，才赫然發現這棟建築的原型，並非視覺所見的透天厝，而是一棟兩層樓以及夾層的斜屋頂舊房子。

在看見建築原型所裸露的木結構系統，以及斜屋頂夾層形成有趣的挑空空間之後，設計師遂放棄了原本的設計圖，重新針對這個「裸露」的舊建築架構，思索如何以更具包容性的設計觀點重新Re-Built，詮釋出超越現代主義而兼容的獨特空間經驗。

於是，設計師將原有建物表層除去，透過保留下老磚牆及樑柱，在建築外觀的重新整裝以及內部機能的整合再利用，融合建築殘存的痕跡，使其能共存於新的空間框架內。在此，為了強化建築本身以及樓層內部的穿透性，胡碩峯以最喜愛的藝術家Oteiza一件金屬雕塑作品的型態作為發想，重新賦予建築一個「Urban Form」。同時將騎樓上方的樓板拆除，讓騎樓形成一個挑空，強化了二樓講堂與一樓、街道之間的穿透性，透過刻意打開的立面框景，讓內外視線可相互滲透，連結戶外樹影與街景，也讓這棟建築以設計作為都市地緣策略的地標建築，有了與城市對話的嶄新樣貌。



1. 建築外觀夜景。2. 建築正立面夜景。3. 一樓騎樓與二樓挑空關係。
1. Main street front night view 2. Street front night view 3. Void opening between the first and second floor



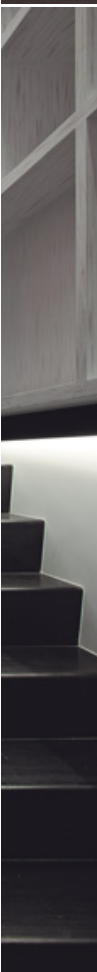
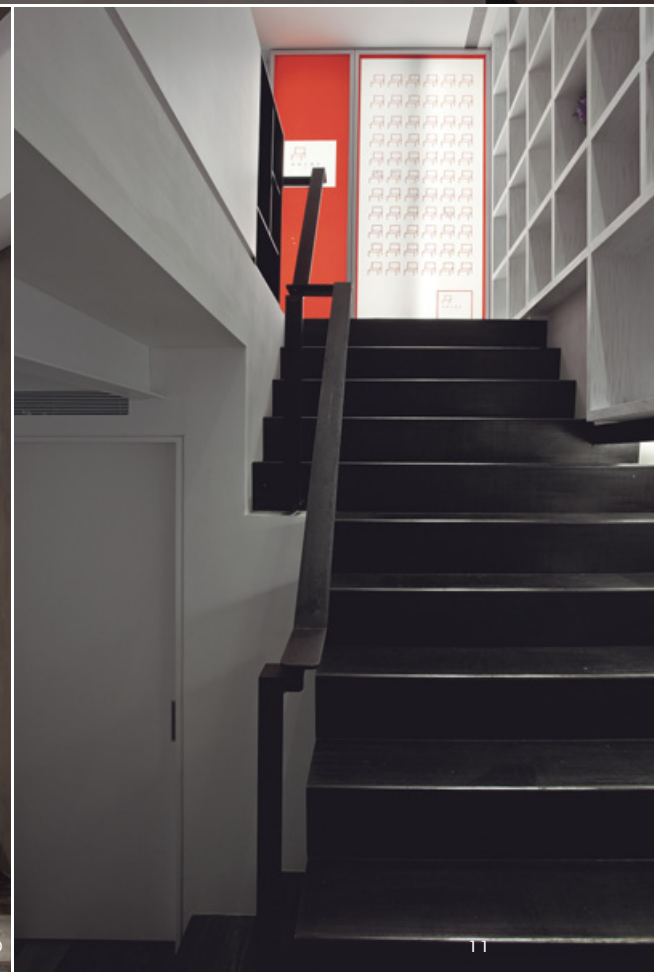
概念二 · Re-design

內部空間部分，由於該空間調為LifeStyle的複合型文化創意空間，設計師除了延續建築「舊」的元素與精神，更注入新的創意觀點進行空間的「再詮釋」，不僅保留原位於上方夾層的五根實木橫樑結構，同時刻意留下原有一道殘破的磚牆，經過數道工序修補後，再漆上白漆。另一邊的立面除了三道開口，保留了自沖孔板引入的光線外，也利用棧板刷白漆作為表層，呈現奇妙的視覺對比，引領到訪者在空間裡感受在建築表象之下所隱藏的過去歷史與文化厚度。

有趣的是，設計師刻意在棧板上貼上許多城市的名稱。若仔細讀來，才會發現這些城市其實是出自卡諾維爾的著作《看不見的城市》，而非真正可到訪的城市。而這是刻意呼應著品牌在此一講堂所投注的文化意涵，除了展現雄獅企業一貫的白色空間基調外，也透過材料系統的細膩處理賦予空間更多紋理質地，豐富了該品牌空間作為文化知識傳播平台的核心理念。

4. 建築外觀。5. 建築正立面。6.7. 騎樓挑空與都市街景關係。
4. Exterior view 5. Main façade 6.7. Arcade and its relationship with the existing city fabric





Designer Shry-Fong Hu has worked with Lion Travel for a long time. In recent years, Hu has played an important role in helping Lion Travel make the shift from a single travel agency to a more active culture promoter. The Scholar's Lounge near Taiwan University is a central program for Lion Travel as it houses the Lion Travel Lecture Hall and Lion Cafe. The place is a critical move for the Group and it is a bold investment to create a culture business. Located inside the dense city fabric full of scholar's footprint near Taiwan University, Lion Travel's new branch is a sixty year old house. The design started from as a renovation which then added new energy to the space.



Design Concept 1 : Re-Building

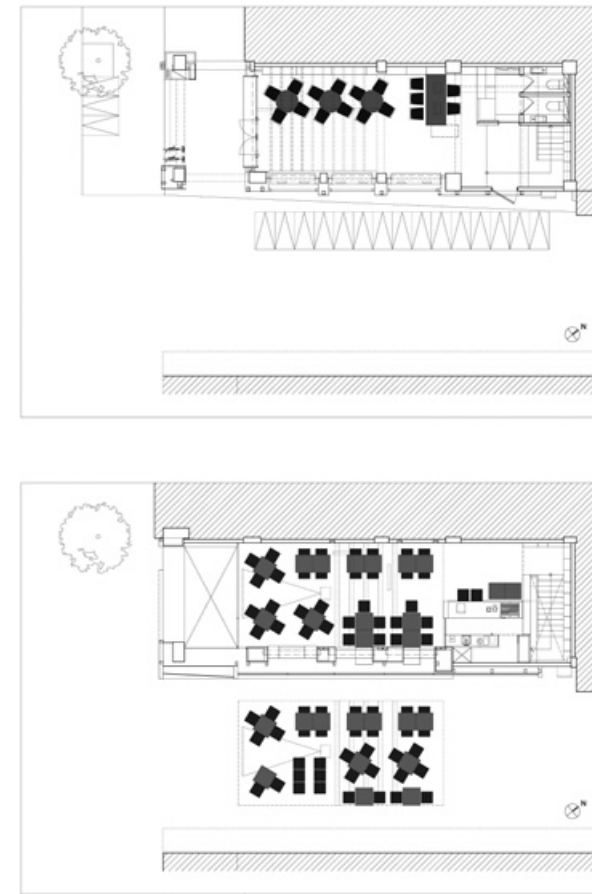
This old house had been used in the past for many purposes. Its previous tenant was a bakery store and the building had been covered up fully with an added skin for marketing purposes. When Hu tore down the skin he surprisingly found that the existing structure was not a typical flat-roof house but rather a house with a pitched roof and a mezzanine floor. When the preparation work was underway, Hu watched as the timber roof framework gradually exposed itself to his eyes. He abandoned his previous design and made a change to integrate the space with the exposed elements. Almost every piece of the skin attached to the existing building was removed and a new skin was built. Some brick walls and old timber columns were retained while Hu carefully integrated the old with the new structure. To enhance the dynamic energy of the internal space, Hu installed Oteiza's metal art work in the center. This piece gives the court a centipede-like power like a traditional Urban Forum. The existing arcade on the street front also saw a big change as its upper floor was removed to form a more spacious public space open to pedestrians while increasing the visual height of the second floor lecture hall. This urban strategy results in a tighter relationship between this individual structure and the city fabric.

Design Concept 2 : Re-design

The Interior retains a strong sense of time as it marks its paces to the future while it still exhibits its past traces. The old exposed brick walls were carefully preserved and painted white. Three openings appear on the main wall which separates the exterior and interior, providing a mystic light infiltrated through perforated aluminum panels. Rustic wood panels painted white converse with the aging brick wall and the exposed timber structure on the top forms an impression coated with the thick air of nostalgia. While the passion of the past did not fit into a precise time and spatial memory the emotion of an unknown time and space soak into the visitor. On the surface of the wood panels, there appear many inscribed letters. They are all city names taken from Italo Calvino's famous book Invisible Cities. This is what Lion Travel mission intends to achieve, the sense that travel is a journey of new discovery and Lion Travel's Scholar's Lounge will develop into a hub to connect the people who look such enlightenment.

8. 自二樓鳥瞰樓梯全景。9. 由樓梯望向二樓講堂空間。10. 一樓通往二樓的樓梯平台。11. 通往二樓的樓梯台階。12.13. 「Urban Form」演進過程的概念模型：以設計師最喜愛的藝術家Oteiza一件金屬雕塑作品為發想，重新思考建築與城市地緣的關係。
8. A view from the second toward staircase 9. A view from the staircase towards the lecture hall 10. Landing from the first to second floor 11. Staircase and flight design 12.13. Artist Oteiza's metal sculpture stands in a position like a monument in a city forum





15

14. 一樓門市配置圖。15. 二樓平面配置圖。16.17. 二樓座位區，保留了原有磚牆，再漆上白漆。
14. Plan 15. The second floor seating zone 16.17. Seating zone on the second floor and white color brick wall

業態概述&空間條件

空間名稱	雄獅台大人文空間
餐飲類型	LifeStyle的複合型文化創意空間
商圈環境	台大公館商圈
主要客群	一般群眾、網路社群群眾
空間架構&特色	延續建築「舊」的元素與精神，再注入新的創意觀點完成空間的「再詮釋」，引領到訪者在空間裡感受在建築表象之下所隱藏的過去歷史與文化厚度。

Business program and Spatial layout

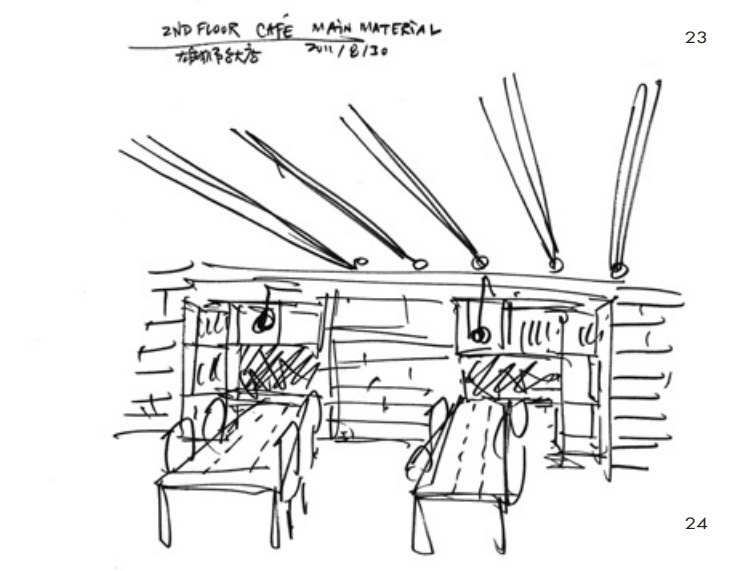
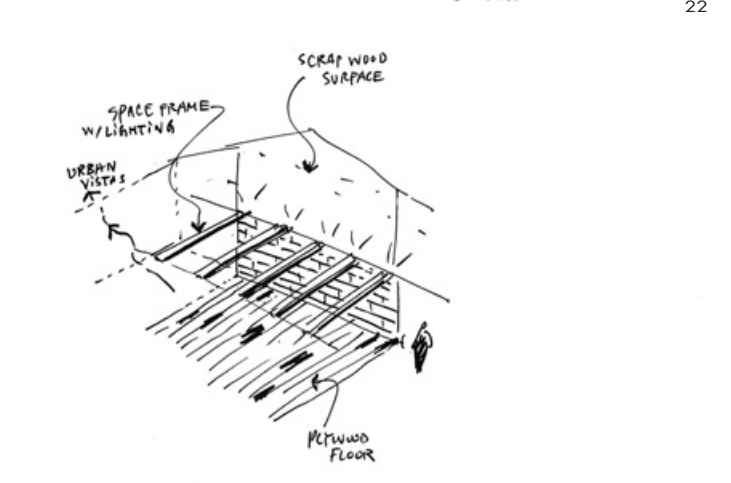
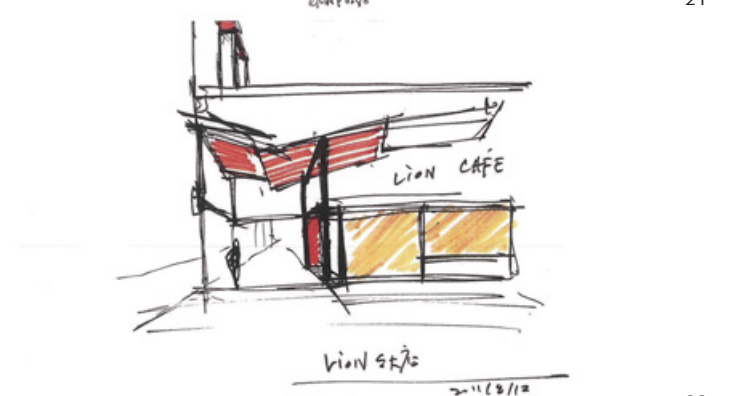
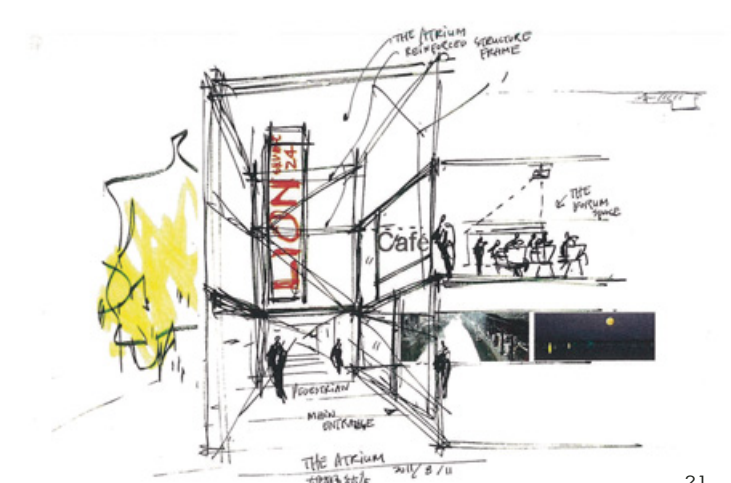
Name	Lion Travel Scholar's Lounge
Category	Life Style Culture space and Social Hub
Location	New Taiwan University, Taipei
Customers	Not specified, The Public, community residents
Spatial significance	Old elements are carefully kept in dialogue with new additional elements. History is retold in a creative way.



16



17



18. 立面利用棧板刷白漆作為表層，開窗部分則可自沖孔板引光至室內。19. 座位區立面與開窗部分的材料搭配細部。20. 二樓座位區與挑空關係。21. 設計師手稿-1：騎樓挑空空間與二樓關係。22. 設計師手稿-2：騎樓挑空空間的天花折板設計。23.24.設計師手稿-3：二樓咖啡廳的材料系統。

18. White color wood panel and window that introduces natural light to through perforated panels 19. Details show window and seating zone 20. Seating zone and void space 21. Design's Sketch: The Atrium 22. Designer's Sketch: The Atrium and Ceilling. 23.24. Designer's Sketch: 2 nd Floor Café main material.

21

22

23

24

18

19

20