

# Combination of the Somber and Cheerful

## 沉輕合璧

設計者」好室設計 / 陳鴻文

攝影者」嘿！起司

空間性質」住宅

坐落位置」台灣

主要材料」花崗石步道磚、仿舊實木雕花門、土質特殊塗料、鐵方管烤漆書櫃、水泥 PVC 無縫地坪、煙燻橡木、雞翅木實木皮、夾板染色

面積」60 坪

項目年份」2019 年

Designer」HAO Design/ Ivan Chen

Photographer」Hey!Cheese

Category」Residential

Location」Taiwan

Materials」granite footpath brick, imitation vintage solid wood engraved door, special soil coating, iron squared tube baked enamel bookcase, cement PVC seamless floor, smoked oak, wenge wood solid bark, plywood dyeing

Size」200m<sup>2</sup>

Project year」2019



在「沉輕合璧」這個案子中，陳鴻文設計師企圖揉合東西方元素，並將沉斂與簡約的風格相容於空間中，交織出獨一無二的韻致。

本案男主人喜愛帶有濃厚文化底蘊的中式風，而女主人則喜歡簡約輕巧的北歐風，如何將兩種截然不同的視覺風格融合，成為好室設計首要面對的難題。陳鴻文設計師表示，他期望達成「新中式」的平衡，所謂「新中式」，指的是將東方氣息視為空間基底，再套入西方休閒氛圍；對此，他從色調與家具軟件著手，企圖勾勒出獨特卻舒適的住宅韻味。另外，業主亦希望能在家中角落為兩個幼女打造一處專屬空間，有豐富的藏書、小臥榻區可活動與享受日光，甚至還有一座與書櫃結合溜滑梯，不僅滿足機能需求，更讓她們的幼時生活充滿歡笑與回憶。

### 當東方風格碰上西方元素

原始格局有一大書房，導致位於正中心的用餐區採光明顯不足，但因業主職業關係，有眾多書籍需收納，故書櫃是不可缺少的物件，陳鴻文將客廳及書房打通，不僅放大原先較為封閉的公共空間，也能做更彈性的運用，隔間打通後顯得突兀的中央大柱，則以傳統中式「宅院」的形式包覆，並修飾為拱形洞門，創造進出的儀式感和文化餘韻，也藉此弱化柱體的立面與壓迫；考量到基地靠窗處採光條件優良，視野也不錯，遂設置臥榻，並將其從落地窗邊延伸至後方書櫃處，成為家人休憩或相聚的一方天地。入門三片實木窗花採特殊舊化處理，使門板呈現出老件獨有的溫度，玄關的石材地坪中和了屏風的強烈中式古典色彩，注入些許休閒自然感受；客廳牆面塗鋪土質色調的仿水泥特殊塗料，構築空間的沉穩暖色調，設計師認為中性色調有助於適切展現中式與北歐風格各自的特色，又能彼此相容，塑造出協調的視覺畫面。用餐區的隱藏式門片讓其成為一個完整獨立的空間，也因為此區靠角落，自然光線較為缺乏，陳鴻文遂將整片底牆塗抹墨碧綠色，暗色調搭配大量雞翅木等木材，營造與客廳相異的感受，無形說明場域的功能轉換。

客廳後方整牆書櫃中巧妙的藏了一座溜滑梯，設計師提到，由於書櫃尺寸偏大，需先在工廠製作完成後，再送至現場拼裝，好似組裝道具般，每塊層板下方有兩個活動棒，放上層板即是大人的收納空間，將層板撤下，放上溜滑梯板則變成小孩的遊樂區，滿足小朋友奔跑、攀爬的慾望，組裝式夾板可自由更動層架排列的特性，讓機能在童趣和實用間不受限。

Ivan Chen



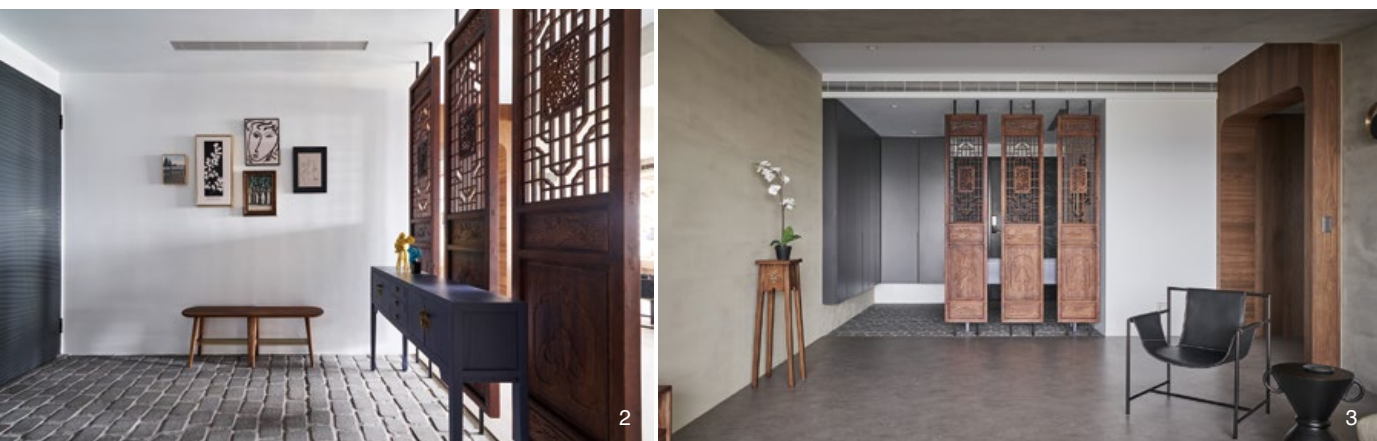
好室設計 / 陳鴻文  
好室設計創立於2013年，提供住宅、商業、辦公空間規劃整合與工程管理，設計團隊期待生活應該是一種美學的表現，一種態度，希望可以將美好的生活體驗設計在空間中，讓人與空間多了對話與互動。好的空間不見得要豪華，在好室的設計中，你會看到空間與人有更好的互動方式。

HAO Design / Ivan Chen  
HAO Design expect living to be in an aesthetic form which is also an attitude. We try to apply beautiful life experience to design and to optimize the interaction between users and spaces. A good space is not necessarily luxurious. Within our design, you can see the better life style and feel the warmth at the interiors. It is people that complete the whole story and experience the interiors-House. Hence, we oftentimes have interiors warm by keeping old objects and words.

1. 有鑑於客廳已有多樣中式風格的裝飾性元素，故主燈選擇具現代感的款式，與屏風有著對比的意趣。

1. Lighting fixture has a unique shape that counterbalances the dominating Chinese impression in the living space.





2. 迎賓玄關面積充裕，帶來大器之感，地坪的石材則注入一股休閒自然氣息。3. 入口以三片經舊化處理的實木窗花作為屏風，開宗明義點出空間的中式精神。4. 以中式建築常見的圓頂拱形造型，修飾中央大柱。5. 沙發著重於靈活變化性，不設限的使用方式為生活帶來更多彈性；另搭配由陸希傑為 Poltrona Frau 設計的扶手椅，增添空間的精緻度。6. 平面圖。

2. Living space is very spacious and the marble floor set a continuous visual flow. 3. Three motif windows are used to form a partition screen to separate the living space and lobby space. 4. A dome system modifies the main structure elements in the living space. 5. Non-fixed sofa offers a flexible arrangement in space. An expensive designer chair quietly sits in a corner giving the impression of luxury. 6. Plan.

### 軟裝的鋪陳，豐厚住宅面貌

主臥的湛藍色調奠定了優雅的氣質，陳鴻文解釋，湛藍色系是從業主所收藏的唐卡（西藏手工刺繡工藝品）中得到靈感，櫃體採夾板加工染色，突顯材質的紋理，也增添空間的變化層次，床頭整塊自然邊原木造型大板呼應業主豪放而低調的個性，木頭的自然肌理及香氣也疊增質感；牆面的清水模樂土塗料作為空間背景，串聯起地面、床頭板、皮革燈具、刻意碳化處理的邊几等軟件，整體雖為同個色系，卻採用不同材質來描繪室內畫面。小孩房以較為活潑粉嫩的配色呈現，大塊的熱帶植物圖樣壁紙活躍了空間，而床頭的圓弧造型與類似早期貝殼線條的繡布則帶來些許復古味道，圓滑曲線的形式亦能表露出小朋友稚趣的性格。

設計師爬梳業主夫妻各自喜愛的元素後，擷取中式線條和材料作為家具結構，混搭簡約、低飽和度的色彩或軟裝，精準

拿捏傳統和現代之間的比例，例如餐桌桌板的胡桃木配上金屬中式窗花鏤空桌腳，捎來沉穩卻輕巧的氛圍；客廳沙發則講求靈活度，不讓傳統的高背模式侷限了使用模式，另擺放一張由知名設計師陸希傑替義大利家具品牌 Poltrona Frau 打造的「Ming's Heart 明心見性」扶手椅，透過極具特色和設計感的單品，強化空間精緻度，也反映業主的品味。好室設計以「以古融今」的手法詮釋具中式韻味的物件和元素，並將之與北歐簡約意象結合，藉由匠心獨具的構思，把一家人對住宅的憧憬與想像化為真實，成為包容各式生活劇情的場所。採訪 陳映蓉







7



8

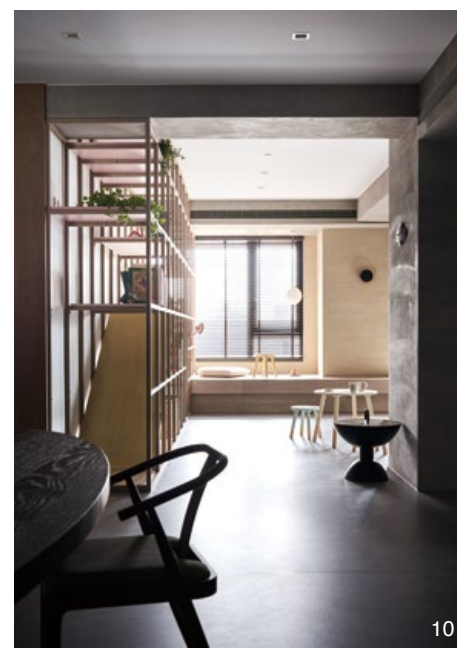


9

7. 客廳牆面的仿水泥特殊塗料，其質樸的中性色調能包容各式設計語彙。8. 藉由活動棒與層板的變化，讓「滑梯書櫃」同時滿足實用與童趣的功能。9. 設計師打通客廳與書房，公共區域的動線更為順暢之餘，也明亮了整體感受。10. 基地視野條件優良，遂在窗邊設置臥榻區，可作為親子共同活動的小天地。11. 餐廳的胡桃木桌板與金屬桌腳交織出沉穩卻輕盈的畫面；玻璃燈球的黃光彷彿小燈籠般靜止了時間。

7. Faux exposed concrete surfaces embrace the living space. 8. Side bookshelf is fun but functional. 9. Reading space completely mingles with the living room. 10. Long sofa corner against the window allows quality space for family gatherings. 11. Walnut wood table and metal details form the fine texture dining table.

The master of this property likes the traditional Chinese style while the mistress likes the light and simple Nordic style. They hope to build a unique playground with a slide for their two daughters, which is also in line with the long-term use of the space. The three-panel solid wood engraved screen at the entrance is of classic Chinese style. The specially aged door panel evokes a unique vintage feeling. The stone materials selected for the atrium floor make the space more leisurely and natural so that the screen does not appear too somber. The walls of the living room use an earth hue imitation cement special coating to make the entire appearance warm in color. The lively lamps and the couch design match with the white ceiling to maintain a modern leisure sense of the space. The wall bookcase is ingeniously designed to hide a slide. It is both a storage space for adults and a complete play area for children. The assembled plywood can freely change the arrangement of shelves so that the function can be freely selected between children's interest and practicality. The main bedroom cabinet is dyed to highlight the unique large pattern of the material. The blue color has evoked a somber and elegant temperament; the solid wood headboard reflects the master's boldness and low key attitude. The wall surface is made from béton brut Lotos coating. From the wall surface to the ground, to the headboard, even to the leather lamps and the deliberately carbonized hems,



10



11





12



13

12. 用餐區整片的墨綠色牆面無形說明場域機能的差異。13. 門片皆採隱藏式設計，乾淨俐落。14. 小孩房床頭以圓弧造型與條狀繡布塑造復古氛圍。15. 熱帶風情的壁紙活躍了空間節奏，也彰顯小朋友們的活潑個性。16. 設計師擷取「唐卡」中常見的湛藍色作為主臥調性，並採夾板染色方式，突顯紋理與層次。17. 床頭的原木大板擁有自然的紋路與香氣。

12. Dark green wall transits a tranquil comfort for dining moments. 13. Door pieces are installed by invisible technique. 14. Children's room and its cute bedroom design. 15. Tropical passion motif wall paper dominates the interior ambience in children's room. 16. Color system was derived from Thang-ka, a Tibet style religious image. 17. Headboard is a single piece of solid wood with a special natural scent.



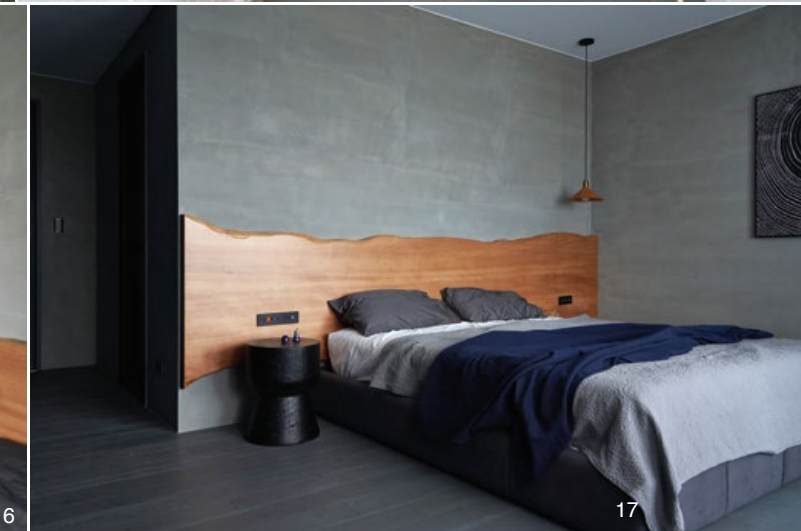
14



15



16



17

it can be seen that although the overall space is of the same hue, different materials are used to show a gradient change between materials. The large tropical flora wallpaper in the children's room enlivens the space. The arc shape of headboard design and the stretchy cloth echo the external vintage elements. The central pillar is decorated as an arched portal in the traditional Chinese architecture residential style "", which shows the passing down of culture and aesthetics. All the doors in the dining area are concealed. The entire dark green foundation wall makes it look like a complete and independent space. In addition to color, there are many Chinese character elements in the details of the furniture: The walnut color of the table brings out its somberness, while the metallic Chinese style screen table legs bring out its lightness. When the lamp is not used, it seems to be a modern piece but when it emits yellow light, it looks like a traditional lantern.

We use exquisite iron pieces and rainbow colors to show children's delights and Nordic simplicity in the details. We use traditional Chinese structural symbols, paying attention to the color of accessories and then combine the traditional charming elements into modern aesthetics to present them in a refined way. We combine the traditional elements with western modern leisure atmosphere to strike a New Eastern style balance.

#### 建材分析 Material Analysis

1. 空間大量使用中式風格常見的木材語彙，並在細節處輔佐精緻的鐵件、低飽和卻繽紛的色彩等，達到「新中式」的平衡。2. 設計師依照場域使用狀態的差異進行光源配置，客廳主燈的現代感線條有效中和空間的中式情境；小孩的活動場合採主燈式的吸頂燈，光線擴散均勻且柔和；餐桌玻璃球燈的金屬材質，則與餐桌桌腳相呼應，點亮時猶如小燈籠般，抬升寧靜感受。

1. A new Chinese style was obtained through the use of wood and fine work metal members which are painted in bright colors. 2. Lighting quality is deployed according to site specific ideas; lighting in the living room creates a counterbalancing effect of regional color; bedroom lighting is gentle with no intimidating brightness; lighting in the dining space transmits an impression of gathering peace.

#### 溝通重點 Communication Note

1. 如何融合男女主人各自喜愛的中式與北歐風格，是陳鴻文設計師碰到的首要挑戰。2. 業主希望入口具有大器迎賓感，因此本案玄關採大面積設計，鞋櫃等收納機能亦有完善規劃。3. 由於家中有眾多藏書，且女主人也想為小孩打造專屬的玩樂區，故將書櫃與溜滑梯結合，需考量到組裝細節、實際收納擺飾的需求，與結構承重量等方面。

1. Client demanded Chinese and Nordic styles be mixed in this home design. 2. Client wanted to enjoy the large living space with a clean-cut surface surround. 3. A shelf housing the clients' collection of books mixes with a slide to entertain their young kids. The structure of the shelf was carefully planned to avoid any accident happening.