

Belonging

歸屬

設計者」 瓊奕國際設計工程有限公司 / 方信原

參與者」 洪于茹 吳竺凡

攝影者」 鄭鼎

空間性質」 住宅

坐落位置」 台灣

主要材料」 鋼刷橡木皮、不鏽鋼板烤漆、中空板、義大利比利時進口塗料、工字型鋼、大理石、海島型木地板、冷噴漆、特殊水泥

面積」 1樓 22.7 坪、2樓 18.2 坪

項目年份」 2020 年

Designers」 Wei Yi International Design Associates / Shin-Yuan Fang

Participant」 Teresa Hung, Cindy Wu

Photographers」 Ding Jheng

Category」 Residence

Location」 Taiwan

Materials」 texture veneer, stainless steel, hollow board, Imported paint, I shaped steel member, marble, wood board, paint, special cement

Size」 115.7m²

Project year」 2020



Shin-Yuan Fang



瑋奕國際設計工程有限公司 / 方信原
成立於 2003 年，設計師方信原畢業於國立藝術專科學校及中原大學室內設計系研究所碩士，曾任職於大元聯合建築暨設計事務所及李肇勳室內設計顧問有限公司。常透過城市旅遊的方式，進行城市人文的觀察及研究。事務所致力於將低度設計運用於各項規劃，並探討人們在低度的空間裡，各層面所產生的影響。
公司作品多次登上國內外知名媒體，如德國《PLACES Of Spirit》、義大利《ELLE DECOR》、義大利《Marie Claire Italy》、紐西蘭《Home Living》、俄羅斯《Interior the best》等等刊物，並獲得如台灣 TID Award、香港 APIDA 獎、中國 IAI 獎、英國 WAF INSIDE Awards、德國 iF、德國紅點、德國 German Design Award、義大利 A' Design 等國際大獎。
於設計上持續以現代主義、宋代美學及侘寂文化為架構而成的低度設計為主軸，將文化、藝術、環保等相關元素，整合運用於生活及空間的設計中。

Wei Yi International Design Associates / Shin-Yuan Fang

Shin-Yuan Fang received an undergraduate degree from NTUA and master degree at CYCU. He worked for several prestigious design firms and started his own design firm in 2003. He has travelled extensively and loves to transform his travel experience into his design works.

Wei Yi's interior design works consistency appears in famous international media such as 《PLACES Of Spirit》, 《ELLE DECOR》, 《Marie Claire Italy》, 《Home Living》 and 《Interior the best》. Many works have won design awards such as the TID Award in Taiwan, APIDA Award in Hong Kong, IAI Award in China, WAF INSIDE Awards in England, iF in Germany, Reddot and German Design Award, etc. Shin-Yuan Fang prefers a modern style infused with Chinese and Japanese aesthetic philosophies; he loves to use eco material in artistic arrangements.

習以為常的生活點滴，精彩了我們的日常；而「家」，就是我們最重要的避風港。撇除過多的理論枷鎖，恬然自得的調性塑造了舒心的感受，對細節的專注則展現出設計者縝密的心思。

日常，看似平淡無奇，卻是與我們最接近的一環，而住家，就是展演包羅萬象日常的舞台，更是令我們最為舒心的歸屬地。方信原設計師表示，他並未賦予這個案子過多嚴肅或理論性的設計論調，卻是個回歸設計初心的作品，由業主對住宅的想望作為出發點，設身處地的替居住者著想，最終成就出這個雖非轟轟烈烈，但卻恰到好處、予人平衡、舒適之感的生活容器。

基地位於台北市的精華地段，為兩層樓空間，建商原始給予的格局將樓梯置於居中之處，且因 1 樓配有兩間廁浴，在隔間佈局上稍嫌零碎且無法將機能連貫。方信原提到，此為業主首次請設計師為住宅做有系統的規劃，在生活習慣和機能方面能十分明確的表達需求，但對於氛圍與畫面勾勒的敘述，卻較為籠統模糊，於是設計團隊先針對空間結構進行調整，將樓梯移至外圍，並取消原先緊鄰樓梯的浴廁，讓被細碎切分的面積得以進行整合，改作為開放式料理台與餐廳功能；設計師說，在這個新建立的場域中，父母與一雙女兒可於此談心、製作糕點等，對一家人而言是情感連結不可或缺的空間。

看似平凡無奇，實則細膩不凡

住宅設計的呈現，通常記錄著居住者的生活模式，以及文化上所產上的印記，「真實展現出一家人的日常軌跡」是設計團隊切入的重點。方信原提到，居住空間的面積雖有限，但對生活的想像卻是無限，在滿足硬體機能之餘，如何使場域多變化的彈性，與個人隱私之間的平衡得以兼顧，讓家成為彼此互動且持續成長的重要場所，是他近期在思索的課題；「歸屬」這個案子，乍看之下形式恬淡，細節處卻蘊含著設計者的細膩心思，而這些細膩，讓空間滿溢著比例、對稱等結構性美感，例如電視與黑色櫃體之間的關係，設計師把牆面視為畫布，並適切地將塊狀體布於其中，使電視與牆體不再只是單純的機能性元素，而是成為畫面組成的要角之一。而開放式客廳則藉由業主自行購入的 LC4 躺椅、Cassina 單椅等軟件單品架構出精緻質感，方信原解釋道，設計其實不一定得有著一鳴驚人的手法或花俏張揚的表象，應該是要專注於比例、線條、材質等細瑣之事的融合，才能為居者創造出協調的感受。

1. 半旋轉門以蜂巢板搭配玻璃，設計師賦予常見材料更多發展面貌，不限縮可能性。

1. PC board opaque door contrasts with a totally transparent dividing glass wall.





色調單一且序列嚴謹的書房，是設計團隊為居住者保留的喘息空間，不以過多元素進行干擾，而是將此處留給業主於日後自行鋪陳內部色彩，使其成為收納家人歡笑與記憶的一方天地，方信原以「朦朧又通透」的概念形塑框架，半旋轉門片運用隨手可得的材質－PC 中空蜂巢板，搭配具質感的玻璃，擷取塑料的肌理質地，再藉由玻璃消弭塑料容易予人的廉價感，形成有趣的對比；因著材料特性，白天時空間不會過於封閉，有效解決場域分割而產生的擁擠感，夜間打燈後則會隱隱約約透出光影，帶來曖昧的詩意。

飄浮結構，造就了優美

1 樓開放場域運用融合和模糊的手法界定，靠近階梯的電器櫃以工字鋼結構將其懸吊而起，使玄關和餐廚區不會因為壁面而有阻隔，亦提點出空間的立體與層次感，這種細微變化雖不易察覺，卻深刻地烙印在業主的生活之中。而串聯上下樓層的飄浮階梯可說是空間的重要元素，方信原利用輕薄方式，表達出東方文化的形體之美，看似薄片的階梯踏面，實則內含精準的結構計算，扶手直接置於牆面中，並在溝槽內藏入光源，作為指引之途；再透過片狀構造的比例切割線帶來穿透性，不僅弱化量體的壓迫感，也讓階梯成為視覺焦點。

循著以鋼板架構而成的輕薄階梯向上走去，黑、白對比調性的私密空間映入眼簾，這裡是家人的休憩場所，書櫃的立面序列規劃，延續著樓下俐落的秩序，中央的門字形結構基本上皆不做鏈結，透過縫隙營造脫開效果，藉此呼應階梯的分割線條，整體採用一致的設計語彙。臥房則以淡灰藍作為基底，輔以木質的溫潤，使得私領域溫馨且穩定的情調油然而生。誠如方信原設計師所言，家，記錄著我們所有的細節，承載著我們的一切；雖然平常，卻也是最重要的歸屬。採訪 | 陳映葵

2.1 樓開放場域將客廳、餐廳、書房融為一體，單純的硬體並配上甚為活潑的家飾，使空間產生對比的意趣。

2. The first floor is a large scale mingling living room, dining room and reading room as a singular whole.



3



4



5

Daily life may seem to be boring but home is the place collecting all the most true part of it's dwellers. Shin-Yuan Fang's design focused on nothing theoretical but rather how to identify the most true parts to make his client's dream come true. Fang truly believes a sense of comfort is the most essential need to be obtained in home life.

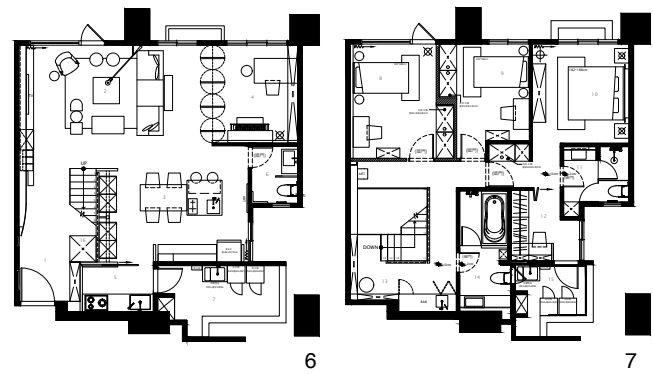
Situated in the center of Taipei, this double level new apartment suffered from a broken layout. Fang's mission was to re-arrange the plan by shifting the existing staircase location to yield a more ample space for the kitchen and open-style preparation space. The space turned an awkward corner into a gathering space for the four member family.

Not fancy but a comfortable ambience

A living space retains traces of its dwellers. Even if people live in a limited size apartment, they maintain a naive dream of about being blessed by it's physical boundaries. Fang said, that even though maintaining daily pragmatic demands is an important part of residential design it is not the only thing to be done; a living space needs to house people's desires and passion which

can be easily reduced to a design concept called “belonging”. Belonging is being mindful to how to live in a tranquility that requires the total arrangement of every furnishing element in an harmonious ways. This includes selecting the right color and the proportional layout of objects themselves. In the living room in this projects there stands a LC4 chair, a Cassina single chair, and other fine designer’s pieces not to be seen as luxurious but rather tasteful for being lived in well.

Reading room is a spot purposely left empty without extra furniture pieces. This space is bordered by both opaque and transparent materials, a door of PC hollow board and a partition made of glass panels. The contrasting materiality between the plastic PC board and crafted glass panel posts an interesting dialogue and the lights at night time create an ambiguous light flow in a poetic intimacy.



Floating structure in abstract beauty

The first floor is an open zone where all public function mix within. A hovering electronic appliance cabinet supported by I beams and cables provides visual penetration from the lobby to the dining space. This magic like object also appears in the staircase, which uses thin metal panels for the flights. Even the handrails are hidden within wall surfaces to reduce visual violation. A detail manner reinforces its resistance to gravity while the beautiful profile turns the object into an extraordinary art piece.

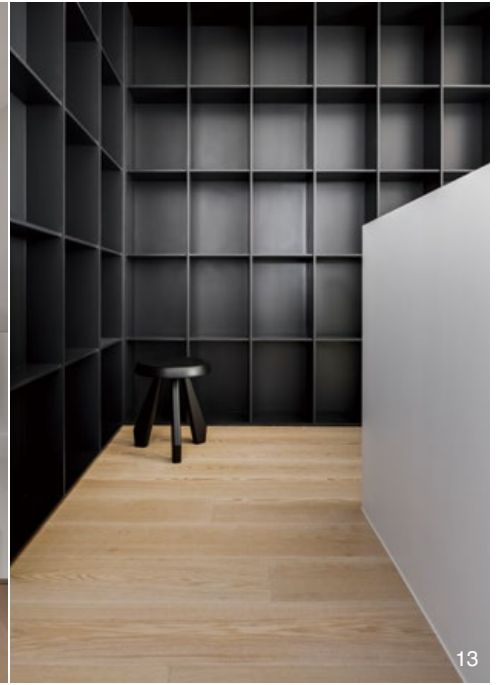
The second floor is for the private living quarters which only appear in black and white. A quarter for family gathering faces a bookshelf, that echoes the one in the first floor reading room. The master bedroom is painted in gray color and shorn in a wood floor without too much excess furnishings. Fang proclaims that home design is not about seeking stylish fancy but to keep everything that truly marks a memory of the family.

3. 將業主所喜愛的白色調運用於住宅中，形塑溫馨氛圍；經典單椅 LC4 與 Cassina 單椅則注入細膩高雅的質感。4. 純白的書房留給居住者增添生活的繽紛色彩；顧慮到各面向的使用需求，書桌為可活動式。5. 利用工字鋼結構將電器櫃懸吊起來，使得玄關和餐廚區得以產生連貫；而遠近景之間的關係亦被設計師所重視，在顏色的深淺之間強化了空間立體感。6.7. 1樓與2樓平面圖。8. 內廚區運用灰玻，保有空間的穿透。9. 設計師調整原始平面，建置出開放式餐廚區，不僅滿足業主一家喜愛料理的需求，也巧妙地平衡了1樓的布局。

3. White interior matches with humble but classic LC4 and Cassina chairs. 4. White color reading space is virtually left empty for future additions. 5. I metal structural beams support an electronic cabinet in an unusual manner. 6.7. Plan. 8. Gray color glass panel divides a space for a cooking zone. 9. The first floor plan was completely changed from existing layout to meet the actual demands for the family.







10. 連接上下樓層的階梯，輕薄飄浮的形態使其成為空間中的視覺焦點。11. 階梯踏階與分割線條相互呼應，有著理性又具韻律的節奏。12. 保留基地原始的挑空模式，並於 2 樓增設水吧和一間衛浴空間；中央片狀結構延續樓梯的脫開和輕薄，雖使用不同材質，仍有一氣呵成的貫穿性。13. 順著階梯而上，整齊劃一的書櫃立面與樓下有著異曲同工的協調。14. 以淡灰藍色為背景的主臥室。木材的溫潤為私領域營造安適感。15. 客用廁間。將光源壓制於鏡面與牆面之間，暈光效果使小而美的空間也充滿張力。

10. Staircase is shaped but its levitating formation. 11. Staircase flights are clad in a rigorous manner and good rhythm. 12. The residence maintains the existing open floor layout. 13. Bookshelf is arranged in a careful pattern to match the same style of the lower level bookshelf. 14. Gray color embraces the total surroundings of the main living room, and the floor is shorn in wood. 15. Shimmer lighting quality in the guest bathroom.

建材分析 Material Analysis

1. 軟裝多採用進口原廠家具，如 Cassina、Rolf Benz 等品牌。2. 於多處使用特殊塗料作為打底，透過溫婉的方式闡述材料本身所藏的層次。3. 以鋼板建構而成的飄浮階梯與餐廚區懸吊的電器櫃，兩者為室內注入結構之美，而穿透的手法也替空間帶來隔而不絕的感受。

1. Furnishing pieces come mostly from famous imported brand names such as Cassina and Rolf Benz. 2. Special foundation paints creates a fine texture in the space. 3. Metal pieces were used to fabricate a floating style staircase that provides a perfect tectonic dialogue to cabinets, which supported by cables hovers above.

溝通重點 Communication Note

1. 如何滿足居住者對於生活多樣性的空間需求，以及個人隱私的兼顧，是設計團隊著重的要點。2. 建商原始配置的格局造成面積被切分得過於細碎，設計師進行了平面的重整，以期創造完整的活動場域。3. 設計師取消了一樓的一間浴廁，但保留原管線，改於 2 樓新增衛浴空間，以符合居住者的生活習慣。

1.To satisfy daily life and protect privacy were the main design themes in the project. 2.The existing plan was problematic and needed to be trimmed and re-arranged. 3. The first floor bathroom was removed to yield space for a kitchen and open-style living space.