

Twin Lake Towers

雙湖匯

設計者 | 創研空間設計有限公司 / 何俊宏
參與者 | 馬昱祥 陳佑昇
攝影者 | 李國民攝影空間事務所
空間性質 | 住宅空間
坐落位置 | 台灣
主要材料 | 手工漆、石材、實木皮、金屬、玻璃、進口石英磚、
海島型木地板、義大利 Agglotech 水磨石
面積 | 40 坪
項目年份 | 2020 年

Designers | CREATE + THINK DESIGN STUDIO / Arthur Ho
Project Team | David Ma, Jimmy Chen
Photographer | Koumin Lee
Category | Residence
Location | Taiwan
Materials | paint, building stone, veneer, metal, glass, imported granite tile,
Island style wood floor, Italian Agglotech terrazzo
Size | 132m²
Project year | 2020



設計團隊為業主塑造出彈性靈活的住宅平面，使生活動線自由順暢；
單純卻極具質感的材料，佐以精緻細膩的家具軟裝，
構築出大器現代的時尚居所。

擁有一間令人放鬆且可享受生活的住所，可說是多數人投入工作的原動力；而這座居所，也是褪下各式外在形象後，跟自己進行內在對話的一方天地。「雙湖匯」一案的業主，是位個性幹練的單身女性，何俊宏設計師表示，如何在空間中表現出業主的俐落性格，並創造出靈活自由的平面，是設計思考切入的重點。基地位於台北市內湖區，為一新成屋，有鑑於原始格局中的客用衛浴被規劃在入口處正對面，壓縮了整體感受，且原有廚房偏置於後方，較不符合業主對於開闊視線和開放式廚房的期望，對此，何俊宏著手調整格局，並依循既有的管線配置，重新分配適切的空間布局，並綠化陽台厚重的女兒牆，與兩側植生牆共同營造出一處空中小花園，提供業主在綠意簇擁的環境中遠眺山景，使心緒舒暢。



場域彼此串聯，畫面井然有序

為達成業主對於空間寬敞、視線開闊的要求，設計師盡量將臨窗區淨空，不讓牆體阻斷視覺，僅在公私領域的交界處增設一面主牆劃分界線；室內整體格局通透開放，門片多採用拉門形式，讓這個專屬於業主個人享受的空間，有著更彈性且無拘束的使用模式。玄關處刻意透過懸浮櫃體，突顯出穿透效果，何俊宏提到，若是為了特定機能將場域封閉，會抹消了更改格局的意義，他認為在領域劃界上達到適度的區隔就足以，盡量讓空間維持通透感受，創造出留白的韻味，使天花板與地坪的材質得以延續，保有室內的串聯性，並強化視線的流動。材料部份主要選擇具自然感的材質，品項單純，卻極具簡約質感，例如客廳的石材主牆，物料本身自具紋理且不會過於花俏，設計團隊利用拼接手法在為牆面添些許線性分割，並嵌入金屬元素，予人視覺的律動感；此外，空間大面積塗鋪手工漆的原因，在於意圖形塑天花板和壁面一體成型的連結感，淡化兩者界線，達到放大室內空間的效果。至於整體色彩的定奪，何俊宏談到，由於業主喜愛中性的設計，他透過樸實的大地色系進行打底，並從業主鍾情的 Bang & Olufsen

Arthur Ho



創研空間設計有限公司 / 何俊宏
紐約 Pratt Institute 室內設計碩士、丹麥 DIS 建築及設計課程研究、紐約 Gene Kaufman Architect P.C. 設計師、香港商標氏設計規劃有限公司設計師，2005 年於台北成立創研空間設計。
創 = 開創力 / 創造力，研 = 研究力 / 思考力；創 + 研，為理性與感性的結合，左腦與右腦的並用，有生活的實用，有心靈的感觸，用心思考、熱情創造，希望用設計團隊對空間的看法與詮釋，提供給客戶不同的空間體驗與感受。從潛藏於基地與人物的時空背景理出脈絡，去詮釋、表述設計的獨特與專屬。不僅是美學感官的外顯訴求，更強調符合本質文化的內在精神，蘊含著對於當下生活浪潮的反思。重要得獎紀錄如德國國家設計獎、紅點設計獎、義大利 A'Design Award、香港 APIDA 大獎、日本 Good Design Award、台灣 TID Award 等。

CREATE + THINK DESIGN STUDIO / Arthur Ho graduated from Pratt Institute and studied at the DIS for architecture design program. He worked for Gene Kaufmann Architect P.C., M Moser Associates and then returned to Taiwan to establish his own design firm CREATE + THINK.
CREATE + THINK articulates the dual relationship of thinking and doing, sense and sensibility. The firm's service aim is at to quench a client's demand for a program that use spaces to create a new experience. Two factors define the team's sincere concern for design solutions: one is the unique features of a site, the other is the living style of their clients. CREATE + THINK, since its initiation in 2005 has won numerous design awards, domestically and internationally including the German Design Award, red dot Award, A'Design Award, APIDA Award, Good Design Award, and TID Award, to name but a few.

1. 設計團隊以開放式手法安排平面配置，力圖為居住者帶來寬敞不侷限的生活日常。
 2. 設計師調整原有格局，圍塑出玄關空間。
1. Free plan offers living flexibility.
 2. Existing layout of the bathroom and kitchen didn't fit the current living demand.



揚聲器中擷取靈感，發展出抽油排煙系統、櫃體開口及內側的金屬質感，另於軟件和細節處點綴亮色系，在素雅基底中，注入活潑跳躍的節奏。

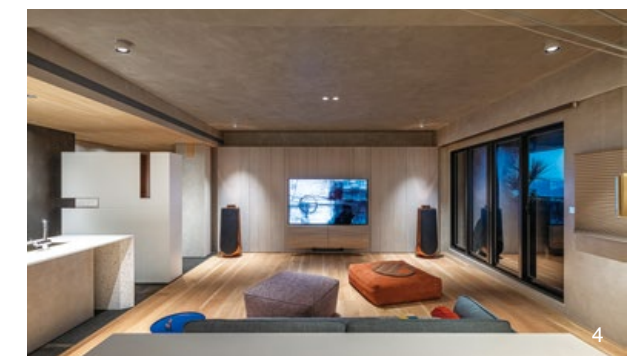
材質的運用，賦予空間無形的界線

天花板的高低變化和造型可說是本案的另一個重點。設計師說道，在美學考量下空調機械必須隱藏，但此舉多少會影響到空間高度的呈現，因此，盡量將機台集中於一側，減少天花板層次分割也爭取最佳的樓高效果；而天花板的材質差異，讓沒有明確隔牆的空間，仍有清晰的場域分區，整體框架顯得俐落明快。所有的設計起點皆依據現場條件進行規劃，客廳後方的弧形天花板造型，主要是因應原結構中既存樑柱而變通的手法，何俊宏進一步解釋道，他不希望為了弱化樑柱將天花板增厚，因此以弧線修飾基地限制，弧線的框圍也將視線延伸進主臥室，把公私領域彼此串接，不會因為天花板的高低落差而破壞了連貫性。

針對家具軟件的選配，設計師表示，業主本身對 D&L 丹意信實情有獨鍾，故多數家飾品皆選用其代理品牌，其中，Bang & Olufsen 全新推出的 Beovision Harmony 電視機，透過屏幕的自動升降與鋁製揚聲器面罩的開闔，營造出壯闊音效，十分貼合業主對聆聽音樂的講究，且商品藝術化的概念，亦與團隊的理念契合，讓軟硬體能相輔相成，豐盈了室內的意蘊，令居住者得以在此享受日常時光，編寫更多專屬於自己的日常劇本！採訪 | 陳映樂

3. 空間整體色調簡約質樸，並由 Bang & Olufsen 揚聲器的金屬質感延伸出如抽油排煙系統、櫃體開口等顏色細節；再於軟件上點綴顯眼的亮色系。4. Bang & Olufsen 全新推出的電視機，屏幕可自動升降並搭配兩片揚聲器面罩的開闔，帶來絕佳的聲響體驗，滿足業主對於視聽的需求。

3. Bang & Olufsen speaker is like a master art piece that coordinates the furnishing objects in the living zone. 4. Bang & Olufsen TV set has a dramatic up-and-down mode like magic.





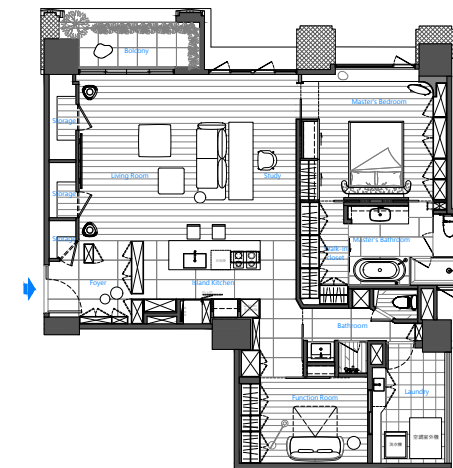
5



6



7



8

fashion view rather it is better to use furniture pieces to define each space. Using lift up cabinets in the entry testifies to the spatial liquidity when entering the residence. Most materials were selected to keep the color motif as basic as possible. A marble partition appears in a large scale layout with a variety of shiny metal members to energize the surface with a vivid rhythm. A continuous flow of earthy colors in both the wall surface and ceiling meet the client's collection of luxury Bang & Olufsen speakers and the metallic objects like the range hood pipes appear more like sculpture pieces rather functional elements.

Wise use of material in the ceiling design was crucial and defines the space in a more comfortable way. Arthur wisely concentrated the A/C utility machines in a single position to keep the ceiling at a maximal height. The ceiling has slight difference in formation so the whole single public zone has a clear visual variation that defines the space. A curved shape ceiling formation in the rear position of the living room hides an annoying beam and the curve line extends further to the private zone. The continuous and smooth flow of the ceiling extends the visual path in a harmonious wave. D&L furniture pieces compose the main collection in this residence, and electronics from Bang & Olufsen's Beovision Harmony TV set plays an important role in proclaiming the artistic taste of the client.

5. 天花板以木材和手工漆兩種材質，隱約卻又明確地劃分出空間框架。金屬抽油排煙系統宛如幾何塊體的藝術品般，垂吊於空中。6. 客廳的背牆選用紋理較為單一的石材製成，並賦予少許線性切割和金屬元素，營造出躍動感。7. 有鑑於建物結構中既存的樑柱，設計師以弧線造型進行修飾，透過這個「弧」，為公私領域設定出一致的高度，強化連貫性。8. 平面圖。9. 工作區上方設置一盞吊燈作為視線焦點，可自由調整角度和照度，兼顧各式使用需求。10. 有著一定厚度的底牆雖隔開了公區與私領域，但牆體一路轉進主臥室，使其依舊產生某種程度的連結。11. 主臥室藉由退讓的手法，在窗邊設置窗台，使居住者的視野得以向外延續。12. 底牆轉進主臥室後成為收納櫃的形式，利用相似的設計語彙勾勒出協調的景致。13. 主臥衛浴一隅。

5. Spatial layering is rich in two styles, the rustic hand-made surface and the shiny metallic painted surface. 6. Single texture marble builds up the main partition wall in the living room. 7. Curved ceiling formation hides an annoying beams and creates a visual link between the public and private zone. 8. Plan. 9. A beautiful lamp in working zone attracts visual attention. 10. Partition wall that extends from the public to the private zone. 11. Master bedroom is equipped with a cozy window corner for visual wondering. 12. Partition wall extends from the public to private areas then enters to the master bedroom. 13. Master bathroom.

To own a good living space is a dream-come-true expectation for many people; a home is not just a place to dwell but a spiritual harbor to comfort daily pressures found in the working environment. This residence is owned by a single lady and she had a very high demand for the place she lived. The existing plan had a problematic layout, clamped by the improper positions of the kitchen and bathroom, Arthur proposed a total change of the layout but without rearranging all its piping systems. A key design issue was to treat the balcony in reverse by transforming it from a utility space to a garden for spiritual refreshment.

Space interlocking in continuous sequence

The residence has only one partition wall that separates the public from private zone. Sliding doors prevent the visual obstruction of the wall and allows a totally smooth surface. Arthur believes spatial demarcation in terms of function is an old

建材分析 Material Analysis

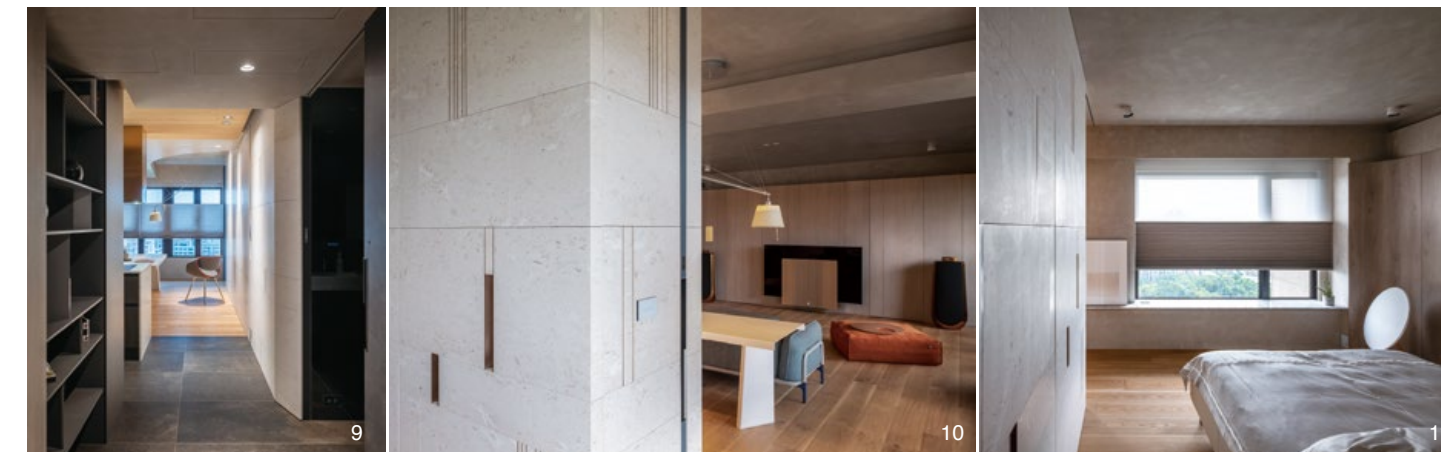
1. 燈光計畫方面主要採取重點式照明，工作區以可調整角度的吊燈為主，使其成為視覺上的焦點。2. 家具軟件多購入 D&L 丹意信實代理品牌，例如揚聲器為 Bang & Olufsen、沙發是 Rolf Benz。3. 在素淨調性中嵌入些許金屬元素，不僅與業主鍾愛的香響顏色相映成趣，亦為空間注入輕奢質感。

1. Lighting quality enlivens the energy of the space, and a stylistic lamp in the working zone attracts visual attention forcefully. 2. D&L furniture pieces such as B&O, Rolf Benz etc. compose the main selections in this residence. 3. Metal members energize the space in many details.

溝通重點 Communication Note

1. 作為都會女子的單身住宅，設計團隊希望賦予這個空間較為彈性靈活的平面布局，不讓隔間限制了開闊性。2. 利用建商原先配置的管路位置進行玄關、開放式廚房以及衛浴等格局的調整。3. 中性、樸實的原則是本案的色調主軸，並適度於細節處裝點亮色系，增添層次。4. 業主對於有著女兒牆的戶外陽台不甚滿意，設計師透過綠化的植生牆塑造空中花園，削弱結構的厚重感。

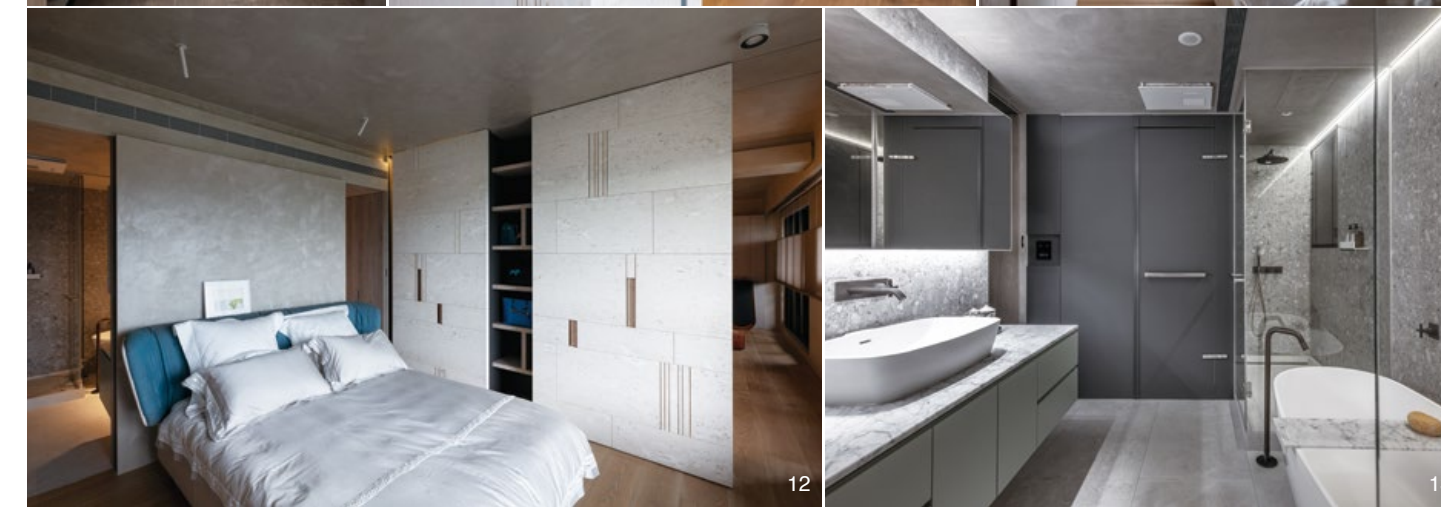
1. This residence is for a urban single lady. She expected the space to be totally free without blocking walls. 2. The conversion of the existing layout still followed the existing piping system. 3. The material used in this space are plain in color and texture motif. 4. A private garden was created in the balcony and th greenery completely changes the relationship between interior and exterior.



9

10

11



12

13