

Oriental Panorama

今繪東方

設計者」 P A L DESIGN GROUP / 梁景華
攝影者」 黃早慧
空間性質」 別墅
坐落位置」 中國
主要材料」 油漆、乳膠漆、雲石、石英石、木飾皮、地板、銅、
特色玻璃、鏡、牆紙、繃布、人造皮
面積」 173.9 坪
項目年份」 2019 年

Designers」 P A L DESIGN GROUP / Patrick Leung
Photographer」 Zao Hui Huang
Category」 Villa House
Location」 China
Materials」 Paint, Emulsion Paint, Cipollino Marble, Quartz, Veneer
Wood, Planks, Steels, Featured Glasses, Mirrors,
Wallpapers, Upholstery ,Faux Leather
Size」 575m²
Project year」 2019



淨白凝練的空間蘊含東方雅致禪意，溫潤內斂一如君子，
以現代極簡之筆描繪古典骨幹，藝術綴飾氣韻，重新定義奢華標準。

坐落於青島海灣畔的高爾夫莊園之中，如茵綠草襯著遠處的海天景致，使此地生活有別於城市喧囂，更添悠閒度假氛圍。建築完工於數年前，外觀仿擬歐式古典莊園風格，隨著近年中國大眾審美改變，愈加能接受簡潔、低裝飾性的設計，業主邀請 PAL 團隊操刀，賦予別墅嶄新面貌。設計師梁景華貫徹自身「簡約便是美」的主張，室內以潔白色為主調，點綴些許淡青色軟裝，多處留白展呈現代人文樣貌，藉俐落凝練的線條刻畫出空間層次，於內外塑造反差。他比喻，設計應如「君子」，無過亦無不及，將基本需求融入生活，看似簡單的設計來自處處精心思慮，為一家人打造舒適的生活居所。

基地為地上兩層、地下一層的獨棟別墅，1 樓為主要待客場域，包含客廳、餐廳、廚房、茶室及孝親房等。客廳處兩層挑空，為住宅增添開闊與氣勢，梁景華分享，別墅設計應跳脫一般日常住宅思維，高度是其中一項指標，藉由不受拘束的視覺及體感，打造不一樣的生活體驗。地下層設定為「會所」，作為家人、親友彼此交流和娛樂之用，空間配置上加深私密性，除了家庭廳外，亦設置影音室、酒窖與收藏室等。得益於建築原有的下沉式庭園，透明天窗可於白日引入一定採光，潔白主色調維持明亮度，免去一般地下層容易潮濕陰暗的困擾，並運用半透明玻璃及牆體縫隙，形塑穿透視覺，更加放大地下層空間。臥房則安排於 2 樓，提供夫妻及一雙兒女使用，以套房為構想，享有各自獨立的衛浴空間，主臥房更規劃寬大的衣帽間，便於收納。臥房設計延續公共區域簡潔風格，但增加床頭繃布材質及青色比例，強調臥房柔軟、溫暖氛圍。

古典為體 現代為用

儘管簡白空間誕生自現代主義，此作卻流露著濃厚的東方韻味，格局構劃上化用古典建築思維，空間機能清楚且各自獨立，整體排列緊湊，不浪費一絲一毫，盡可能減

Patrick Leung



P A L DESIGN GROUP / 梁景華
畢業於香港理工大學 (PolyU)，2012 年榮獲美國林肯大學 (Lincoln University) 頒授人文學博士，1994 年創辦 PAL DESIGN GROUP 擔任公司首席設計師。梁景華致力追求創新、永恒及簡約的設計，擅長融合東西方文化，將設計與藝術交融並兼具實用性；他強調空間需和諧而舒適，而設計是為了優化環境、提升生活的素質。曾獲荷蘭 FRAME 設計大獎、美國 IFI 卓越設計大獎、德國 iF 設計獎、英國 Andrew Martin 國際室內設計大獎、美國 Interior Design 年度最佳設計獎、美國 IIDA 國際室內設計協會全球卓越大獎等，並為美國《Interior Design》名人堂成員。

P A L DESIGN GROUP / Patrick Leung
Patrick Leung graduated from Polytechnic University Hong Kong. He found P A L DESIGN GROUP in 1994 and since then the firm has built an iconic reputation by his insistency in design and built quality. PAL is particularly famous for its success in mingling East and West cultures into a whole and promotes interior design as discipline where artistic and pragmatic demands must meet. He has won many awards such as FRAME design award, IFI Award, iF Award, Andrew Martin Interior Design Award, American Interior Design Award, IIDA exceptional designer, and named the best designer in the magazine of《Interior Design, US》.

1. 簡約線條塑造現代語彙。2.1 樓包含餐廳、客廳與茶室，為主要待客空間。

1 Simple furnishing in a modernistic character. 2. The first floor includes the main public space: living space, dining room, and tearoom.



3



5

3. 基地白日採光充足，照明僅需補足夜間需求。4. 空間處處裝飾藝術品，點綴空間質感。5. 1樓平面圖。6. 客廳挑高兩層，增加開闊與氣勢。7. 公共空間以潔白色調為主，呈現高雅氣質。8. 1樓茶室，採光窗仿擬木格柵造型，為空間增添東方韻味。

3. The building receives ample natural light. 4. Art pieces appear everywhere. 5. The first floor plan. 6. Double level living room in a grandiose scale. 7. White color dominates the color in the living space. 8. The first floor tearoom and its windows embellished by wood grating.

去裝飾性、符號性元素，刻劃出「經典」印象。此外，梁景華更善用傳統中式園林的「對景」手法，以牆體作為畫框，串聯起視覺軸線，營塑步移景異之趣。此點於1樓公共區域最為明顯，藉由牆體開縫及櫃體凝聚視覺，橫向串聯起書房、客廳與餐廳三者，使空間彼此產生關聯。藉由中式古典布局手法，使建築內外形成對比，外觀的歐式富麗與室內當代典雅，在踏入空間的第一刻便使人驚豔。

重釐奢華定義

談起別墅，人們直覺聯想的大多是華美至極、雕梁畫棟的建物，彷彿這樣才與居住者的身分地位相符，但梁景華欲打破大眾的狹窄審美，「奢華」的定義從來不只一種，因此他特意營造反差，證明平實且舒適的空間亦能使人眼前一亮。全作皆使用淨白塗料，搭配少許簡單的分割線條為空間增添味道，然而因為處處講究，細節的平整與用心使此作於低調之中顯現「簡約美」，梁景華舉例古今中外的建築，愈奢華者往往愈是簡約平實，「平實之中帶有驚奇，便是我們所欲達到的目標。」

驚奇從何而來？梁景華認為藝術是最高境界的奢華，因為藝術品所渲染出的情緒、背後故事，能使人與空間相互連結，因情感而產生價值。因此空間重點處皆布置著藝術雕塑，如1樓書房至餐廳的視覺軸線上，便安排水晶雕塑及挑高處仿水墨形式的壁面造型，兩者意境呼應，如山水亦如煙，並延伸至後方餐廳壁面，三者各自為獨立藝術品，卻又互為前後景，成為一幅完整畫面。採訪 | 林慧慈



6



7



8

Situated right in a golf course village and facing beautiful Qingdao Bay, the villa house is far away from the clamor of the busy city. The building is a European style cottage with decorative motifs on the façade cladding. PAL was commissioned to follow the fusion style of both modern and classic to provide the most appropriate interior solution. Patrick followed his design philosophy. Simplicity is beauty and the use of materials in color and texture should not be lavish but should be elegant in detail. Intentionally left-out spots like a Chinese painting which always reserves a void space to attract the viewer's visual lingering.

The first floor is mainly the public zone and a parent's bedroom. The living room is ample and has two double level space above it. The open-up of the existing floor to yield these courts is the main idea of the design because Patrick believes this is the unique feature to show how a retreat house is different from that of one's daily residence.

The basement space is a social club, furnished to meet the needs of gatherings of family members, relatives, and friends. The layout has a family room, audio-video entertainment room, wine storage and collection hall. Taking advantage of a sunken courtyard, the basement is full of light and even the deepest spot can still enjoy substantial natural light. The bedrooms are placed on the second floor; one is for the parents, the other two for son and daughter. Each room is equipped with an independent bathroom and ample storage. The parent's room has an attached walk-in closet. Colors and materials applied in the bedroom offer intimate comfort.

9. 水晶雕塑與後方壁面造型呼應，宛若水墨畫裡的一縷輕煙。
10. 餐廳區域，與廚房中島貫串相連。

9. A crystal sculpture dialogues with a dominating partition wall. 10. An island table links the dining room and kitchen together.





11



12



13

11. B1 空間為家庭、親友聚會之用，設有家庭廳、視聽室、收藏室等。12. 家庭廳，一旁為下沉式庭院提供自然採光，並以間接照明補充光源。13. B1 酒窖區，提供收藏並展示的空間。14. B1 平面圖。15. 2 樓平面圖。16. 主臥房，以淺白與淡青色為主，強調放鬆氛圍。17. 主臥房內設置大坪數的衣帽間及衛浴。18. 1 樓孝親房，亦可作為客房使用。19. 2 樓孩子房，選擇更加清淺的色調，呈現青春、活力感。
11. Basement space is a gathering venue for families and friends to enjoy with. 12. Basement family room is full of natural light. 13. Basement wine vault. 14. The B1 floor plan. 15. The second floor plan. 16. Master bedroom is leisure ambience. 17. Master bedroom and its attached closet. 18. Parents' bedroom is often used as a guest room. 19. Children's bedroom.

建材分析 Material Analysis

1. 空間以白色塗料為主，刻意打破奢華刻板定義，透過平整細緻的手工於低調中彰顯高雅。2. 多處點綴藝術品與畫作，藉由藝術昇華空間氛圍，並呼應居住者收藏喜好。
1. White color dominates the space, and redefines what luxury should be. 2. Art pieces collected by the client appear in many key positions of this villa home.

溝通重點 Communication Note

1. 此作為高爾夫莊園內的獨棟別墅，設計除呈現高雅奢華外，更與日常住宅區別，突顯放鬆度假氛圍。2. 建築外觀仿歐式古典風格，室內設計則以現代簡約手法出發，刻意營造反差。
1. This retreat villa is situated in a golf village, and the design features extensive leisure comfort. 2. Interior furnishing makes a strong contrast to the building itself, which appears like a European mansion.

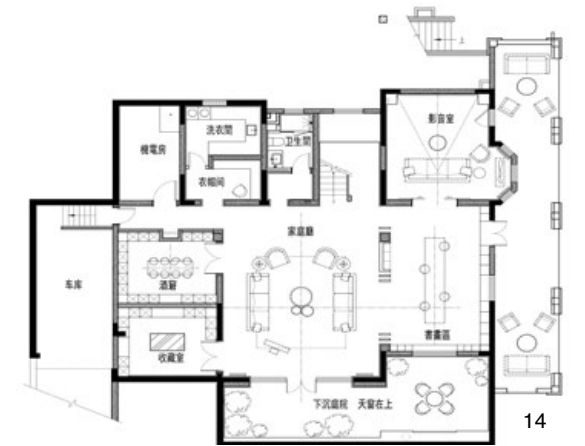
Modern dialogues with classic

Even least embellished interior associates to the language of modernism, the villa gives opposite character; the spatial order follows the traditional layout for a Chinese residence which groups spaces in a tight and strict symmetrical sequence, and the layout provide chances to treat the space like a landscape garden in ancient China. Using the techniques called "borrowing views" Patrick allows a visual path linking library, living room and dining room together. Views are experienced by one gaze to another space, and eventually all views are linked together like a moving sequence.

Luxury and living quality

It would be easily assumed that a retreat house must be furnished in luxurious furniture pieces and use the most expensive materials. Patrick rebuts this common knowledge. He proclaimed that luxury is a relative idea; he believed that living well is the most valued concept of luxury instead of lavish materials and expensive furnishing objects. To emphasize this idea, he listed two things: fine details, and appropriate furnish designs are two ways to guarantee the true value of "luxury."

In this villa house, there appears many art pieces in pivotal positions. Art works are essential elements that bring life to the space, Patrick has noted firmly. He knows that properly picked art works will add an emotional link to family members and bear good memory to their bond. Three main positions where art works are placed include a vista from the library to the dining room. A main wall vertically extending two levels for visual wonderment, and back partition wall against the dining room.



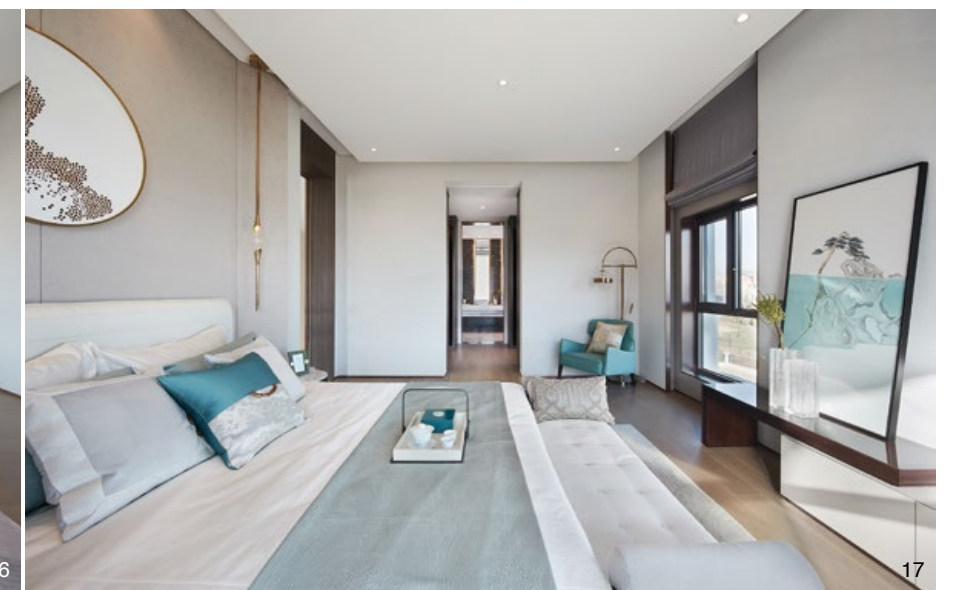
14



15



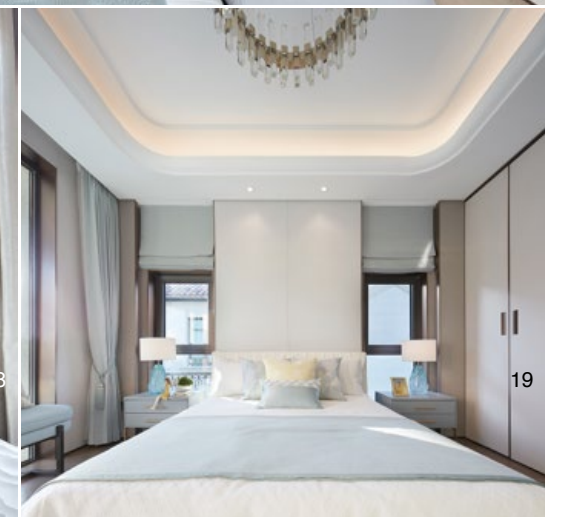
16



17



18



19