

Family 家人

設計者」 瓊奕國際設計工程有限公司 / 方信原
設計者」 洪于茹 吳竺凡
攝影者」 鄭鼎
空間性質」 住宅
坐落位置」 台灣
主要材料」 礦物塗料、冷噴漆、鐵板、人造石、海島型木地板
面積」 30 坪
項目年份」 2021 年

Designers」 Wei Yi International Design Associates / Shin-Yuan Fang
Project Team」 Teresa Hong, Cindy Wu
Photographer」 Dean Cheng
Category」 Residential
Location」 Taiwan
Materials」 Mineral Paint, Spray Paint, Metal panels, Manmade stone, Solid wood flooring
Size」 99.1m²
Project year」 2021



備受限制的原始基地，設計師透過三要點進行再造，在結構、立面、材質的相輔相成下，為居住者擊劃了無拘無束、自由相伴的一方天地。

「空間的靈魂，生活的寄託」，是方信原設計師在《家人》一案中秉持的精神。業主為一對夫妻與兩隻貓咪，人口與居住需求十分單純，而基地則為屋齡約 25 年左右的老屋，早期建物的室內格局為順應銷售因素，原有格局較為窄化，且樓層高度和現今建築樓高相較之下，較顯低矮，亦有採光不足之缺點，瓊奕設計針對生活格局、動線等層面著手進行調整，並在設計上透過結構、立面、材質的運用，改善居住者所面臨的問題。

動線串聯起的立體生活軌跡

原始格局受到窄化及結構的限制影響，予人的體感較為狹隘，且在有限的面積裡，有著多達四間臥室，與一間墊高約 40 公分的和室，並不符合業主僅需一間主臥及多功能備用空間的需求。由於基地位於 2 樓，靠窗區塊過往被設定作為露台使用，此處成為既定的加建，無法隨意拆除；再者，考量到最低矮的樑柱僅約 220 公分，原始天花板亦僅 280 公分左右，如何令整體環境看起來寬敞、不壓迫，是業主提出的要求。由於既存且不能拆除的承載牆和反樑，替室內帶來諸多限制，有鑑於此，方信原重塑了平面架構，藉由格局的調整，使得場域得到合理分配，且符合使用機能，而 L 型動線的運用，也促使公領域坪效達到最大化；低矮樑位的缺點，則利用「斜式型態」的天花板結構解決，整合了餐廳、客廳、休憩區等區域，放大連續面的視覺效果，避免天花板因為樑柱高低不齊而受到切割；承載牆及反樑透過「平台規劃」的手法，延伸了片狀語彙，使空間立面形成立體的鏈結，亦完善特殊機能（貓跳台）的布局，滿足兩隻貓咪成員的需求。

1. 既有不可拆除的承載牆和反樑結構，設計團隊透過「平台規劃」，延伸空間的片狀語彙。2. 鞋櫃除了區分玄關與客廳外，也能在虛實之間產生想像性。
1. Design team extended the vocabulary of the space through "platform planning" 2. The entry storage cabinet defines the boundary between the vestibule and living space, a contrast between solid and void in the space.

Shin-Yuan Fang



瓊奕國際設計工程有限公司 / 方信原
成立於 2003 年，設計師方信原畢業於國立藝術專科學校及中原大學室內設計系研究所碩士，曾任職於大元聯合建築設計事務所及李肇勳室內設計顧問有限公司。常透過城市旅遊的方式，進行城市人文的觀察及研究。事務所致力於將低度設計運用於各項規劃，並探討人們在低度的空間裡，各層面所產生的影響。
公司作品多次登上國內外知名媒體，如德國《PLACES Of Spirit》、義大利《ELLE DECOR》、義大利《Marie Claire Italy》、紐西蘭《Home Living》、俄羅斯《Interior the best》等等刊物，並獲得如台灣 TID Award、香港 APIDA 獎、中國 IAI 獎、英國 WAF INSIDE Awards、德國 iF Award、德國 Red Dot Design Award、德國 German Design Award、義大利 A' Design 等國際大獎。
於設計上持續以現代主義、宋代美學及侘寂文化為架構而成的低度設計為主軸，將文化、藝術、環保等相關元素，整合運用於生活及空間的設計中。

Wei Yi International Design Associates / Shin-Yuan Fang received his undergraduate degree from NTUA and a master degree at CYCU. He worked for several prestigious design firms and then found his own design firm in 2003. He has travelled extensively and loves to transform his travel experience into his design works. Wei Yi's interior design works appears consistently in famous international media such as 《PLACES Of Spirit》, 《ELLE DECOR》, 《Marie Claire Italy》, 《Home Living》 and 《Interior the best》. Many of his works have won design awards such as the TID Award in Taiwan, APIDA Award in Hong Kong, IAI Award in China, WAF INSIDE Awards in England, iF in Germany, Reddot and German Design Award, etc. Shin-Yuan Fang prefers a modern style infused with Chinese and Japanese aesthetic philosophy; he loves to use eco material in artistic arrangements.

《家人》一案，主要探討家人之間的陪伴，以及與居所的互動關係。方信原進一步解釋道，他應用了義大利建築師卡羅·斯卡帕（Carlo Scarpa）的建築理念，爬梳有機裝飾、節點構成、分離與細部、分離與連結、片狀性與整體感、量體與轉角等相關論述，並在咀嚼內化後，透過嚴謹又細膩的設計手法，呈現立面的多元樣貌。空間整體以純粹的白色為基調，看似單一，其實蘊藏眾多微小卻精緻的細節，舉例而言，由四個面組成的電視牆畫面，「漂浮平台」是貫穿其中的元素，如何精準拿捏離地高度、平台厚度、溝縫、節點等尺度，考驗著設計師的嫻熟功力；另外，材質的細微變化也是設計團隊重視的要點之一，同為白色系，但噴漆、塗料、鐵板等所構築出的紋理，卻在不經意之間躍入眼簾，成為另一道風景。

設計思緒必須貼合現況

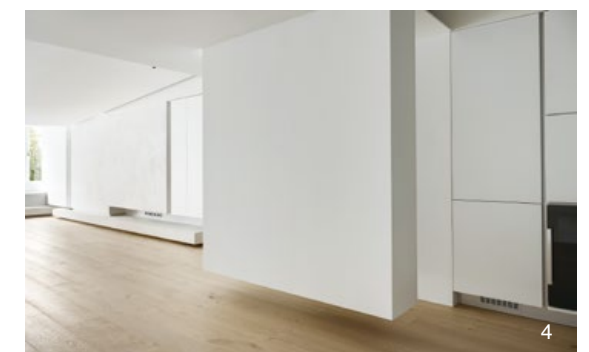
方信原注重垂直面跟橫向面的相對性，結構間的距離比例亦恰到好處，他表示，在操刀平面時，需依據基地既有高度、深度彈性調整設計策略，而非採取固定且僵化的模式，忽略了與周遭環境搭配的適切性。如同本案不可拆卸的反樑結構，設計團隊順應原有高度，將其包覆成踏面，成為居住者或坐或踏的休憩區，亦可作為貓跳台的延伸，塑造更為流暢的動線；貓跳台的外觀形式則參照了貓咪們的行為模式進行打造，在滿足貓咪日常活動所需之餘，更不忘將斯卡帕的建築理念串接於此，形體上的溝縫、分割俐落卻又詩意，襯托出量體的漂浮和輕盈，充滿著設計巧思。

簡潔元素構建而成的主臥，氣質典雅樸靜，縝密的設計思緒勾勒出適宜的尺度和比例，突顯出空間的穠纖合度；門片則以格柵作為隔斷，可朦朧映照出內部輪廓，虛實之間更顯層次。「場域模糊化、機能結構化、氛圍個人化」，設計師秉持著上述三項原則，賦予老房嶄新面貌，讓居住者的生活，更加自在、簡易又舒適。採訪 | 陳映葵



3. 電視牆。由四個面組成的畫面，隱含多種不同材質的對話，如何精準呈現材料的比例，避免片段的視覺感，是一大挑戰。4. 基地約有25年屋齡，原始格局較為窄化，漂浮的幾何塊體不僅劃分了場域界線，亦保留了空間的穿透感。

3. The entertainment wall is composed of different materials. The main challenge was how to accurately present the proportions of materials and as well as the material dialogue between surface as visual continuity was the main challenge. 4. Transforming an existing 25 year old apartment building with a relatively narrow layout by using floating geometric blocks as space dividing boundaries while also retaining the sense of penetration of the space.





5



6

7



8

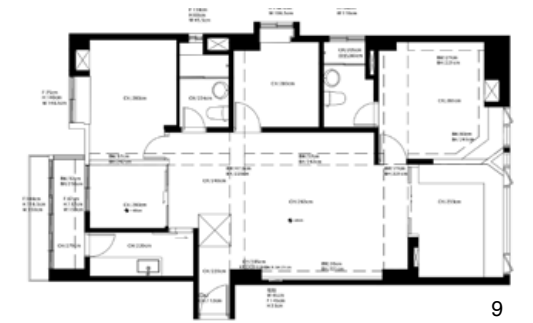
5. 「斜式天花」貫穿不同場域，替公共區域的立面帶來了連貫性。6. 從建築大師史卡帕的理念中提煉出本案的精髓。平面和立體間的轉換順暢自然，不同結構的分離和銜接實為設計功力的展現。7. 平台規劃亦完善了特殊機能—貓跳台的設置，成為家中成員相互陪伴的舒心角落。8. 貓跳台細節。溝縫、節點等變化，讓形體具結構之美，也顯現出匠心獨具的韻味。9. 原始平面圖。10. 現行平面圖。11. 木質地坪強化了空間的和暖感受。

5. The sloped ceiling planes runs through different spaces bringing continuity to the public area. 6. The essence of this project is distilled from the Scarpa's design concepts. Natural and smooth transitions from plane to three-dimensional volumes and the separation and connection between elements is the demonstration of design talents. 7. The platform design fulfill the special functional requirement - cat jumping activity stage, which becomes a lounging leisure corner for family to gather and accompany. 8. Unique details at Cat jumping platform. 9. Existing floor plan. 10. New floor plan. 11. The wood flooring fortifies the sense of warmth of the space.

"The soul of space, the sustenance of life" is the design essence upheld by designer Fang for the residential project of "Family". The existing apartment building is a 25 years old structure with a relatively compressed lower floor height, compacted narrow interior layout as well as insufficient natural lighting. Considering the family consists of an owner couple and two cats with simply living needs Wei Yi's design reconfigured the plan layout and circulation, working with the existing structure, elevations, and materials to improve the living space quality for the occupants.

Three-dimensional life trajectory linked by circulation

The existing plan layout was affected by various structural limitations, as well as a limited floor plate. While there were up to four bedrooms and a raised Japanese tatami room it did not meet the owner's needs and overall appeared to be very compressed. Therefore how to make the overall environment look spacious and not oppressive was the main requirement made by the owner.



9



10



11



12

Due to the existing conditions and the impossible to demolish bearing wall and upturn beam structure the interior had many restrictions. In response the design team reconfigured the plan layout, reorganize the circulation based on functionality, and maximized the public area spatial efficiency. For the area with existing low beam conditions the use of a sloped ceiling plane solved the low head height clearance deficiencies and the ceiling plane now functions as connector of the integration of the dining room, living room, and lounging area. The continuous surface enlarges the visual effect.

Through a "platform planning" technique to resolve the upturn beam disruption, the designers extended the monolithic plan vocabulary into a three-dimensional connection This also improved the layout with a special function (cat jumping platform) to meet the needs of the two cat family members.

The "Family" project is focused on examining and rediscovering the companionship between family members and the interface with the dwelling space. Designer Fang further explained that he applied the Italian architect Carlo Scarpa's architectural detailing vocabulary such as notions of elaboration, composition, separation and detail, volume and corner, etc., through rigorous and delicate design techniques to present the multiple appearances of the elevations.

12. 在燈光計畫上，僅布局必要的間接光源和投射嵌燈，其餘則以燈具做輔助。13. 廚房。整體以白色作為主調，帶來一致性。14.15. 多功能備用空間。以活動拉門保有使用模式的彈性，可作為客房或公區的一部分。16. 主臥室。簡約優雅的環境，營造沉穩放鬆的情境。17. 主臥衛浴則以塗料為主要材料，地坪的些微傾斜度讓沐浴水流直接進入排水孔，而不會外溢。18. 主臥門片的格柵元素。可隱約透出日常生活的動靜。

12. Indirect light is the main lighting sources and the only place where specific fixtures are needed. 13. Kitchen consists of white finishes as a theme. 14.15. A retractable sliding door allows the space to be used as a guest room or opened up as part of the public area. 16. Master bedroom. A simple and elegant environment that creates a calm and relaxed ambient. 17. The master bathroom with a very shallow sloped floor level for a positive water flow to the drain. 18. Screen door detail at master bedroom.



13



15



14



16

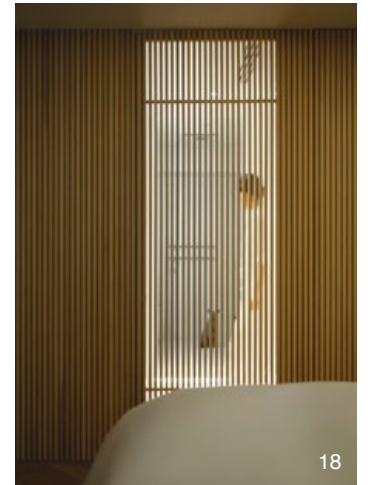


17

The space as a whole used pure white as the base tone, seemingly simple plain but containing a host of exquisite details. The "floating platform" a four sided entertainment center cabinet is a showcase of the designer's design ability to accurately balance the distance to the ground, articulate the material thickness, reveals and proportion. In addition, the delicate change in material is another key points of the design team's attention, within the same white overall appearance, with distinct finish textures, imperceptibly expressing the sense of design.

The design thoughts must be in tune with the current situation

Fang paid great attention to the relationship between the vertical surface and the horizontal plane and the balance between distance and proportion was very important. He commented that when working on floor planning, it is necessary to make design strategy adjustment according to the existing given conditions, rather than implementing a fixed and rigid model which ignored the appropriateness of matching with the surrounding environment. Like the existing upturn beam structure in the space, the design team conformed to the given height, transforming it into a seating area for family that also can be used as extension of the cat jumping platform to create a smooth circulation. The configuration and shape of the cat jumping platform is constructed with reference to cat behaviors and daily activities. Implementing Scarpa style poetic detailing, the setting off the floating and lightness of the volume is full of design creativity. The master bedroom consists of simple elements emitting an elegant and tranquil temperament, and the meticulous design thoughts shape the appropriate scale and proportion for the space; Softening the physical boundaries between spaces, organizing a functional framework, and instilling a personalized atmosphere are the three design principles to which the design team adhered thus and giving the old house not only a new appearance, but furthering offer the occupants a pleasant, simple and comfortable life.



18

建材分析 Material Analysis

1. 以白色為主調性的空間，蘊含著塗料、噴漆、鐵板等豐富肌理。
 2. 地坪原先考慮塗鋪塗料，後改鋪設木地板，強化住宅環境的溫潤感。
 3. 格柵、玻璃元素的運用，帶來了穿透效果，也疊加出居家空間的漸層。
 4. 家具軟件多為進口原裝品牌。
1. The space uses white as the main color scheme tone envisioned through a variety of finish materials and rich textures such as paint, spray paint, and iron plate. 2. The floor was originally conceived to be a painted finish but was then replaced by wooden flooring to enhance the warmth of the residential environment. 3. The use of grille and glass elements allows spatial penetration as well as superimposes the gradient layer of the home's spatial effect. 4. Furniture and accessories all mostly imported brand names.

溝通重點 Communication Note

1. 設計團隊剖析業主居住需求，進行格局再造。僅保留主臥與一間多功能備用室，作為公領域的擴展空間或客房使用。
 2. 基地原有限制與缺陷較多，如何透過設計消弭問題，放大空間體感、優化生活感受，是切入重點。
 3. 兩隻貓咪作為家庭成員，需滿足他們的日常活動所需。
 4. 所有的結構、立面皆經過詳密計算，形塑出條理分明又具韻律的氛圍。
1. The design team analyzes the owners' living needs and reorganized the floor layout. They only retained the master bedroom and a multi-purpose room reserved for use as an extension of the public area or as a guest room. 2. There were many restrictions and deficiencies of the existing site so how to eradicate problems through design, enlarge the sense of space, and optimize the feeling of life, were the main foci of the project. 3. As family members, design considerations needed to include meeting the needs of the two cats and their daily activities. 4. All structures and elevations were carefully calculated and organized to create a well-organized and rhythmic atmosphere.