

Ink shade

墨色光影

設計者」沈志忠聯合設計 | 建構線 / 沈志忠
攝影者」李國民
空間性質」住宅空間
坐落位置」台灣
主要材料」鍍鈦、木皮、特殊漆、皮革、鐵件
面積」92 坪
項目年份」2020 年

Designers」X-Line Design / Chih-Chung Shen
Photographer」Kuomin Lee
Category」Residence
Location」Taiwan
Materials」gilt titanium plate, veneer, special paint, leather, steel member
Size」304m²
Project year」2020



以光影調和濃墨，堆疊材質深淺變化，猶如一幅水墨畫，繪出理想家居樣貌。

在視覺先行的現代，空間往往是業主個性及美學的展現，然而住家在「美」之外，更需考量機能、居住舒適度，以及深蘊其中的家庭情感，如何拿捏其中平衡，便仰賴設計者的專業與經驗。沈志忠新作以住宅較少見的「黑色」為主調，細量材質與光影運用，使得整體俐落現代卻不冷漠。基地位於豪宅大樓高層，享有得天獨厚的地理優勢，四面皆有開窗，將自然綠意與城市景緻盡數納入眼底，並具備都市少有的寬闊露台，為生活情境增加巧思與趣味。

業主一家五口共居於此，設計除需重新規劃公、私領域及四間臥房位置外，更要另闢出書房、練琴室、浴廁等機能。布局依照窗景安排，使每個空間皆享有明亮日光，自踏出梯廳起，視線即向外引導至露台，設計師特別栽植綠樹並打造戶外廚房，使居住者在市區高樓依然可以享受彷彿露營般的環境；入內後右方為主臥房，左側通往公共區域，將客廳與餐廳中的過道設定為鋼琴演奏及展示區，以半穿透的壁爐燈作為分界，增添軟性浪漫元素，成為視覺焦點。

餐廳後方為孩子們的私人場域，以封閉式牆體阻隔視線，設計師提到，三位男孩正值活潑好動的年紀，期待有專屬的空間能夠任其恣意遊玩、放鬆。外側設定為起居室，灰藍色牆面添入活潑感，同時保有整體協調度，更將練習用的直立式鋼琴隱藏於櫃門後，使視覺更加完整、俐落；書房以盒狀手法植入空間之中，作為框架加強窗景與室內的連結，光線可穿透玻璃折門進入起居室，同時作為小閣樓的支撐；內側則是男孩們的臥室，設計延續公區材質及量體主軸，選擇更加軟性的元素如木作、皮革等，再依照年齡、個性不同而規劃各自獨有的特色，如閣樓、展示層板等。



Chih-Chung Shen



沈志忠聯合設計 / 沈志忠
沈志忠 1998 年畢業於倫敦藝術大學省爾壽學院，返台後陸續創辦建構線設計有限公司與沈志忠聯合設計有限公司，並擔任負責人與設計總監職務。其設計理念是透過建構的「線性張力」探索空間本質，挖掘空間與空間相互的恒定關係。執業以降，國內外獲獎無數，歷年來囊括涵蓋亞洲及歐美等指標性設計金獎獎項，如 2019 年英國 London Design Award、2019 年加拿大 Best of Canada Design Award、2016 年義大利 A' Design Award、2008、2011、2012、2014 台灣 TID Award 四屆金獎等，更於 2017 年受邀成為義大利知名設計大獎 A' Design Award 的評審委員，同時受邀出席兩岸演講邀請，不勝枚舉。

X-Line Design Co., Ltd / Chih-Chung Shen
Chih-Chung Shen graduated from University of the Arts London in 1998. After returning to Taiwan, he founded X-Line Design Co., Ltd. in 2005, then set up Chih Chung Shen Union Design Co., Ltd in 2013, and serves as both director and design director. The firm's design concept is to explore the essence of space through a constructed "linear tension." This allows the study of the flowing relationship between spaces as well as the constant relationship between human perceptions and space. The practice has received numerous awards, including 2019 London Design Award, 2019 The Best of Canada Design Award, 2016 A' Design Award, TID gold awards in year 2008, 2011, 2012, and 2014, etc. In 2017, Chih-Chung Shen served as a jury member of the Italian A' Design Award & Competition. At the same time, he was invited to participate in cross-strait speeches.

1. 空間以深色為主調，藉由不同材質堆疊濃淡。2. 一出梯廳即可望見開闊窗景。

1. Dark color is the basic tone of the residence. 2. Balcony view in the elevator court.



3



5

3. 基地四面採光，為空間添入光影效果。4. 公區整體視覺通透無阻隔。5. 藉由光影使不同材質產生協調感。6. 壁爐透過燈光及水霧仿擬火光飄逸的效果。
3. Windows in four directions. 4. Ample view in the public zone. 5. Light and shade create rich layering in the space. 6. Fire lace lighting show.



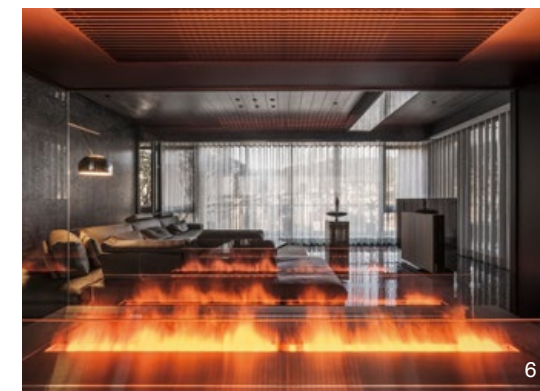
4

濃淡如墨

業主期待新宅能別開生面，自設計初始便堅定黑色調主軸，沈志忠聯想至東方文化中具有重要意義的「墨」，墨色深淺的堆疊構成一幅令人讚嘆的水墨畫，空間亦然，透過光影調和，使深色材質具有濃淡層次。全案設計汲取墨條的量體形狀，選擇保留細緻肌理的染色木皮、石材等霧面自然材質，在日光下產生不同明亮變化，使得長久居住也不受壓迫，呈現溫度與質感。細處則以鍍鈦、鏡面創造延伸視覺，設計師說明，由於布局水平開放，垂直面也須延伸避免過於扁平，便於走道過渡空間以 L 字型的鍍鈦壁面與天花板創造假性高度；鏡面材質除了貼覆於低樑下虛化存在感，更使用於材質的交接處，藉此加強量體深邃感，營造輕重、高低對比。

光線的運用為本案另一主軸，設計師善用基地原有的採光優勢，將大跨距的窗景全數敞開，且減少公區的封閉隔擋，使日光流入室內，為深色空間增添暖意，營造視覺層次與變化；人造光負責串聯起不同材質，藉由連貫的光源使其產生相同的光影方向與強弱，如同覆蓋於表面的濾鏡渲染，具有協調的視覺效果。整體照明設計區分三個層次：主要照明使用暖白色的投射燈，點亮機能區域，藉由光束呈現自然強弱漸層；輔助照明以線性為主，存在於地燈、壁櫃燈等處，藉此柔化材質表情；情境照明則透過特意挑選的設計燈品形塑放鬆氛圍，除了透過「光」打亮重點，造型美感亦成為空間綴飾輔助。

沈志忠分享，許多業主會將住宅視為夢想的實現，而夢想與實際之間如何取得平衡，一直是設計團隊首要考量的主軸。此作嘗試於有限空間裡做出建築量體效果，藉由適度的留白、轉折、對比手法，善用基地光影條件，令設計保留深度與實感，卻不過於沉重，將業主心目中理想居所的樣貌落實到實際生活之中。採訪 林慧慈

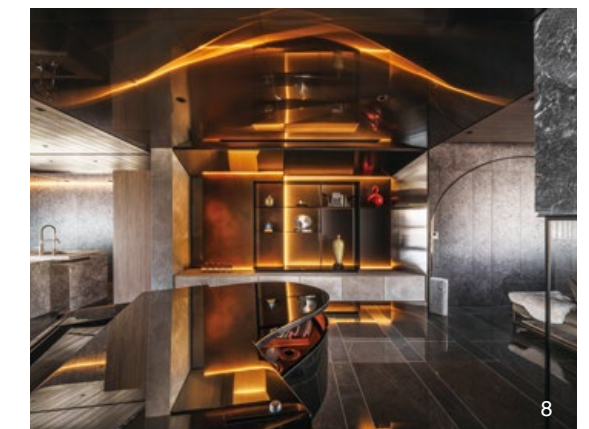


6



7

7. 公區由建築量體堆疊，呈現完整、俐落感受。8. 於走道過渡空間設置鋼琴，成為公區視覺焦點。9. 使用鍍鈦、鏡面材質對比出量體的虛實、輕重。
 7. Living room. 8. Grand piano is a visual focus in the living space. 9. Gilt titanium plates and mirror release the weight of the surrounding objects.



8



9

What is beauty in a living space is questionable, and a wonderment to many, but Chih-Chung Shen clearly states that beauty in a residence depends on a proper relationship between man-made objects and nature. In this recently completed project, Shen took advantage of the unit, which accepts natural light from four directions and an extra-large balcony to invite nature in as a main element to the space. Light accepted into the space dialogues with dark interior furnishing colors so they mingle together like a Chinese ink painting.

This apartment will accommodate five family members, and each will have an independent living unit. Besides the basic living demands, there is a reading room and music room. The entry provides immediate access to a balcony full of greenery and an unusual outdoor cooking space, good for social events like barbecues. The living space has a forked path leading directly to the master bedroom. The living room is designated in a position where a grand piano is placed and joins with the dining room.

An opaque lighting fixture placed between the dining room and living room creates a sensible tactile object for the family.

Behind the dining room is lined up the three bedrooms for young boys. A stand-up style piano hidden behind a cabinet, can be retrieved when needed. The reading room is like a box inserted into a quarter of the family room. The boys' bedrooms vary in color, style and other settings depending on their ages, but to secure their safety the materials adopted are mostly soft and natural such as leather, fabric, and woodwork.



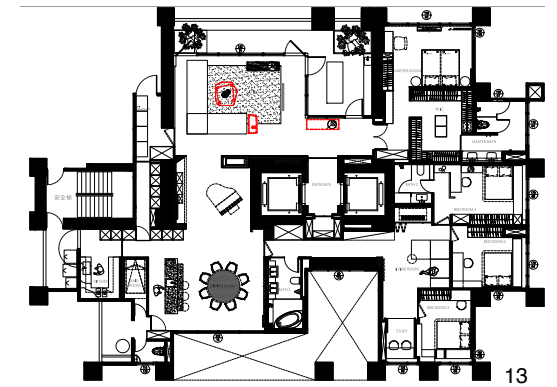
10



11



12



13

Ink painting space

Client loves that his new residence is unique through the use of black as the main color tone. Shen proposed using Chinese ink paintings as inspiration and built the space like said paintings. Natural light is like the water that saturates the ink to create rich layering. Chinese painting is also unique in its brush strokes which create textures that imitate nature and this technique directed Shen's selection of materials such as polished surface dyed veneer, foggy surface marble, gilt titanium plate, and mirror to manage a rich contrast and variation in black shades.

Light is a crucial element in this residence and large windows allow not just good light to come in but also good ventilation. Artificial lighting is treated seriously and it illuminates the darkness while offering an intimate ambience fit for different spaces. Spot lighting in comfortable neutral white provides basic functional lighting; linear lighting on the floor, cabinetry and turning positions is also provided. There are several designer lighting fixtures placed in selective positions; they are treated like art pieces and illuminate these spaces to flavor the overall ambience.

Shen said that many clients treat their home as a dream-come-true territory and sometimes this insistence turns out to be a nightmare. He always suggests his client have a good balance between real living demands and fantasy to maintain a good balance so a perfect design solution will be realized.



14

10. 主臥房設計，延續公區主軸，增添木皮、皮革等暖性材質。11. 視聽區，作為三位男孩的私人領域。12. 書房，以盒狀量體處理，加強框景效果。13. 平面圖。14. 男孩房，書桌處植入矮牆作為遮擋，並保留光線穿透的可能。15. 臥房沿窗景配置，使每個空間皆能享受自然光。16. 三間男孩房使用相同色系與材質，細節處不同滿足各自需求。
10. Master bedroom in an intimate comfort. 11. Audio-video entertainment room. 12. Reading room shaped by a box inserted into the shell. 13. Plan. 14. Boy's room and detail treatment of table and window. 15. Boy's room and the quality of ample natural light. 16. Three boys' room have similar materials and color systems while varying in design style.

建材分析 Material Analysis

1. 運用多種同色系材質，使深色空間在光下仍保留不同紋理，長期居住不致壓迫。2. 鍍鈦、鏡面材質多用於樑下，弱化存在感並延伸垂直視覺；或使用於材質交接處，藉由對比營造出量體的深度與厚度。
1. Materials were used to dialogue with light and create rich layering in a space which has many dark color furniture pieces and color furnishings. 2. Gilt titanium plate and mirror material are clad under the main beams to release its weight and sizes.

溝通重點 Communication Note

1. 業主喜好深色系，期待空間具有現代感與俐落風格。2. 一家五口共同居住於此，需規劃出四間臥房及書房、鋼琴房、視聽區等多個機能空間。3. 三間男孩房使用一致設計語彙，但細節處為每個人量身打造特色，如小閣樓、展示層板等，使孩子感受上較平等。
1. Client loves dark color and expected a modern and avant-garde living style. 2. Program includes basic functional spaces, four bedrooms, piano room, audio-video entertainment room, and a reading room. 3. The three boys' rooms adopted similar material but have variation in their interior settings.



15



16