

Wild House

設計者」合風蒼飛設計公司 / 張育睿

參與者」張晉豪 林婁嫻 吳家勳

攝影者」Hey! Cheese

空間性質」住宅

坐落位置」台灣

主要材料」鐵件鋼材、礦物塗料、牡蠣塗料、鐵木實木、橡木實木、側柏實木

面積」230 坪

項目年份」2021 年

Designers」Soar Design / Ray Chang

Participant」Z. H. Chang, S. S. Lin, Joyce Wu

Photographer」Hey! Cheese

Category」Residence

Location」Taiwan

Materials」metal, mineral paint, oyster paint, solid wood, oak wood, cypress wood

Size」760.3m²

Project year」2021



讓流動、自由、有機的空間型態，蔓延各種生活可能，誘發多樣性使用行為。

這棟棲佇山中的獨棟建築已落成數年，基地四面環山，建築面朝山谷，住宅腹地包含庭院與主棟建築物，原屋形式是擁有多遮簷的日式建築，共含四個樓層，居住成員僅一家四口，而庭院一隅有座用鋼構及燒杉建蓋的小山屋作為瑜伽室與茶屋，以架高型態隱入樹中。

屋主是從事電影創意的專業人士，夫妻熱愛戶外活動、露營、登山，家中育有兩名幼兒，倆人期望給孩子一個自然、開闊的成長環境，在雙方初次洽談時，即提出希望創造一座與眾不同且富有創意的住宅。屋主特質以及對生活的期望，觸動設計團隊思考，一座別於傳統的山居能開拓的可能性？如何給予居住者有別都市喧囂的閒適，以及與自然相惜的美好歲月？據此，全作設計思考自重塑大自然與建築空間之關係來切入，以大樹般的空間意涵，將住宅視為有機體，能隨著家庭階段與生活洗禮而微變生長，如同大樹枝芽般自由舒展，在屋主一家的山居歲月裡，日漸豐滿獨特樣貌。

身在山中 步移景異

設計團隊以「山」之印象重構場域關係，利用各種層疊的高低差，以及垂直向度的伸展，為空間體驗創造有如山林漫步般步移景異之趣味，置身在室內的各種高度、轉折裡，均能領受豐富的風景變化。

因基地地勢特色，室內 B1 至 3 樓均有採光，且局部樓面已有挑空，設計團隊順勢以垂直軸線打破舊況，植入大量錯層的平台、共用、中介或角落空間，褪去傳統分層的刻板疏離。在原有的大挑空區加設多個漂浮樓板，居住者能自不同的錯層高度外望周遭山色，這些漂浮樓板有的作為過道，有的通往懸空樹屋，有自成一隅賞景角落，隨著垂直關係的活潑變化，牽動相鄰的樓層、場域互構對話。



Ray Chang



合風蒼飛設計公司 / 張育睿

東海建築研究所畢業，合風蒼飛設計有限公司主理人與張育睿建築師事務所建築師，專職建築、室內與景觀設計。擅長運用自然印象與元素營造簡樸之美，重視概念演化、空間感與多樣性設計，為業主與使用者創造空間價值。在自然的詩性與設計的實驗性間追求平衡，創作人與自然對話的建築。曾獲德國紅點設計大獎 The Best of the Best、連續四年日本 Good Design Award、德國 iF 設計大獎、金點獎年度最佳設計及台灣室內設計大獎 TID 金獎等。合風蒼飛以自然素材及極簡、原始不造作的美感，強調概念、空間感及多樣性設計，為業主及使用者創造空間價值。相信空間及設計皆是人與自然的延伸。寧靜是現代生活最需要的空間體驗，流動則是現代生活的最佳詮釋。在自然的詩性與設計的實驗性間追求平衡，順應使用者心願及環境，翻轉既定空間想像，創造讓人與自然對話的建築。

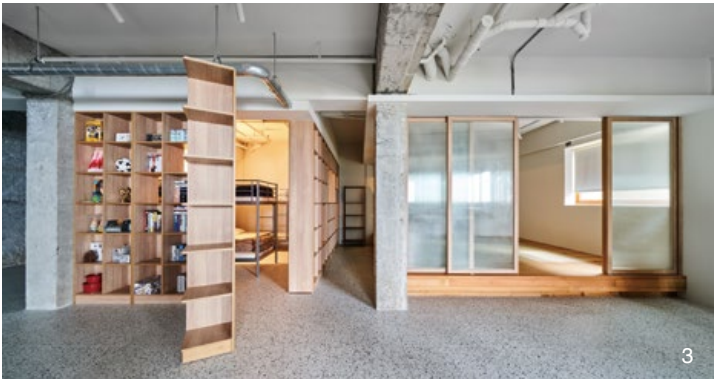
Soar Design / Ray Chang

Ray Chang holds a master's degree in Architecture from Tunghai University. He is the director of Soar Design Studio Co., Ltd. and an architect at Ray Architects specializing in architecture, interiors and landscape design. Chang draws on nature and the elements to create simple beauty while emphasizing conceptual evolution, sense of space and diversified designs to generate spatial value for clients and users.

Soar Design has won many well-known design awards such as The Best of the Best Red Dot Design Award, Good Design Awards in consecutive four years, iF Design Award, Golden Pin, TID Award, etc.

1. 在 1 樓挑空區整合桌面、四分之一的旋梯、平台廊道與樹屋，垂直發展出有趣的生活體驗。2. 庭院以鋼構與燒杉築造一間小山屋作為瑜伽室跟茶屋。

1. The first floor open-cut zone meets with a staircase, a platform, and a tree house. 2. A small structure in the garden is used for a tea house and yoga exercise space.

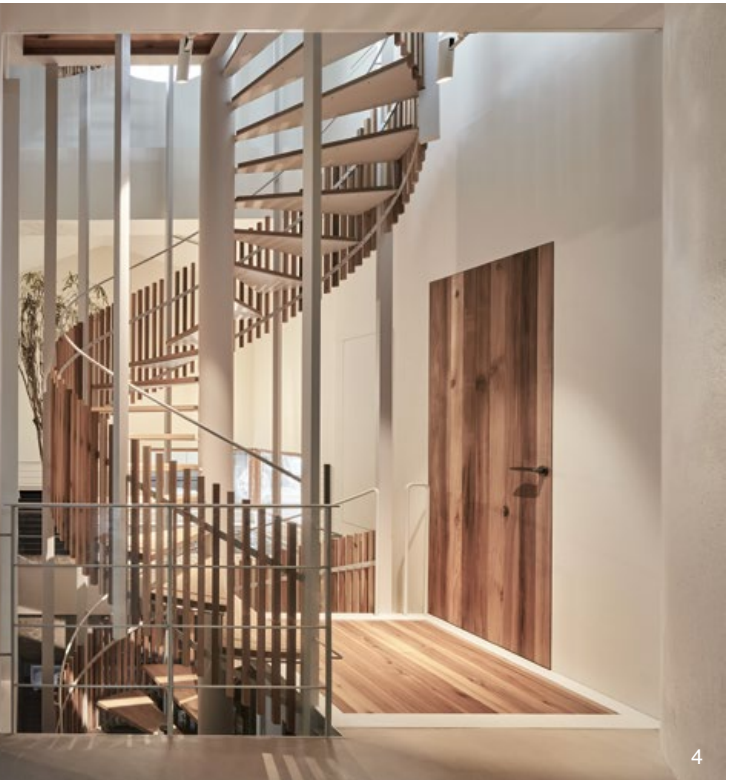


在錯層與挑空並用之下，不僅緊密串聯上下層關係，空間的遊逛感受亦饒富趣味，居住者能選擇共處或獨享角落，自由應用場域，增添生活樂趣。像是，在1樓起居與餐廳空間，以一座共享平台圍繞綠樹，這座平台是共讀、遊戲的聚點，視線隨著綠樹向上伸展能望見2樓動態；又或，利用懸空樹屋作為漂浮樓板的中介，為居家開闢觀測山景的個室，居住者能透過不同角度、高度看望山林變化，也因為樹屋與周邊場域彼此開放，即使享受獨處，亦不感到疏離。

此外，設計團隊以兩座梯區強化垂直向度之變化，因原樓梯位置分割了樓面，導致室內採光氣流、視野穿透性較差，決定拆除舊有長梯改為圓梯型式，並將梯區挪移至臨窗位置，梯座亦以鋼骨與鏤空輕盈姿態呈現，藉由梯筒形成的天井效益促進採光、氣流穿梭。另一個梯座則是自共享平台盤旋而上，不僅緊密了1、2樓之關係，更加强了室內動態的透視感與互望性。

3.B1 採用開放式格局與彈性隔間，保留最大的自由運用可能。4. 室內著重視覺通透與對外汲景。5. 開闊的露台空間，讓生活與自然相依。6. 鋼構與鏤空的梯座造型，讓梯間更顯通透明亮。7. 空間選材以自然素材為主，運用礦物塗料調節室內微氣候。8. 藉各種孔洞、間隙及伸介空間，創造不同形式的連結交流。9. 在兼具水平與垂直向度的公共空間，居住者視線能彼此連結，亦能各自享有隱私。

3. Basement is a flexible zone for all demands. 4. Dynamic scenic views. 5. An ample balcony. 6. Metal structure supported staircase. 7. Natural materials were used extensively. 8. Using cavities, intermedia space and liaison space to create dynamic experience. 9. Visual path allows free penetration while keeping the space private in seclusion.





7



8



9

平面舒展 彈性自由

如何向外納入自然，為室內創造極佳的開闊感，是此作的另項思考。設計團隊自林間大樹汲思靈感，將每個場域視為大樹的枝幹延伸，就像是枝芽向外伸展又能相互連結。在平面重理上，先廓清室內局部隔間，讓空間簡潔、精神，亦將原有建築外牆內縮，為每一層樓創造 4 米深的露台作為建築與環境的中介場域，再以滑軌玻璃門作為分界，抹淡內外隔閡，使生活與視線領域雙雙對外舒展，親近自然。

而室內，也因高低層次的樓板、平台，穿透材料與視覺延展等並用，產生豐富的框景，亦因環境與家屋互為賓主，突顯了住宅被綠貌環繞之特色，將日常沉浸於四季風景之中。在 3 樓，臥室區利用挑高條件增設空中平台與廊道，為睡寢空間拓增閱讀、工作、休閒之應用，也因動線向上伸展，居住者能自由遊逛，近看周遭綠意。

全案透過垂直與水平的延伸發展，蘊生更有機、豐富的樣態，打破了尋常住宅的空間體驗，居住者的生活風景更具流動性、趣味性，可日日隨心穿梭、遊逛裡外，因沉醉當下風景擇席而坐，被環境觸動而衍生更多可能。

建材分析 Material Analysis

1. 鐵件鋼材：鏤空造型與樓梯結構。2. 礦物塗料：用於地坪創造一體成型感。3. 牡蠣塗料：以海線的牡蠣殼外牆作為發想的自行研發塗料，用於洞穴造型。4. 鐵木實木：施作戶外木地板，作為中介內外的平台。5. 橡木實木：作為樓梯踏板。6. 橡木實木：用於天花板。

1. Metal member: used to construct a staircase. 2. Mineral paint: used on the floor. 3. Oyster powder paint: used on outdoor surface to create a rustic texture. 4. Hardwood: used to clad the outdoor platform. 5. Oak wood: used on the flights of the staircase. 6. Oak wood: used on ceiling coffer.

溝通重點 Communication Note

1. 建築屋齡約 10 年內，業主希望能創造一個與眾不同的住宅，讓他的創意工作與生活能夠在具有創意、多樣性的空間中發酵。2. 屋主熱愛戶外活動與自然。整體設計構想，是以大樹般的空間形式結合山林背景，讓空間與使用模式有機的生長，如同自然或樹木自由的延伸。3. 以孔隙與間隙為室內創造宜居的微氣候，深化與景共生的自然體驗。4. 重視高低層次與多面向的賞景角度，加深感受自然的廣度。

1. The building was built ten years ago, and the renovation effort was focused to create a cozy family life filled space in innovative spirit. 2. The client couple loves outdoor activities. The whole design is inspired by an organic spirit like a growing tree. 3. Cavity and opening among floors creates passages for air and light to travel. 4. Diverse floor levels allow family members to enjoy nature in different





11



12



13

10. 大挑空區施作許多漂浮的樓板，讓居住者可以在不同的垂直軸變化上享受山景與生活。11. 將原有的外牆內縮，拓增半戶外露台，讓生活向自然環境延伸。12.1 樓開放式廳區，複合了餐飲空間與共享平台。13. 利用挑空區創造向上延伸的垂直聚合場域。

10. Hovering platforms allow fun visual paths to nature. 11. New balcony creates a liaison space between indoor and outdoor. 12. The first floor open family court mix with dining and living modes. 13. Open-cut zones gives a lifting up energy.

也因強調所有場域都能藉著垂直與水平的迴游動線相連，硬體上挑空輔以多樣化的中介空間、活動式家具，在在促進了各種形式的連結與交流，家庭成員永遠可以共享當下，無論身在哪個樓層、場域，都能隨時關照彼此。

孔洞間隙 自然共生

考量住宅位於山區，設計團隊以孔洞與間隙調節居室的微氣候，這些孔洞、間隙不僅有助於採光與氣流穿梭，其帶來的風景、光線與氣息，更深刻了居室與環境共生感受。

與此同時，全案選材以自然素材為主，除了實木與礦物塗料之外，局部還運用設計團隊研發的牡蠣殼塗料，利用材料特質吐納與調節室內濕度，藉其自然質感呼應環境特色。設計團隊在燈光計畫上亦極為謹慎低斂，依據生活與場域機能來編排照明，注重光線柔暖與明暗層次，引導視線焦點傾注於外部自然，不僅避免人造光害干擾山間景色，當屋主有工作或作業用途時，亦有足夠照度因應所需。

這座山居在「自然」、「有機」、「分享」等精神貫穿下，創造出別具創意與多樣可能的空間，讓流動、自由、共享的生活樣態蔓延出更多使用變化，也因日常不斷與自然交集，居室蘊致就像大樹般日漸豐實，構成有別一般，專屬居住者的私宅風景。採訪 | 室內雜誌編輯部

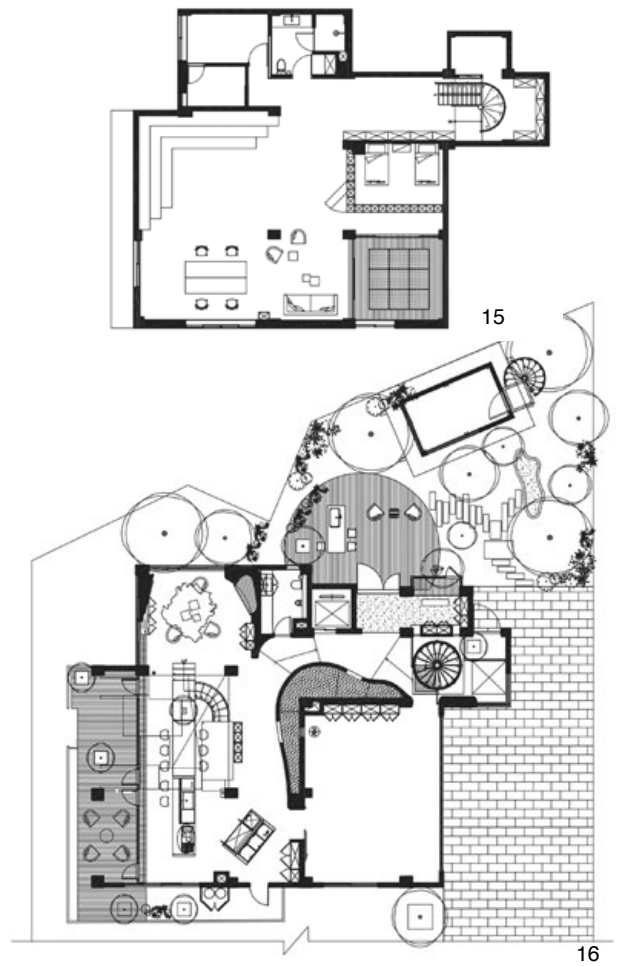


The house has stood in a valley surrounded by mountains for many years. The complex includes a main building in Japanese style, and a tea house in a garden hidden under trees.

The client is a couple in the movie business; both love outdoor activities like camping and mountain hiking. They are raising two young kids and hope the property in such a unique location will certainly provide their children with a different growing experience. Soar Design recognized this exceptional opportunity for the family and the opportunity for the office as well as the site challenged the designer to redefine the relationship between man-made and nature. The design concept sees the building as an organic creature that grows by following the rhythm of time. It responds to the daily cycle of seasons and years.

Mountain life and moving scenery

Mountains with different ridges embrace the valley. They are the dominating features of the site, and the layering of hills inspired



14. 各種高低差與垂直向度的伸展，讓動線仿如在山林中漫步，在各個轉折與角落都能感受不同風景。15. B1 平面圖。16. 1樓平面圖。17. 運用空間穿透感與對外延伸汲景，創造開闊的居室感受。

14. Walking up and down in the living space. 15. The B1 floor plan. 16. The first floor plan. 17. Visual penetration between inside and out create a particular impression of a valley house.

the design to turn the ridge profile into the visual layering of different floor level heights.

The design broke the existing floor levels by inserting several new platforms and creating a corner space in the existing plan. These platforms are set at different heights and constructed in a way as if hovering in the sky. The new floors are used in different ways such as a passage leading towards a tree house or as an exclusive floor level for visual wonderment of nature. The most intriguing one happens on





18



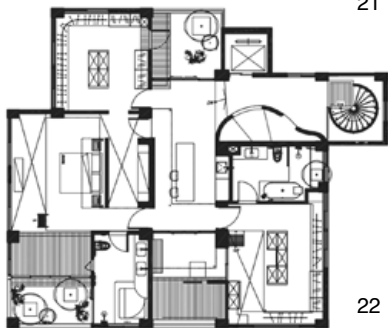
19



20



21



22

the first floor between the dining space and living room; the new platform acts as a liaison but is also used for the kids' playground and reading space. The level height allows a visual casting towards the second floor in a sectional position. Another platform is a structure attached to a tree; it is a small compartment that allows family members to enjoy mountain views with total exclusion. Two new staircases replaced an old staircase which block the view passage to nature. The new spiral staircase is situated along the window and supported by metal supports. The second staircase links to the platform situated between dining and living spaces

Ample freedom

To link people to nature is the main design theme of the project. The project allows the existing building facade to yield a four meter balcony, which plays mediator between outdoors and indoors.

The interior space is energetic due to the new diversely scaled platforms. The third floor bedroom, unique in its extra ceiling height added a lifted platform and passage. Sleeping zones can be used for relaxation and other fun demands such as work, leisure, and view casting.

Like a grotto with extreme beauty in nature

Situated in a valley where moisture is a big problem, the design's solution with diverse platforms and openings allows air and natural light to travel without obstacles. This layout significantly reduces humidity.

Materials picked for this project all come from nature. Not only wood and mineral paints, but grounded oyster powders were also mixed into mortar to spread on the surface of the partition surface. It can absorb excess moisture and the surface of the special paint reflects light in a poetic visual fun.

Nature, organic spirit, and flexibility are the three concepts of the design. The unusual project turns the seemingly fantasized idea into real work and truly appreciated by the family members. It is expected that people who live here will enjoy the moment they stay and remember the time they have been staying.



18. 利用挑空區加設一座懸浮的獨立小屋。19.20. 高低層次與多面向的空間規劃，創造出多變的賞景角度，加深居住者感受自然的廣度。21.2 樓平面圖。22.3 樓平面圖。23. 樓梯緊依窗口，讓視野能夠更穿透，上下走動能感受連續變換的景致。24. 架高的木步道，將動線引往窗外風景。25.3 樓的臥室區利用挑高條件，規劃空中走道與平台。26. 主臥房增設木平台，擴增個室的使用可能。27. 衛浴空間，貫徹自然質感。

18. Open cut court inserts a levitating platform. 19.20. Diverse view levels on tops of the different platforms at different height. 21. The second floor plan. 22. The third floor plan. 23. Staircase is situated against window position. 24. Lifted-up wood built passage provides a position for view wonderment. 25. The third floor master bedroom has a lifted-up platform and a passage. 26. Master bedroom and its inserted platform. 27. Bathroom.

