

Joined Design by the Owners

參與式設計

| Irresistible Predilection |



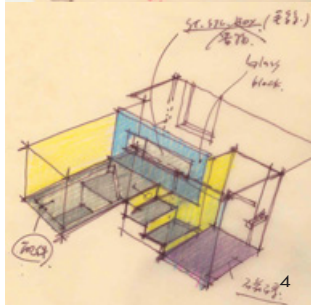
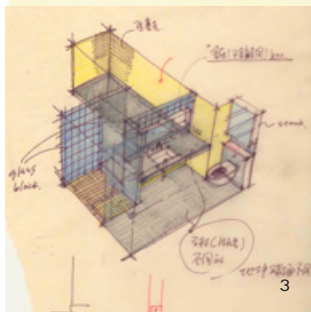
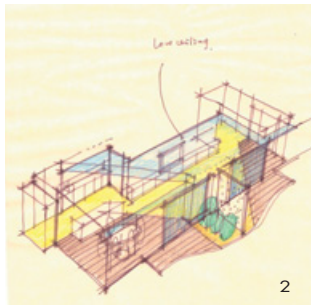


沈中怡
 美國紐約州註冊建築師 AIA · 哈佛大學建築碩士 · 中原大學建築學士
 現職/中怡設計事業有限公司 負責人 · 大?工程股份有限公司 協同主持人 · 淡江大學建築系兼任講師
 得獎/2008 TID AWARD 台灣室內設計獎公共空間類—行天宮玄空書院 ·
 2008 TID AWARD 台灣室內設計獎住宅類—文林北路林宅 · 行天宮玄空書院
 競圖第一名 · 嘉義縣故宮南院願景館競圖第一名 · 2003台北時尚週松山菸廠
 展場競圖第一名 · 台北內湖主向位科技總部競圖第一名

Chung-Yei Sheng
 AIA, New York State; M.A. Harvard University; B.A. CYCU
 Current position:
 CYS ASDO, director; Lecturer, Tamkang University
 Awards:
 2008 TID Award (Public Space: Sun-kun Library)
 2008 TID Award (Residence: Mr. Lin's residence in Yun-Lin Road)
 2003 1st Award, Sun-Sen Tobacco factory Competition
 2003 1st Award, Sien-Wei Tech Headquarter Design Competition

設計者」中怡設計事業/沈中怡
 參與者」楊珮琦 江易書
 攝影者」李國民
 空間性質」住宅
 坐落位置」台北市
 主要材料」石材、橡木皮、木地板、灰玻璃、灰鏡、玻璃磚、鐵件
 面積」90坪
 設計時間」2008年8月10月
 施工時間」2008年10月至2009年4月

Designer」CYS ASDO / Chung-Yei Sheng
 Participants」Pei-Heng Yang, Paul Chiang
 Photographer」K. M. Lee
 Category」apartment
 Location」Taipei
 Materials」stone, oak veneer, wood floor, gray glass, gray mirror, glass
 brick, steel member
 Size」297 m²
 Design period」August-October, 2008
 Construction period」October 2008-April 2009



採訪此案時，令我感到興趣的是設計師告訴我，他是如何與這位對空間略知一二的業主進行設計溝通。由於業主的生活閱歷豐富，讓他對自身空間的品質要求有一定程度的挑剔，同時對設計者如何經由設計專業解決空間現況以及機能需求也有極高的期待。他不是那種僅期待設計師拋出一種對於空間的想像與勾勒，然後將所有空間問題交付設計者決定，而是透過不斷對設計師提出非常具體的詢問，來達成一種參與式的設計溝通。

當設計師從電腦上帶我瀏覽整個設計過程的詳實記錄，他說由於此案業主要求有更高的參與權，因此，整個空間設計幾乎就是經由等量的手繪圖面，一步步的與業主深入仔細溝通後，所產出的設計結果。這使我想起了「參與式設計」，一種透過業主參與的設計溝通概念。

空間解決方案

當此案業主買下這層打通的雙拼住宅，所預定的進駐成員包括夫妻兩人、大兒子以及已成家的小兒子一家三口。故空間上也希望能保留一定程度獨立性給成家的小兒子一家三口。因此案樓面高度高，樑柱也大，使得空間規劃時，必須同時處理樑柱造成空間阻絕、不連貫的問題。

由於業主在之前，也諮詢了數種設計建議，但都未能將樑柱所造成的空間阻礙性問題徹底解決。直到遇到設計師沈中怡所提出的空間解決方案，才令業主滿意，並延伸在整體空間設計規劃。設計師沈中怡針對使用需求所提出的空間策略就是將位於整體空間中央位置的起居間，刻意降低天花板，同時將玄關拉高來界定空間。利用高度上的變化，加上天花造型來突顯不同的空間特性，解決既有問題(樑柱)。

1. 利用高度上的變化，加上天花造型來突顯不同的空間特性，解決既有問題(樑柱)。
2. sketch—公共空間。
3. sketch—大兒子臥室衛浴間。
4. sketch—大兒子臥室衛浴間下沉式浴缸設計。

1. Sketch shows public zone 2. Sketch shows elder son's bathroom and sunken bathtub 3. Sketch shows elder son's bathroom and sunken bathtub 4. Ceiling gap reduces the awkward problem of deep beams from the ceiling



5



6

5. 由廚房望向餐廳。6. 地面折線與材質變換效果。7. 平面配置圖。8. 位於整體空間中央位置的起居間，刻意降低天花板，同時將玄關拉高來界定空間。
5. A view from the kitchen towards the dining room 6. Floor pattern change and details 7. Plan 8. Living room features a lower ceiling height while the lobby expands to a high level

參與式溝通

在設計過程中，設計師再運用手繪透視圖，一一針對每一空間的配置、尺寸等，讓業主在施工前，便清楚了解空間成形前的模樣，包括各種材質、元素設計。再經由雙向溝通，讓設計能夠融入業主生活的種種需求，嗜好、生活習慣等，進而規劃出更具創意巧思、舒適、合乎人性的居住空間！

這種參與式的設計溝通，事實上也考驗著設計師的廣博知識與專業經驗，特別是藉由可能的空間語彙、圖繪等的『模式語言』來幫助業主去深入空間設計的可能性。模式語言是一座橋樑，在參與的過程中，專業者為帶領參與者一起創造設計的構想而發展出模式語言，將業主從虛擬的構想帶進實質的空間設計中，進而引導業主針對需求，提出構想、共同研究設計意見的可行性，進而創造出更燦爛的設計火花。
採訪」周巽莉

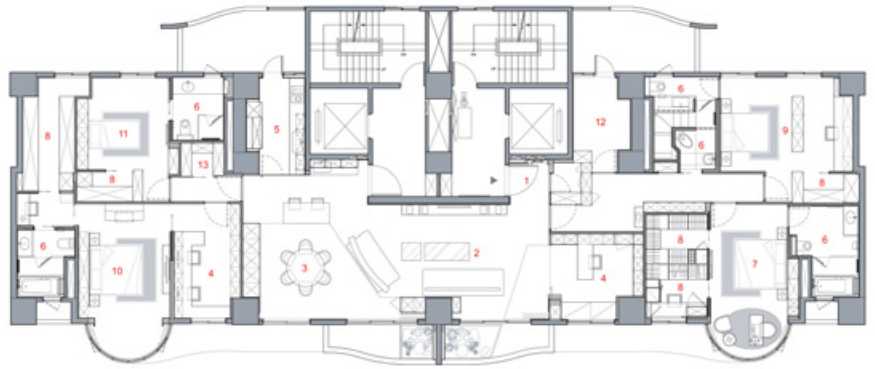
As I interviewed Mr. Sheng, I discovered how this project was designed by a very different process. He told me the client was involved deeply in the design; the client was more delighted to proceed through the design by two way interactions between the designers and him rather than let go after initial discussions or a few communications.

Sheng showed me records of the communications from the beginning to the end. The client's passion ignited the designer's enthusiasm as hundreds of hand-drawings prove the deep and thoroughly dialogue of this unique project. I came out after this brief talk with an idea that this kind of design is what we call "participatory type of design" a design process seeking a joint effort from the client's side.

The solution

This apartment has two units that form a single large space; the family members include parents, an elder son, a younger son and his three member family. There was a serious concern for privacy control particularly for the family members of the younger son. Another tricky problem came out to find a solution of a feasible and efficient use of the available space because the chunky structural units occupied a very big portion of the space.





1.入口玄关 2.客廳 3.餐廳 4.書房 5.廚房 6.衛浴
7.主臥室 8.更衣室 9.長子房 10.次子房 11.孫子房
12.書室 13.儲物間

7



8

Before the client commissioned Mr. Sheng, he already consulted several designers, but none satisfied him until Mr. Sheng's solution shed some light to a final solution. He intent to lower the ceiling level in the central living room then pushing up the ceiling level in the lobby was a genius idea increasing the spatial flow while defining the space in a better way.

Participating joins with the design

In the process of design, Mr. Sheng hand drew many perspective drawings and precisely showed his client every piece of the design details. This two ways communication assured there would be no mistakes on the conception and assured that everything finally built would be visualized in an almost real scale and material.

This "participating design process" attests to the designer's professionalism and even challenges the designer's authority. In this project, designers have step by step guided their client to understand everything that would happen in the future, and this process, according to the designer, was the most valuable in his career. Translated by Ray S.C.Chu & David Mark Riz

9. 餐廳與開放式廚房。10. 餐廳、開放式廚房與起居間的關係。11. 由餐廳望向起居間。12. 書房。
9. Dining space and its elegant open-style kitchen 10. Dining, kitchen and living room space
11. A view from dining towards the family room 12. Reading room









14

13. 主臥室。14. 主臥室與更衣間關係。15. 大兒子臥室內的書櫃。16. 公共衛浴間。17. 大兒子臥室內的衛浴間。
13. Master bedroom 14. Master bedroom and closet 15. Book shelf in elder son's room 16. Bathroom 17. Elder son's bathroom



15



16



17