

Urban Show Case -City Art Cube

Urban Show Case 都市藝術方塊

| Concept x Creativity |



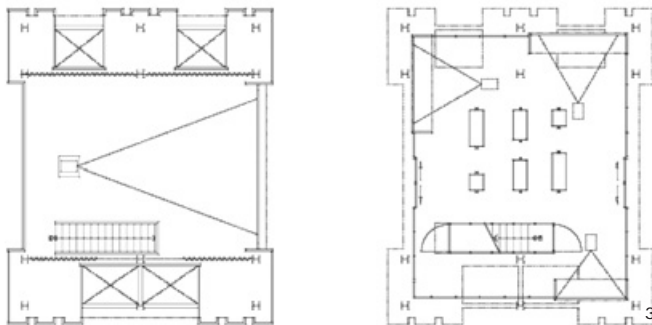


沈中怡
 美國紐約州註冊建築師 AIA
 哈佛大學建築碩士
 中原大學建築學士
 現職
 中怡設計事業有限公司 負責人
 大詒工程股份有限公司 協同主持人
 淡江大學建築系兼任講師

Chung-Yei Sheng
 Registered architect, New York St.; AIA
 M.A. Harvard University
 B.A. C.Y.C.U
 Current positions
 Director, cys.asdo Inc.
 Manager Director, Da-Chi Construction
 Lecturer, Tamkang University

設計者」沈中怡
 參與者」楊珮琦、江易書、陳鴻文、李強
 攝影者」李國民
 空間性質」公共藝術裝置、複合展示空間
 坐落位置」台北電影主題公園(台北市萬華區康定路19號)
 主要材料」鋼構、金屬網、強化玻璃、投影設備、卡典西德
 面積」43坪
 設計時間」2009年10月至11月
 施工時間」2009年12月至2010年1月

Designer」 Chung-Yei Sheng
 Participants」 P. P. Yen, Y.S. Chiang, H. W. Chen, C. Lee
 Photographer」 K. M. Lee
 Category」 public art piece
 Location」 Taipei Movie Theme Park
 Material」 metal member, steel mesh, tempered glass, projection, cutting-sheet
 Size」 43 ping
 Design period」 October - November 2009
 Construction period」 December 2009 - January 2010



位於西門町的電影主題公園內，一座兩層樓高，宛如變壓器一般的外形，四面Urban Screens可投射出大型多媒體的公共藝術裝置「都市藝術方塊」，是由建築設計師沈中怡特別為電影公園量身打造。他以「轉換（Transform）」概念出發，衍生出「Transformer變壓器」的構想，期望整個公共裝置就像變壓器一樣，能夠將文化、藝術活動的能量電流，透過變壓器的轉化從公園的心臟注入動力Energy，進而散布至整個公園，延伸帶動整個區域。

由於Transformer這個名詞也被用於電影「變形金剛」，因此，設計概念中也有某種有趣的聯想和隱喻，企圖讓新的公共藝術裝置猶如變形金剛的多變性，在未來也可讓更多不同藝術家及市民的藝文觀點注入，使藝術裝置成一個多元、多變的有機思想體。

【Transformer】變壓器

台北市電影主題公園前身為日據時代煤氣公司的所在地，位於整個西門町商圈的邊陲地帶，雖有硬體裝置卻沒有軟體，以致公園使用率不彰。沈中怡表示，此一創作目的是為了改變〈transform〉電影主題公園的現況，他以建築人的角度，從電影為發想，期望此一裝置能同步結合空間與功能性，成為整個場域的

凝聚核心。由於，整座公園本身已存在許多設施，但因缺乏主軸及動力，讓這整個大機器無法流暢的運轉。藉由這個「transformer變壓器」來調整原先失衡的動力，讓整個公園硬體可以活絡起來，進而衍生出更多活動的可能性。因此外觀設計上，以「transformer」為設計發想，讓整個裝置以鋼構為主體，並以金屬浪板作為立面，使外觀如同變壓器的散熱片一樣。

1. 空間裝置與環境關係。2. 二樓細部。3. 平面配置圖。1. Site relationship 2. The second floor details 3. Site plan





4



5



6

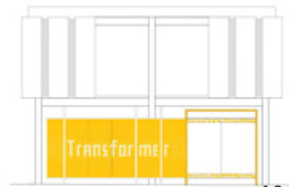
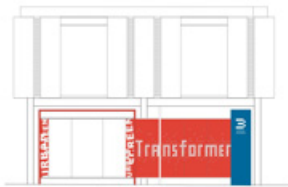


7

4. 整個裝置體結合了互動投影與靜態展示。5. 內部展示與戶外的連結關係。6. 從室內穿透至戶外的空間表情。7. 空間剪影。
4. Active projection system and quiet corner for exhibition 5. Linkage between interior gallery and exterior 6. A view from interior to exterior 7. Silhouette



8



10

8. 一樓展示區。9. 二樓立面以Urban Screens的概念，設置四個戶外多媒體，直接對外傳播訊息。10. 立面圖。
 8. The first floor art gallery 9. Urban Screens delivers message to its neighboring community 10. Elevation



【Function】改變現況，活化場域

外部機能上，除了外觀的造型設計外，更賦予足夠的機能性，四個面向以Urban Screens的概念，設置四個戶外多媒體，直接對外傳播訊息。沈中怡表示電影的實虛影像其實投射的是你與影像之間的關係。故藉由這四個面向的Urban Screens都市觀景窗，投影出西門町環境影像，引發共鳴的市民對都市記憶。而未來亦可作為多用途的商業使用。一樓的室內空間則為小型的靜態展覽空間，可結合外立面的播放題材，進行靜態的展示。

【Spirit軟體導入】城市記憶體

城市是市民集體記憶的場所，就像一個記憶的容器，盛裝著人們喜怒哀樂的發生與生活情感的點滴，因此在四個向度的Urban Screen播放四個屬於台北西門町的真實都市場景，內容不是那些華麗、摩登的樣板觀光地標，而是那些與一般民眾有直接生活情感關聯的場景，能反映出城市心靈脈動的真實場景！藉由這樣的記憶投射，拉近地區居民與空間的關係與情感！採訪「周巽莉



11. 外觀。12. 展示陳列架以懸吊方式呈現。13. 一樓展區與二樓燈光。14. 設計概念-3：Transformer可重組，展覽級投影。15. 設計概念-2：擷取城市中的影像。16. 設計概念-1：改變現況
 11. Outlook 12. Suspension bars for gallery installation 13. The first floor art gallery and second floor lighting system 14. The piece looks like a transformer 15. Design concept 2-images of the city 16. Design concept 1-making change

07 Transformer 可重組、展覽及投影

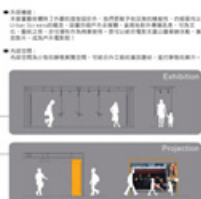
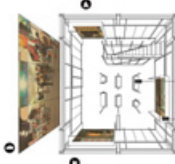
Reconstruction, Exhibition and Projection

城市記憶館

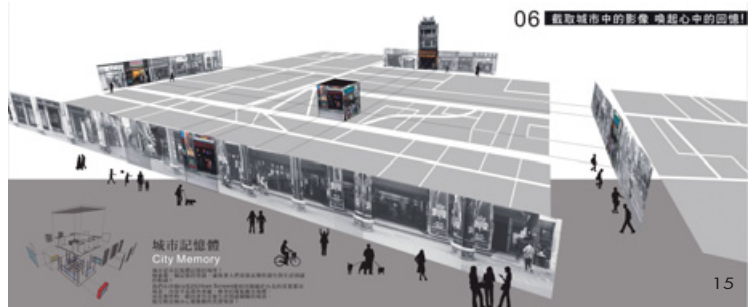
City Memory

四種活化空間的文化活動

- 01 飲食文化 Food
- 02 交通文化 Transportation
- 03 電影文化 Movie
- 04 心靈文化 Mind

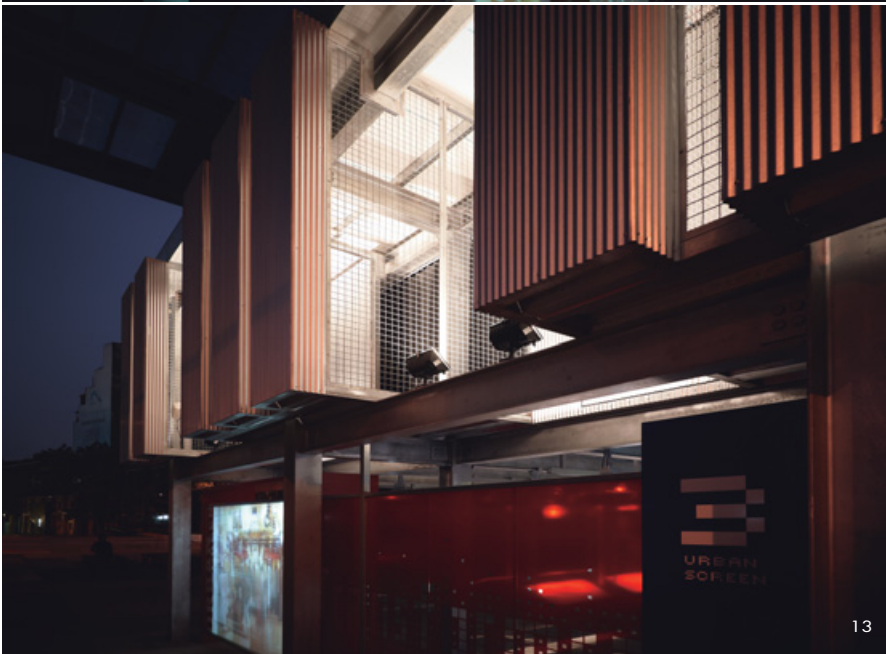


06 截取城市中的影像 喚起心中的回憶!





12



13

Inside the West Gate Movie Theme Park, there stands a monstrous object resembling an electric transformer. Its total height is second stories and projects exhibition images. This art work is interior designer Chun-Yi Sen's recent invention. His idea came from an actual electrical transformer. It is imagined that the piece will make the aging park change from old to new, by pumping artistic energy into the old community.

"Transformer" is not only understood by its actual function but people may also make the direct association to the movie "Transformer"; where the alien robot in the movie can make its body adjust to the environment. In this project the art piece looks like a transformer and works like transformer; it can instantly change itself to adjust to the surroundings and the endless change gives the implication that the citizens welcome opinions of various kinds.

[Transformer]

The site was formerly used by the Gas Company during the colonial period. It was situated at the rim of Taipei's West Gate region. Before the "transformer" was built here, it was a lonely and highly deserted park. Sen said the transformer is good image for the site because the site was waiting to be transformed. His professionalism told him that the success of the site's revival depends totally on how people can come back to the site and enjoy activities here.

There already stands many facilities here yet activity has been missing due to the lack of a main theme at the site. Sen believes the rising of the new art piece will tune up the confused energy and synchronize a power to provide interesting attraction. Steel sheet and corrugated board clad over the skeleton make the object similar to actual heat spreaders on the body of a transformer.

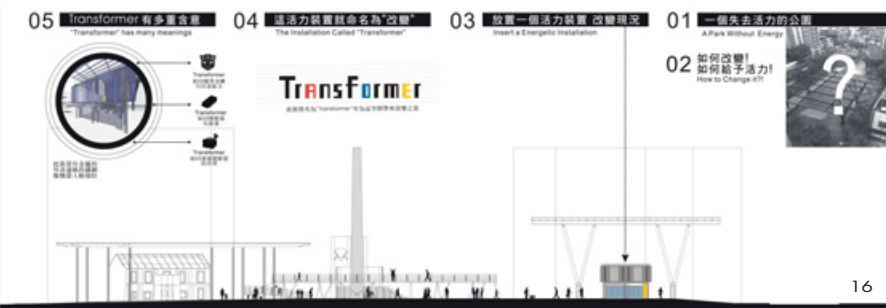
[Function] Activated the site

"Transformer" inside the park is not a "non-functional" art piece. It offers screens for public and commercial media uses. Projected images on the four "Urban Screens" provide impressions of the local past and projects memories of the city. A shielded spared interior space offers a small art gallery for the local community.

[Spirit] City memory in software interface

The city is the venue where citizens' collective memories are formed. Movies and images on urban screens in the park carry the most familiar impressions of local folks - how they eat, walk, entertain on a daily basis. The truest fragment of life warmly weaves people to the site and the tourists can submerge in an impression that belongs to the particular site.

Translated by Ray S.C.Chu & David Mark Riz



16