

A residence in culturally elegant taste

文韻躍然之所

設計者」中怡設計/沈中怡
參與者」楊珮珩 江易書 黃懷董
攝影者」李國民
空間性質」單層住宅
坐落位置」台北天母
主要材料」原木地板、木格柵拉門、檜木地板、米黃石材、白色人造石
面積」117坪
設計時間」2010年8月至10月
施工時間」2010年10月至2011年4月

Designer」CYS.ASDO/Chung-Yei Sheng
Participants」P. Y. Yang, Y. S. Chiang, H. S. Huang
Photographer」K. M. Lee
Category」apartment
Location」Tienmu, Taipei
Materials」wood floor, wood mullion slide door, Chinese juniper wood floor, beige color marble, Artificial stone
Size」386㎡
Design period」August - October 2010
Construction period」October 2010 - April, 2011

業主是一對留日的夫妻外加一位小孩。故對空間的偏好傾向自然所帶來的質樸溫潤感，而非過於前衛調性與冰冷材質，如鏡面、金屬等。由於業主收藏大量骨董家具與藝術飾品，此案的最大挑戰在於讓這些收藏品不僅便於收藏，亦帶來新的現代空間體驗，進而讓生活與空間有更真實的融合，而非一味地將看似衝突的生活物件隱藏於空間表層背後。

因基地位處北市天母地區公寓大樓的頂層。由於頂樓的退縮區域提供了難得的“空中花園”，讓使用者的居住空間能以自室內延伸至戶外的庭園，同時也為此案的每個角落帶來了光線和“如地面層般的居住生活體驗”。採訪」周巽莉

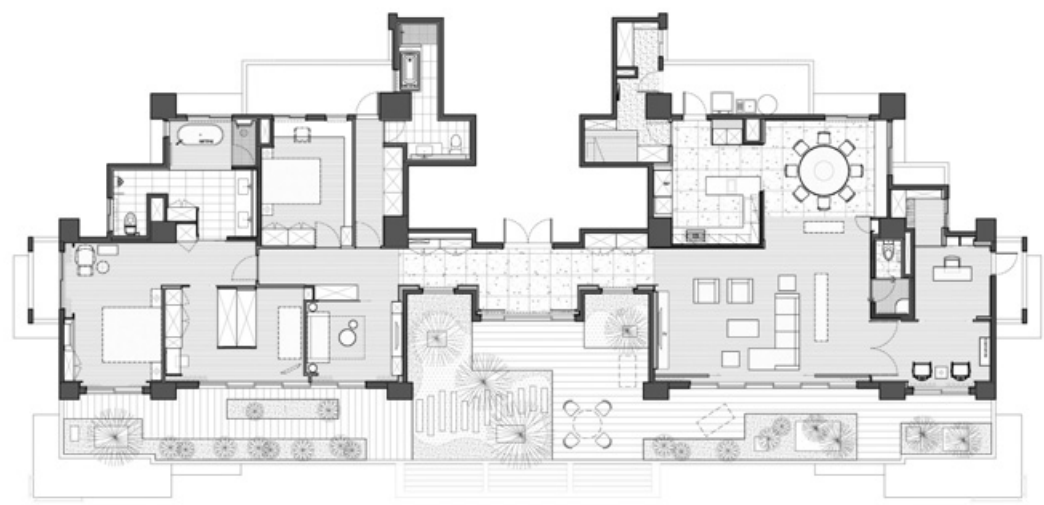
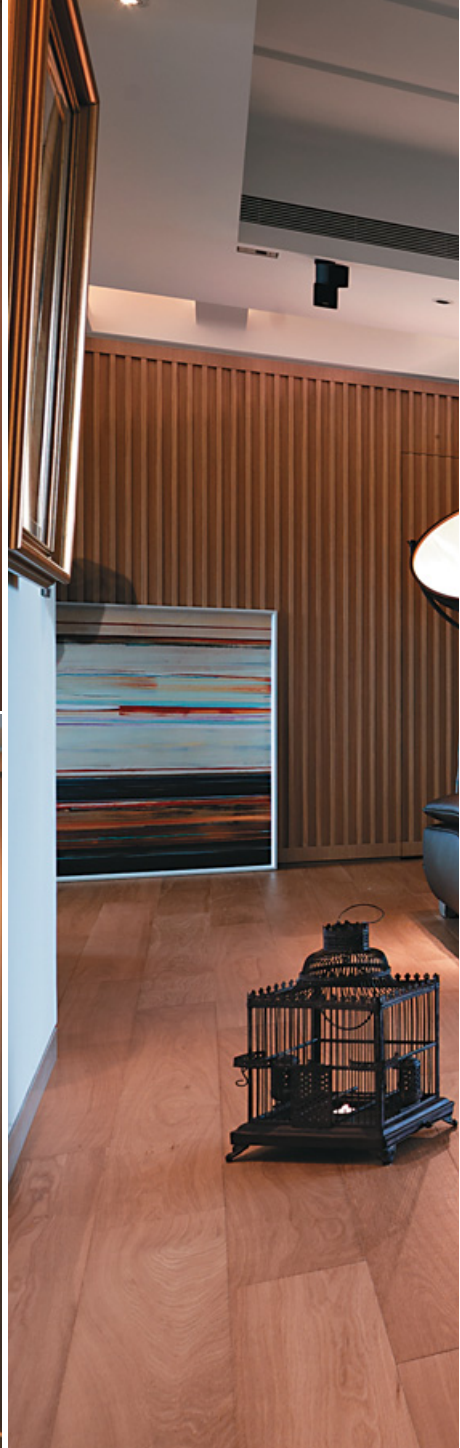
The client is a couple, educated in Japan, and their children. The family is most interested in natural pleasure and has a negative prejudice against metal and shining materials like mirrored surfaces. Their collection of large amounts of antique pieces and art works made the commission so challenging because these were not exhibition pieces but parts of daily life.

The project is hidden on the top floor of an apartment. The roof garden offered this unit an exceptional chance to expand its interior towards the exterior. It also has the great advantage that the apartment can accept light and better ventilation from all corners of its interior spaces.

1. 頂樓的退縮區域提供了難得的“空中花園”。2. 格柵拉門讓居住空間在視覺上有了彈性的延伸作用。

1. Roof garden offer exceptional space for this apartment 2. Life gains visual extension when the door is open





3. 木格柵拉門的設計成為此案空間的靈魂所在。4. 它可隨著時間、需求而調整開闔，創造不同的空間閱讀。5. 木格柵拉門以一種理性內斂的方式賦予空間隱性的文人質地。
 6. 平面配置圖。7.8. 開闔之間所延伸營造的穿透感，讓室內外環境有了最大的連結。
 3. Wood mullion sliding door is a central element in this residence 4. The space shows various moods according the open or closed nature of the sliding doors 5. Wood mullion door offers a different dialogue between space and activity 6. Plan 7.8. Spatial expansion is feasible when the door is open



設計概念

設計師沈中怡強調，在居住空間的設計規劃中，舒適性是極為關鍵的要件之一。為此，設計的思考反而是傾向內隱而非彰顯的，甚至細膩地藉由空間的整體佈局結合諸多的細節，以細膩的姿態與精緻感為整體空間鋪陳出一種耐人咀嚼的特質。也唯有統合了理性與感性的綜合感知，才能造就設計師所謂的「舒適性」。

如此案中，針對居住者大量的骨董家具收藏，沈中怡思考的是如何在新與舊、傳統與現代之間，取得一種平衡。於是，木格柵拉門的設計成為此案空間的靈魂所在，它以一种理性內斂的方式賦予空間隱性的文人質地。它可以隨著時間、需求而調整開闔，創造不同的空間閱讀，也賦予整體空間內斂而舒適的氛圍基調。

木格柵拉門的設計，在設計師以空間概念處理後，不僅成為了不同空間的過渡方式。功能上，又可將平面上的錢(禾字邊)角隱藏成為一密室，減低畸零空間角落。而開闔之間所延伸營造的穿透感，不僅讓居住空間在視覺上有了彈性的延伸作用，更讓室內外環境有了最大的連結。

沈中怡強調，木格柵的溫潤感結合了自然的光影，讓居住的整體氛圍結合了現代、古典與自然環境，創造一種混合且獨特的空間經驗。他嘗試提供居住者寧靜及人文的空間體驗，體現另一層次的生活質地。

Design Concept

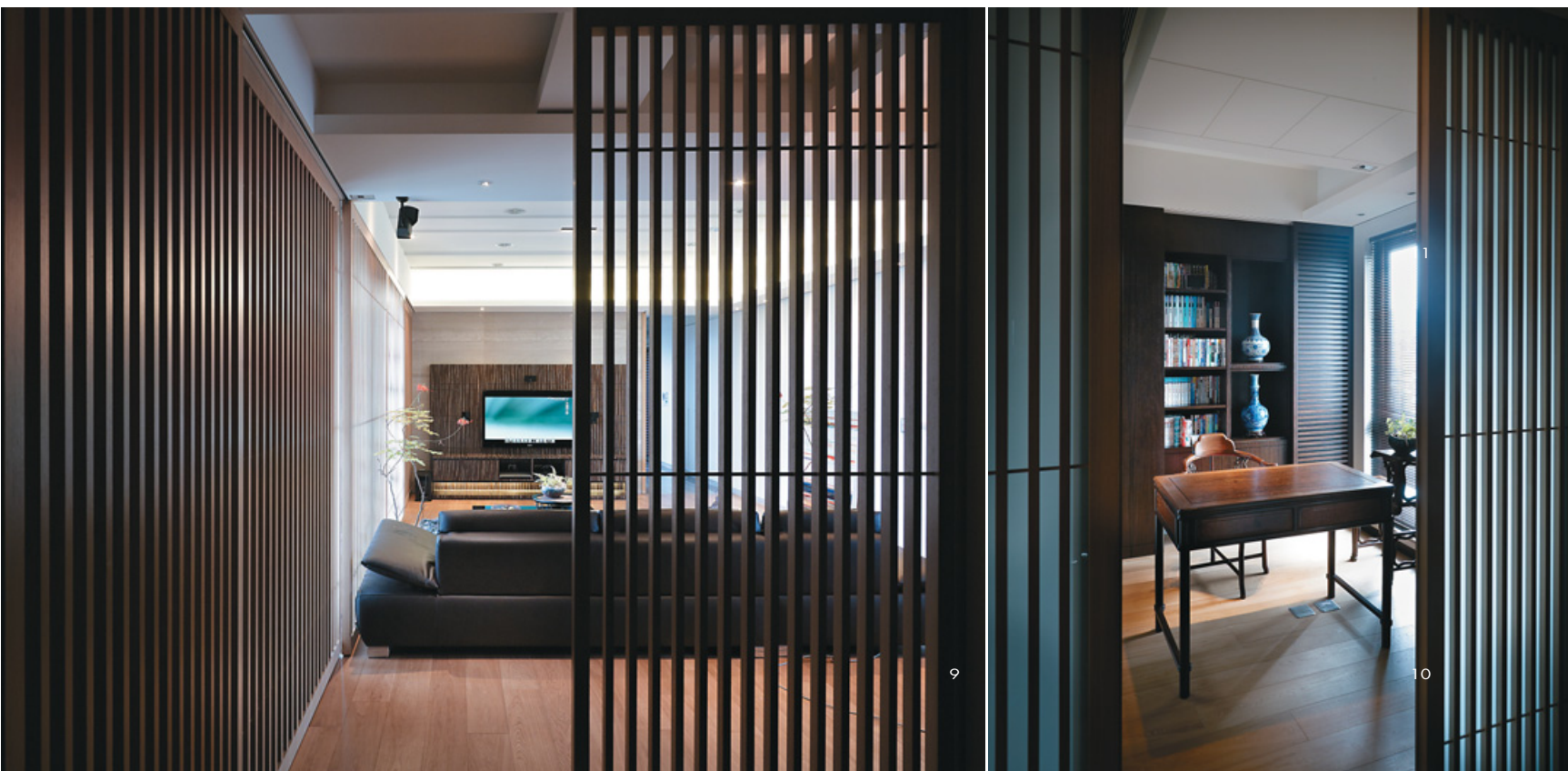
CY, the designer, said that the success of a residential design is based on how to make the dwellers feel comfortable. Based on this idea, this apartment starts from sensible design thinking derived from the careful layout of the plan and detail designs. Comfort is definitely a personal feeling and also a living condition with good physical attributes of ventilation and light.

While facing the precious antique pieces, CY had a different thought; he was not interested in showing their value in display boxes, rather he wanted to transform them as parts of daily life. The installation of a wood mullion sliding door was the central idea to make that transformation happen. Its status of whether open or close denotes a way that the antiques dialogue with the living or how life needs the pieces to integrate with daily activity.

The sliding door is a panel that makes things visible or invisible. Even for a real utilitarian reason; one sliding door hides an acute internal corner and transforms it with great visual interest as a vista view.

The mullion partition further gives natural light a sensible expressive mood. It gives the space a very touching quality that belongs purely to the family and its respective members.

9. 居住的整體氛圍結合了現代、古典與自然環境。10. 書房，讓屋主收藏的骨董家具與生活空間有更真實的融合。11. 過道，自然的光影創造一種混合且獨特的空間經驗。
9. A great dialogue between high fashion and nostalgia, man-made and nature 10. Reading room is a place where antique objects are completely mingled with real life 11. Pathway and its lighting experience





12



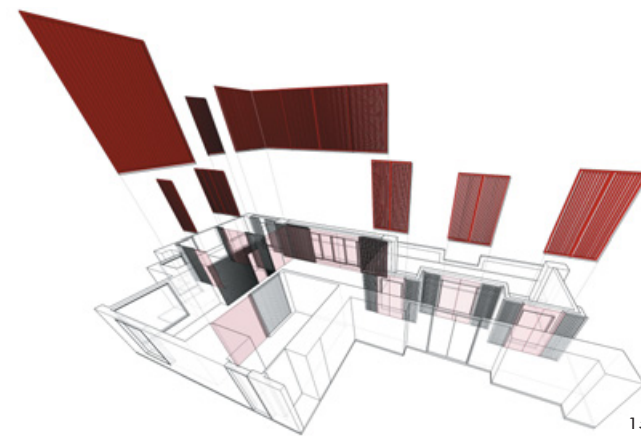
14

建材分析

原木地板：賦予整體空間內斂而舒適的氛圍基調。
 木格柵拉門：作為空間的靈魂所在，一來連結不同空間。二來延展了室內空間與戶外環境的關係。可以隨著時間、需求而調整開闔，創造不同的空間閱讀。
 檜木地板：用於主臥室浴室。
 石材、人造石：用於牆面、天花板等，賦予空間一些豐富的色彩表現。

Material Analysis

Wood floor: the color and texture of solid wood gives the space a sense of tranquility
Wood mullion sliding door: it connects space in a gentle way; it also provides an extension from the interior to the exterior. The unique feature of the system is that it offers a spatial expression of what the family needs.
Chinese Juniper wood floor: this material is only used inside the master bathroom
Stone: artificial stone is used for cladding over wall partitions and some ceiling parts. This material tries to enrich the spatial expression with color.



15

12. 過道，自然的光影創造一種混合且獨特的空間經驗。13.14. 私密空間裡的小型起居間。15. 木格柵拉門—Diagram。16.17.18.19. 主臥室裡衛浴間與更衣間的配置關係。
 12. Pathway and its lighting experience 13.14. Small family room in an intimate mood 15. Mullion system and its design study 16.17.18.19. Bedroom, bathroom and walk-in closet



13



16



17



18



19