

Leisurely Movement

悠境樂章

設計者」 呈境室內裝修設計有限公司 / 袁世賢
參與者」 吳政鴻 阮庭筠
攝影者」 林福明
空間性質」 住宅
坐落位置」 台灣
主要材料」 石材、木皮、金屬、鏡面、布藝、皮革、磚
面積」 110 坪
項目年份」 2020 年

Designers」 Next Design Group. / Shi-Xian Yuan
Participant」 Zheng-Hong Wu, Ting-Yun Juan
Photographers」 Fu-Ming Lin
Category」 Residence
Location」 Taiwan
Materials」 building stone, veneer, metal, mirror, fabric, leather, brick
Size」 363.6m²
Project year」 2020



屋內材質的拼接、線條的切割化作五分譜的線條，
窗外飄盪的雲朵好似一顆顆音符，透過理性與柔性的交織，譜出一首精彩的樂章。

「悠境樂章」坐落於台北精華地區，位於42層高樓，擁有遼闊的景觀，望向窗景就能觀賞陽明山山景與雲彩飄逸的景緻。袁世賢設計師提及，此案屋主與呈境設計之間不僅相識許久，也已有多次合作經驗，但此次的住宅不同於以往，是希望能讓年邁的母親、女兒與孫子一同居住的空間，所以在平面佈局上更加細心考量業主需求，如何將空間達到既共享又獨立是整體設計的核心概念。



和諧的動人旋律

屋主一家人原本長期居住在上海，購入此住宅是希望能讓三代同堂，共享天倫之樂。「悠境樂章」為一合併戶，設計師透過重新規劃佈局，將空間分為三大區域：公共空間與孝親房、大女兒一家人的空間、以及主臥室與小女兒房。

進入空間，首先映入眼簾的是予人虛與實印象的客廳。客廳一側是大台北的城市景觀，大片落地窗景將山與天囊括在框景之中，不論清晨時分，抑或是傍晚日落，皆演繹著動人的景緻；另一側則是實體的電視立面，透過石與木兩者的拼接，再藉由比例切割與線條分割，最後加上金屬點綴的脫開手法，讓場域之間有了明確的劃分，卻又能藉由光線的穿透彼此串連；天花板選用深色調木皮搭配鍍鈦板形成水平線條，為大氣沈穩的空間注入金屬反射的虛幻光澤。電視立面上方的鏤空設計，將光線引入餐廳同時引導著動線，圓形餐桌與木材的溫潤，都傳達著家的圓滿與和樂氛圍；而體貼業主年邁的母親，將孝親房規劃在公共空間中，考量動線在衛浴、臥室均採用無障礙設計，讓活動更加安全無虞。

相比公共空間的深色沈穩，私區的臥室選用予人舒心放鬆的淺色調。將大女兒一家人的區域劃分在入口處的另一側，並預留了一間小孩房，讓大女兒一家人可以享有私人空間，生活不受打擾；二女兒的房間則與主臥室相鄰，大、小女兒的臥室皆以溫潤

Shi-Xian Yuan



呈境室內裝修設計有限公司 / 袁世賢
台灣 大葉大學空間設計學系兼任助理教授
台灣 室內專技協會 (TnAID) 秘書長
2020 台灣室內設計週執行長
呈境設計 NEXT!
設計沒有停止的時候，設計必須不斷的開始，在不斷的開始中找尋各種可能性。空間的呈現也非絕對有固定的型式，可能不斷被創造，空間不斷被展現。空間的形成是由人類的立體感知而建立，生活的經驗、美學的傳達、材質的變化、光影的引入是使空間轉換成更為豐富的表達。
2020 iF DESIGN AWARD
2020 iF DESIGN AWARD
義大利 A'DESIGN 設計大獎 - 銀獎

Next Design Group. / Shi-Xian Yuan
Associate Professor, DYU
Secretary, TnAID
Director, Taiwan Interior Design Week
Design is an endless process, with seemingly no end when a project starts. Also there will never be an absolute solution for any project, a good designer is always wondering and searching. Next Design Group. believes that spatial power comes from the internal message rather than the stylistic type; such as we always love to use to create the touch of the space.
2020 iF DESIGN AWARD
2020 iF DESIGN AWARD
2020 A'DESIGN Silver

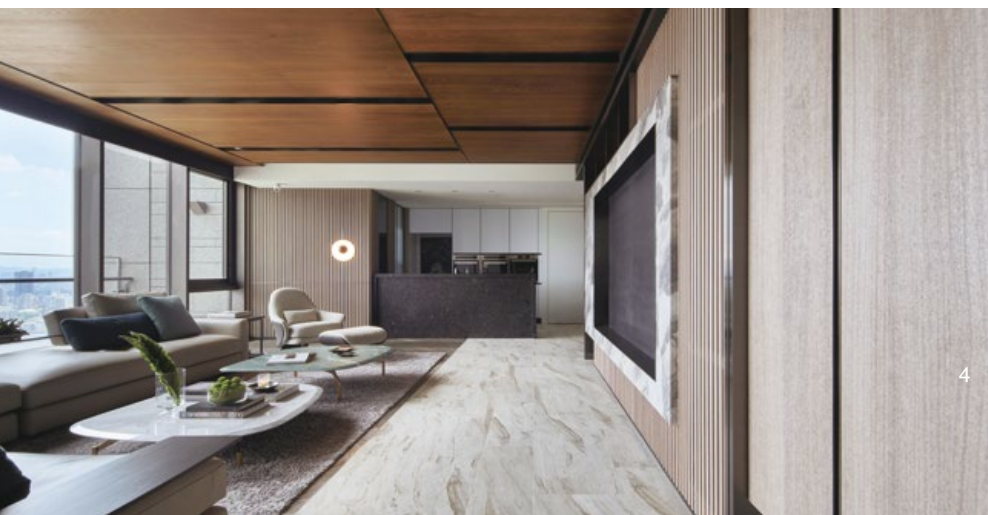
1. 「悠境樂章」坐落於台北精華地區，位於42層高樓，擁有遼闊的景觀。
2. 戶外陽台不論清晨時分，抑或是傍晚日落，皆演繹著動人的景緻。

1. This apartment is on the 42nd floor with a great view. 2. Balcony is a good spot to enjoy the sun setting beauty.



3. 進入空間，首先映入眼簾的是予人虛與實印象的客廳。4. 客廳一側是大台北的城市景觀，另一側則是實體的電視立面。5. 透過電視立面讓場域之間有了明確的劃分，卻又能藉由光線的穿透彼此串連。6. 平面圖。

3. Ample view of the living room is both situated in the space and exterior cityscape. 4. Living room directly casts a view of Taipei city. 5. TV screen sets the border between the living room and dining room, where natural light can permeate both spaces. 6. Floor Plan.



4

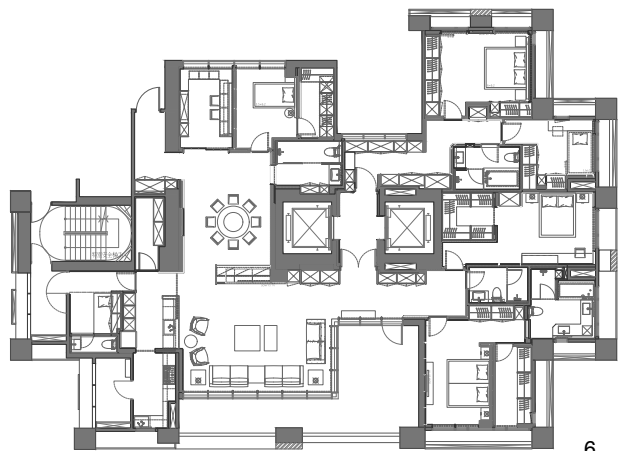


5



的木質調輔以淺灰色系，再以鮮豔的軟裝佈置點綴，並設有獨立的更衣室，讓臥室成為彼此獨立又私密的場域；主臥室則是透過天花板的金屬收邊、床頭錶布以及設計感強烈的家具，希望為空間增添一點典雅質感。

呈境設計以屋主喜愛的石材、木材風格為基底，為此案添加更多的金屬建材，希望透過內斂的手法為屋主創造不同於以往感受到的設計氛圍。袁世賢設計師說，對於屋主來說空間滿足了生活機能，但對於設計者來說，空間是美學傳達的媒介，希望居住者在遊走的過程中，感知室內設計與室外風景的相輔相成；如同右手創造的音符旋律，需要有左手優美的和弦，才能完成一段迷人的樂曲、譜出一首幽靜的樂章。採訪 | 歐陽青昀





7



8

7. 電視立面上方的鏤空設計，將光線引入餐廳同時引導著動線。8. 圓形餐桌與木材的溫潤，都傳達著家的圓滿與和樂氛圍。9. 書房。
7. Hollow spot above the TV screen allows natural light to penetrate within. 8. Round dining table symbolizes family gathering. 9. Reading room.





10



11



12

10. 主臥室則透過天花板的金屬收邊、床頭錶布以及設計感強烈的家具，希望為空間增添一點典雅質感。11. 二女兒的房間與主臥室相鄰，以溫潤的木質調輔以淺灰色系。12. 將大女兒一家人的區域劃分在入口處的另一側。13. 大女兒房。14. 設有獨立的更衣空間，讓臥室成為彼此獨立又私密的場域。
10. Master bedroom is furnished in a stylistic manner. 11. Younger daughter's room is immediately adjacent to the master bedroom. 12. Eldest daughter's room is in an individual quarter. 13. Eldest daughter's bedroom. 14. Each room has its individual walk-in closet.

Situated right in a primary location of Taipei Center, this 42nd floor apartment enjoys mountain views and the amazing cityscape. Designer Yuan said that he had been acquainted with the client family for a while, and the commission is not commercial but rather for a living space that will house three generation of family members together. To take care of every member's needs while allowing each others privacy to be secured was the first mission to be achieved.

Harmonious Melody

The family used to live in Shanghai, and moved back to Taipei and asked that the entire family be reunited. This apartment joined two units together and is divided into three parts: one the mother's section, the second is for eldest daughter's family, and the third is for client's living quarter and youngest daughter's bedroom.

A huge living room dominates this apartment with great views to look down towards the Taipei cityscape. 270 degree view reveal the daily performance of sunrise and sunset providing breathless moments. The opposite side of the window is a solid wall clad with marble and wood mixed good proportion. Fine details divide the materials and provide empty spots to allow light to penetrate. The ceiling design is composed of meticulous craftwork. Veneers meet with titanium plated boards to form an grandiose scale in a geometrical pattern that matches the ample living space. A round dining table proclaims a traditional symbol to signify family gatherings. The elderly mother's room adopts barrier-free design to assure easy accessibility to all facilities and safety.

The private zone has an ambience quite different from that of the public zone. The eldest daughter's family quarter is divided out from the main entrance to yield an independent zone. The youngest daughter's bedroom is neighbors with the parents' room. The daughters' rooms are both furnished in wood and fabric in light colors and each has an individual walk-in closet. The master bedroom is equipped with designer's furniture pieces and the ceiling displays a formation trimmed in metal details in an elegant manner.

Marble is used extensively in the public quarter yet an intimate sensibility is flavored with wood and trendy metal details. A good design, Yuan claims is to both quench the needs as well as provide harmonious ambience for living happiness.

建材分析 Material Analysis

1. 公共空間採用深色沈穩的設計，以屋主喜愛的石與木為主要建材，再加上金屬點綴，透過內斂手法呼應業主的性格。2. 私區的臥室則選用予人舒心放鬆的淺色調，溫潤的木質加上鮮豔的軟裝佈置點綴，增添臥室的舒適氛圍。

1. The public zone appears to be ample and grandiose; marble and wood dominate the major surface materials while metal member attracts light in a joined positions. 2. Private zone is furnished in a more casual way; light color and wood furnish the major space.

溝通重點 Communication Note

1. 此案希望能讓年邁的母親、女兒與孫子一同居住的空間，所以在平面佈局上設計師更加細心考量業主需求，如何將空間達到既共享又獨立是整體設計的核心概念。2. 以屋主喜愛的石材、木材風格為基底，為此案添加更多的金屬建材，希望透過內斂的手法為屋主創造不同於以往感受到的設計氛圍。

1. This apartment houses a three generation family; the challenge of the design was to provide proper space for living while maintain everyone's privacy. 2. Marble and wood are the two main materials appreciated by clients. Metal members are used in the joint details.

