

# Daily Dialogue in Painting

## 日常對畫

設計者」覺知造所室內裝修有限公司 / 胡廷璋  
參與者」鍾雨潤  
攝影者」嘿！起司  
空間性質」住家  
坐落位置」台灣  
主要材料」礦物塗料、木皮、鐵件、石材、和紙榻榻米、紗簾、明鏡  
面積」32 坪  
項目年份」2019

Designer」 Daniel Hu Interior Design Studio / Daniel Hu  
Participant」 Rain Chung  
Photographer」 Hey! Cheese  
Category」 Residential  
Location」 Taiwan  
Materials」 mineral paint, wood veneer, metal, stone, rice paper, tatami mats, sheer curtain, mirror  
Size」 106m<sup>2</sup>  
Project year」 2019



每個人的心裡都有一幅美好風景。  
當畫中的餘白蔓延到整個空間，  
人也正如走入畫境，置身於心靈嚮往的風景裡。

愛情是很美好，但卻無法恆溫，當經歷人生歲月打磨之後，從中淬煉出來的，或許不是火熱的燙石，而是溫潤如玉的理解。

設計師胡廷璋的作品，是一座銀髮宅，屋主夫婦在兒女成年離巢、事業逐漸交棒後，開始緩下步伐回到最初建立家庭的兩人相伴關係，他以溫柔、理解的角度構思空間，透過實境探討攜手一生的夫妻，步入銀髮之年的美好距離與互重理解。

### 尊重理解 是最深的愛

回到設計的原點，設計師先梳理屋主內心真正需求，認為：「攜手一生，一個人能給對方最深的愛是什麼？我想不是將一切都依托附屬在對方身上，而是尊重各自靈魂的獨立性，同時幫助彼此成為更完整的個體。正如，我愛你，所以願意讓你保留無須為我改變自己的權利。」而如何重視人與人之間需要的舒適距離，既不會忽視對方，又能享有個人空間、有彼此陪伴的安全感，正是這座家居的規劃核心。

設計師用具穿透感的視覺與動線強化居住者彼此聯繫，讓同在家中的兩人可以看望、感受到對方的存在，並且享受各自的獨立空間。他指出，單純的夫妻起居空間其實無需劃分複雜格局，應以寬闊、開放的型態，讓兩人可以彼此照應。因而，此作十分強調寬敞動線、打開所有隔間，必要的隔門也儘量採用可收攏的滑軌型式，維持室內通透開放感受，令採光與氣流可以穿梭無阻。此外，空間裡大部分的機能設施均隱身於櫃牆之中，只在使用時呈現，將一切化零為整來放大空間體感，天花板也以導圓線條減少空間中的陰角，令光照能柔和漫開，同時降低瑣碎線條造成的視覺干擾，呈現一種素樸清雅之美。

另項重點，是設計上十分重視男女主人的內在需求，由於男主人喜愛影音享受，而女主人偏好靜態活動，因此客廳採用島型沙發配置，以雙向面牆的型式，讓兩人可以背依而坐、輕鬆交談，同時各自享有影音、賞畫等樂趣。若是希望享受各自獨立空間，臥房也規劃一處較隱密的沙發區，能讓兩人分區活動，各自盡興沉醉在影音、閱讀裡。

## Daniel Hu

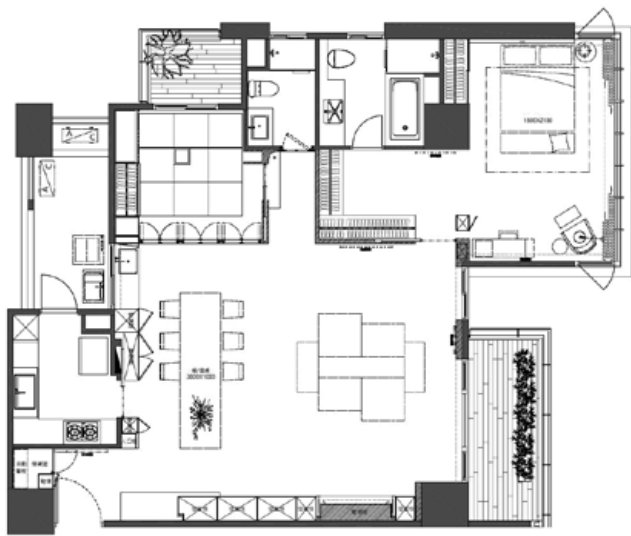


覺知造所室內裝修有限公司 / 胡廷璋  
法國巴黎高等藝術管理學院 ESDI 室內建築系  
認為空間應使人更容易進入當下的感受與存在，而非造成阻礙。  
作品擅長將美感融入生活，簡化與日常無關的線條與設計，回歸人類所需空間的最純粹型態。  
建築物室內設計 & 工程管理乙級技術士  
2020 德國 iF Design Award 空間設計類別 金質獎 · 2019 台灣 TID Award 商業空間 金獎 · 2019 金騰獎 年度最佳商業空間 金獎 · 2019 義大利 A Design Award 銀獎 · 2019 韓國 K Design Award · 2019 香港 APIDA 亞太室內設計獎 · 2019 台灣金點設計獎

Daniel Hu Interior Design Studio / Daniel Hu  
CREAPOLE-ESDI ARCHITECTURE  
INTERIEURE DIPLOME  
It is believed that space should facilitate users to enter an emotional state and presence, rather than become an obstacle.  
Hu is an expert on integrating aesthetic beauty into life, excluding excessive lines and designs that have nothing to do with everyday life, and returning to the purest patterns of space that humans need.  
2020 Germany iF Design Award Interior Architecture Gold medal · 2019 Taiwan TID Award Commercial space Gold award · 2019 Jin Tang Award Best Commercial space Gold award · 2019 Italy A Design Award Silver award · 2019 Korea K Design Award · 2019 Hong Kong APIDA Interior Design Award · 2019 Taiwan Golden Pin Design Award

1. 玄關，掛畫與空間背景一致，構成畫中畫的趣味。

1. Entry vestibule with matching background painting, hidden sense of humor.



2

2. 平面圖。3. 廳區雙向面牆的島型沙發，夫妻可以共坐，同時享有各自興趣。4. 空間裡的機能設施均隱藏在櫃牆之中，設備僅在使用時呈現。5. 天花與壁面的礦物塗料帶有顆粒與坑洞的自然感，地面的塗料加強硬度保護與防水，塗料刷痕為空間帶來溫度。

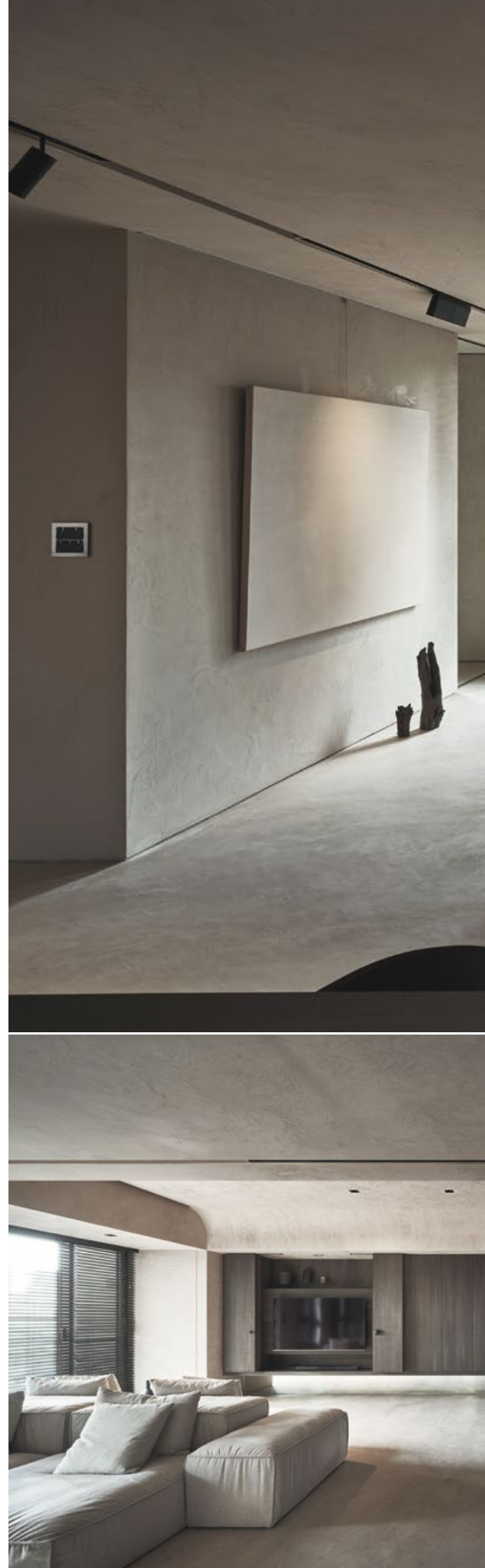
2. Floor plan. 3. Island style sofa provide flexibility. 4. Daily use devices all carefully placed in concealed cabinets. 5. Floor finish focused on humidity proofing; ceilings and walls finished with texture rich mineral paint for natural sensitivity.

## 人入畫境

設計師分析，人所需要的居住空間可分為三個層次；第一種是基本需求的照顧，像是儲物、水電、空調等完善規劃；第二種是個性化表現，比如文化、質感、空間功能的展呈；第三種則是精神居所，談的是關於內在深層的嚮往、感動與滿足，正如這座家居的本質精神。在設計溝通期間，設計師回顧了女主人的兒時心願，希望藉由空間觸動女主人重拾畫筆，享受創作樂趣，他以「人入畫境」的思考，感性地實現女主人的夢想。

在佈局上，餐廳設置 3 米 6 長桌，除了足以作為各種聚會之用，寬敞的桌面也提供了可盡興創作的平台。此外，長桌旁劃一座開放式和室，除了是茶會延伸的場地，必要時也可作為臨時客房使用。

另一特色，是全案採用淡米灰色調為主，賦予空間溫暖柔和的氣息，且天、壁、地大量採用礦物質感塗料，來統和整體一致性與 timeless 的自然感，在施作時特別強調塗料的手工刷痕，令硬體呈現濃郁的手作溫度，也隱隱呼應著繪畫筆觸，藉以表達女主人的心之所嚮。而所有空白的牆面都掛上亞麻質感油畫框，令畫布上的底色與手工刷染痕跡一致，就像畫中畫般互為相融，人在空間裡有如置身於畫境之中，在凝視環境裡心緒逐漸沉澱冥思，慢慢浸入美好情緒，就像踏入畫境般悠遊自得。採訪 室內雜誌編輯部





3



4



5



6. 天花板用導圓造型減少空間中的陰角，讓光線柔和地漫入空間。7. 長達 3 米 6 的長桌是屋主與親友同樂的聚點，也是日常創作的畫桌。8. 長桌與茶室之間規劃泡茶用水槽，方便換水與洗滌。9. 半開放的茶室空間。

6. Curved ceiling to minimize dark corners and gently distribute light into space. 7. Lengthened multipurpose table for daily artwork making or occasional family gathering. 8. Dedicated hand wash sink for tea making. 9. Semi-opened tearoom.

Love is passionate and delightful, but the passion can hardly be sustained. Only a relationship can endure the challenges throughout time, not like glamorous jewels but rather more like graceful warm jade with understanding in between.

This dwelling project was designed by Daniel Hu for retired empty-nesters. They are phasing out from the business world and slowly stepping back into a two person small family relationship. Hu gently and thoughtfully designed the space as a reality check to re-examine new/old relationships, by celebrating the beauty of distance and understanding within the relationship.

### Respect and understanding is the deepest love

Back to the design origin of the project, the designer first combed through the real needs of the owners and concluded: "For a lifetime, what is the deepest love one can give to each other? It is not about reliance on each other, but rather respecting the independence of each other's souls and helping each other become more complete individuals. "Because I love you, I willingly let you reserve the right not to make changes and compromise yourself for me."

Therefore, the design attention was focused on what is the comfortable distance between an individual's need, not to ignore or avoid each other, but at the same time enjoy each other's company with a sense of security, which is the fundamental influence on the project.

The designer used circulation and visual penetration to strengthen the connection between the two dwellers, so they can see and sense each other's presence, yet enjoy their own independent space.

Hu pointed out that the couple's living space in fact does not need complicated space separation, within the open floor plan so the two people can take care of each other. Therefore, the main theme of this project was to maintain a transparent open feeling with a spacious circulation and the ability to open up partitions, so natural light and air can flow freely. In addition, most of the functional amenities are concealed within the cabinet walls, only present when in need. Further to maximize the sense of space, the curved ceiling reduces dark corners and also gently guides the light into the space thereby minimizing unwanted visual interference. It presents a simple and elegant beauty.



### 建材分析 Material Analysis

1. 礦物塗料：天花與牆壁。2. 防水礦物塗料：地坪。3. 金屬礦物塗料：門片。4. 染色胡桃木皮：櫃體。5. 人造光源採用可自由調光的燈具組與投射畫布的軌道燈。

1. Mineral paint: ceiling and wall finishes. 2. Water proofing paint: floor slab finish. 3. Metallic paint: door panels. 4. Stained walnut wood veneer: millwork. 5. Dimmable light fixtures and track light wall washer fixture light sources.

### 溝通重點 Communication Note

1. 居住成員為退休夫妻兩人，子女皆已成婚搬離開家。男主人重視影音，女主人希望能在在家閱讀、作畫、泡茶、插花。需要劃分電視區與閱讀區。2. 希望規劃臥榻茶室，平日方便泡茶同時作為臨時客房。3. 重視收納機能。希望臥房不要封閉，居家讓人放鬆。4. 動線要保持寬敞，主臥房與入口動線寬度必需符合無障礙的迴轉空間。

1. Clients for this project are a retired couple with distinctive types of daily activities, quiet reading vs. media entertainment, therefore separate independent spaces were required. 2. Provide a Japanese style tea room for regular use that can also function as a guest room. 3. Prioritize storage functionality, and bedrooms should be open plan for relaxation to avoid sense of confinement. 4. Spacious circulation, entry sequence into master bedroom should meet barrier free accessibility design requirements.





A great amount of design effort was focused on recognizing and fulfill both the owners individual personal needs and daily activity preferences. The living room features an island-style sofa, a unique seating arrangement that allows the couple either to sit side by side sharing conversations, or enjoy different media entertainment from different orientations. If further privacy is needed, the bedroom/den space can be used for personal reading or watching films separately.

### Step into the painting

Designer Hu commented the there are three level of needs that human search for in their dwelling space, First is to meet basic daily functions and protection, like the proper design of air and utilities' distribution; the next level is the space can reflect personal taste, and the ultimate level is to fulfill inner spiritual desires. That is the essence of this project.

During design communication, the hostess revealed her childhood wishes. With the "step into the painting" as a design notion, via space, Hu wished to inspire the hostess to pick up the brush, and enjoy the creative pleasure of creating art, as a realization of her dream.

The plan layout, features a 3.5 meter long dining table which performs the double duty of hosting a variety of parties but most importantly provides a platform for artistic creation. Adjacent to the long open space is the Japanese style tea room, as an extension of the gathering space. It can also can be converted to a guest room when in need.

Another project feature is the whole house uses a light rice grain color gray tone-based wall coating, giving the space a soft and warm charm. The abundant mineral texture rich coating has an overall consistency of timeless natural sense. During the finish coating application, a special emphasis was placed on the hand brushing strokes, echoing the art painting strokes in the hostess's dream. Walls are further decorated with linen texture oil painting frames with matching textures and color, blending the painting and reality. People in the space are as if they were in a picture gazing at the surroundings and gradually merging into meditation. They are immersed, just like stepping into a picture, in tranquility and delight.



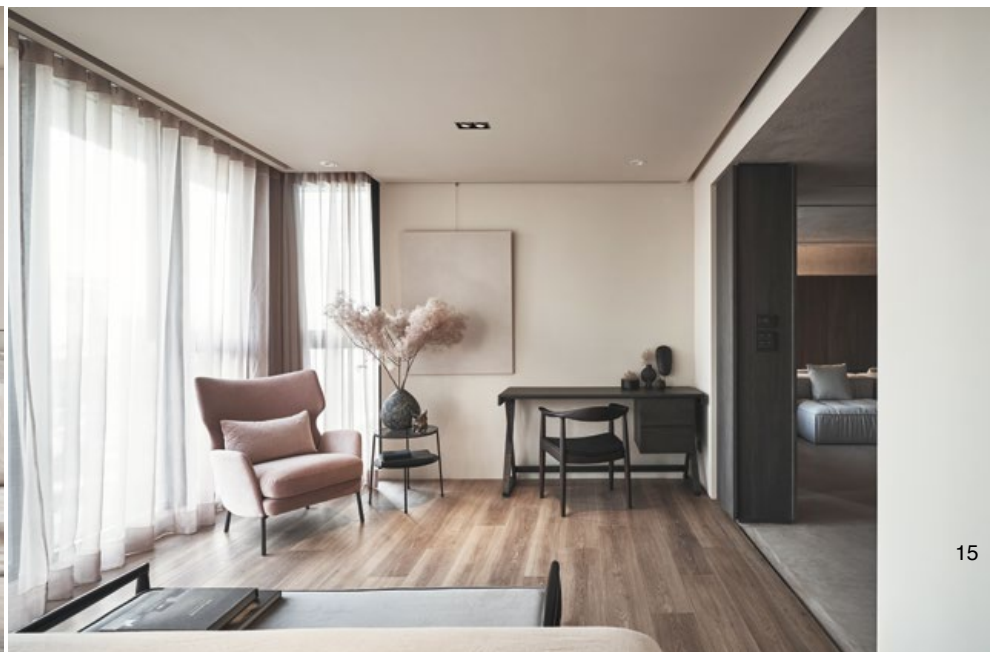
13

10. 半開放式茶室提供個人獨享的品茗空間。11. 茶室門片開啓後能與鄰近長桌延伸使用，作為聚會場地。12. 打開所有的牆面，令空間裡的採光與氣流自由穿梭。13. 主臥房，延續清雅樸美的風格。14. 床頭旁的壁櫃施作抽拉式層板，可作為臨時的置物平台。15. 主臥空間的門片收攏後，能與客廳保持視覺穿透感。

10. Semi-enclosed tearoom to enjoy personal time. 11. Expandable tearoom can be opened up for larger group gathering use. 12. Open plan allows natural light and fresh air free to flow through the space. 13. Master bedroom, continuation of the overall graceful style. 14. Bedroom headwall custom-made millwork with retractable surface. 15. Open up telescopic door panels to continue the visual connection between master bedroom and the main living space.



14



15