

The Villa at Number 61

61 號別墅

設計者 如莫空間設計（上海）有限公司 / Marine Bois 張睿 張韜
攝影者 雲眠
空間性質 住宅
坐落位置 中國
主要材料 橡木、馬賽克、訂製皮革、大理石、訂製壁紙、金屬
面積 175 坪
項目年份 2020 年

Designers RooMoo Design Studio / Marine Bois, Ray Zhang, Tao Zhang
Photographer Xiao Yuuuun Studio
Category Residence
Location China
Materials oak, mosaic, customized leather, marble, customize wall paper, metal
Size 580m²
Project year 2020



看似古典質樸的歐風別墅，被注入了東方獨有的人情溫度，東西交融而成的新法式風情，為一家人帶來豐富的居住體驗。

斜尖的屋頂、石頭磚瓦砌成的外牆，歐洲鄉村小鎮的瓦房總給人一種愜意又溫馨的氛圍。業主選擇四周環繞花園植栽、泳池，風景宜人的別墅，希望為一家人打造一個擁有西方倘佯自然的環境與東方富有人情溫度的住宅空間。如莫設計團隊表示，別墅設計對建築本身的方位、朝向、院落，以及室內、外環境的水平和垂直方向的考量都十分重視，所以他們透過對空間尺度以及動線的重新梳理，不僅串連起室內外場域，同時也讓此處成為真正的親子趣味空間。

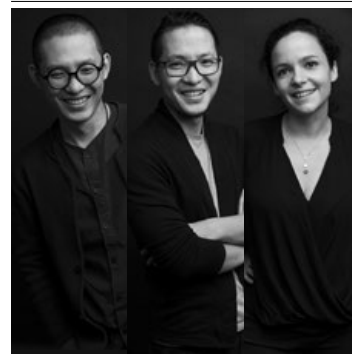


藏匿於細節中的法式語彙

這棟別墅共有四層樓，樓層依照機能布局。1樓是家人日常活動的公共空間，2、3樓為私密的臥室區域，地下層則設置娛樂活動室，而室外庭院被建物劃分為南北兩側，南側的泳池、花園是孩子的娛樂場地，而北側則在房屋的陰影下形成一個天然的庇蔭，成為一處寧靜的散心之地。步入別墅的前廳，視線會隨著天然實木與大理石交錯拼貼的花紋地面，自然引導到位於中心的客廳，將兩組淺卡其的一字型沙發對稱排列，浸染在橘橙色的空間中，與背後窗景的花園綠意，形成了一幅如藝術般的畫作；為了不影響視覺焦點，客廳天花板採用簡潔的手法處理，讓內院景觀成為此處唯一的主角。

客廳的兩旁分別是側廳與餐廳。不同於暖橘色調的客廳，側廳選用深藍色系形成對比，兩者之間透過平開的隱藏門分隔，一邊是日出、一邊是深夜，相異的氛圍提供居住者不同的使用需求，並營造另一種愜意的放鬆感。另一側的餐廳藉由三面開窗的設計，將內院景觀盡收眼底，不管是用餐、聚會，都能讓使用者更加愜意；此處的天花板保留原始建築的斜尖屋頂構造，挑高空間以及梯形的形狀透過陣列的木條網狀結構設計，不僅豐富本身的表面肌理，木質的溫潤色彩也增添柔和氛圍。設計團隊為了讓居住者能充分享受到陽光與景色，將開放式廚房、餐廳、客廳等主要的公共區域規劃

Marine Bois, Ray Zhang, Tao Zhang



如莫空間設計（上海）有限公司 / Marine Bois 張睿 張韜
RooMoo 設計工作室由張睿、張韜和 Marine Bois 三位設計師於 2015 年在上海成立，工作室的專業業務領域涵蓋了建築、室內與產品設計目，從每個項目開始直到完成，團隊都堅持保持設計的完整性和質量。基於對於本土文化及國際化的理解，團隊喜歡游走在這兩者之間，探索項目的突破點，並用新的當代視角挑戰傳統界限，在現代設計中重新運用當地文化。

RooMoo Design Studio / Marine Bois, Ray Zhang, Tao Zhang

RooMoo Design Studio has been founded in Shanghai by three designers Ray Zhang, Tao Zhang and Marine Bois in 2015. Studio is based on a definite relationship between architecture, interior and product design, which has been a driving force to create projects with subtle transitions between these disciplines. We pursue the integrity and the quality of the design since the beginning of a project until accomplishment. The understanding of the local culture and of internationalization, make us explore the critical point in between. We know how to challenge traditional boundaries to new contemporary perspectives and also how to re-use local culture touch into modern design.

1. 使用皮革連接橙色玻璃和木框架，不同材質之間的咬合，為其增添有趣對話。2. 別墅位於南京的浦口，四周環繞花園植栽、泳池，風景宜人。

1. The structure is using a leather belt to attach the glass to the wood frame. 2. The villa which is located in Nanjing, China, is surrounded by a nice garden and a swimming pool.

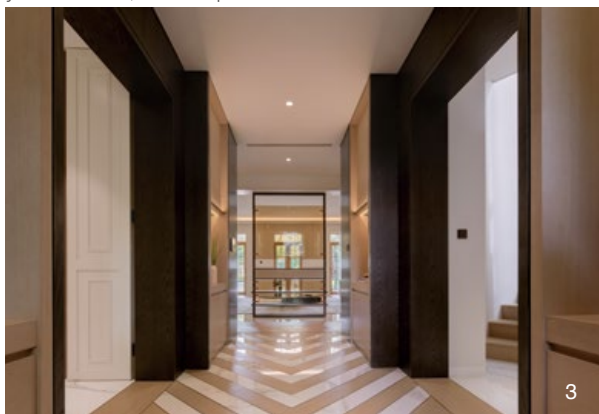
在房屋的南側，讓父母能輕易掌握孩子動態，和在院中玩耍的孩子們互動。

2、3樓是提供休憩、睡眠的靜區，透過在不同材料中揉入更多色彩的變化，來體現每間臥室的特質以及每位使用者的喜好。主臥室以白色牆面，搭配具深淺變化的駝色地毯、金色質感的窗簾，更衣室與衛浴內也選用橙色的玻璃，延續公共空間的暖調氣息；女兒房在壁紙和馬賽克磁磚中，藉由排列的變化，形成了由粉到黃的漸變色彩，柔和空間氛圍；兒子房則在牆壁、天花板和馬賽克磁磚中選用了色澤鮮明的綠松石色，拉開和其他臥室相異的色彩語彙。而地下層作為娛樂共享空間，在昏暗的環境中堆疊上黑灰色的染色橡木作為基調，更滿足影視觀賞、收藏展示等活動需求。

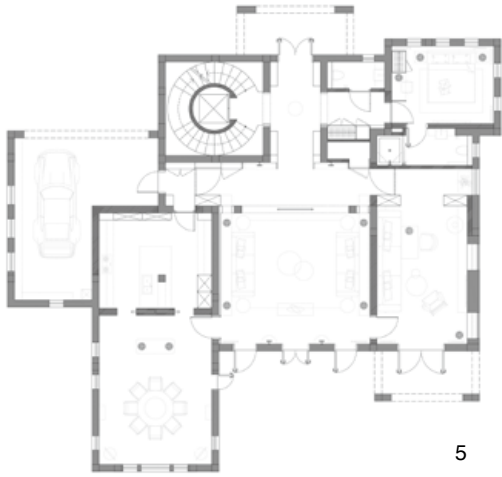
設計團隊表示，業主希望別墅能優雅又不失奢華，以法式風格為方向，又希望跳脫舊有法式風格的既定印象，為此，此作定位為「新法式」風格，透過傳統材質與新材料、工藝的結合，從設計細節和質地來詮釋。其中，最具特色的是經過簡化的法式石膏線，藉此傳達出法式生活的浪漫與精緻；而量身訂製的隱藏門把手、個性化壁紙、漸變馬賽克圖案以及各個空間中的地毯，都微妙的和整體法式風格進行現代和古典的搭配與對話。團隊精心規劃的通透格局，不僅讓室內空氣得以充分流通，也能放大整體的空間感；加上隱藏式暗門與雙平行動線的設計，門片敞開時能與走道牆面自然融合，滿足業主聚會、親子活動所需，關上後，又能提供安靜的私人空間與時光。編輯 歐陽青昀

3. 前廳，由天然實木與魚肚白大理石交錯拼裝成指向圖形的花紋地磚。4. 橘橙色客廳中放置兩組淺卡其的一字型沙發，與背後窗景的花園綠意，形成了一幅如藝術般的畫作。

3. The main entrance offers a nice floor marrying a wood floor pattern with white marble. 4. The first living room uses a warm yellow, similar to a warm sunset, marrying orange, gold, and yellow colors, into the pillows and soft decoration.







5

5.1 樓平面圖。6.7. 側廳連接著客廳與內院，深藍色系營造出相異於客廳的氛圍與機能。8. 兩側的泳池、花園是孩子的娛樂場地。9-11. 餐廳的天花板透過陣列的木條網狀結構設計，豐富其形狀本身的表面肌理。

5. The first-floor plan. 6.7. The second living room uses a dark blue, such as a nice blue sky in the evening before nighttime. 8. Garden and swimming pool. 9-11. The ceiling of the dining room use wood and wood sticks to create an inner visible roof structure.



6



7



8

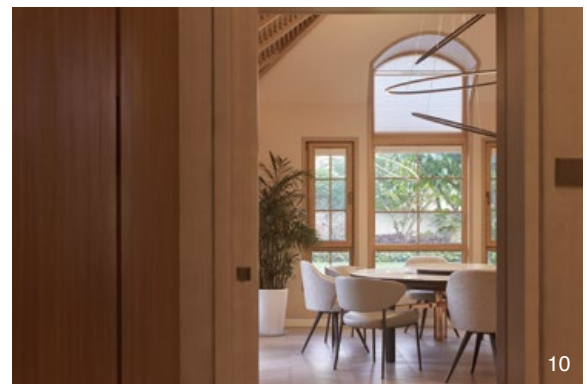


9

Mister Lu approached Interior design studio, RooMoo, with the desire to design a villa inhabited for a family of two children, with a western design style. This villa is located in Nanjing, China. It is surrounded by a nice garden and a swimming pool. RooMoo replied by using a French style with a few Chinese touch, combining noble and rough material. In order to offer the most comfortable and enjoyable layout.

French style with a few Chinese touch

The three functions: dining room, main living room, and second living room were implanted on the first floor facing the south garden. As it was important for us to allow everyone, in every public space, to be able to enjoy the outdoors and to offer beautiful green scenery with direct light. Quiet activities, such as bedrooms were located upstairs with a number of 5 bedrooms in total. While the loud activities were located in the basement. The main entrance offers a nice floor marrying a wood floor pattern with white marble. It remains to speak about colors and artistic touch. To bring a warm feeling into every space of the house, warm orange and beige leather were selected. The first living room uses a warm yellow, similar to a warm sunset, marrying orange, gold, and yellow colors, into the pillows and soft decoration. While the second living room uses a dark blue, such as a nice blue sky in the evening before nighttime. The idea was to create a calm retreat atmosphere for study time. Dark blue is found on the



10



11

painted ceiling and in the soft decoration. The dining room uses a salmon color into the walls. While the ceiling use wood and wood sticks to create an inner visible roof structure. It also can be seen as a nod in the Chinese roof structure. we wanted to create a warmer traditional feeling above the dining table.

Quiet activities were located upstairs. The main bedroom and bathroom of the parents get a customized carpet and curtain with a golden touch. The dressing and bathroom have also a warm orange glass to contrast with the white upholstery leather on the walls. The daughter's bedroom is using a gradient of pink to yellow. The son's bedroom is using a nice turquoise color into the wall/ceiling painting and mosaic. While the loud activities were located in the basement. The low light for nocturne activities such as cinema, bar or wine cellar is well met.

We created a double parallels circulation flow into the space, which is particular to the French layout. Once, all the doors in those corridors are open, it allows to enlarge the space with interesting perspectives of arches and offering nice scenery all along the corridor facing the garden. Once the doors are closed, it creates some privacy for Cinema or study functions. The western style was brought by using details and material. The most obvious element is certainly the traditional French wall molding, used in Haussmannian apartments in Paris. Text by RooMoo Design Studio

建材分析 Material Analysis

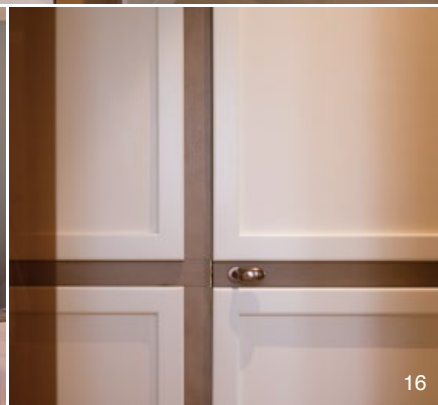
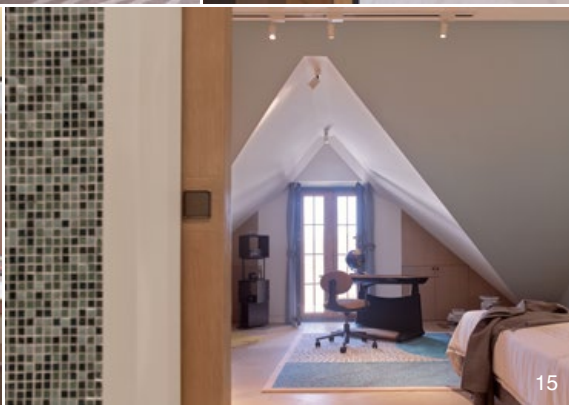
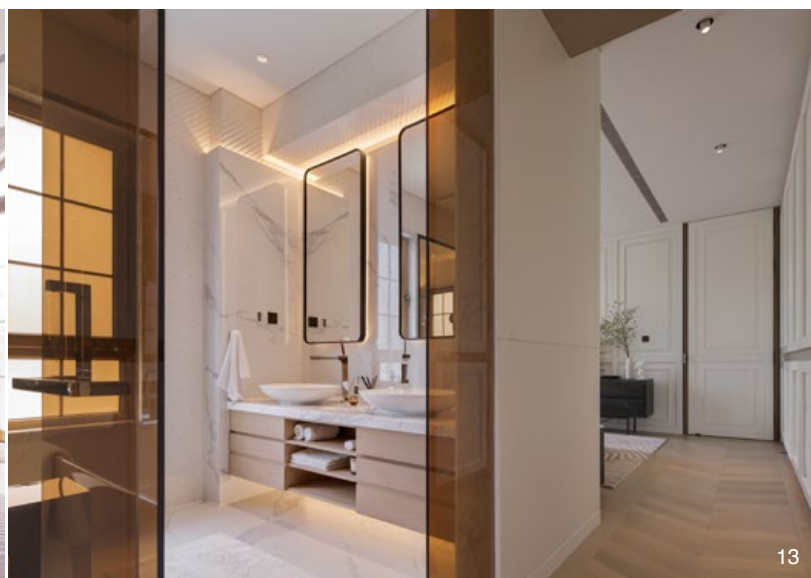
1. 前廳，由天然實木與魚肚白大理石交錯拼裝成指向圖形的花紋地磚。2. 餐廳，在梯形挑高的天花板內引入陣列木條網狀結構，不僅豐富表面肌理，木質的溫潤色彩也增添柔和氛圍。3. 地下層的娛樂共享空間，以黑灰色的染色橡木作為基本基調，並局部使用軟硬包來加強對於音響音效的聲音控制。

1. The main entrance offers a nice floor marrying a wood floor pattern with white marble. 2. The ceiling of the dining room use wood and wood sticks to create an inner visible roof structure. 3. The loud activities were located in the basement.

溝通重點 Communication Note

1. 別墅設計對建築本身的方位、朝向、院落，以及室內、外環境的水平垂直方向的考量都十分重視，所以設計團隊透過對空間尺度以及動線的重新梳理，不僅串連起室內外場域，同時也讓此處成為真正的親子趣味空間。2. 業主希望別墅的設計能優雅又不失奢華，所以才會以法式風格為方向，但又希望跳脫舊有法式風格的既定印象，為此，將此作定位為「新法式」風格，透過傳統材質與新材料、工藝的結合，從設計細節和質地來詮釋。

1. RooMoo studied the energy flow, the environment, and the orientation of the villa. In order to offer the most comfortable and enjoyable layout. 2. RooMoo replied by using a French style with a few Chinese touch, combining noble and rough material.





17



18



19

12. 主臥室搭配具深淺變化的駝色地毯、金色質感的窗簾，延續公共空間的暖調氣息。13. 主臥室的更衣室以及衛浴內，選用橙色玻璃，與牆上的白色內飾皮革形成鮮明對比。14. 女兒房在壁紙和馬賽克磁磚中，藉由排列的變化，形成了由粉到黃的漸變色彩，柔和空間氛圍。15. 兒子房則在牆壁、天花板和馬賽克磁磚中選用了色澤鮮明的綠松石色。16. 設計的精緻在門把手、合頁處等細節部分皆有體現。17-19. 地下層作為娛樂共享空間，在昏暗的環境中堆疊上黑灰色的染色橡木作為基調，更滿足影視觀賞、收藏展示等活動需求。20.2 樓平面圖。21.3 樓平面圖。22.B1 平面圖。

12. The main bedroom and bathroom of the parents get a customized carpet and curtain with a golden touch. 13. The dressing and bathroom have a warm orange glass to contrast with the white upholstery leather on the walls. 14. The daughter's bedroom is using a gradient of pink to yellow. 15. The son's bedroom is using a nice turquoise color into the wall/ceiling painting and mosaic. 16. The exquisite design is reflected in details such as door handles and hinges. 17-19. The loud activities were located in the basement. 20. The second-floor plan. 21. The third-floor plan. 22. B1 floor plan.



20



21



22