

Voisin Organique Restaurant & Lounge

鄰舍有機餐廳

設計者」萬社設計 / 林倩怡 楊東子
參與者」李詩琪 唐靜靜
攝影者」邵峰
空間性質」有機餐廳
坐落位置」中國
主要材料」銀箔、肌理漆、金屬、木作、皮革
面積」100 坪
項目年份」2019 年

Designer」 Various Associates / Qianyi Lin, Dongzi Yang
Participants」 Suki, Jingjing Tang
Photographer」 Shao Feng
Category」 Restaurant & Lounge
Location」 China
Materials」 aluminum foil, textural paint, metal, woodwork, leather
Size」 330m²
Project year」 2019



藉峽谷間野餐的意象切合品牌禮敬自然之特色，在抽象簡潔的手法裡，令饕客聯想到峽谷情境，沉浸於預設的故事脈絡。

「Voisin Organique Restaurant & Lounge 鄰舍有機餐廳」主打當代中國料理，是標榜健康、新鮮、創新、養生，所有食材自農場直輸的（farm to table）高級餐廳，所有菜譜均以古典美學為靈感，結合自家歐盟有機認證農場種植的食材，將古法中國菜與國際化的 fine dining 儀式感相融合，以獨特與精緻定位，媒合中西餐飲精華，重寫中式菜餚之當代印象。

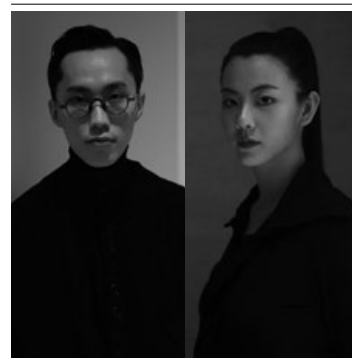
峽穀漫遊

基地為L型空間，使用需求含納酒吧區、高級正餐區及寬闊廚區，如何營造兩處餐區各自特色，同時彼此呼應和諧，是主要的設計挑戰。此外，因餐廳屬性特別，服務客群多為喜愛細品美食的老饕族群，設計團隊採用銅色立面包覆外觀，一來阻絕環境紛擾，二則助於空間內部創造劇場氛圍，油生獨立於城市的錯覺，令人完全沉浸於品牌、菜色所闡述的故事。外牆嵌入成排的凸透鏡，為室內引入光束，強化整體的戲劇性，也可作視窗為裡外窺探搭建橋樑。

設計師考察基地特色，其天花板的高低差、巨型管道、轉角、採光落差所導致的幽暗空間，觸動他以「峽穀漫遊」為主題構劃空間旅程，藉著峽谷間野餐的意象契合品牌禮敬自然之特色。有趣的是，雖說自然，但手法卻是抽象簡潔，重視建築邏輯的務實理性，不做具象裝飾，不刻意強調自然材料，而是讓一切回歸實質機能，利用基地特色作為提引，令饕客在戲劇化的場境裡聯想至峽谷情境，沉浸於預設的故事脈絡。



Dongzi Yang, Qianyi Lin



萬社設計 / 楊東子 林倩怡

萬社設計是一間建築和室內設計工作室，致力於地方及全球性設計研究專案。工作室成立於2017年，擁有國際頂尖背景的設計師團隊，其專業範圍涵蓋建築空間、室內設計、材料研究、平面和交互設計等，致力於高端及實驗性項目的設計與研究，從空間功能出發，通過對材料的研究，挑戰常規，關注細節與品質，為每個專案打造出獨特的視覺效果。同時，作為一處藝術家 and 設計師的合作平臺，萬社希望能夠結合創意與技術，探索過去、現在與未來，突破創作界限。

Various Associates / Dongzi Yang, Qianyi Lin

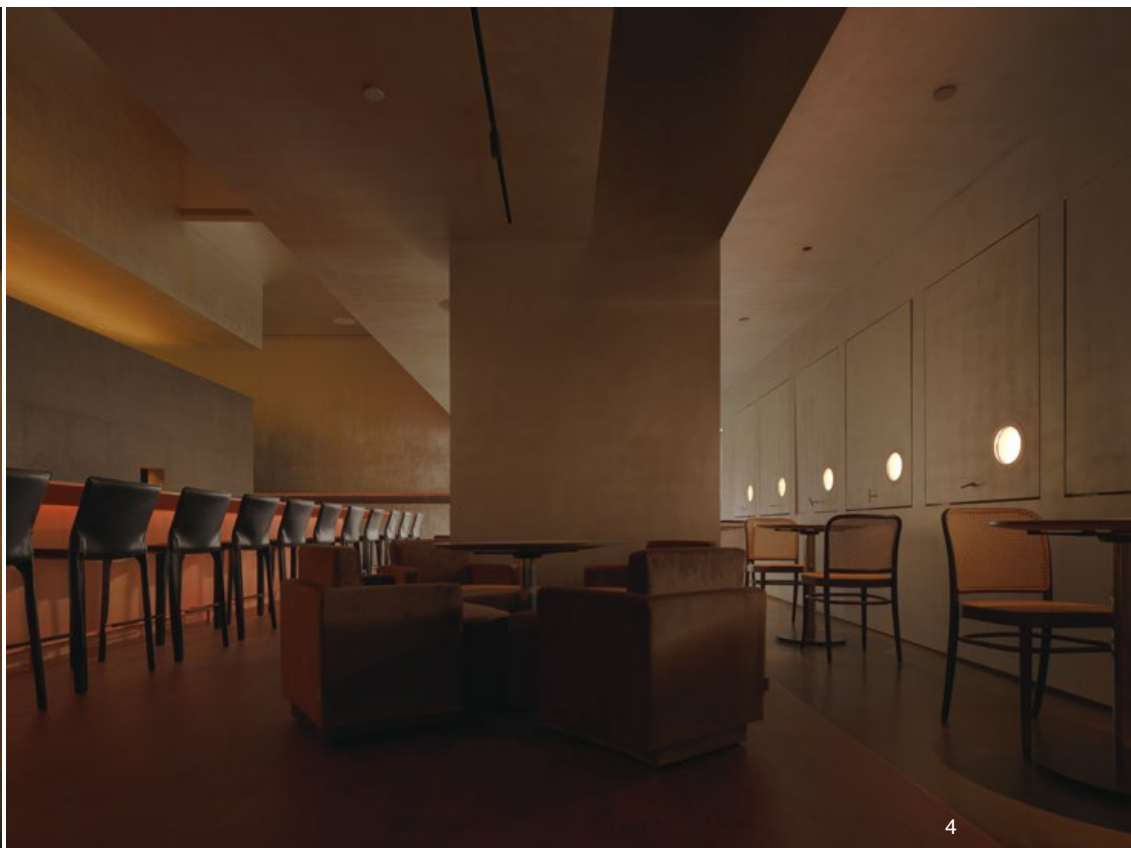
Various Associates is an architecture and interior design practice working regionally and internationally on research-based design projects. VA was founded in 2017 as a team of designers from an international background with professional expertise in architecture, interior design, material design, graphic and interaction design. The studio is developing ambitious high-end projects including boutique hotels, restaurants, retail spaces, workspaces and galleries. VA focuses on enhancing spaces and developing material details using bespoke approaches to give unique visual expressions to each project. VA also gives artists and designers a platform to collaborate and reimagine new ways to be creative and break down barriers between the arts.

1. 外立面上的玻璃圓洞，為室內引入些許陽光。2. 玻璃圓洞也是透視窗口，連接著裡外兩個世界。

1. Some void round shape holes invites natural light to enter. 2. Round shape holes provide a glimpse from inside out and outside in.

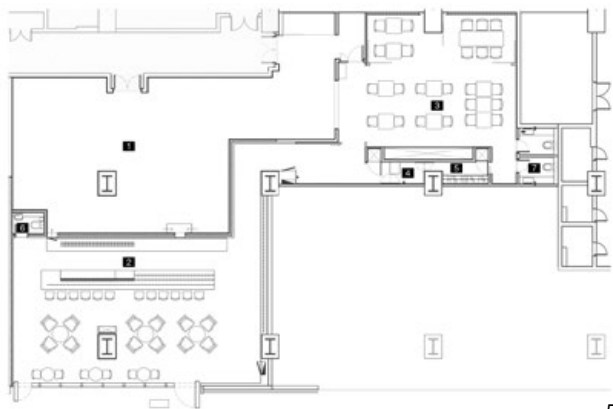


3



4

3. 入口，幽暗而神秘的氛圍領人探索。4. 酒吧挑高空間與天井予人震撼感受。5. 平面圖。6. 日光穿過玻璃圓洞照入室內，看與被看，亮與暗產生了趣味。
3. Entrance with a mysterious mood. 4. A high ceiling bar space is impressive with by its amazing scale. 5. Plan. 6. Natural light penetrates the glass holes and provides a contrast between brightness and darkness.



5

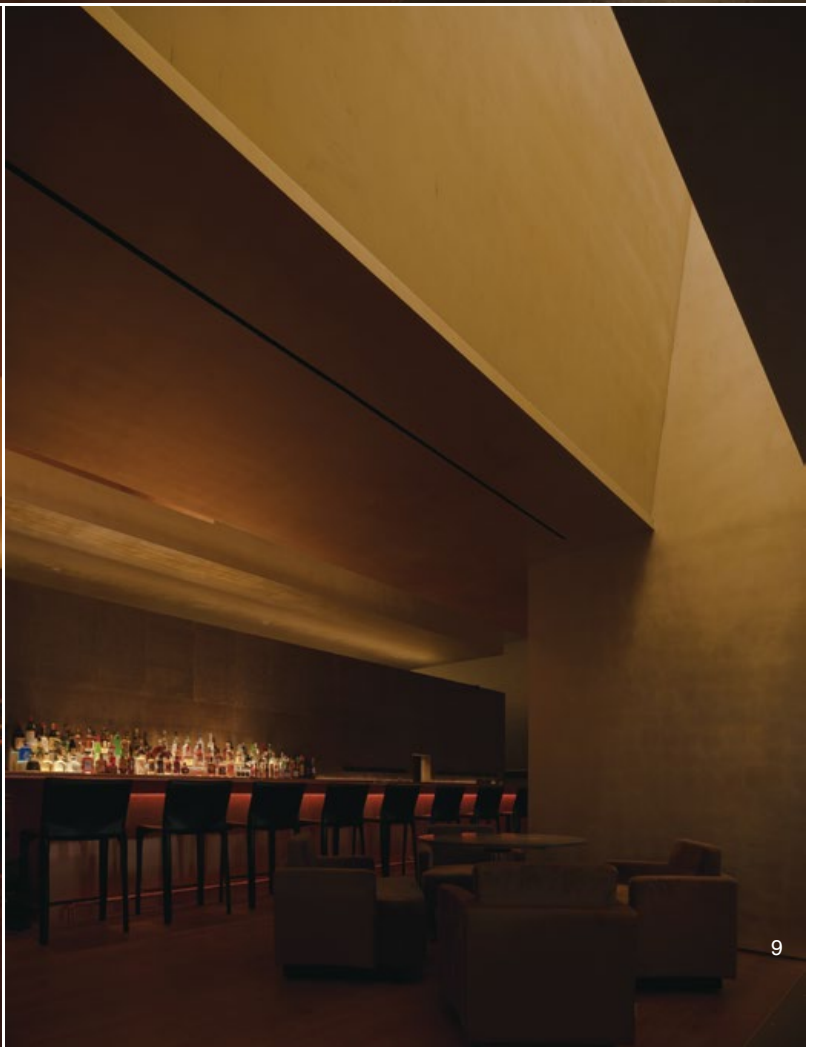
基地前段為酒吧區域，既有的天花板高度已有極大落差，低矮與挑高區互襯著彼此懸殊，低矮處的天花板中間有一道深邃溝壑，光照自頂端灑落空間，顯得神聖而靜謐，引人好奇仰望。酒吧腹地裡，順著柱體區隔出各式座區，讓最醒目的吧檯鄰近挑高處，利用場域光線的明暗反差，深化整體戲劇性，突顯出調酒師的優美身手。

連接兩處餐區的過道重視幽靜，僅以少數燈飾示意動線走向，在儀式感與神秘氣息裡喚起期待，領人慢慢步入另一座隱蔽的空間。從廊道旋入正餐區，迎面最醒目的是暗紅色天花板，巨大的挑高口讓人彷彿置身於泥紅色的礦山洞口下。當瞳孔適應環境幽暗時，將細查到周遭粗獷質樸的選材，無論立

面、桌椅，一切無不以暗黑色調鋪陳，角落灑下的冷光與局部投映於桌面的光點，更顯得一切神秘且別致。

此作另一特色之處，是設計師為空間抹上了一層「霧感」，全場精控光照角度，再利用銀色材料的受光回應，為室內打入了柔和霧光，用以提升整體氛圍質感，它深刻了空間情境的戲劇性，一如山間霧氣氤氳或微紅餘暉般朦朧詩意，讓人在品酒饗食的過程裡，情意上回歸了自然之境。撰文 | 室內雜誌編輯部

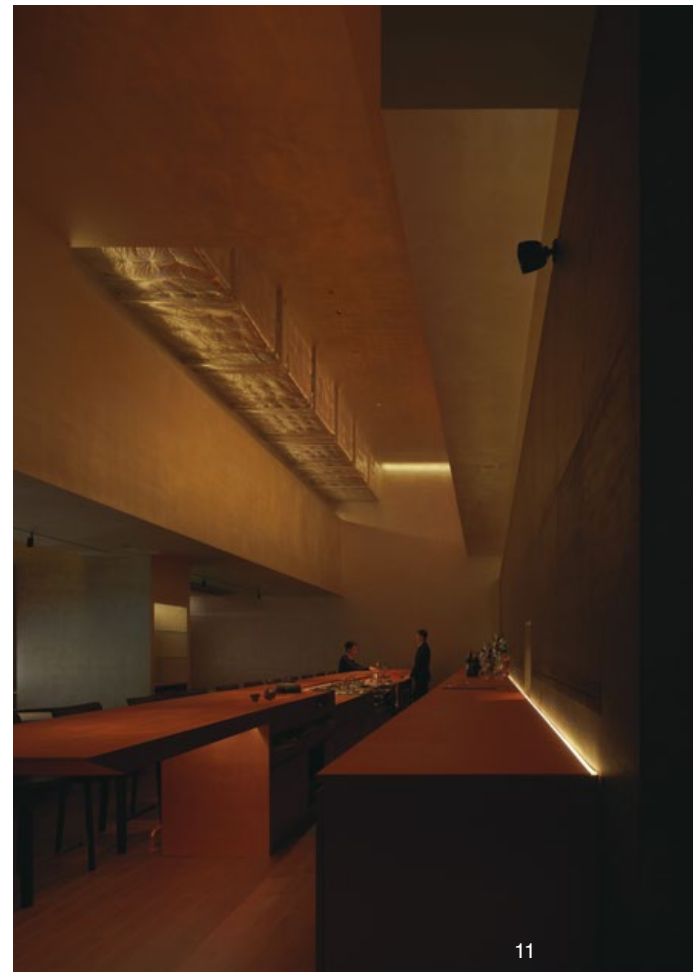




7. 酒吧區域，銀箔質感加上微紅色調，隨著頂上灑下的光線，顯得靜謐且特別。8. 低矮的天花對比深邃的挑高溝壑，光影自溝壑灑入空間。9. 酒吧區域，建築結構特色讓人彷彿置身於山谷之間。10. 過道上充滿了儀式和神祕感。11. 銀色啞光質感讓室內反射出光暈，感受有如身在薄霧裡般唯美。12. 建築感的細節令空間簡潔且理性。

7. Bar area emits a shimmering red light that reflects from the aluminum surface and replicates natural light. 8. Compressed ceiling dialogues with a very high central courtyard. 9. Bar area and its "canyon" space impression. 10. The passage reveals a mysterious impression. 11. Mat silver light permeates the room like on a foggy day. 12. Details are made with rational precision.

Situated in Upper Hills, Futian District, Shenzhen, Voisin Organique is a farm-to-table restaurant features contemporary Chinese cuisine. The restaurant draws on classic aesthetics, uses ingredients grown in its ECOCERT-certified farm, and integrates age-old Chinese cuisine with fine dining experiences.



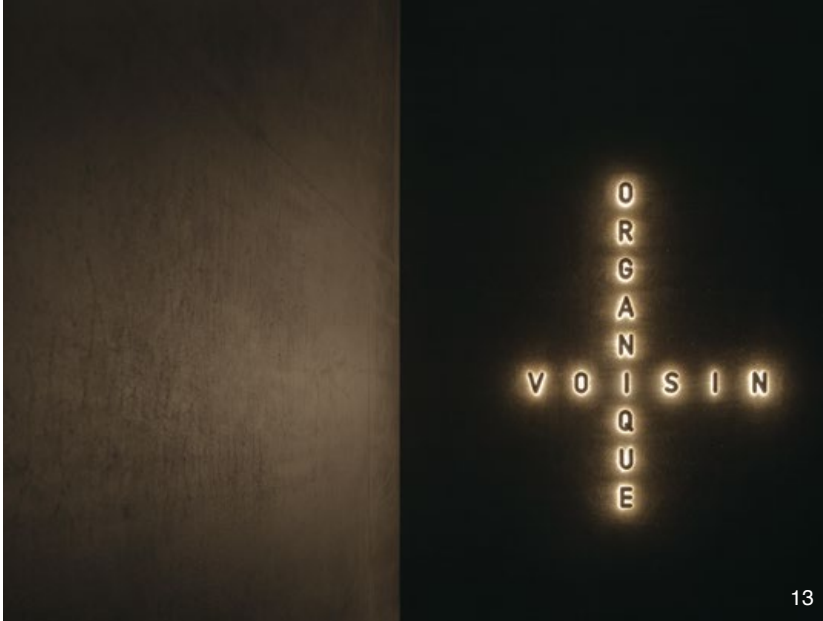
"Wandering in Valleys"

The owner entrusted Various Associates to conceive the interiors, requesting a lounge, a fine dining area and a 110-square-meter kitchen within the space.

The restaurant has a towering bronze facade, which helps to block out the glaring sunlight, while the row of bespoke convex lenses on it triggers people's curiosity about the interior. The round holes on the facade introduce daylight into the space, and at the same time connect the inside and outside. The holes allow the curious people outside to look in and the diners to look outward. Such interaction adds playfulness to the sedate facade. Bright light filters in via the holes, making the dark interior appear unreal, just like an otherworldly place.

As for how to create distinctive ambience and experience in the two dining areas and link them smoothly, a brilliant idea popped up when the design team visited the site the first time. The site is a high and dark L-shaped space. Inside the entrance is a large double-height area, above which lies a huge flue which can't be dismantled. The fire-resistant material wrapping the flue glitters produces striking visual effects in the expansive space. Opening a flashlight and shining it onto the flue, people can see the fireproof covering reflecting light and brightening a part of the space, which creates an illusion that a metallic mineral was prospected. Taking into account site conditions such as height difference, the giant gleaming pipe, corners and the dark space, and combining these with the restaurant's





13



14



15



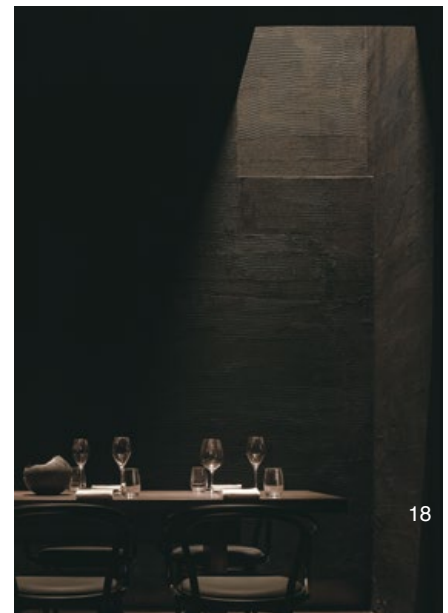
16

13. 沿著燈光的提示指引方向，進入正餐區。14. 進入正餐區，壯觀的暗紅色天井隨即映入眼簾。15. 正餐區，在幽暗的空間裡，彷彿置身在深紅色的礦山洞口底下。16. 暗紅色的天花板、粗獷的牆面質感、深色桌椅、透明杯具，不同元素交織在一起，形成一個帶有儀式感的空間。17. 黑色與紅色，在低斂照明與黑色材質的照映下，折射出獨特的感官氛圍。18. 黑暗粗糙的肌理漆強化了原始粗獷的氛圍，角落上的冷色光為空間添加了一絲自然的氣息。

brand concept and its pursuit of a natural environment, Various Associates envisioned a concept story of having picnic in valleys, and regarded it as the design thread.

The interior space was approached based on the concept of "wandering in valleys", indicating a free exploration in wild nature. Entering the lounge area, people may feel like they are suddenly brought into a valley, with steep hills in between. The ceilings show great height discrepancy. Some are as high as precipices, attracting people to look upwards. Among two suspended ceilings, there is a deep gully that extends up to the top, where light from nowhere shines downwards. From ceilings to walls, large areas of the interior surfaces are finished with matte silver foil. It diffuses light throughout the space and reflects dim human figures, making people feel like they are in the mist. The passageway is filled with a sense of ritual and mystery. Walking deep along the passage with light, people will encounter a hidden space. The space concealed behind the corner is gloomy, which serves as fine dining area. Sweeping a flashlight in it, people would feel as if they are exploring in a primitive hill.

Slowly stepping into this space, a dark red concave ceiling leaps to the eye, which seems to bring people beneath a red mine pit. Within the fine dining area, different elements including the deep red ceiling, rough wall surfaces, pure black furniture and transparent glasses are interwoven together, which renders the space classy and endows it with a sense of occasion. In the dark hue-dominated space, the striking red



18



17

13. Main dining hall is at the end of the pathway. 14. Main dining hall is positioned in a space like the bottom of a canyon. 15. Main dining hall is in a dim ambience as if surrounded by high hills. 16. Crimson canopy covers the space surrounded by rustic surface walls. Black chairs and transparent utensils on the table mix into a surreal mode. 17. Black and crimson form a mysterious mood. 18. Dark and rustic texture is disturbed by a shot of bright light.

collides with candle flames and black materials, generating unique sensory experiences. The deep darkness and the white light produce a rustic yet luxurious ambience, which contributes to creating an extreme experience in the fine dining area. The black and rough texture of paint strengthens the primitive and rustic atmosphere, while the white light on the corner adds a sort of natural ambience to the space.

Though fully adopting abstract design languages and utilizing no avant-garde material with natural quality, Various Associates successfully created a space that evokes imagination, in which diners can immerse themselves in enjoying picnic in a valley. Besides, the design incorporates rational architectural logic whilst taking the concept story as the thread, which gives the space a romantic aesthetic. Text by Various Associates

建材分析 Material Analysis

1. 銀箔：大量貼覆於硬體結構，利用幽微光照反射暈光，創造有如身在霧裡的詩意。2. 肌理漆：強化壁面紋理質感，令整體顯得自然質樸。3. 金屬：外觀銅色牆，反映出日光與歲月感，呼應餐廳自然主題。

1. Aluminum foil: it is clad over the entire surface of the structural body; the material provides a shimmering light in a poetic melody. 2. Textured paint: applied to certain spots to provide a natural setting on the surface. 3. Metal: it is used to cover the interior space and reflect natural light within the restaurant.

溝通重點 Communication Note

1. Voisin Organique Restaurant & Lounge 鄰舍有機餐廳是一家主打當代中國料理的有機餐廳，強調食材自農場直輸，並且將古法中國菜與國際化的 *fine dining* 的儀式感相融合，空間設計上亦強調融混與當代特色。2. 平面配置上，需規劃一個酒吧區、一個高級正餐區，以及至少 33 坪的大型專業廚房。3. 整體設計，利用基地特色以「峽穀漫遊」的概念建立空間獨特體驗。

1. Voisin Organique Restaurant & Lounge is a restaurant for contemporary Chinese cuisine. Its menu promotes "farm to table" food, in a luxe setting like fine dining in the Chinese style. 2. The plan required at least a 330 square meters kitchen, a bar area and a formal stylish hall for food serving. 3. Spatial layout features a visual experience like dining in a natural setting at the bottom of a canyon.