

Wabi-Sabi Inspiration

侘寂鎏金

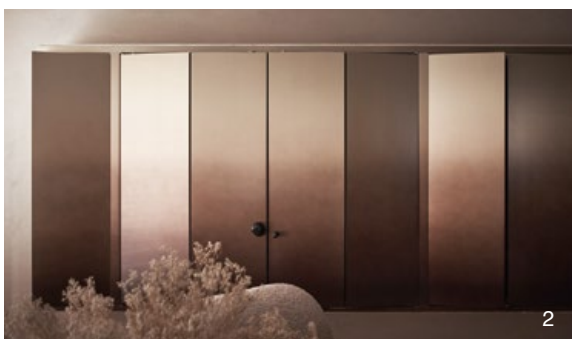
設計者」覺知造所 / 胡廷璋
攝影者」嘿！起司！
空間性質」住宅
坐落位置」台灣
主要材料」礦物漆、不鏽鋼、明鏡、磁磚、實木百葉、木皮
面積」31 坪

Designers」 Daniel Hu Interior / Daniel Hu
Photographer」 Hey! Cheese
Category」 Residence
Location」 Taiwan
Materials」 Brush surface veneer, metal member, titanium plated board, building stone
Size」 125.6m²



空間在鑲金反射下，映照明鏡見心般的自身投影。

胡廷璋設計師擅用清麗手法闡述心靈浩瀚與歲月豐美之景。在《侘寂鑲金》一作中，他藉著結構量體、凝鍊線條、拙樸質地與捕捉光影等手法蘊生空間詩意，釀構出一座飽含東方雅麗與人文哲思的住宅。



居映其心

此作為都會女子的獨居宅，熱愛生活的女主人鍾情藝術、美學與茶道，時而邀請好友到自宅舉辦茶宴。因是滿足一人生活所需，整體空間規劃依循「一位修行者的居所」為靈感，藉以闡述居住者入世而獨立的生活。

綜觀 31 坪的家居，平面布局貫徹無障礙空間思考，體現出修行者內在的清淨無礙，將收納與生活機能逐一隱藏於壁、柱之中，必要的獨立個室也紛紛用木質牆扇彈性區隔，令立面可以開闔變化，彈性切換場域連通的範圍，確立了全室流暢無礙的格局。在生活機能方面，規劃多功能廳區、廚區、和室、浴廁、臥室，以照顧日常使用，此外也進一步思考宴客情境，特意將客廳、餐廳、茶吧台整合為多功能廳，在開放串連的腹地裡，居住者無論宴客、茶席、視聽、禪修，均能視使用需求而定義場地，亦可隨活動規劃或心境來開闔牆扇，決定區域串連或封閉的範圍。

設計師特地在腹地中心規劃和室，亦有其用意。這方領域是全室的動線中心，肩負公私領域的疏、閉調節，和室牆扇全部收攏後動線即可穿插至周邊的公私屬域，若需獨立的靜謐空間或是顧及隱私需求，只需展開牆扇即能圍塑成封閉個室；透過牆扇的開闔變化，行進間因視覺或透或遮、視角或定或移所衍生的靜物風景，和室成了心境轉換的過渡空間，一切不呆板、不固定、不執著，正如修行者順心隨緣、心無罣礙的開闊與從容。

Daniel Hu



覺知造所主持人 / 胡廷璋

胡廷璋認為空間應能使人更容易進入當下感受與存在，而非成為阻礙。作品善於將美感融入生活，減化與日常需求無關的線條與設計，盡可能地讓空間回歸到人與人間最純粹型態，同時蘊含藝術性與詩意。重要得獎記錄包括德國 iF 金質獎、台灣 TID Award 金獎、亞洲最具影響力設計獎等。設計工作僅為其日常中一個面向。除此之外，胡廷璋亦是日本裏千家茶道講師與葡萄酒師，並透過書寫分享設計工作以外的角度與觀點。

Daniel Hu Interior / Daniel Hu

His works excel in integrating aesthetics into life, simplifying lines and designs unrelated to daily needs. He strives to return spaces to their purest form of human interaction, all while encompassing artistic and poetic elements. His awards include the iF Gold Award, TID Award Gold Prize, and the Asian Design Award for Most Influential Design, etc.

He views design work as just one aspect of his daily life, as he is also a teacher of the Japanese Urasenke tea ceremony and a sake sommelier. Therefore, he is adept at sharing perspectives and viewpoints beyond design work through writing.

1. 空間在鑲金反射下，映照明鏡見心般地自身投影。2. 櫃體門片採用金屬漸層鍍鈦板，將鑲金光澤對比為銅鏡，為生活帶來儀式感。

1. The space, reflecting under the gilded reflection, mirrors a heart-like self-projection in the mirror. 2. The cabinet doors utilize gradient titanium-plated metal, bringing a sense of ceremony to everyday life.



3



4



5

捕捉時光

胡廷璋進一步為這座當代家居融會簡潔筆法與東方寫意，在空間植入捕捉時光的詩意，打開居住者的想像可能。

全室素壁選用膚色礦物漆為肌底，用以象徵人體，礦物塗層能隨著使用與歲月積澱溫度，靜靜記錄下空間記憶與生活故事。一如日本美學裡的侘寂（Wabi-Sabi）精神，不執著於有形事物的完美，尊重自然無常以及與之相遇的感受。相對於空間線條的簡明恆定，此作選擇在材料質地裡藏入「時間」因素，讓複雜多變且難以預測的時光變化，豐滿簡樸背景之質地。

客廳櫃牆與中島吧台採用金屬漸層鍍鈦板，藉表材的漸變光澤意喻佛像或珍貴銅器的裝飾工藝—鎏金，金屬表面因加溫而形成疊覆薰染的漸變金屬，透生出厚實溫潤的光澤感。空間裡的鎏金元素成了耀眼焦點，在光照下鎏金面微微顯現虹光漸層，突顯出環境裡的流動光影，巧妙地將「時間」元素體現於空間裡，隱喻著光陰似箭與稍縱即逝之意。

全作致力掌握理性與感性的平衡，使生活五感與心境禪思相融，所有具象、抽象元素就如同居住者特質與生活空間的彼此輝映，在牆扇開闔與身心行止間帶來儀式感，一切看似明淨無礙卻著實感受豐盈。採訪「室內雜誌編輯部



3. 將一切化繁為簡，體現修行者的清淨無礙。4.6. 開放廚區與茶吧台融入公共廳區中，增拓場域多元應用可能。5. 平面圖。7. 開放串連的腹地裡，讓居住者視當下需求定義場地功能。

3. Simplified space offers a client's life in pure need. 4.6. The open kitchen and tea bar seamlessly integrate into the public hall area, expanding the possibilities of diverse uses of the space. 5. Plan. 7. Client can use the space in a flexible way.





8. 居住者可依隨心境決定牆扇的開闔變化，使場域串連或封閉。9. 和室中介於公私領域之間，動線能穿插至周邊鄰區，也可圍塑成一方獨立空間。

Daniel skillfully employs a technique to articulate the vastness of the soul and the richness of time. In this work, he utilizes structural organization, refined lines, simple textures, and changes in light and shadow to develop a spatial poetry, constructing the residence to be imbued with Eastern philosophical thoughts.

Reflecting Heart

The client, with a passion for artistic aesthetics and the way of tea, occasionally invites friends to her home for tea gatherings. Designed to meet the needs of a solo lifestyle, the overall spatial planning is inspired by "a religious practitioner", illustrating the resident's engaged yet independent way of life.

Across the 31-ping sized residence, the floor plan embodies a consideration for barrier-free space, reflecting the inhabitant's inner purity and openness. Storage and living functions are discreetly hidden within walls and columns. Necessary rooms are flexibly separated by wooden partitions that can be opened or closed. In terms of functionality, there's a multi-functional hall area, kitchen, traditional Japanese room, bathroom, and bedroom. The living room, dining room, and tea bar are intentionally integrated into the multi-functional hall for social functions. It can be used for entertaining guests, hosting tea ceremonies, audio-visual activities, meditation, and more, providing a versatile space for various purposes.



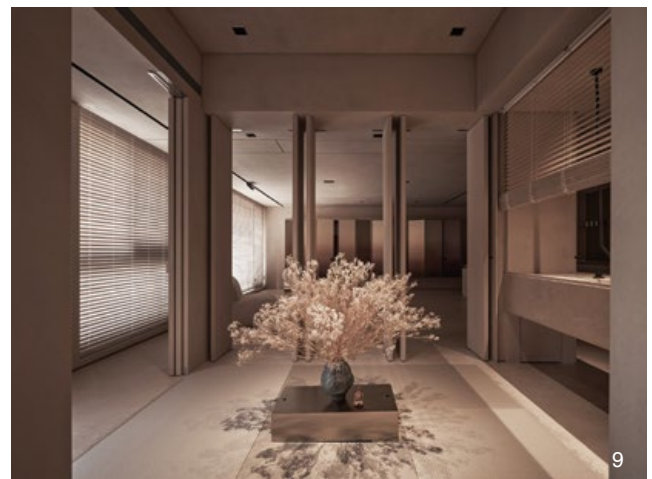
8

8. The resident can decide the opening and closing variations of the sliding doors based on their mood. 9. The Japanese-style room serves as an intermediary between the public and private domains, allowing the circulation to extend into surrounding areas.

The designer planned a Japanese-style room located at the center of the circulation, serving the purpose of adjusting functions in both public and private domains. When all the sliding doors of the Japanese-style room are fully opened, the public space can expand, and when the doors are closed, the interior can be enclosed to form a private room. The opening and closing variations generate diverse changes in the internal spatial landscape. The Japanese-style room becomes a transitional space for mood transformation, symbolizing the flexibility and calmness of a practitioner who adapts to circumstances and embraces an open and unhindered heart.

Time catching mechanism

This space is filled with the poetic essence of capturing moments, opening up various possibilities for the imagination of the inhabitants.



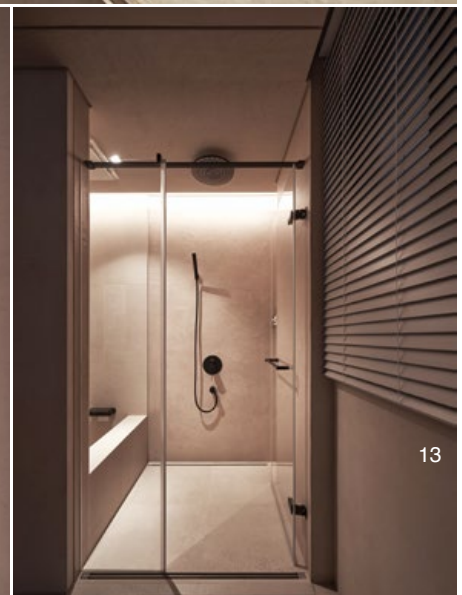
9



The entire room uses a mineral paint with a skin-tone base for the plain walls. Such a mineral coating, accumulating temperature changes over time and use, quietly records the space's memories and life stories. Reflecting the spirit of the Japanese concept of Wabi-Sabi, it embraces the imperfection of tangible things, emphasizing natural impermanence and the emotions encountered in the process. The use of materials incorporates the element of "time," enriching the texture of the simple dwelling with the complex and unpredictable changes of time.

The living room cabinet wall and island bar counter utilize gradient titanium-plated metal, symbolizing the decorative craftsmanship of gilding, akin to Buddha statues or precious

bronze artifacts. The gilded elements in the space become the focal point, showcasing a gradient iridescence on the metal surface under light, demonstrating the flowing light and shadows in the environment. It cleverly embodies the element of "time" in the spatial design.





14



15



16

10.11. 和室牆扇能開闔變化，與周邊領域串連。12. 利用隱藏式門片，將浴廁機能消化於廊道動線中。13. 將沐浴區編入浴廁的廊道動線上。14. 臥室，居住者可依當日的使用規劃或心境，決定臥室與鄰區的串連範圍。15. 臥室背景選用膚色礦物漆為肌底。16. 考量一人居住，儘可能讓空間通透、動線自由，給予居住者最大的運用自主。

10.11. Japanese style room can be open or closed. 12. Hidden door serves the opening to bathroom. 13. Bathroom is hidden behind main circulation path. 14. Bedroom view. 15. Wall texture uses mineral paint in the bedroom. 16. The living space is ample enough cozy for one residence to live in.

建材分析 Material Analysis

1. 礦物漆：以膚色礦物漆比喻為身體肌膚。
2. 不鏽鋼：採用漸層鍍鈦處理，比喻為儀式器皿。
3. 實木百葉與木皮門片：作為牆扇，輔助切換空間場域。

1. Mineral Paint: skin color mineral paint signifies human skin. 2. Stainless steel: gradient titanium-plated metal signifies religious objects. 3. Solid wood blinds and wood veneer door panels: Serving as sliding doors, they enable the use of space for different purposes.

溝通重點 Communication Note

1. 以一個修行者的居所作為設計主軸，呈現其入世而獨立的生活。2. 對佛堂的討論從前期的禮佛房間，轉化為去表象型式體現。成為在生活中對日常點滴的珍視與崇敬，移去佛像與佛具等符號，僅在空間中留下蘊含其意象的材質，利用家具面材的反射效果，映照明鏡見心般的自身投影。3. 全室無障礙動線，空間規劃需考量宴客與茶席活動，配置待客茶台，視聽與禪修等機能。4. 體現修行者的清淨無礙，將日常待客機能與收納規劃俐落歸整。

1. Taking a practitioner's dwelling as focal design point, it presents a lifestyle that is engaged in the world yet independent. 2. The discussion on the Buddhist hall transitioned initially from a worship room to a transformation that embodies a departure from representational forms. 3. The entire space features barrier-free circulation, with spatial planning considering hosting events such as gatherings and tea ceremonies. 4. Reflecting the practitioner's purity and openness, the daily hosting functions and storage are neatly organized.