

# In the Mood for Love

## 花樣年華

設計者」近境制作 / 唐忠漢  
攝影者」崑米總空間攝影  
空間性質」住宅  
坐落位置」台灣  
主要材料」塗料、釉面磚、夾紗玻璃、木格柵、薄板磚、石材  
面積」55 坪

Designers」Design Apartment / Tang Chung Han  
Photographer」Weimax Studio  
Category」Residence  
Location」Taiwan  
Materials」Paint, art glass panel, ceramic tile, wooden grille, thin floor tile, stone  
Size」181.9m<sup>2</sup>



以電影《花樣年華》為靈感，

在灰調基底中，用紅綠色彩的斑斕、相異材質的碰撞與光影流動的軌跡，帶出經洗鍊的優雅氣息。

一位擁有社會歷練、工作幹練又熱愛生活美學和潮流時尚的女性宅邸會是什麼樣貌？這讓唐忠漢設計師想起了王家衛電影中的張曼玉，加上此案基地位於台北市中心，生活機能好又鄰近時尚與潮流圈的中心；近境制作便以充斥著顏色和光影的電影《花樣年華》為靈感，取電影中主角那不疾不徐的步伐、溫柔的語調與優雅的旗袍等元素，經重新布局與設計轉化後，帶出一座經洗鍊的優雅住宅。

#### 內外交融的場景

唐忠漢設計師說道，此作作為一個都會時尚住宅，他希望提供屋主不同的空間體驗，所以有別於以往傳統的格局配置，他選擇將浴缸與更衣區作為場域核心與公私領域的分界線，再利用餐廳與客廳拉出空間軸線，藉此帶出兩條回字形動線來串連整個場域；如此開敞的空間設計不僅能更好的引入自然光線，達到室內外交融的作用，也能放大室內空間並靈活各個場域的使用。

餐廳作為入門時的第一個視覺焦點，也是營造整體空間氛圍的主角。天花板使用大面積柚木格柵定義空間調性，溫潤的木材平衡了冷冽的色彩氣息，而秩序排列的木格柵也巧妙地隱藏了空調設備，讓視覺更顯乾淨利落；橫跨客餐廳的主樑則藉由鏡面包覆，讓木格柵天花板繼續延伸，再用輕薄的弧線銜接至客廳，弱化主樑予人的體量感，同時降低兩個場域之間天花板的高低差問題。

而餐廳除了日常享用餐食，更是居家空間中提供社交與互動交流的重要場域。設計師將島台與餐桌利用高底錯落的形式融合，整合餐廚機能的同时，又能劃分出多個使用場景。餐廚四周搭配開放式的陳列櫃體，選用帶有灰色紋理的白色薄板磚，再以飽和的酒紅色點綴，搭配透光石材暈染出光線變化。在灰階的基底上，用木材的上下呼應、沉穩微奢的色彩，使餐廚成為迎賓與生活的重要區域。



## Tang Chung Han



近境制作 / 唐忠漢

近境制作 設計總監

Andrew Martin 國際室內設計大獎得主

義大利 A' Design 鉑金獎得主

生於亞洲，近境的設計源自於對生活的熱情，強調自然、清晰的原始設計，象徵年輕與活力，代表未來空間的發展方向，近境認為，最好的設計便是創造未來。

Design Apartment / Tang Chung Han

Design Apartment Chief of Design

Andrew Martin International Interior Design Award

Italy A' Design Gold Award

Born in Asia, Design Apartment concepts originate from a compassion for life, emphasizing natural, genuine design, implying youth and vitality, representing the direction of future design direction, and a belief that the best design creates the future.

1. 落地窗邊規劃開放式書房。2. 餐廳，作為入門時的第一個視覺焦點，也是營造整體空間氛圍的主角。

1. Plan of the open study room with floor-to-ceiling windows. 2. The dining room, as first encountered is the visual focus of the space. It is also the protagonist of creating the overall spatial atmosphere.



3. 選用前衛的紅色與綠色作為設計主軸。4. 平面圖。

### 光影波動出生活儀式

唐忠漢設計師進一步說道，現代人注重休憩與放鬆，沐浴泡澡是居家享受的時光之一，然而大部分的衛浴空間因考量濕氣問題與使用動線，都是位於平面角落並且相對封閉的；為此，他將浴缸獨立於衛浴空間之外，並與更衣室結合。半透明的琥珀色浴缸置放在墨綠色的石質地板上，以圓形光帶環繞四周；光在水的流動之下，倒映在天花板上，又與四周鏡面櫃體鏡射互動，藉由開放式的設計，讓泡澡成為一種享受生活的優雅儀式。

全作色調雖然是以灰色作為基底，但卻大膽的選用了前衛的紅色與綠色作為主軸；此一靈感是轉化電影《花樣年華》中以飽和的紅綠對比色為主，但又覆蓋上一層灰濛濛的色彩濾鏡而來。除了藉由色彩碰撞出不同的空間氛圍，材質的選用也

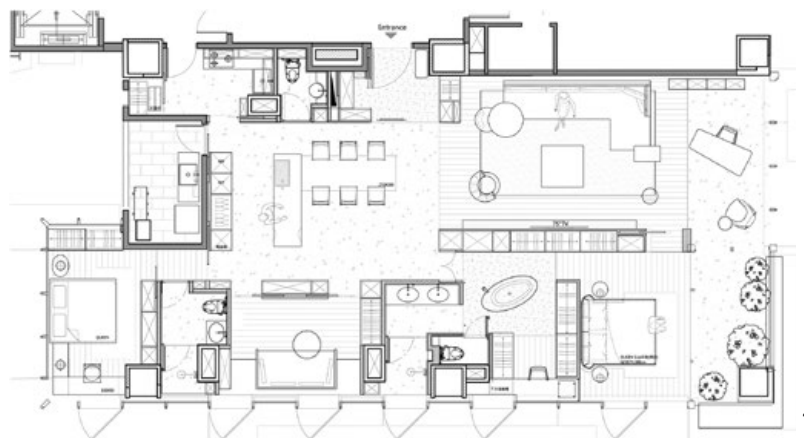


3

3. Avant-garde red and green were selected as the design scheme. 4. Floor Plan.

是特點之一，像是灰泥塗料、綠色的釉面磚、夾紗玻璃、木格柵等，透過強烈且紋理分明的質材豐富空間表情。

唐忠漢設計師認為，歲月洗鍊是一種生活儀式，雖然此作位於繁華都市，但他希望藉酒紅與墨綠、集結材質與色彩，勾勒出曲弧與光影，並界定出居家空間的內在本質。採訪「歐陽青昀



4



What will a dwelling look like for a successful career woman who with social experience loves a life of aesthetics and fashion? This profile reminded the designer of Maggie Cheung in Wong Kar-wai's film. This project located in the center of Taipei close to the heart of the fashion and trend circle was inspired by the film "In the Mood for Love", which is full of color and light, slow pace gentle tones and elegant characters. Therefore, the designers digested this and transformed it into a design to create a refined and elegant residence.

### Integrated views

Designer Tang said that as a metropolitan fashionable residence, he hoped to provide the owner a unique spatial experiences. Unconventionally, he chose to make the bathtub and changing area as the boundary between the public and private areas, and then

5. 開敞的空間設計引入自然光線，達到室內外交融的作用。6. 開放式格局放大空間並靈活各個場域的使用。7. 島台與餐桌利用高底錯落的形式融合，整合餐廚機能的同时，又能劃分出多個使用場景。8. 餐廳，天花板使用大面積柚木格柵平衡冷冽的色彩氣息。9. 多功能室，亦可作為餐廚空間的延伸。10. 客廳。11. 將浴缸與更衣區作為場域核心與公私領域的分界線。

5. The open space design introduces natural light to achieve indoor and external integration. 6. Open plan layout enlarges the space and provide flexibility. 7. The island counter and the dining table are integrated to form various height difference volumes, integrating the kitchen functions and multiple usage scenarios. 8. Dining room with teak wooden grille ceiling. 9. Multipurpose room also functions as a living and dining space extension. 10. Powder room. 11. The use of the bathtub and dressing room as the dividing line between the public and private spheres.





use the dining and living room to establish the spatial axis, to bring out two concentric circulations to connect the entire field. The open plan design was not only better for distributing natural light and achieve the integration of interior and exterior, it also enlarges the functional flexibility of each space.

The restaurant like dining space is the primary visual focal point when entering the project and is also the protagonist of creating the overall spatial atmosphere. The ceiling has a large area of teak grille to define the spatial tone. The warm wood balances the cool color atmosphere, and the orderly arrangement of wood grilles also cleverly conceals the air conditioning equipment, making the spatial perception clean and neat; The structural beam across the living and dining space is encased with mirrors and was then connected with gentle arcs to lessen the sense of volume and reduce the elevation difference between the ceiling planes.

In addition to enjoying meals, the dining space is an important place for social and interactive communication in the home environment. The designer combined the island counter and the dining table with a height difference volume that integrates the kitchen functions for multiple use scenarios. The kitchen is lined by open display cabinets. White flooring tiles have a grey texture and saturated burgundy accents. The gray scale background, paired with wood finishes, echoes a calm and luxurious feel to make the dining space an important area for social activities and daily life.

### **Light reflections lead to life rituals**

Mr. Tang further explained that people nowadays value the time to rest and relax so bathing is the time to enjoy at home. Most bathroom spaces due to the consideration of moisture problem and circulation issues are in corners and are relatively closed;



therefore, he separates the bathtub from the bathroom space and combine it with the dressing room. The translucent amber bathtub is placed on a dark green stone floor. Surrounded by a circular band of light, the light is reflected on the ceiling under the flow of water and interacts with the surrounding mirrored cabinet to make the bath an elegant ritual to enjoy life through open designs.

Although the whole project consists of a gray tone background, the designer boldly chose avant-garde red and green as the main theme. The inspiration was to transform the saturated red and green contrasting colors from the movie "In the Mood for Love" but filter it with a gray color layer so the collision of colors creates different spatial atmospheres. The choice of stucco, green glazed tiles, glass, wood grilles, etc. enrich the spatial expression.

Designer Tang believes that the wearing of time passing is a ritual of life, and although this project is in a bustling city, he expects the wine red and dark green materials and colors to outline curves, light, and shadow to define the inner essence of the home space.

## 建材分析 Material Analysis

1. 木格柵：餐廚空間的天花板使用大面積柚木格柵定義空間調性，而秩序排列的木格柵也巧妙地隱藏了空調設備，讓視覺更顯乾淨俐落。2. 灰泥塗料：天花板、牆面至地板，以灰泥塗料作為空間基底，營造沈穩調性。3. 釉面磚：綠色的釉面磚與紅色漆料形成對比。

1. Wooden grille: The ceiling of the kitchen uses a large area of teak grille to define the spatial tone. The orderly wooden grille also cleverly hides the air conditioning equipment to make the view cleaner. 2. Plaster paint: The use of stucco paint as background creates a calm character. 3. Glazed tiles: Green glazed tiles contrast with the red wall paint.

## 溝通重點 Communication Note

1. 設計師希望提供屋主不同的空間體驗，所以有別於以往傳統的格局配置，他選擇將浴缸與更衣區作為場域核心與公私領域的分界線。2. 利用兩條回字形動線串連場域，藉由開敞的空間設計不僅能更好的引入自然光線，達到室內外交融的作用，也能放大室內空間並靈活各個場域的使用。

1. The designer wanted to provide homeowners with different spatial experiences, so instead of the conventional layout, he chose to use the bathtub and dressing room as the dividing line between the public and private spheres. 2. Two loop circulations connect the space through the open space plan to introduce natural light, achieves indoor external integration, and expanded the indoor space and flexibility.

12. 將浴缸與更衣空間結合。13. 將浴缸獨立於衛浴空間之外。14. 主臥室，以灰色延續優雅調性。15-17. 次臥，選用紅色、灰色與木質調，延續公共空間的設計語彙。18. 次臥衛浴。

12. View of the dressing room. 13. Free standing bathtub. 14. Master bedroom with elegant gray tone theme. 15-17. Red color themed bedroom paired with gray color and wood finishes echoes the public space design vocabulary. 18. Bathroom view.

