

Idyllic Realm

逸境

設計者」近境制作 / 唐忠漢
攝影者」崑米總空間攝影
空間性質」住宅
坐落位置」台灣
主要材料」特殊漆、大板磚、石材、木地板、鐵件、
磁磚、木皮
面積」142 坪

Designers」Design Apartment / Tang Chung Han
Photographer」Weimax Studio
Category」Residence
Location」Taiwan
Materials」Special paint, slate, ceramic tile, stone, wood flooring,
metal, wood veneer
Size」469.4m²



用自然的材質、質樸的色彩，回應這座山中住宅；
同時重現屋主過往的累積，讓家成為人生經歷與收藏的容器。

對於多年在外辛苦打拼的異鄉遊子來說，什麼樣的地方是最宜居的環境？唐忠漢設計師說道，有別於市區豪宅比鄰而居的景象，《逸境》是一間位於山中、坐擁無敵景觀以及新鮮空氣的別墅住宅。長年在外經商的屋主，在後疫情時代的影響下，決定帶著一家四口回台定居，然而，想要享有寬敞生活空間的同時，卻也捨棄不了大台北都會區的便利機能，最後看重位於新店近郊的別墅聚落。

唐忠漢設計師受到基地周遭自然環境的啟發，決定以「大地主義」作為設計主軸，來回應這座坐落於山中的房子《逸境》。全作從材質至色調，皆以「自然」為核心理念，選用帶有大自然肌理的原木、洞石、微水泥等，搭配木、石的天然色彩，用寧靜調性呼應環境特色。

時間的停留感

《逸境》基地環境清幽，是一帶有日式簡約風格的別墅建築，共有五層樓，地上四樓與地下一樓，並擁有獨立的前庭與後院。唐忠漢設計師認為，既然遠離了車水馬龍的市中心，對於居住者來說，最大的不同除了眼前的景觀，其次就是對於「時間」的感受，當步調不再汲汲營營，會讓人覺得時間也好像跟著慢了下來。所以，他用靜謐與安定的氛圍，來突顯時間在空間中的停留感。



Tang Chung Han



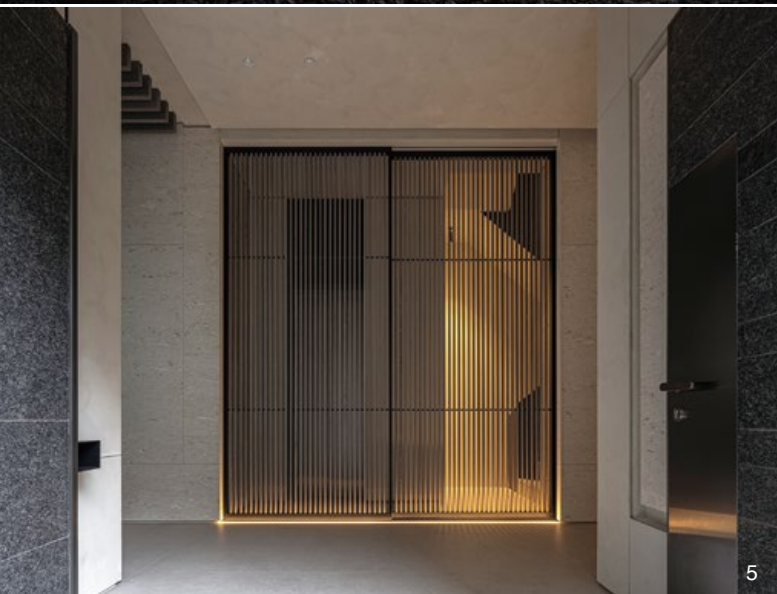
近境制作 / 唐忠漢
近境制作 設計總監

Andrew Martin 國際室內設計大獎得主
義大利 A' Design 鉑金獎得主
生於亞洲，近境的設計源自於對生活的熱情，強調自然、清晰的原始設計，象徵年輕與活力，代表未來空間的發展方向，近境認為，最好的設計便是創造未來。

Design Apartment / Tang Chung Han
Design Apartment originated in Asia with a passion for life emphasizing natural, clear and authentic design, symbolizing youth and vitality, and representing the developmental direction of future space.

1. 客廳，隨著大門位置的移動，有了更加寬廣且完整的立面，並且成為一個可獨立又開放的活動場域。2. 一樓平面圖。

1. View of the open and spacious living space. 2. Ground floor plan.



一樓為公共空間，規劃客廳、中廚料理、西廚吧台與圓桌餐廳。為了讓每個場域都更顯方正與完整，設計師重新調動了出入口的方向，讓居住者需要多步行幾步路，轉個彎後才能進入，藉此在行進之中慢下步伐，為出門與回家增添儀式感。而當初建商為了讓居住者在家即可享受大自然環境的舒適感，在建築上規劃了大量的景觀空間，為了不破壞此優點，設計師在格局布劃時也盡可能保留下每面窗景與景致。

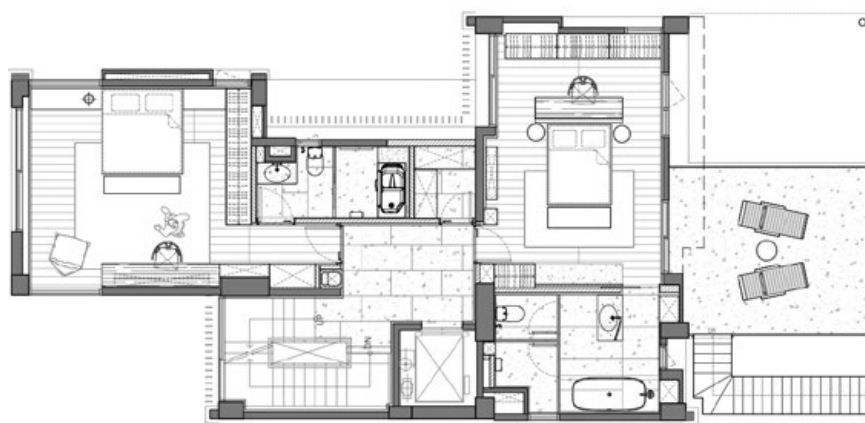
客廳隨著大門位置的移動，有了更加寬廣且完整的立面，並且成為一個可獨立又開放的活動場域；陽光與綠意景觀從兩面窗戶進入，塑造被自然擁抱的舒心感受。為滿足屋主一家人的生活習慣，餐廚空間規劃適合大火快炒的中式料理區、結合餐桌的開放式輕食吧台區以及提供家庭聚會的圓桌餐廳。平時一家人會在西廚吧台區一起用餐，若有親友來訪則會到餐廳

聚會，透過機能的劃分為屋主塑造不同的使用情境。二、三樓為私區臥室，二樓佈置兩間臥房，三樓則規劃主臥房。延續公區予人的寧靜氛圍，選用質樸且溫潤的材料與色調，搭配圓弧收邊，營造舒心、愜意的休憩環境；在私區裡沒有過多搶眼的設計與元素，而是讓窗外景觀成為空間主角。四樓則是家事間與頂樓露台。

而地下室除了停車空間，設計師保留了一個偌大的活動場域，滿足屋主對於生活的嚮往。從事娛樂產業的屋主，雖然已經退休了，但仍

希望將他事業的輝煌景象帶入家中，為此，設計師規劃了一個可以品酒、唱歌、跳舞、玩樂與聚會的多功能娛樂空間；也因為這個空間不同於一般的休閒型態，而是將它視為屋主事業的延續，所以有別於住宅空間的靜謐氛圍，設計師利用色彩反差展呈空間情緒。轉化星空概念，用圓頂造型搭配間接燈光，再用鏡面與玻璃質地，透過光影變化營造虛實交錯的迷幻景象。

唐忠漢設計師認為，家不單是居住的場域，家可以作為人生的經歷與收藏的容器，他在《逸境》之中重現屋主過往人生的累積與回憶，滿足屋主一家人對於生活的想像與熱情。採訪 歐陽青昀



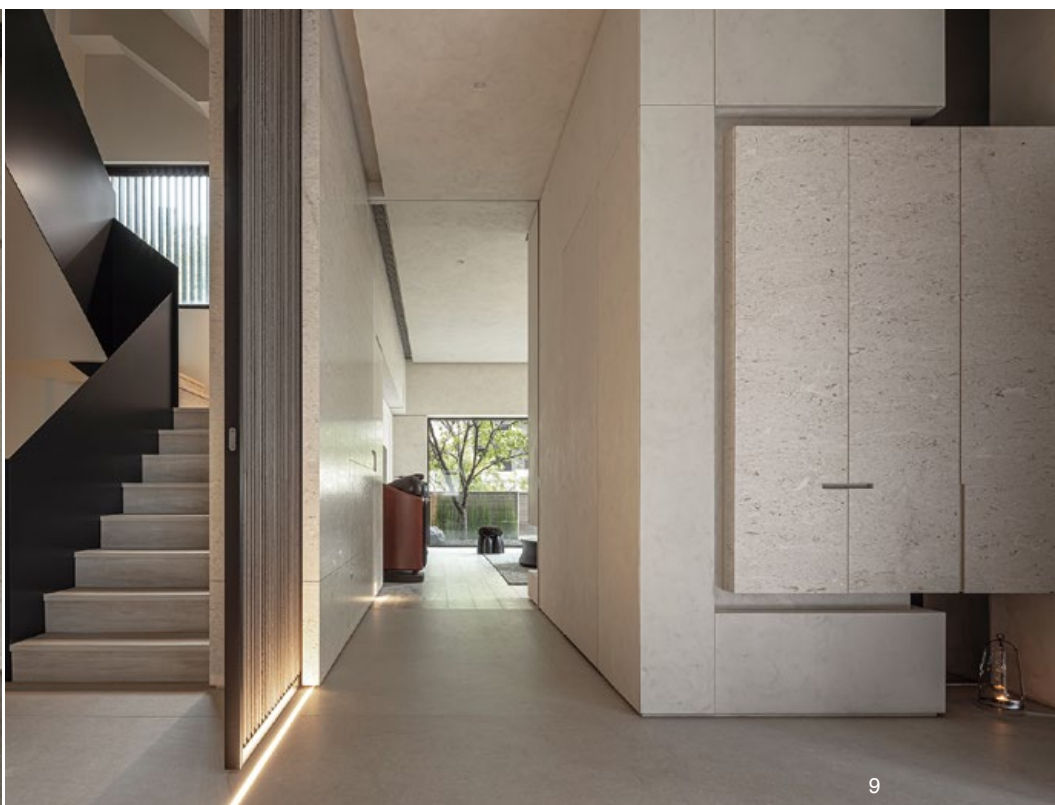
7

3.4. 此案基地環境清幽，是一帶有日式簡約風格的建築。5.6. 設計師重新調動了出入口的方向，讓居住者轉個彎後才能進入，為出門與回家增添儀式感。7. 二樓平面圖。8.9. 一樓公共區域，用一條長廊貫穿水平動線。

3.4. The project is in a quiet neighborhood, a building with a Japanese minimalist style. 5.6. The designer re-located the direction of the entrance, adding a sense of ritual to entering the home. 7. Second floor plan. 8.9. The public area on the first floor is organized with a circulation corridor.



8



9



10. 客廳，陽光與綠意景觀從兩面窗戶進入，塑造被自然擁抱的舒心感受。11. 三樓平面圖。



11

What is the most livable home environment for a seasoned businessman who has worked abroad for many years? Designer Tang said that unlike the overly crowded scene of luxury houses in the city, "Idyllic Realm" is a villa located in the mountains, with invincible views and fresh air. Under the influence of the post-epidemic era, the homeowner decided to return to Taiwan with his family of four. While he wanted to enjoy a spacious living space, he could not give up the convenience of the greater Taipei metropolitan area, therefore he decided to settle in a villa located in the suburbs of Xindian.

Inspired by the natural surroundings of the site, designer Tang decided to use "Land Art" as the design theme, to



10

10. Sunlight and greenery fill the spacious living room, creating a comfortable embraced by nature feeling. 11. Third floor plan.

resonate being in the middle of mountain in an "Idyllic Realm" residence.

From the materials to the color tone selection, the entire design is based on the core concept of "nature." The use of materials with nature textures, like untreated wood, travertine, cement, etc. echo the characteristics of the environment with a quiet tone.

Standing still in time

"Idyllic Realm" is a Japanese minimalist style villa, a building with a total of five floors, and has separate front and back yards. Designer Tang believes that since it is far away from the busy city center, the remoteness not only brings the landscape closer to the dwellers, but also the feeling of "time" seems to pass at a slower pace by using a quiet and stable atmosphere to portray the sense of time staying in space.

The first floor is the public domain, with a living room, kitchen and western style bar counter and dining space. To make each space a more complete spatial definition, the designer reoriented the direction of the entrance, so that the occupants need to take extra steps and turn a corner before entering. This intentionally slows down the pace in the process, adding a sense of ritual to entering the home. To allow residents to enjoy the comfort of the natural environment at home, the builder planned many



12



13



14

12. 輕食吧台區，結合餐桌的開放式設計，為屋主一家人平時用餐的空間。13. 中式料理區，用拉門形成獨立式場域，阻隔油煙。14. 餐廳，圓桌提供家庭聚會使用。15. 二樓梯間。16. 女孩房，陽台與一樓的露台垂直串連。17. 女孩房衛浴。18. 男孩房，天花板利用造型營造天光意象。

12. Open counter is ready for simple meal prep combined with a dining table. 13. Fully equipped kitchen is design to be an independent space with a sliding door to block cooking smoke. 14. Dining room, round table for family gatherings use. 15. View of the mid-level stairwell. 16. Girl's bedroom view to the balcony. 17. Girl's bedroom bathroom. 18. In the boy's room is modeled ceiling to create the image of sky.

建材分析 Material Analysis

1. 全作從材質至色調，皆以「自然」為核心理念，選用帶有大自然肌理的原木、洞石、微水泥等，搭配木、石的天然色彩，用寧靜調性呼應環境特色。2. 地下室，多功能娛樂空間，用深色反差展現空間情緒，再用鏡面與玻璃，營造虛實交錯的迷幻景象。

1. From the selection of material to the color scheme, the entire project is based on the core concept of "nature", using untreated wood, travertine, micro cement, etc. with natural textures and distinct color, echoing the characteristics of the environment with a quiet character. 2. The multi-functional entertainment space in the basement has dark color contrasts to express the space quality, and then has mirrors and glass to create a mirage like scene where the virtual and the real are intertwined.

溝通重點 Communication Note

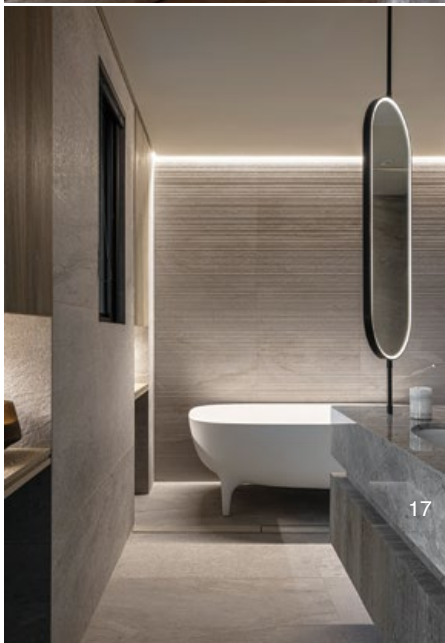
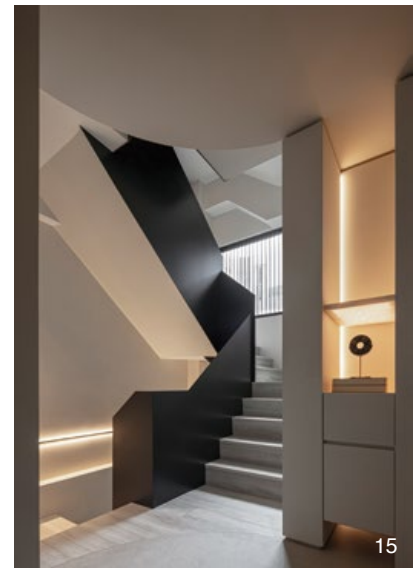
1. 設計師重新調動了大門出入口的方向，讓一樓公共空間的每個場域都更顯方正與完整。2. 設計師受到基地周遭自然環境的啟發，決定以「大地主義」作為設計主軸，來回應這座坐落於山中的房子。

1. The designer reconfigured the entry layout, allowing each of the public spaces on the first floor their own organized and complete spatial quality. 2. Inspired by the natural environment around the site, the designer decided on a "Land Art" concept as the design theme for this house located in the mountains.

landscape spaces, and the designer also tried to retain the window views and scenery on each side as much as possible.

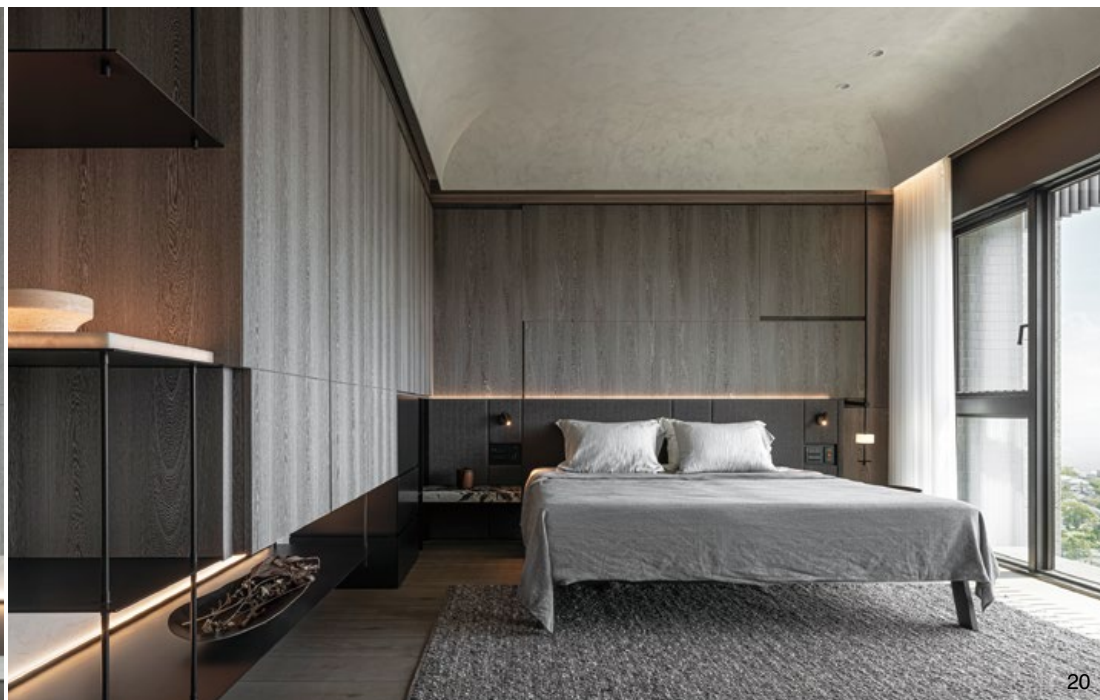
The entry layout adjustment allows a more spacious living room that can function as an independent and open activity field. Sunlight and greenery freely flow into the space, creating a comfortable feeling of being embraced by nature. To meet the living habits of the family, different dining arrangements were planned. The fully equipped kitchen is planned to be suitable for stir-frying style of food preparation, and an open counter bar area combined with a dining table, and a round table restaurant serves family gatherings. Usually, the family will dine together in the open kitchen area, with the formal dining room reserved for relatives and friends' visits.

The upper floors are private bedrooms, two bedrooms on the second floor and the third floor is the master bedroom suite. Continuing the quiet atmosphere of the public area, selected simple and warm finish materials create a comfortable rest environment. In the private area, there are few eye-catching designs and elements, so the landscape outside the window becomes the protagonist of the space. On the fourth floor, there is a family room, and a terrace on the top floor.





19



20



21



22

19. 三樓書房。20. 主臥室，選用質樸且溫潤的材料與色調，搭配圓弧收邊，營造舒心、愜意的休憩氛圍。21. 主臥衛浴。22. 主臥更衣間。23. 四樓平面圖。24. 地下室平面圖。25. 多功能娛樂空間，轉化星空概念，用圓頂造型搭配間接燈光呈現光影變化。26. 多功能娛樂空間，配置高階音響與設備。27. 多功能娛樂空間，品酒吧台用鏡面與玻璃，營造虛實交錯的迷幻景象。28. 多功能娛樂空間，利用色彩反差展呈空間情緒。

19. Study room on the third floor. 20. Master bedroom finished with simple and warm materials to create a comfortable resting atmosphere. 21. Master bathroom. 22. Master bedroom dressing room. 23. Fourth floor plan. 24. Basement plan. 25. Multi-functional entertainment space has a domed shape ceiling and uses indirect lighting to transform the concept of starry sky. 26. Multi-functional entertainment space equipped with professional grade audio equipment. 27. Multi-functional entertainment space, with mirrors and glass at the bar counter, to create a mirage like atmosphere. 28. Multi-functional entertainment space, intense color contrasts express the spatial character.



23



24

In addition to the parking space in the basement, the designer reserved a large activity area to meet the owner's retirement life planning. The owner was involved in the entertainment business and still wants to bring the glory of his career into his home; therefore, a dedicated multi-functional entertainment space was planned where he can host party or friends' gatherings. This space is regarded as a continuation of the owner's career. It is different from the quiet atmosphere of the dwelling space where the designer used color contrasts to express the distinct character of the space. To recreate the concept of a starry sky, the designer employed a dome shape with indirect lighting, and then used a mirror and glass texture to create a psychedelic scene through the change of light and shadow.

Designer Tang believes that home is not only a place to live, but also a container for life experience and collection. He reinterpreted the accumulation of objects and memories of the owner's past life in "Idyllic Realm" and fulfilled the imagination and enthusiasm of the owner's family for life.



25



26



27



28