

# Lushness in greenery · Indulgence in art

## 環抱蔥鬱 · 奢藝盛宴

設計者」 創研空間設計有限公司 / 何俊宏

參與者」 卓施彤 李翎

攝影者」 李國民空間攝影事務所

空間性質」 住宅

坐落位置」 台灣

主要材料」 Salvatori 卡拉拉石材、義大利萊姆石鑿面、月亮銀灰石、自然木節眼白橡海島型木地板 & 木壁板、實木植物油染色、手工礦物塗料、布紋人造皮壁板-Fenix 板、鐵件、進口石英磚  
氟酸烤漆玻璃

面積」 76 坪

Designers」 CREATE + THINK DESIGN STUDIO / Arthur Ho

Participant」 Priscilla, Lee Ring

Photographer」 Koumin Lee

Category」 Residence

Location」 Taiwan

Materials」 Salvatori stone, limestone, natural wood flooring, mineral paint, Fenix board, iron, glazed

Size」 251.2m<sup>2</sup>



1

## Arthur Ho

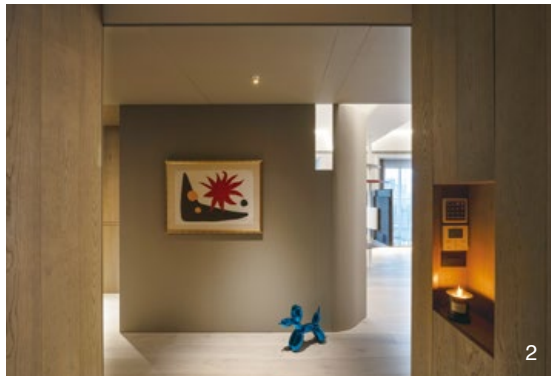


創研空間設計有限公司 / 何俊宏  
紐約 Pratt Institute 室內設計碩士、丹麥 DIS 建築及設計課程研究、紐約 Gene Kaufman Architect P.C. 設計師、香港商穆氏設計規劃有限公司設計師，2005 年於台北成立創研空間設計。  
創 = 開創力 / 創造力，研 = 研究力 / 思考力：創 + 研，為理性與感性的結合，左腦與右腦的並用，有生活的實用，有心靈的感觸，用心思考、熱情創造，希望用設計團隊對空間的看法與詮釋，提供給客戶不同的空間體驗與感受。從潛藏於基地與人物的時空背景理出脈絡，去詮釋、表述設計的獨特與專屬。不僅是美學感官的外顯訴求，更強調符合本質文化的內在精神，蘊含著對於當下生活浪潮的反思。重要得獎紀錄如德國國家設計獎、iF Award、紅點設計獎、義大利 A'Design Award、香港 APIDA 大獎、日本 Good Design Award、台灣 TID Award 等。

CREATE + THINK DESIGN STUDIO / Arthur Ho  
M.A. in Interior Design, Pratt Institute, New York  
DIS Architecture and Design Course Research, Denmark  
Designer of Gene Kaufman Architect P.C., New York  
Designer of M Moser Associates, Ltd., Hong Kong  
2005 Founded CREATE + THINK DESIGN STUDIO, Taiwan  
Creativity, exploration, critical thinking, the combination of rationality and sensibility, the practicality of life, the sensation of the soul, the enthusiasm to create, to interpret and express the uniqueness and exclusivity of design hope to provide clients with different space experiences and feelings. It is not only the explicit appeal of the aesthetic sense, but also emphasizes the inner spirit to align with essential values to contain the reflection on the current wave of life.  
Important awards received include the German National Design Award, iF Award, Red Dot Design Award, A'Design Award in Italy, APIDA Award in Hong Kong, Good Design Award in Japan, TID Award in Taiwan, etc.

全案主軸旨在突顯基地坐落位置的絕佳優勢，同時藉由綠意的圍繞打造宜人環境；大器經典的家具與迷人高貴的精品收藏展現了業主的獨到品味，完美體現高雅質感。

住宅是居住者興趣、喜好的投射，也是情感的匯聚點。《環抱蔥鬱·奢藝盛宴》一案坐落於繁華的台北市信義路上，基地的大面連貫窗景與 L 型陽台成為本作的絕佳優勢，不僅捎來了豐沛的採光及川流不息的街頭景觀，L 型陽台更成為專屬的城市綠洲，讓自然氣息和色彩療癒身心。



### 被綠意環抱的空間

何俊宏設計師表示，業主夫妻為中部的傳產製造商，因孩子北上求學而於台北置產，不過，本作並非其長住處所，主要定位為休憩、聚會使用，因此特別著重於公共空間的擘劃，將大面窗景視為核心，嘗試構築被綠意環抱的室內景致。有鑑於此，設計團隊將平面格局做了大幅度的調整，入口處大約位於長型基地的中心點，右側是開放區，左側則為私領域，公區以水平方式劃分空間軸線，將廚房等機能場域置於平面後方，依「食材進、美食出」的烹煮流程形成雙向動線，並透過末端處的折角開口牆面連結中島吧檯，不僅可作為料理的預備區，也身兼聚會的小空間。

綜觀全案，大片綠意盎然的植生牆躍入眼簾，成為宅邸獨樹一幟的表徵。何俊宏解釋道，由於建物與隔壁舊大樓天台極近，有安全疑慮的考量，再加上此面為開放空間之東向端景，幾經考慮後決定以綠植牆的設立作為解套，既可形塑圍牆與鄰棟隔斷，解決安全問題，亦可化為生活容器的蔥鬱背景，讓日常時光與綠相伴；綠意中更是特別做了微量開口，滿足植栽的日曬需求，同時引入些許斑駁水泥色，豐富景深。

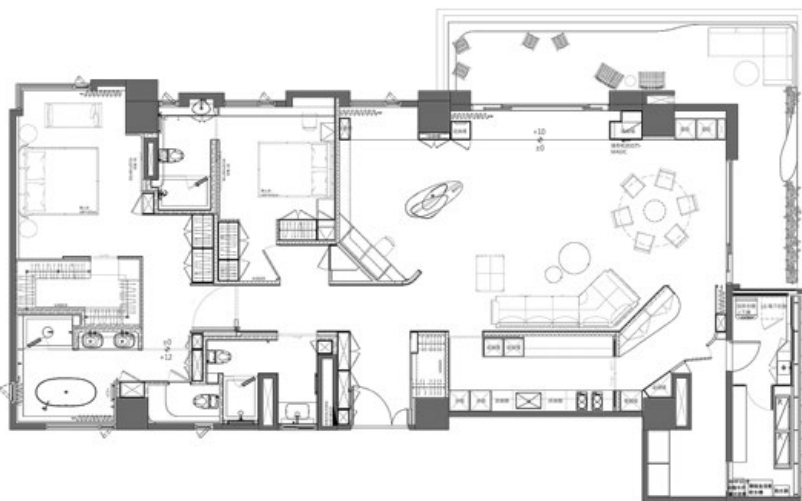
1. 此案以交流、聚會等場景為主要需求。東向端景的植生牆在深化空間綠意之餘，亦解決了與鄰棟棟距過近的安全疑慮。2. 室內結構與點綴色彩皆啟發自玄關這幅畫作。公私領域藉由玄關量體清晰劃分，向右為公共空間，向左則為臥室。

1. This project mainly hosts entertainment and gatherings. The planted wall in the east-facing greenery wall solves the safety concerns of being too close to the adjacent buildings. 2. The design's inspirational painting is in the entry vestibule.



3. 透過摺疊天花整合樑帶。空間軸線採水平切分，將機能場域如廚房安排於平面後側，放大客餐廳的尺度。4. 平面圖。

另一方面，女主人是精品愛好者，與植生牆對應的是以卡拉拉凹凸刻紋石材構建的展示牆，薄鐵板透過如摺紙般的手法，以 U 形及 L 形平面嵌於其中，細膩強化了石材既有的切割紋理，展演精品品牌與藝術家聯名合作的各式收藏。設計師進一步分享，材質搭配的基準他參考了建物外觀的灰階，選擇相似調性的石材及白灰色手工塗料作為打底，地坪亦選定稍偏灰



的木色，使空間和諧沉靜，不會過於喧嘩；至於串接公私領域的廊道軸線，則以灰綠色的帆布紋皮革裱板作為壁面裝飾，隱約之間與外圍綠植產生意象上的連結。

#### 富含工藝之美的家具

空間色彩的建議則啟發自懸掛於玄關、由著名藝術家 Alexander Calder 所創作的畫作，片狀感與強烈色彩成為何俊宏的靈感，遂將這些語彙運用至豎立於開放區的電視架結構，也無形劃分了書房跟客廳的界線；餐廳則被布局於綠植牆前方，



3. Ceiling details. 4. Floor plan.

頂級精品品牌 LV 的餐桌椅成為視線焦點，精緻高超的皮編工藝和輕量通透的玻璃桌板令此視角更為輕盈。此外，沙發、茶几等家具為義大利進口品牌 Poltrona Frau，盡顯居住者的質感追尋。

該如何突顯 L 形陽台的優勢也成為設計團隊著墨的切點之一。如前述所提，公共區域水平切割前後區，並藉由摺疊天花橫跨樑帶，創造空間的延續感；前區面向林蔭大道，設計師特別架高陽台出入口的踏面，塑造一種心境轉換的儀式感，置身戶外彷彿踏入另一個時空，依附女兒牆的檯面提供了擺放飲品、餐食的功能，也將整個陽台動線銜接至植生牆，而燈光的明暗層次更勾勒出悠閒情調，打造住家的舒心角落。

#### 燈光輔佐空間氛圍

主人空間共分為睡眠與沐浴兩大區，睡眠區保持灰階，安定沉穩，床頭右側是建築原始 L 形角窗，可鳥瞰信義路，再透過氣氛及間接照明襯托情境；沐浴區壁地覆以砂岩，獨立浴缸作為中心，左側開窗是鄰棟無窗的外牆，有助於空間延展，同時兼顧隱私。

燈光布局則依循著空間架構進行強化，例如架高的踏階下方及陽台檯面下方裝設燈條，營塑一股飄浮的輕巧感受，精品牆的折板細膩點綴光源，讓收藏品成為主角；造型燈具講求藝術性，優雅點亮室內表情。何俊宏說道，此作融合了綠意、藝術與精品，透過植栽牆及色彩的解構豐厚了居住者的體驗，讓他們在這座堡壘中品味生活的美好時刻！採訪 | 陳映璇



5



6



7

5. 基地擁有大面連續的落地窗，景致絕佳，設計師將通往戶外陽台的踏階架高呈現，增添行進的儀式感。6. 獨立站立於客廳和書房之間的電視架，其片狀型態和色彩鋪陳援引自玄關畫作。7. 精品展示牆與植生牆對望，卡拉拉石材的天然刻紋層次細膩，展演著女主人的精彩收藏品。8. 書房除靜態模式外，亦可身兼女主人的簡易運動空間。9. 依據機能做公共區域的前後分割，維持自由流動的迴游空間。10. LV 餐桌椅與盎然綠意相映成趣。由於家具已呈現出極致的工藝技術，主燈遂挑選簡約型態。11. 依「食材進、美食出」的烹煮流程形成了雙向動線。

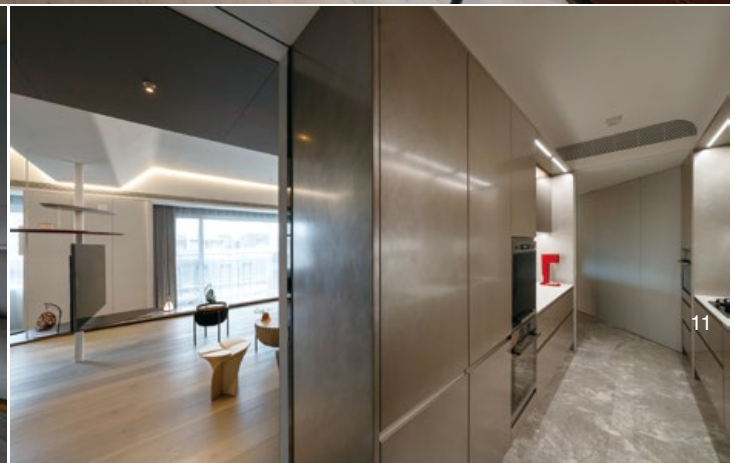
5. The existing building with large continuous floor-to-ceiling windows offers excellent views. 6. The free-standing entertainment wall between the living room and the study consists of colors and detailing inspired from the painting in the entrance. 7. The boutique display wall showcases the wonderful collection of the hostess. 8. The study den can multi-purpose as a simple exercise space for the hostess. 9. Dividing the public area according to functions to maintain the free flow of the open plan design. 10. LV Dining table and chairs are set in contrast to the lush greenery. 11. A two-way circulation is formed according to the cooking process of ingredients in and food out strategy.

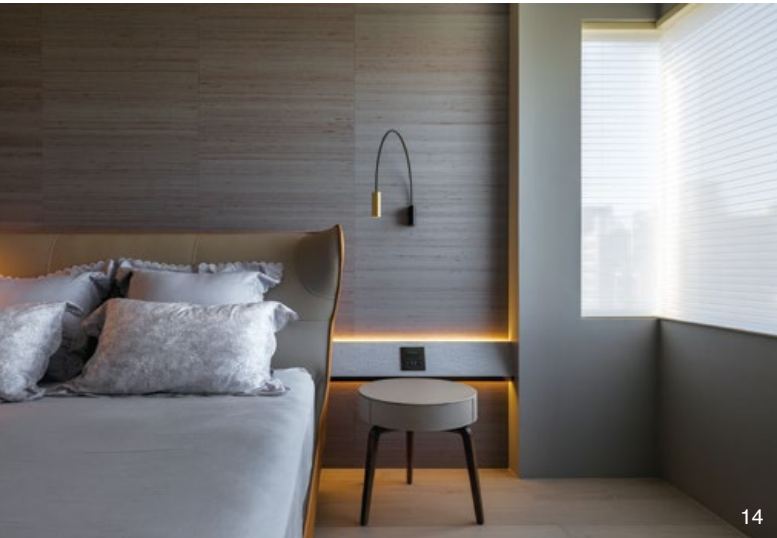
Home reflects the interests and likes of the occupants, and it is also a rally point of emotions. < Lushness in greenery - Indulgence in art > is located on the bustling Xinyi Road in Taipei, the large continuous window view and L-shaped balcony of the building offers the excellent advantages of abundant light and street scenery to become an exclusive urban oasis, allowing the natural breath and color to heal the body and mind.

### Surrounded by greenery

The project is not the owner family permanent residence but mainly functions as gathering place for the family, therefore the emphasis focused on the planning of public spaces, intended to construct an indoor scape surrounded by greenery. In view of this, the design team made a significant adjustment to the floor plan. The entrance is located at the center point of the elongated rectangular plan, with public space to the right and the private domain on the left. The public area is organized by a horizontal axis, forming a two-way circulation according to the cooking process of "ingredients in and food out" concept, connecting the island counter through the corner opening which can not only be used as a food preparation area but also as a small gathering space.

Step into the space and be greeted with the large greenery wall view that is the unique symbol of the mansion. Ho explained the proximity of the building to the adjacent structure raised privacy and safety concerns, but there was interest to retain the east facing window opening. Therefore, it was decided to set up a greenery wall that not only functions as a barrier between the fence and the adjacent building, but it is also a lavish background for the living container, so daily time can be accompanied by greenery. The opposite side of the greenery is a display wall made of Carrara carved stone inlaid with origami-like thin iron plate delicately folded which strengthens the texture of the stone that graciously presents the hostess's various luxury collections. The designer shared the preference of using the gray color tone of the building





12. 帆布紋皮革裱板作為壁面裝飾，延伸出主要的行走路徑。13. 主人空間。往左是主臥沐浴區，往右是睡眠區。14. 床頭右側維持建築原始的 L 形角窗，輔佐情境光源形塑朦朧感受。15. 睡眠區保持灰階，營造安定沉穩之調性。16. 依附女兒牆的平台連結了陽台和綠植；燈光的安排強化了享受氛圍。17. 通往主臥衛浴的廊道。18. 獨立浴缸作為中心，開窗設計讓場域有了延展。19. 客用衛浴。

12. Main circulation path lined with canvas grain leather panels. 13. Master bedroom suite. 14. The existing L-shaped corner window of the building remained to offer faded light into the bedroom with a hazy feeling. 15. The sleeping quarter was kept in a gray tone to create a stable and calm atmosphere. 16. The balcony platform along the parapet wall and the lighting arrangement reinforces the atmosphere of enjoyment. 17. The corridor leading to the master bathroom. 18. The free-standing bathtub is the focal center of the space. 19. Guest bathroom.

## 建材分析 Material Analysis

1. 為呼應建物色彩，材料多選擇灰色調性。2. 灰綠色帆布紋皮革裱板被運用於串連開放私密的動線上，與植栽牆形象相扣。3. 家具燈具與衛浴設備皆為原廠進口品牌，如 LV、Poltrona Frau、Occhio、agape、DURAVIT、hansgrohe、AXOR 等。

1. Consistent with the exterior building color theme, the selection of the interior finish material are mostly gray tones. 2. The gray-green canvas leather panels along the circulation are used to connect the open and private zones which interlocks with the image of the planting wall. 3. Furniture, light fixtures, and bathroom accessories are all directly imported brand names, including LV, Poltrona Frau, Occhio, agape, DURAVIT, hansgrohe, and AXOR.

## 溝通重點 Communication Note

1. 本作以相聚、交流等場景為主要需求，盡量放大公共空間的尺度。2. 綠植牆的規劃消弭了與鄰棟過近的安全疑慮，也讓綠意成為最自然的襯景。3. 女主人的精品收藏亦為全作重點，與卡拉拉石材牆的刻紋相互映襯。4. 擷取玄關畫作色彩與元素，將語彙分布至住宅各處。

1. The main purpose of this project was to facilitate gatherings and entertainment types of functions, therefore enlarging the public space scale was necessary. 2. The planning of the green wall reduced the safety concerns of being too close to the neighboring buildings, and makes the greenery the most natural backdrop. 3. Featuring the hostess's fine luxury collections was another focus of the project. 4. Capture the colors and elements of the paintings in the vestibule, and then distribute the vocabulary throughout the space.

exterior, choosing an interior stone finish with similar tonality pair with white-gray hand-painted as overall background, also selected a slightly grayish wood color flooring to compose a harmonious and quiet atmosphere.

Along the corridor linking the public and private domains the gray-green canvas textured leather panels used as wall decoration create an imagery connected with the surrounding greenery.

### **Furniture rich in craftsmanship beauty**

Inspired by the intense color contrasting Alexander Calder painting hanging in the vestibule, Ho applied its geometrical vocabulary into the space design, which invisibly divides the line between the study and the living room. While the dining room is placed in front of a green wall, the LV dining room furniture are the focal point, enhanced by the exquisite leather weaving and lightweight glass tables. In addition, sofas, coffee tables and other furniture are imported from Italy by Poltrona Frau, showing the quality pursuit of the occupants.

How to highlight the advantages of the L-shaped balcony was another focal point of the design team. The public space is horizontally subdivided but linked by folding the ceiling plane to create a sense of spatial continuity. The raised landing step at the balcony entrance creates a sense of ritual of mood transformation, and being outdoors is like stepping into another time and space. The countertop along the parapet wall allows the function of food preparation and connects the entire balcony circulation to the plant wall. The light and shade levels outline the leisurely atmosphere, creating a comfortable corner.

### **Lighting complements the atmosphere**

The master suite is divided into two zones, the sleeping area is finished in gray tones conveying a stable and calm feeling. The bathing area features a free-standing bathtub surrounded by sandstone flooring, and the window opening on the left faces the windowless exterior wall of the adjacent building. This helps extend the space while still maintaining privacy.

The lighting design is strengthened by the spatial framework. The linear fixture under the stair treads and underside of balcony counter creates a floating lightness. The folded panels of the boutique wall delicately embellish the light source, so that the collection becomes the protagonist, and the sculptural lamps emphasize the artistry to elegantly illuminated the interior expression. Designer Ho said that this project integrates greenery, art and fine luxury goods, and the greenery planting walls enriches the living experience, so the residents can savor the beautiful moments of life in this castle!

