

Ink Odyssey

行墨鑄境

設計者」 沈志忠聯合設計 / 沈志忠 陳佳囊
攝影者」 狐色影像工作室 / 徐詠倫
空間性質」 住宅
坐落位置」 台灣
主要材料」 染色木皮、系統板、石材、鍍鈦金屬、磁磚、皮革、特殊漆、木地板
面積」 64.3 坪

Designers」 X-Line Design / Chih-Chung Shen, Chia-Ying Chen
Photographer」 Hu-Se Image Studio / Yung-Lun Hsu
Category」 Residence
Location」 Taiwan
Materials」 Stained wood veneer, stone, titanium plated metal, ceramic tile, leather, special paint, wood flooring
Size」 212.6m²



全作整合了跨年齡層居住者的日常需求，周全拿捏平面尺度與比例；
深邃又具靈魂的墨色貫穿空間，佐以材質的搭配展演，共同譜出一首精彩的生活樂章。

對於私人宅邸的陳設喜好，人各有志。《行墨鑄境》的業主，對深色調風格情有獨鍾，而他也是一位對於精緻生活品味有所追尋的紳士。沈志忠聯合設計團隊表示，業主長期於中國大陸經商，因幼時記憶與地緣關係，選擇在牯嶺街附近購入返台時的居所，並將父母接來同住，有鑑於此，作為跨代家庭成員共度美好生活的堡壘，在整體擊劃上需滿足居住者各別的日常需求，也必須兼顧空間獨一無二的靈魂，構築別具美感的家宅面貌。

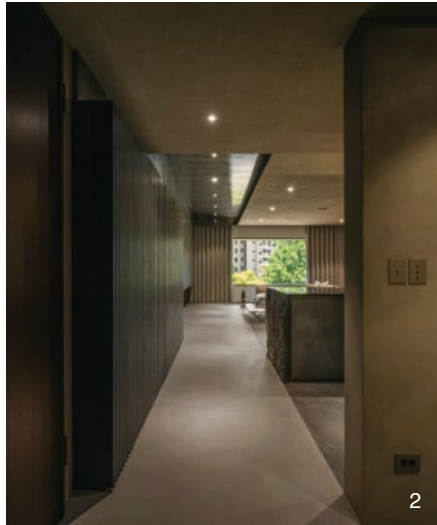
一幅精緻的墨色畫卷

基地最顯而易見的結構限制，在於沙發背牆上方的一支大樑，團隊盡可能地將大部分樑柱隱於書房和客廳的櫃體中，外露部分則貼附鏡面不鏽鋼，弱化可能產生的視覺壓迫，此手法也讓天花板得以抬高，不會因樑柱而被細碎切分。設計師分享，不鏽鋼材質單看雖然生冷，但包覆樑柱時卻可映射環境的光影及生活軌跡等畫面，豐厚空間意蘊。

考量到較為高齡的長輩居者，平面布局格外注意無障礙需求，公共區域幾乎未見高低差，同時賦予走道動線足夠的寬度，提供輪椅行進的餘裕。談及設計主軸，全案以「墨鑄」為發想靈感，旨在追求呈現出宛如墨水般深邃且多層次的張力。設計師進一步解釋道，中國傳統繪畫「國畫」中所謂的「墨分五色」，意指濃、淡、乾、濕、黑五種濃淡乾濕不同的墨色，藉用筆的墨色變化生動表現物象的色調，他們擷取此一概念，在協調融合的深色調性下，透過具脈絡的思維細膩疊砌場域各自的光彩。

1. 《行墨鑄境》透過材料表情與設計手法，演繹墨水的濃淡深淺，構建專屬業主的個性宅。2. 入門走道特別塗鋪偏冷灰的特殊漆，藉此強化行走的儀式感與心境轉化。

1. Through material composition and design techniques, project "Ink Odyssey" reinterpreted the traditional ink painting expressions to create an exclusive home for the owner. 2. The entrance corridor was finished with cold gray tone special paint to strengthen the sense of ritual and mood transformation of proceeding arrival.



Chih-Chung Shen, Chia-Ying Chen



沈志忠聯合設計 / 沈志忠 陳佳蓉

沈志忠 1998 年畢業於倫敦藝術大學雀爾臺學院，返台後陸續創辦建構線設計有限公司與沈志忠聯合設計有限公司，並擔任負責人與設計總監職務。其設計理念是透過建構的「線性張力」探索空間本質，挖掘空間與空間相互的恆定關係。執業以降，國內外獲獎無數，歷年來囊括涵蓋亞洲及歐美等指標性設計金獎獎項，如 2019 年英國 London Design Award、2019 年加拿大 Best of Canada Design Award、2016 年義大利 A' Design Award、2008、2011、2012、2014 台灣 TID Award 四屆金獎等，更於 2017 年受邀成為義大利知名設計大獎 A' Design Award 的評審委員，同時受邀出席兩岸演講邀請，不勝枚舉。陳佳蓉 臺灣大學歷史系、臺北藝術大學劇場設計所舞台設計。著迷空間與人的關係，致力探索空間讓生活美好的議題。

X-Line Design / Chih-Chung Shen, Chia-Ying Chen

Chih-Chung Shen graduated from University of the Arts London in 1998. After returning to Taiwan, he founded X-Line Design Co., Ltd. in 2005, then set up Chih Chung Shen Union Design Co., Ltd in 2013, and serves as both director and design director. The firm's design concept is to explore the essence of space through a constructed "linear tension." This allows the study of the flowing relationship between spaces as well as the constant relationship between human perceptions and space. The practice has received numerous awards, including 2019 London Design Award, 2019 The Best of Canada Design Award, 2016 A' Design Award, TID gold awards in year 2008, 2011, 2012, and 2014, etc. In 2017, Chih-Chung Shen served as a jury member of the Italian A' Design Award & Competition. At the same time, he was invited to participate in cross-strait speeches.

Chia-Ying Chen
Dept. of History, National Taiwan University.
Master of Fine Arts, Taipei National University of the Arts.

Captivated by the relationship between space and people, devoted to exploring the topic of making life better through space.



漸進式格局劃分住宅向度

另一方面，設計師巧妙地於公私領域之間置入過渡區域作為分隔，例如通往主臥室前需先經過身兼書房和私人起居室的多功能空間，往其他房間的動線上則規劃了內玄關，讓視線獲得緩衝，避免直接的對視，在開放和隱私的界線營塑了良好平衡。此外，設計團隊也十分重視室內的穿透性以及軸線的延伸，由於基地周圍擁有絕佳的綠帶景致，蔥鬱綠意藉由窗景引入內部，成為濃厚色彩的點睛之筆，亦開闊了心境，讓暗色空間沉穩卻不沉重；場域之間串連卻又獨立的特性在確保居住者不互相干擾的生活品質之餘，也顧及了情感交流的彈性。

豐富的異材質混搭亦是本作一大特色，包括特殊漆、金屬、立體磚、原石和鍍鈦等，虛實張力細緻而多變。設計師說明，從玄關進入客廳，由厚實深色石皮覆蓋的中島映入眼簾，粗獷的立面肌理和精細打磨的鏡面檯面捎來多重感官質地；特殊漆選用了冷灰及暖灰兩種色澤共築空間基底，創造立面與切面的延續性與細微差異；木皮亦經染色打磨等工序，突顯質樸溫度。而格柵語彙也是重要的一環，墨色的呈現不僅止於物件色彩，更需和諧整合凹凸面的陰影變化，描繪深淺躍動的韻律感。



3

搶眼單品打造有型空間

主臥衛浴中個性十足的綠色浴缸完美詮釋了業主對於獨特質感的喜好，以及對於細節的堅持，師傅手工打鑿的不規則原石背牆成為絕佳襯底，與透明浴缸相互對應，將材質的對比展現得淋漓盡致；客廁部分的藍色洗臉盆同樣引人注目，後方牆面則以不鏽鋼金屬和圓鏡，形塑幾何造型的有趣景致，彰顯匠心獨具的空間表情。

全案自然採光充足，設計師盡量保留窗邊留白，讓綠景光線在室內自由遊走，電視牆面的金屬特殊漆亦可些微映照室外景物，交織流轉的光影詩篇；人造光源的安排邏輯則著重情境氛圍的營造，讓一家人在這個墨色空間共享美好點滴，替生活注入幸福治癒的力量。採訪

陳映葵

3. 中島後方牆體及天花板的 L 型折面以稍帶黃的灰色特殊漆為主要呈現，跟冷灰走道產生趣味對比。4. 壁爐的弧形曲線及金屬特殊漆材質，讓火焰有著向上蔓延的錯覺，適度增添空間的暖度。

3. The light-yellow tone gray color L-shaped folded ceiling plane creates an interesting contrast with the cold gray tone corridor. 4. The curve lines and metallic paint finishes of the fireplace give an illusion of flame rising upward, moderately increasing the warmth of the space.



4



5



6



7

Everyone has their own preferences when it comes to the furnishings of their private residences. The owner of "Ink Odyssey" has a special fondness for dark-toned styles and is a gentleman who pursues exquisite tastes in life.

The design team noted that the owner is a businessman and spends most of his time in mainland China. In line of childhood memories and family geographical relationship, he chose the Kuling Street area as his home in Taiwan where he will be sharing it with elderly parents. In view of this, as a cross-generational fortress for family members, the overall planning needed to meet the individual daily needs of the residents and consider the unique soul of the space to create a uniquely beautiful home appearance.

An exquisite ink painting

The most noticeable limitation of the existing structure was the deep beam in the living room. The team ingeniously concealed most of the beams within cabinetry and clad the structure with mirrored finish stainless steel panels to lessen the visual oppression. The designer shared that although the stainless-steel is taciturn as a material alone, but it can also reflect the light and shadow of the surroundings which participates in enriching the space implications.

Considering the elderly parents, the planning pays great attention to meet the needs of barrier-free design, providing adequate circulation widths and no floor elevation changes in public space to ensure easy wheelchair access.

The project design theme was inspired by ink casting, aiming to present a deep and multi-layered tension like an ink painting. The designer further explained that the so-called "five colors of ink" in traditional Chinese painting refers to five different techniques of ink, using the ink shade changes of the pen to vividly express the hue of the object.

Under the harmonious blend of dark tones, the respective brilliance of the field is delicately superimposed through contextual expressions.

5. 中島的原石與上方的鏡面檯面創造了豪放與精巧的對話。利用石皮拼接 L 型量體必須針對紋理、重量做詳細考量。6. 基地的既存大樑貼附了不鏽鋼板，擷取材質的反射特性消弭視覺的壓迫感。7. 公私領域的分界置入了內玄關，盡可能維護居者隱私；所有房門也被隱藏於內玄關中，讓畫面更為俐落。8. 吊櫃展示著業主精心收藏的杯子們。窗邊盡量不做遮擋，讓採光和綠意最大化地進入室內。9. 木格柵也是全案的重要語彙，設計團隊擷取凹凸的陰影面使空間層次更為活躍。

5. The material composition details of the island counter. 6. The existing structural beam is clad with stainless steel panels to utilize the reflective characteristics of the material and levitate the visual oppression. 7. A designated inner vestibule between public and private areas preserves the privacy of the residents as much as possible. 8. Minimize shading or obstruction along the exterior windows allows the natural light and greenery to freely enter the space. 9. The wooden grille is also an important vocabulary throughout the project, as the design team extracted the shadowed elevations to enrich the spatial hierarchy.



8



9



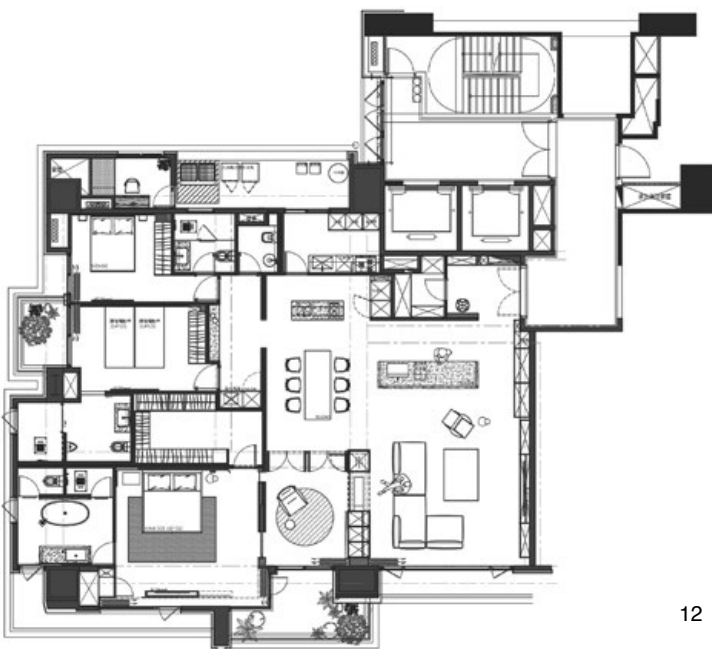
The in-between pattern to define the residential dimensions

The designer skillfully placed transitional areas between the public and private domains as separation. For example, before entering the master bedroom one needs to pass through a multi-functional space that doubles as a study and a private lounge, and an inner vestibule was planned to shield direct view into internal space, thereby creating a balance between openness and privacy.

Because the site has an excellent view of the green belt landscaping, the lush greenery is led into the interior through the window views as a finishing touch that enlightens the mood, so that the dark space is calm but not heavy. The interconnected but independent characteristics of the space ensure that the quality of life of the occupants considers the flexibility of emotional communication.

The rich collage of different materials is another feature of this project, including special lacquer, metal, three-dimensional bricks, rough stones and titanium plating, etc., and the tension between virtual and real is delicate and variable.

According to the designer, entering the living room through the vestibule, the first encounter with the dark stone island counter and the rough texture and finely polished mirror countertop brings a multi-sensory quality. The stained wood veneer highlights the rustic temperature. The grille is also an important piece of the spatial vocabulary, and the presentation of ink tone is not only limited to the color of the object, but also harmoniously integrates the shadow changes of the concave and convex surfaces to depict the rhythmic sense of depth and shade.



Eye-catching pieces create a stylish space

The green bathtub in the master bathroom perfectly interprets the owner's preference for uniqueness and insistence on details. The hand-crafted rough stone back wall becomes an excellent background for the transparent bathtub, displaying the material contrast to the fullest. The blue washbasin in the guest bathroom paired with geomantic shaped mirror is another eye-catching composition, creating an interesting unique spatial expression of ingenuity.

With generous natural light throughout the project, the designer intentionally kept the windows without shading so that the green scenery lighting can freely enter the space, and the special metallic paint on the TV wall can also lightly reflect the outdoor scenery to interweave the flowing light and shadow like poems. The interior lighting scheme focuses on the creation of a situational atmosphere, so that the family can share the beautiful moments in this ink-colored space and inject the power of happiness and healing into life.

建材分析 Material Analysis

1. 原始的石皮粗獷且厚實，在運用上需注意結構承載力、吊掛搬運以及施工工法的呈現。2. 異材質搭配是本作的一大亮點，雖統一為墨色調性，但也保有各材料本身的特性。3. 公共空間的燈光色溫盡量控制在 4200K 的自然白光；長輩房則使用較為溫暖的黃光。

1. The application of rough natural stone as an interior finish necessitated attention to the structural bearing capacity, transport, handling and consideration of construction methods. 2. Collage of different finish materials is one of the features of this work, although it is unified as an ink tone, it preserves the characteristics of each material. 3. The color temperature of the lights in the public space are controlled at 4200K natural white light, with the use of warm color light in the elderly parent's room.

10. 燈光計畫在滿足基礎照度外，也十分注重氛圍和情境的勾勒。11. 可作為書房和私人起居室的多功能空間。格柵折門可彈性因應各種場景的需求。12. 平面圖。13. 素雅又不失大器的主臥室。14.15. 主臥衛浴中搶眼的綠色透明浴缸象徵著業主對精緻品味的追尋；手工打鑿的原石牆面襯托浴缸的獨特性。16. 客廳的藍色面盆與幾何造型鏡櫃構成了有趣的景致。

10. In addition to provide illumination, the lighting design also pays great attention to depict and shape the atmosphere. 11. A multi-functional space that can be used as a study and private lounging space. The grille like folding door can flexibly adapt to the needs of various scenarios. 12. Floor plan. 13. The spacious and sophisticated master bedroom. 14.15. The striking green transparent bathtub in the master bathroom symbolizes the owner's quest for refined taste, while the hand-crafted stone wall accentuates the uniqueness of the bathtub. 16. View of the guest bathroom.

溝通重點 Communication Note

1. 本作需滿足跨年齡層居住者的日常需求，無障礙設計為必要。2. 以業主鍾情的深色調為發想，低調內斂卻不失層次。3. 室內格局採漸進式規劃，確保家庭成員各自的獨立性，也能兼顧互動交流。4. 業主有收藏杯子的興趣，需設置展示機能。

1. This project must fulfill the daily needs of multi-generational resident with the necessity of barrier-free design. 2. Inspired by the dark tones favored by the owner, low-key and introverted but carrying meaningful depth. 3. The interior layout is planned to ensure the independence of family members and consider of space for interactive communication. 4. The owner has intensive collection of cups that and needs to be displayed.

