

# Light Glory

## 光築新韻

設計者」何侯設計 / 何以立 侯貞夙

參與者」陳俐伶 鍾靜嘉

攝影者」廖慶光

空間性質」住宅

坐落位置」台灣

主要材料」米色萊姆石、義大利綠大理石、胡桃木皮、鍍鈦板、  
礦物塗料

面積」87 坪

Designers」Ho + Hou Studio Architects / Albert Ho, Jen-Suh Hou

Participant」Li-Ling Chen, Ching-Chia Chung

Photographer」C.K.L

Category」Residence

Location」Taiwan

Materials」Lime marble, Italian green marble, walnut wood, gilt titanium plate,  
mineral paint

Size」288m<sup>2</sup>



為空間置入光井，讓光線突顯出家居裡的質感紋理、收藏物件，構成純粹亦豐美的畫面。

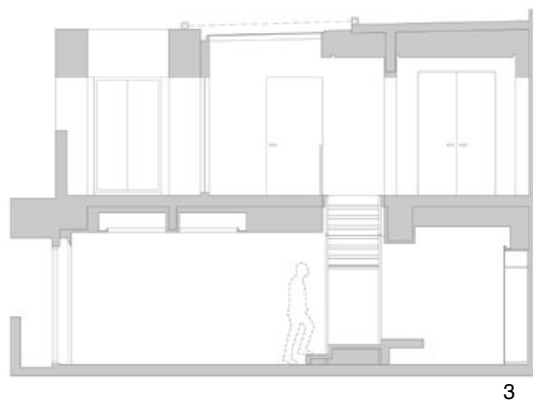
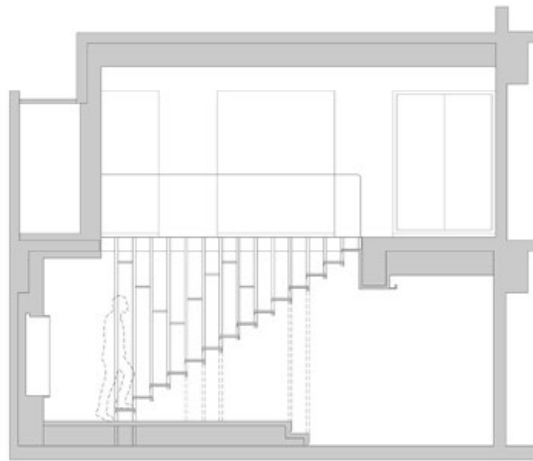
此作是樓中樓，社區在市郊半山腰，住宅位據頂樓兩層，視野能俯瞰台北故宮博物院，享有清新綠景與寧美環境，屋主鍾愛此地生活，期望將住宅重新改造，納入心愛收藏以及符合現階段的生活型態。

### 移梯再納光

設計師指出，此作主要討論議題是如何垂直連接上、下樓層，舊有樓中樓規劃的梯座位置衍生出許多零碎空間與冗長動線，因此如何讓兩個樓層動線更簡明、空間感更加開闊，擺脫以往格局編布的限制，是首要考量。

幾經討論後，最終方案決定重劃梯座位置，改寫兩個樓層的平面配置。把梯座自旁側移至公共廳區的中心，順勢界定出一樓的玄關範圍，兩個樓層也藉此獲得開闊連綿的完整平面，內部再將一樓作為公用廳區、廚區、次臥，二樓規劃健身房、露台、起居廳、主臥套房、次臥套房。

屋頂層的健身房上方增闢大天窗，梯座採用金屬骨架，為兩個樓層創造挑空空間，而外型輕盈的框構梯座，能助於天窗光線漫灑而下，有如為廳區增加一座採光井。此外，梯區底部也特意抬高，藉由平台整合踏階、端景陳設、穿鞋椅等功能，跳脫梯座傳統的單一用途，將其複合入屏風、端景、座椅、光井與垂直動線等功能。



## Albert Ho, Jen-Suh Hou



何侯設計 / 何以立 侯貞夙

何侯設計奉行以設計思維來主導建築設計、室內設計、景觀設計及家具設計的原則。主持人何以立及侯貞夙在美國波士頓及紐約分別取得美國建築師執照並累積了 15 年及 8 年的工作經驗後，在 1997 年於台北成立何侯設計。在近 20 年的執業中獲得許多認可及獎項。

何侯設計自認是業主夢想之督導者，在傾聽、評鑑、分析後提出解決方案；每一個方案均是整合功能及美學之結果。深信設計是生活的全部而非局部；設計是精密思維的表象而不是一種流行；設計的生命使於開始使用後而非完工時。

Ho + Hou Studio Architects / Albert Ho, Jen-Suh Hou

Ho + Hou studio Architects was founded by Albert Ho and Jen-Suh Hou; both are registered architects in USA and had accumulated 15 and 8 years working experience, respectively. They set up the team in 1997 and since then they have won numerous awards locally and internationally.

Ho + Hou studio Architects enjoys their relationship with clients. They love to listen and always arrive at the best solution, geared to both pragmatic feasibility and aesthetic excellence. They believe a good design is a precise process derived from observation and analysis leading to problem-solving. It is neither a fashion nor a desire quenching tactic.

1. 可透視的框構梯座定義為空間裡的一座屏風及採光井。2.3. 梯區剖面圖。  
1. The transparent framed staircase is defined as both a partition and a light well. 2.3. Section drawing of the staircase area.



4. 梯座複合了屏風、端景、座椅、光井等功能。5. 一樓平面圖。

4. The staircase integrates multiple functions such as a partition, a focal point, seating, and a light well. 5. First floor plan.



4

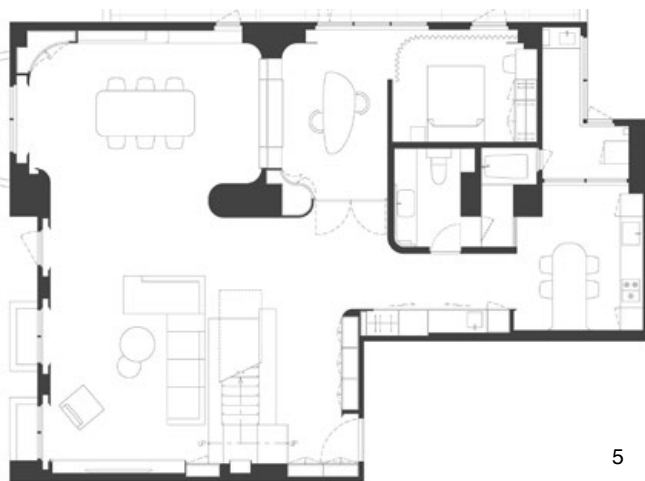
### 純粹亦豐美

受限於建築原有條件，一樓層高僅 230 至 260 公分，此作不作封頂包樑，選擇用天花板層次與照明設計的反差效果解放視覺壓力，並以通透視線與純化背景加重整體廣闊感受。

就細節觀之，設計團隊在操作上並非僅用淨白進行堆疊，而是在闊朗的空間裡善用材質質感差異、自身紋理特色，藉不同的場域、比例、色彩、濃淡變化，交織出純粹亦豐美的畫面。像是，使用法國萊姆石地板，或石灰石、米色礦物塗料作為空間的基本底色，讓連綿無縫的鋪面質感與略具差異的顯色效果，為空間架構簡單且大器的畫面，巧妙地在其中暗示著場域之別。

屋主擁有豐富收藏、喜愛華麗的紋理變化，此作除了以淨簡背景與屋主收藏相融合，也運用材料的對應與轉換，展開另一種敘事角度。全室在規劃時即預留展牆與展示平台，針對大型藏品設定陳設位置，空間局部再以綠色大理石、胡桃木皮面材和銅金元素進行對比配色，為家居增添精緻細節，同時呼應屋主的收藏特色。

全作從硬體到展演的縝密構劃，讓家居處處自成雅致構圖，留白不僅更給予藏品別致而獨特的細賞角度，無論華貴典雅或精巧細緻的工藝特色，都能在精心編排與簡約背景的相襯裡展現韻美，使屋主的收藏審美與家居生活自然交織，展現宅邸獨有氣韻。採訪」室內雜誌編輯部



5





8



9



10

6. 使用大理石、胡桃木皮與銅金元素進行對比配色，提升空間精緻感。7. 開闊動線與留白背景，給予屋主藏品更多的欣賞角度。8.9. 餐廳與次臥的書房運用折窗打破個室的封閉感。10. 利用天花板層次與照明效果儘可能拉高空間視感。11. 預留展牆與展示平台陳設收藏。

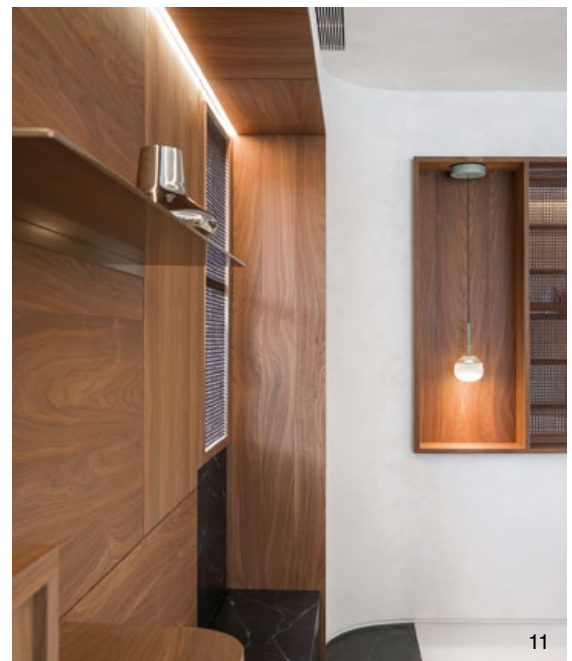
6. The use of marble, walnut veneer, and bronze elements create a contrasting color scheme that enhances the refinement of the space. 7. Open circulation and a minimalist background provide more viewing angles for the homeowner's collection. 8.9. The use of folding windows in the dining room and secondary bedroom study breaks the sense of enclosure in individual rooms. 10. Ceiling layers and lighting effects were used to visually elevate the space. 11. Reserved display walls and platforms for showcasing collections.

This residence is a duplex apartment, occupying the top two floors of a suburban hillside building. Its vantage point offers an exceptional view of the National Palace Museum in Taipei, with a refreshing green and serene landscape. The homeowners loved the living conditions here and hoped to renovate the residence to incorporate their art collections and align with their current lifestyle.

### Light in staircase light-well

The main challenge of this renovation was how to integrate the vertical circulation and unify the fragmented spaces. Simplifying the circulation between the two floors to create a more open space and effectively utilize the existing area was the primary design goal.

The final plan changed the original staircase location. The staircase was moved from the edge to the center of the public living area, naturally defining the foyer area on the first floor. This change also provided both floors with a spacious, continuous layout. The first floor is entirely dedicated to the living room, dining room, kitchen area, and a secondary bedroom; the second floor has a gym, a second living room, the master suite, and another secondary bedroom.



11



12

A large skylight was added above the gym at the roof level, and the staircase structure was made of a metal frame, creating a double-height space for the two floors. The light, airy staircase design allows the skylight's light to diffuse downwards, enhancing the light sources in the living area. The shoe changing area was incorporated with various amenities, beautifully presenting the view.

#### Beauty in a simple layout

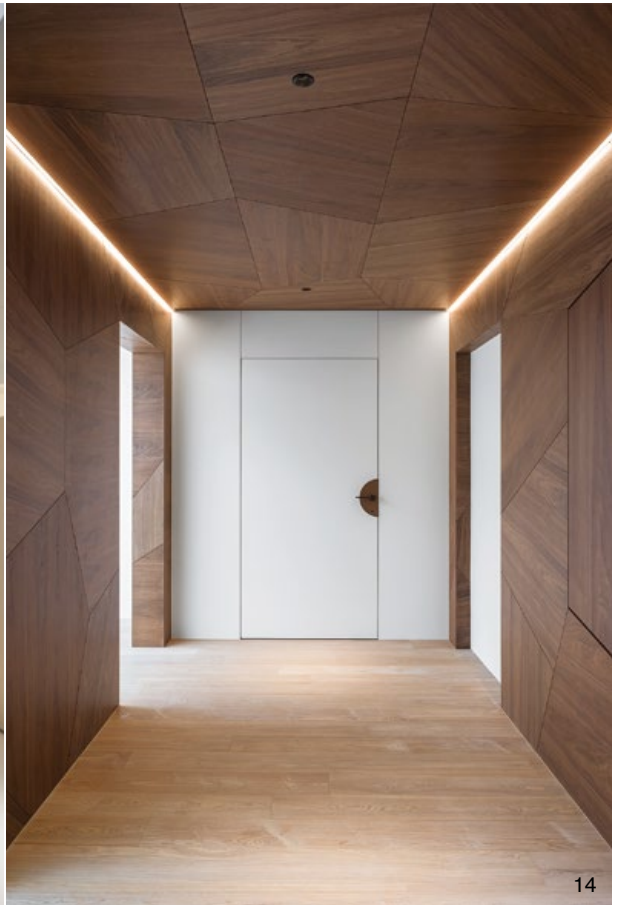
Due to the original structure of the building, the floor to ceiling height is only 230 to 260 cm. To enhance the sense of space, a shallow ceiling and contrasting lighting design were employed, along with transparent sightlines and simplified scenes to strengthen the sense of spaciousness. The designer skillfully utilized the differences in materials within the expansive space, such as textures, scale proportions, and color variations, weaving a scene that is both pure and richly beautiful. French limestone, lime plaster, and beige mineral paint serve as the basic colors of the space, creating a simple yet grand image with a seamless and slightly varied texture effect.

12. 將台灣蛇紋石融入空間運用之中，展現在地的文化元素。13. 框構梯座具有輕盈與透視效果，引導天窗採光灑入兩個樓層。14. 健身房採用胡桃木皮包裹，利用拼接角度突顯木質的紋理之美。15. 屋頂層增設天窗，讓自然採光能充分透入居室裡。

12. Incorporating Taiwanese serpentine stone into the design showcases local cultural elements. 13. The framed staircase features a light and transparent effect, guiding skylight illumination into both floors. 14. The gym is clad in walnut veneer, with the angled joints highlighting the beauty of the wood grain. 15. The addition of skylights on the roof level allows ample natural light to penetrate the living spaces.



13



14







16. 主臥房使用礦物塗料，用弧角收邊與間接光源加深整體溫潤質感。17. 主臥更衣室。18. 主臥衛浴，利用材料對比突顯精緻性。19. 主臥衛浴，沐浴區採用大理石鋪砌。20. 二樓平面圖。21. 孩房，床頭的屏牆介定出後方的更衣室。22. 孩房衛浴。  
16. The master bedroom has mineral paint, with rounded edges and indirect lighting to enhance the overall warm texture. 17. The master bedroom's walk-in closet. 18. The master bathroom's contrasting materials emphasizes its refinement. 19. The master bathroom's shower area is paved with marble. 20. Second floor plan. 21. In the children's room, a headboard wall defines the dressing area behind it. 22. The children's bathroom.

The homeowner has an extensive art collection, and thus a clean and simple background blends best with the owner's collections. The use of material transitions also created different spatial perceptions. Display walls and platforms were reserved in the space to host large collections. Parts of the space were wrapped in green marble, walnut veneer panels, and bronze elements, adding exquisite details to the home and echoing the characteristics of the owner's collections.

The design of this home is elegant in every aspect. The luxurious, elegant and meticulously crafted artistry is displayed in carefully arranged details. The homeowner's aesthetic values naturally intertwine with their home life, showcasing a unique charm.



20

### 建材分析 Material Analysis

1. 地坪：米色萊姆石、栓木木地板、義大利綠大理石、卡拉拉白大理石。
  2. 壁面：馬來漆、胡桃木皮、鍍鈦板、藤網、礦物塗料。
1. Floor: Beige limestone, ash wood flooring, Italian green marble, and Carrara white marble. 2. Wall: Venetian plaster, walnut veneer, titanium-coated panels, rattan webbing, and mineral paint.

### 溝通重點 Communication Note

1. 業主具有設計背景與收藏喜好，必須協調其多元興趣與空間設計方向，尋思最適宜的方案。
  2. 空間層高有限，透過天花板及照明效果擴伸空間感受，去除可能產生的窄迫感。
  3. 主要設計議題聚焦在如何垂直接連上、下樓層。思考的細節包括樓梯的位置，挑空空間的設置及尺寸和所需的屋頂露台面積。
  4. 室內樓梯的配置經過多輪的討論及修改，將其界定為一座屏風及採光井，具備垂直交通機能、提供採光效益。
1. The client has a passion for collecting, so this design had to harmonize their diverse interests with the spatial design direction to seek the most suitable solution. 2. With limited ceiling height, the design extends the sense of space through the ceiling and lighting effects to eliminate any potential feeling of narrowness. 3. The primary design issue focused on how to vertically connect the upper and lower floors. 4. The configuration of the indoor staircase went through multiple discussions, defining it as both a partition and a light well, providing vertical connectivity and enhancing the lighting benefits.



21



22