

Tranquility

以靜淬華

設計者」何侯設計 / 何以立 侯貞夙

參與者」鍾靜嘉 魏芝敏

攝影者」廖慶光

空間性質」住宅

坐落位置」台灣

主要材料」水芙蓉萊姆石、填縫洞石、景泰藍石、水磨石、進口磚、胡桃木、橡木皮、木地板、古銅鍍鈦鐵、特殊塗料

面積」92 坪

Designers」Ho + Hou Studio Architects / Albert Ho , Jen-Suh Hou

Participant」Ching-Chia Chung, Chih-Min Wei

Photographer」C.K.L

Category」Residence

Location」Taiwan

Materials」Limestone, cavity stone, cloisonne stone, terrazzo, tile, walnut wood, oak veneer, wood floor, gilt titanium, special paint

Size」304m²



1

以最少的材料呈現簡潔與層次，為空間營塑細膩溫雅與歷久彌新的質感。

簡單向來是複雜化約後的精華。極簡空間裡往往蘊藏不凡的統籌與縝密的思考，精準調控一切比例，細細鋪入完備機能。

這座位於高樓層的都會宅，出自何以立與侯貞夙設計師之手，以純熟筆觸建構舒朗且富有層次的空間。設計巧妙地融合豐富的材料與精緻的細節，闡述當代住宅的多變應用可能，展現出融合而不偏執於單一美學的態度。

簡潔且朗詒

設計師指出，這座住宅坐落在大廈的第30層，無鄰棟遮蔽且居高臨下，窗外即是台北市全景，整體設計以簡潔形貌為架構，將遼闊的市景引入家中。屋主品味洗鍊，講究質感，喜愛藝術與品酒，經常邀請親友小聚。因此，規劃需切合屋主特質，充分考量日常與宴客所需，把複雜機能俐落整合，是一項必要的任務。

住宅為L型空間，平面規劃分為兩部分。一是連接大門的長方區塊，作為共享空間；另一部分是較裡側的矩型區塊，定義為臥房區。共享空間著重於機能整合與舒朗大氣的視覺美學，使人在開放空間裡能充分感受時間、空間與環境景致。玄關衣帽間、儲藏室、廚房、工作區及傭人房集中在邊陲角落，客廳、餐廳、吧台與品酒區則開放相連，共同承納落地窗帶來的光影與遼闊視野。

設計師希望在空間中實現感性且靈活的配置，使共享空間能因時、因事體現人與人交流互動下的各種可能。考量日常使用人口簡單及預留宴客時的空間應用彈性，訂製餐椅與沙發椅背互依，為座區周邊預留寬闊動線。用餐區與沙發區的家具體塊看似合一，實則可視需求挪移調配位置，或根據使用人數進行重組，應變宴客席位安排。與此同時，置入一座長吧台界定品酒角落，吧台可作為茶水、輕食之用，亦拉開品酒區與沙發區、



Albert Ho , Jen-Suh Hou



何侯設計 / 何以立 侯貞夙

何侯設計奉行以設計思維來主導建築設計、室內設計、景觀設計及家具設計的原則。主持人何以立及侯貞夙在美國波士頓及紐約分別取得美國建築師執照並累積了15年及8年的工作經驗後，在1997年於台北成立何侯設計。在近20年的執業中獲得許多認可及獎項。

何侯設計自認是業主夢想之督導者，在傾聽、評鑑、分析後提出解決方案；每一個方案均是整合功能及美學之結果。深信設計是生活的全部而非局部；設計是精密思維的表象而不是一種流行；設計的生命始於開始使用後而非完工時。

Ho + Hou Studio Architects / Albert Ho, Jen-Suh Hou

Ho + Hou Studio Architects approach to architecture, interior design, landscape design, and furniture design is rooted in design thinking principles. Founded in Taipei in 1997 by Albert Ho and Zen-Su Ho both of whom are licensed architects in the United States with 15 and 8 years of experience in Boston and New York, respectively, Ho + Hou Studio Architects has gained recognition and awards over nearly two decades of practice.

Ho + Hou Studio Architects sees itself as the overseer of clients' dreams, providing solutions through listening, evaluation, and analysis. Each solution integrates functionality and aesthetics, embodying the belief that design encompasses all aspects of life rather than being a segment of it.

1. 長吧台可作為茶水、輕食之用，它為開放廳區建立了場域層次。2. 玄關區一隅規劃獨立衣帽間、洗手檯與客廁。

1. The long bar can be used for tea and light snacks, establishing spatial layers in the open living area. 2. The entrance area includes an independent cloakroom, washbasin, and guest toilet.



3. 訂製餐椅與沙發椅背互依，能視座席需求挪移調配。4. 選用同一色系的萊姆石及礦物塗料作為主要的地、壁用材，營造素雅且寧靜的感受。
3. Custom dining chairs and sofa backs interlock, allowing flexible arrangement according to seating needs. 4. Limestone and mineral paint in the same color scheme are used as the main floor and wall materials.



3

餐廳之間的距離，像是一座半高的屏障，在開放廳區裡劃出相對隱私的舒適角落。

臥房區包括主臥套房與兩間女孩房。主臥套房採三進式規劃，先以一座起居廳銜接入口，動線再分流至更衣廊與睡寢區，兩路徑各自通往末端的衛浴空間，形成迴轉式動線。這樣的設計不僅使用更為高效，各司其職的編排也確保物有所歸，維持整體的明淨感。兩間女兒房相連，臥房之間以滑軌門片區隔，既方便兩個女孩交流談心，也照顧彼此的隱私需求。

化約至純粹

整體設計以最少的材料呈現簡潔、質感與層次，選用同一色系的萊姆石和礦物塗料作為主要的地面、立面材料，奠定素雅底色，營造寧靜感受。這些自然而低調的材料，具有細膩溫雅與歷久彌新的質感，對照窗外光陰似箭的多變，隱隱表達恆定與變動的相互映照，令朗豁的空間透現出時間流動下、一切盡在歲月裡靜靜沉澱之美。

空間除了以米色石材及塗料作為設計底材，創造靜謐、永恆之感，局部立面也配以深色胡桃木或巴西景泰藍石進行對比，增添視覺層次，或用銅金作為硬體設備的構件來勾勒細節。這些選材不僅質精美觀，亦具功能用意。客廳主牆採用胡桃木作為立體飾帶，可作為電視主牆面的延續，俐落歸整了連續性的橫長立面，也具備櫃牆的取手功能，修飾內含的收納機能。主臥浴室使用景泰藍石作為隔牆鋪面，將東方彩墨裡的瀟灑寫意與生動氣韻鑄入空間，讓人意識到眼前的寧靜畫面中內蘊對大千世界的懷想。散布於全作的古銅鍍鈦鐵細節更是功能與美學的融合，在廳區整合掛畫軌道與畫勾設施，也在私空間給予燈具、滑軌、門框、梳化台、面盆區一致性的精緻質地，為視覺與觸感帶來極佳享受。全作設計洋溢著和諧與雅致，既是對自然的讚美，也是對生活藝術的詮釋。採訪 | 室內雜誌編輯部



4

Simplicity is design essence distilled from complexity. Minimalist spaces often contain extraordinary coordination and meticulous thought, with precise control of all proportions and incorporation of complete functionality.

This high-floor urban apartment, crafted by Ho + Hou Studio Architects, constructs a clear and layered space. The design skillfully integrates a rich variety of materials and refined details, demonstrating the versatile applications of contemporary residential space.

Simple and Expansive

The designer pointed out that this residence is located on the 30th floor of the building, with no neighboring structures obstructing the view. The owner has refined tastes, values quality, loves art and wine, and often invites friends and family for gatherings. Therefore, the design needed to reflect the owner's characteristics. Fully considering both daily life and entertaining needs, and efficiently integrating complex functions was essential.





5. 以弧線修飾橫樑、劃定場域，同時鋪陳間接光源，讓光照溫柔地漫入空間。6. 長吧台像是一座半高的屏障，在開放廳區裡劃出一座相對具有隱私感的品酒空間。7. 公私領域之間以格柵門分界，確保臥房區的隱私。8. 平面圖。

5. Curved lines soften the beams and define areas while providing indirect lighting. 6. The long bar acts as a semi-high barrier, creating a relatively private wine-tasting area within the open living space. 7. A grille door separates the public and private areas. 8. Floor Plan.

The L-shaped floor plan of the residence is divided into two parts. One is the rectangular area connected to the main entrance, serving as the public space; the other is the inner rectangular area, defined as the bedroom zone. The public space focuses on functional integration and a clear, spacious visual aesthetic, allowing one to fully appreciate the surrounding scenery in the open area. The walk-in closet, storage room, kitchen, workspace, and maid's room are concentrated in the peripheral corner, while the living room, dining room, bar, and wine tasting area are openly connected, receiving light and expansive views from the large floor-to-ceiling windows. The designer aimed to achieve a sensible and flexible layout within the space, allowing the shared areas to reflect various possibilities of human



8



9. 主臥套房前段規劃起居廳，再增設滑門加密睡眠區隱私。10. 起居廳除了是閱讀空間，也具備影音室功能。11. 主臥房萊姆石地坪與大理石長檯延伸至裡部的浴室，使用景泰藍石作為隔牆鋪面。

9. The front part of the master suite includes a living room, with a sliding door added to enhance the privacy of the sleeping area. 10. The living room serves as both a reading space and an audio-video room. 11. The master bedroom's limestone flooring and long marble counter extend into the bathroom, where blue stone is used for the partition walls.

interaction. Considering the simple daily usage and the need for flexible space utilization when hosting guests, custom dining chairs and sofa backs were designed to interlock, leaving ample room around the seating areas for movement. The furniture in the dining and sofa areas appears unified but can be rearranged as needed, or reconfigured based on the number of users, adapting to seating arrangements for gatherings. Additionally, a long bar was installed to define the wine-tasting corner, which can also be used for serving tea and light snacks.

The bedroom area includes the master suite and two girls' rooms. The master suite is designed with a three-section layout, starting with a living room that connects to the entrance. The flow then diverges into a dressing corridor and a sleeping area, each leading to a bathroom at the end, forming a circular route. This design not only enhances efficiency but also ensures everything has its place, maintaining a clean and organized overall look. The two girls' rooms are connected, separated by sliding doors, which provide convenience for the girls to interact while also catering to their privacy needs.

The Purity of Reduction

The overall design uses minimal materials to present simplicity, texture, and layers. Limestone and mineral paint in the same color scheme are chosen as the main floor and wall materials, establishing a subtle and elegant base tone that creates a sense of tranquility. These natural materials, with their delicate and enduring qualities, contrast with the ever-changing scenery outside, subtly expressing the interplay between constancy and change. This dynamic yet serene space reflects the beauty of everything quietly settling over time.

建材分析 Material Analysis

1. 萊姆石及礦物塗料：運用在主要的地、壁，藉素雅的互補材料來營造空間的寧靜感。
 2. 深色胡桃木及巴西的景泰藍石：在素雅空間創造適度對比，增加視覺層次。
 3. 古銅鍍鈦鐵：整合掛畫軌道與畫勾設施，作為燈具、滑軌、門框、梳化台、面盆區的構件。
 4. 填縫洞石：用於餐桌的天然石材，桌腳整合電器插座功能。
1. Limestone and Mineral Paint: Utilized for the main floors and walls, these complementary materials create a tranquil atmosphere with their understated elegance. 2. Dark Walnut and Brazilian Blue Stone: These materials are used to introduce moderate contrast within the subtle space, adding visual layers and depth. 3. Bronze-Plated Iron: This material integrates picture hanging systems and hooks, and is also used for light fixtures, sliding tracks, door frames, vanity tables, and basin areas. 4. Cavity stone: This natural stone is used for the dining table, with integrated electrical outlet functions in the table legs.

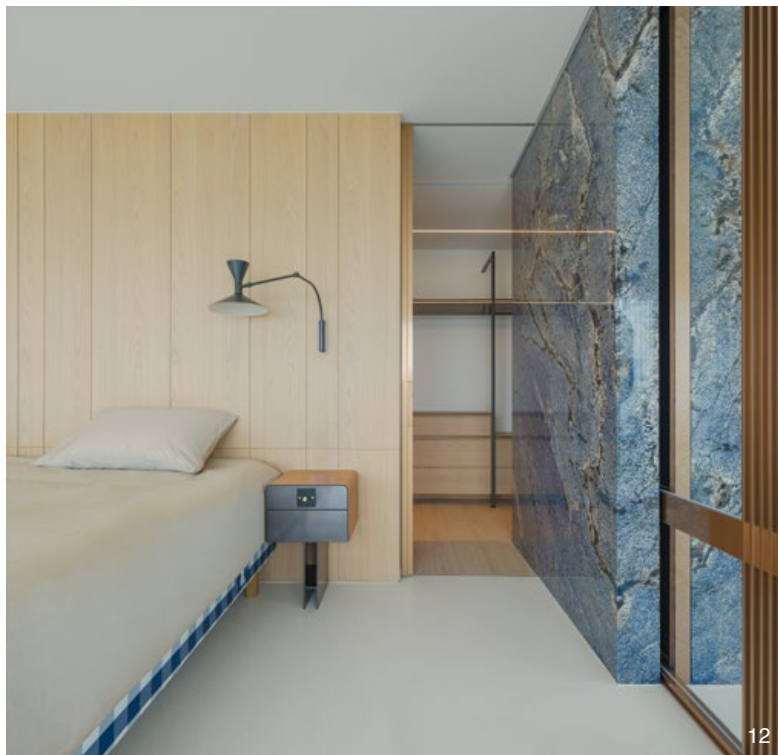
溝通重點 Communication Note

1. 重視空間舒朗開闊感受，以及採光、視野效果。
 2. 屋主喜愛藝術、品酒，需作展示與貯放規劃。
 3. 共享空間除了需滿足日常生活細節，也要預想宴客時的場布規劃彈性。
 4. 臥房講究面面俱到的精緻質地，每間臥室都採取套房規劃，配有獨立衛浴空間。
1. Emphasis on Spaciousness and Open Feel. 2. Art and Wine Appreciation: The owner's love for art and wine requires thoughtful planning for display and storage. 3. Flexible Shared Spaces: The shared spaces must cater to daily living details while also providing flexibility for gatherings. 4. Refined Bedrooms: Each bedroom is designed with meticulous attention to details.



12. 睡寢區主牆劃出後方的更衣區，順勢為房內建立回字型動線。13.14. 古銅鍍鈦鐵作為櫃框、梳化台、面盆區一致性的精緻描邊。15. 比鄰的兩間女兒房以滑軌門片作彈性區隔。16. 女兒房衛浴，每一細節均細究簡潔美以及高質感。17. 女兒房將設備控板整合至床頭造型。18. 女兒房衛浴採用霧玻璃立面維繫採光。

12. The main wall of the sleeping area defines the dressing area behind it, establishing a circular route within the room. 13.14. Bronze-plated iron provides a consistent, exquisite texture for cabinet frames, vanity tables, and basin areas. 15. The adjacent daughters' rooms are flexibly separated by sliding doors. 16. Every detail of the daughters' bathroom emphasizes simplicity and high quality. 17. The daughters' room integrates the equipment control panel into the headboard design. 18. Frosted glass walls in the daughters' bathroom maintains natural light.





15



16



17



18

In addition to using beige stone and paint as the design foundation to create a sense of serenity and timelessness, parts of the walls are contrasted with dark walnut or Brazilian blue stone to add visual layers. The main wall in the living room uses walnut as a decorative strip, serving as a continuation of the TV wall, neatly organizing the continuous horizontal surface while also functioning as cabinet handles, enhancing the storage features within. The master bathroom uses bluestone for the partition walls, casting the freehand and vivid charm of Eastern ink painting into the space. Scattered throughout the design are bronzed-plated iron details, merging function and aesthetics, integrating picture hanging systems in the living area, and providing consistent, exquisite textures for lighting, sliding tracks, door frames, vanity tables, and basin areas in the private spaces, offering excellent visual and tactile enjoyment.