

Through Courtyard / Cascading Light

穿庭沐光

設計者」 創研空間設計有限公司 / 何俊宏

參與者」 李翎 李秉霖

景觀設計」 木荷景觀工程有限公司

攝影者」 李國民

空間性質」 住宅

坐落位置」 台灣

主要材料」 天然石材、實木海島型木地板、水染木皮、礦物塗料、磁磚、
玻璃、金屬、人造皮革、壁布

面積」 室內 120 坪、室外 35 坪

Designers」 CREATE + THINK DESIGN STUDIO / Arthur Ho

Participant」 Lee Ring, Lee Bing Lin

Landscape Design」 MUHE Landscape Design and Construction

Photographer」 Koumin Lee

Category」 Residence

Location」 Taiwan

Materials」 Natural stone, solid wood flooring, mineral paint, fenix board, iron, glazed ceramic tile, glass, wood veneer, metal, manmade leather, fabric wallpaper

Size」 Indoor area 396.7m²、Outdoor area 115.7m²



Arthur Ho



創研空間設計有限公司 / 何俊宏
紐約 Pratt Institute 室內設計碩士、丹麥 DIS 建築及設計課程研究、紐約 Gene Kaufman Architect P.C. 設計師、香港商穆氏設計規劃有限公司設計師，2005 年於台北成立創研空間設計。

創 = 開創力 / 創造力，研 = 研究力 / 思考力；創 + 研，為理性與感性的結合，左腦與右腦的並用，有生活的實用，有心靈的感觸，用心思考、熱情創造，希望用設計團隊對空間的看法與詮釋，提供給客戶不同的空間體驗與感受。從潛藏於基地與人物的時空背景理出脈絡，去詮釋、表述設計的獨特與專屬。不僅是美學感官的外顯訴求，更強調符合本質文化的內在精神，蘊含著對於當下生活浪潮的反思。重要得獎紀錄如德國國家設計獎、iF Award、紅點設計獎、義大利 A'Design Award、香港 APIDA 大獎、日本 Good Design Award、台灣 TID Award 等。

CREATE + THINK DESIGN STUDIO / Arthur Ho
M.A. in Interior Design, Pratt Institute, New York
DIS Architecture and Design Course Research, Denmark
Designer of Gene Kaufman Architect P.C., New York
Designer of M Moser Associates, Ltd., Hong Kong
2005 Founded CREATE + THINK DESIGN STUDIO, Taiwan
Creativity, exploration, critical thinking, the combination of rationality and sensibility, the practicality of life, the sensation of the soul, the enthusiasm to create, to interpret and express the uniqueness and exclusivity of design hope to provide clients with different space experiences and feelings. It is not only the explicit appeal of the aesthetic sense, but also emphasizes the inner spirit to align with essential values to contain the reflection on the current wave of life.
Important awards received include the German National Design Award, iF Award, Red Dot Design Award, A'Design Award in Italy, APIDA Award in Hong Kong, Good Design Award in Japan, TID Award in Taiwan, etc.

生活型態的改變，造就了空間的全新樣貌。

放大光線及視線的優勢，再藉由圓弧語彙、連續量體的手法，形塑室內敞亮氣息。

仁愛大道因其寬敞的道路、蔥鬱的林蔭與各式季節花草，替城市增添了一抹寫意浪漫的氣息，再加上四通八達的交通網、便捷的生活機能，成為台北市的宜居地段。《穿庭沐光》一案屋齡雖已近四十年，但其獨特的建築型態仍十分具有識別度，何俊宏設計師表示，本作位於大樓頂層（17 樓），上方退縮兩層建物（18 及 19 樓），弧形落地窗正對仁愛路，建物外的露台是一片偌大的空中花園；業主是一對年紀稍長的夫妻，子女相繼成家後讓空間的使用需求有了極大改變，為了因應新的生活模式而委請創研空間重新擘劃住宅面貌。

設計的介入消弭限制

由於長住人口僅剩業主夫妻，平面布局和動線規劃主要服務兩人，17 樓依循建築的原有形式去做分割，藉此劃分出開放的公共區域以及私密的主臥空間。何俊宏進一步解釋，基地所在地因過往的航高限制，導致建物樓高普遍偏低矮，令人感覺較為壓迫封閉，如何運用設計手法破解侷限，盡可能爭取充足的高度，成為團隊面臨的首要課題。有鑑於此，公區的整體設計主軸以不規則的弧形天花來定義場域，利用樑位的錯開釋放天花板高度；另一方面，考慮到天花板上隱藏了全熱交換器、空調、空氣清淨機等諸多設備及管線，弧形的高低錯落不僅滿足了住宅的實用性，同時提升視覺層次，讓結構的限制轉化為空間特色。

此外，大面積的木皮壁櫃更是全作舉足輕重的存在，它創造了空間的延續性，成為平面中最關鍵的存在，串連起不同的機能場域，也讓公私領域有了對話的可能。柔和流動的曲線無形之間指引了日常動線，光源的投射提點出木材的和煦韻致，讓立面表情更為靈動。

1. 基地屋齡已數十年，設計師調整平面格局，釋放光線及視線的流動，使其成為愜意自在的居所。

1. The designer organized the plan layout to release the flow of light and sight to form a delightful and comfortable residence.



2. 17 樓的公區採開放手法擊劃，並利用金屬灰色玻璃拉門界定內外。3. 17 樓平面圖。

2. The open plan public area on the 17th floor is defined by sliding doors in metallic grey glass. 3. 17th Floor Plan.



2

從細節整合空間全貌

不論從哪個面向來綜覽室內，明亮開敞的氣息滿布其中，設計師說道，業主鍾情溫潤、簡潔俐落的風格，他遂嘗試以「留白」的方式形塑整體架構，藉由素淨筆觸替空間打底，讓充沛的採光和豐富的光影流轉生動敘事；全作材料選擇單純，為追求「同中求異、異中求同」的和諧境界，多以木材、石材構築畫面，但卻巧妙地於細節處展現差異，並無形帶出分區概念。舉例而言，開放的公共區鋪陳了木紋淡雅柔和的白橡木以及米色系萊姆石，在自然光的照拂下具光澤又溫暖；走入主人的私享天地，則透過質地強韌且色澤飽滿的柚木和中性的灰色皮革，營塑沉穩恬靜的氣息，讓身心靈可以在此得到充分的修復。

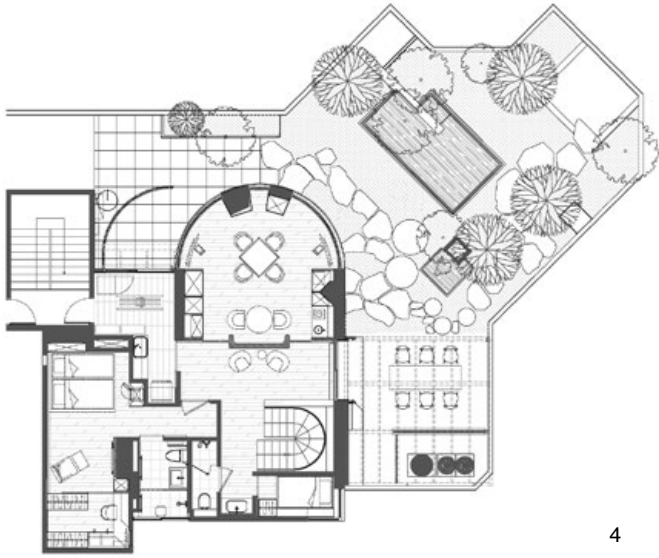
何俊宏表示，主臥室的廊道提供順暢的動線，串起生活起居的必要機能，男主人更衣室利用拉門形式滿足彈性開闔，女主人更衣室配有獨立的出入口，另一側則與淋浴間相鄰，並藉電控玻璃兼顧光線和隱私的平衡。睡眠區的位置更是貫穿了建築南北向，透過兩檯相對的窗扇，北眺陽明山，南望仁愛林蔭大道，將城市景致盡收眼底。

重設階梯 串接多樓層

垂直動線的銜接亦是設計團隊著墨的環節之一，白灰石材牆面延續了三層樓，化為全室背景，與石牆結構組合的弧形鋼梯視感輕盈，木質踏面宛如從石材面凸出，搭配人造光源更突顯了階梯的立體度，旋轉造型使整個量體輕盈又不失律動性，而頂部特意開了一扇天窗，天光漫射入內，替住宅注入了一抹自由透亮的氛圍。



3



4

18樓作為休閒娛樂空間，擁有廣闊的空中露台，透過動線的調整，在樓梯側平台新設了開口，讓室內休閒區和露台有了更通暢的鏈結，以此縮減了居住者、空間和環境的離距，站在戶外回望建築，就像是一棟漂浮在都市花園中的白色別墅。

19樓是男主人的收藏區，設有音響室和專門存放茶葉、字畫的空間，設計師提醒，音響設備的規劃需格外注意走線、維修等細節，以期獲得良好的感官饗宴。

全案的設計概念奠基於生活形式的改變，講究光線、空氣和光線的流動，再佐以窗外景致及盎然綠意，讓居家時光成為獨特迷人的旅程，沉浸於每個美好片刻。採訪「陳映葵

4. 18樓平面圖。5. 全案風格留白、簡約，大量引進自然採光，讓居家環境透亮開闊。6. 木皮壁櫃由廚房一路延伸至私領域，打造室內的核心理面，光源的運用亦隱約指引了動線方向。7. 廚房。調性及材料的選擇與公共空間相近。8. 採光充沛，故利用開口、灰玻等語彙最大程度地放大優勢。

4. 18th Floor Plan. 5. The overall design language of the project expresses the intentional reserved and simple quality. 6. The custom wood veneer wall cabinet extends from the kitchen all the way to the private area, creating the core feature of the interior. 7. Kitchen consist of a similar tonality and finish materials of the public spaces. 8. Abundant of natural lighting is the best feature of the space.



5



6



7



8

建材分析 Material Analysis

1. 大量運用木頭、石材進行打底，再透過局部的材質差異做出場域分界。2. 私領域選用染白柚木，在沉穩中保有一絲輕盈。3. 階梯利用鋼構、木踏板與石材牆面共創輕巧量體。

1. Using generous amount of wood and stone as the overall finish scheme, then apply delicate detailing or material change to distinguish the functional differences. 2. The private domain consist of dyed white teak, which retains a trace of lightness in calmness. 3. The stair is constructed with steel structure and wood treads with a stone back wall contrast to create a lightweight volume.

溝通重點 Communication Note

1. 屋齡已近 40 年，如何破解屋況的諸多限制，成為設計團隊首要的挑戰。2. 居住成員十分單純，空間布局皆依夫妻二人習慣做擊劃。3. 將留白、簡潔、俐落作為關鍵字，賦予住宅通透開闊的表情。4. 注重光線的流動，結構間的開口設計有助於引光入室。5. 多樓層基地需特別注意空間的整合以及整體協調性。

1. How to overcome the existing conditions became the primary challenge of the design team. 2. The number of residents is very simple, and the spatial layout is tailored to the couple's daily life. 3. Void, concise, and neat are the key words that give the house a clear and open appearance. 4. Consideration to the flow of natural light, and the openings between the structures allowing light to penetrate the space. 5. Pay special attention to the integration of space and overall coordination for the multi-storey project.



Renai Boulevard is famous for lush trees and various seasonal flowers along the road, adding a touch of romantic atmosphere to the city. Coupled with the extensive transportation network and convenient living functions it is considered a most livable location. Although the building is nearly 40 years old, its unique architectural form is still very recognizable. The project is located on the top floor of the building (17th floor) and includes a two-story (18th and 19th floors) penthouse above, and the terrace is a huge sky garden. The owners are an older couple, and their space needs have changed greatly after their children formed their own families, so they commissioned the design team to redesign the dwelling to acclimate to the new lifestyle.

The intervention of the design removes the limitations

Because the couple are the long-term residents for the project, the circulation and plan layout were focused on serving two people. The 17th floor is allocated to an open public area and the private master bedroom space. Ho further explained that due to the previous building height restrictions, the older structure generally has a low floor to floor height, which made people feel oppressed and closed. Therefore, techniques to break the limitations and strive for sufficient height became the primary focus of the team. The design theme of the public area uses an irregular curved ceiling to define place and reclaim the void space between beam positions. Intensive utility equipment and pipelines required installation above the ceiling, so the staggered height of the curved plane not only satisfies the practicality of functional needs but also enhances the visual appearance transforming constraints of the existing structure into spatial features.





12



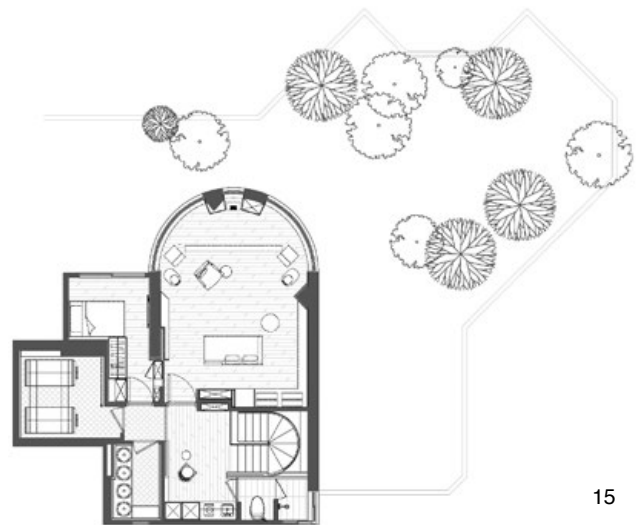
13



14

9. 私領域的木皮壁櫃串起生活起居需要的所有機能。10.11. 客房。賦予業主共享天倫之樂的餘裕。12. 主臥室一隅。坐擁仁愛林蔭大道與陽明山等城市風光；灰色皮革的鋪設形塑沉穩氣息。13. 主臥衛浴和女主人更衣室之間的電控玻璃維繫了開放和隱私的彈性。14. 長形檯面結合化妝台跟洗手台功能。開窗設計讓光線能漫射進洗沐空間。15.19 樓平面圖。

9. The wood-veneer wall cabinetry in the private area connecting all the functions needed for daily life. 10.11. View of the guest bedroom. 12. A corner of the master bedroom. It has urban scenery and landscape views. 13. Electrically controlled privacy glass partition between the master bedroom bathroom and dressing room maintains the flexibility of openness and privacy. 14. The long countertop combines the functions as dressing table and a washbasin. The window allow light to diffuse into the bathing space. 15. 19th Floor Plan.



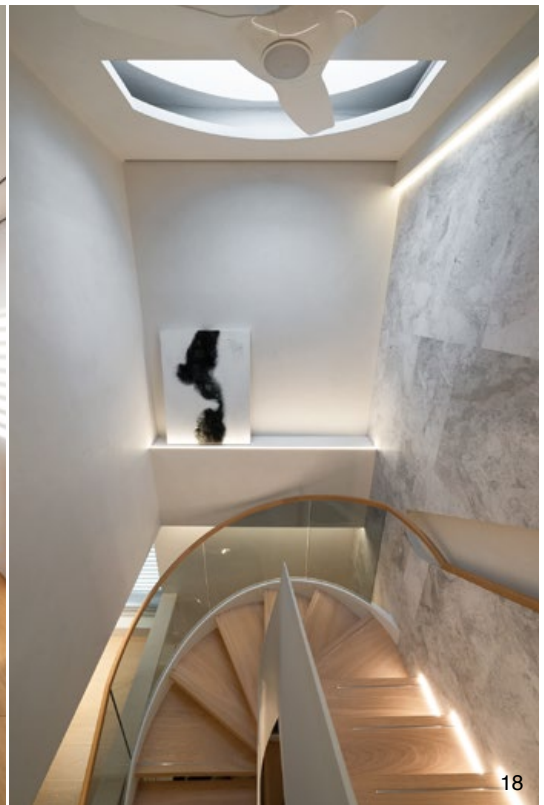
15



16



17



18

The large area of wood veneer wall cabinetry is a pivotal existence. It creates the continuity of space, linking different functional spaces, and makes it possible for the dialogue between the public and private domains. The soft, flowing curves invisibly guide daily movement, and the projection of the light source brings out the warm charm of the wood, making the elevations livelier.

Integrate the space from the details

The space is always filled with a bright and open atmosphere. The owner desire a warm, simple and neat style, therefore the design team tried to shape the overall theme in a "blank space" concept. Using plain background as foundation allowing the abundant light and shadow flow make vivid presence in space. The pursuit of a harmonious realm seeks delicate differences in detail. For example, the open public areas are shorn with soft white oak and beige color stone which shine pleasantly under natural light. Entering the owner's private world finished with the rich intense color of teak and neutral gray stone, the calm and tranquil atmosphere nurtures the body, mind and soul.



19

Designer Ho commented that the corridor leading to the master bedroom strings together the necessary functions of daily life and the male owner's dressing room has sliding doors for flexible opening and closing while the hostess' dressing room is furnished with a separate entrance, with the other side is directly connected to the shower room. The balance of light and privacy is modulated by electronically controlled glass. The sleeping area takes place along the north south direction of the building, and through the two opposite windows one can enjoy the Yangming Mountain View to the north and Renai Boulevard to the south, with a panoramic view of the city.

Reset the connector

The white gray stone wall extends through three floors, turning it into the background of the whole space, while the curved steel staircase combines with the stone wall structure with a light appearance. The wooden treads seem to be suspended from the stone wall, and the light fixture highlights a three-dimensional sculptural presence. The spiral shape makes the whole volume light and rhythmic, with the deliberately placed skylight allowing diffuse sunlight in, introducing a translucent atmosphere into the residence. The 18th floor is designated for leisure and entertainment spaces, a new opening was set on the staircase side platform, so that the indoors and the vast sky terrace have a smoother connection. Standing outside and looking back at the building, it is like a white villa floating in an urban garden, connecting the residents, the space and the environment. The 19th floor is reserved for the owner collections, space dedicated to storing tea, calligraphy and paintings, and a professional sound room for stereo equipment.

The design concept of the project originated with a change of lifestyle, focusing on the flow of light and air. Together with the abundant greenery outside the windows, making the time at home is a unique and fascinating journey, immersed in every beautiful moment.



20

16. 階梯作為串接樓層的垂直動線，設計師將其挪移至平面後側，使人的心境得以產生沉澱轉換再進行分流。17. 光影的流轉成為全作最生動的背景，也模糊了內外的界線。18. 光線從頂部天窗灑落，強化室內的律動。19.18 樓的休閒娛樂空間。20. 盎然的空中露台成為業主的私享綠洲。21.19 樓男主人專屬的音響室。

16. The vertical circulation staircase is relocated to the back of the plane, allowing more transition space for mood precipitated and transformed. 17. The flow of light and shadow has become the most vivid background of the project, and blurs the boundary between inside and outside. 18. Natural light penetrates through the skylight, intensifying the rhythm of the room. 19. The entertainment space on the 18th floor. 20. The spacious terrace becomes an oasis of privacy for the owners. 21. The owner's exclusive sound room on 19th floor.



21