

Form and Function Reunited

奢域

設計者」沈志忠聯合設計 / 沈志忠

攝影者」狐色影像工作室 / 徐詠倫

空間性質」住宅

坐落位置」台灣

主要材料」石材、帝通石、磁磚、實木皮、美耐板、鍍鈦金屬、
海島型木地板、特殊漆、皮革

面積」79坪

Designers」X-Line Design / Chih-Chung Shen

Photographer」Hu-Se Image Studio / Yung-Lun Hsu

Category」Residence

Location」Taiwan

Materials」Stone, ceramic tile, wood veneer, plastic laminate, titanium plated
steel, wood flooring, special paint, leather

Size」261.2m²



設計議題由基地限制出發，以縝密思維擘劃平面格局，讓結構的桎梏成為空間特色，再透過樸實優雅的筆觸，替這幅博大畫卷揮灑出溫柔和諧的靈魂。

作為凝聚三代親情的家庭宅，《奢域》一案在大器內斂的空間架構下，滿盈精緻的細節，襯托家人之間的情感交流。

負責操刀室內規劃的沈志忠設計師提到，基地坐落於高樓層且室內坪數寬敞，享有遼闊的城市天際線，窗外的壯麗景致成為日常時光最靈動的背景。有鑑於全作格局由多戶打通，如何在既有的樑柱結構限制下提出完整的平面配置，且不會因隔牆的區劃導致空間被細碎切分，是設計團隊首要思索的切入點；另一方面，業主期待突顯室內的朗闊感受，展現住宅的俐落風格，同時保有一絲奢華雅韻。

1. 沈志忠設計師透過簡潔又不失暖意的筆觸，替這座承載一家四口日常起居的住宅描繪出開闊敞朗的表情。
 2. 兩扇長向窗景引入壯闊的城市景色，室內則藉由量體安排，無形創造出場域區隔。
1. Designer Shen depicted an open and open expression for this home that carries the daily life of a family of four through simple and warm brushstrokes. 2. Large windows present the splendid view of the city, and the interior is organized by different volumes, forming space separation invisibly.



Chih-Chung Shen



沈志忠聯合設計 / 沈志忠

沈志忠 1998 年畢業於倫敦藝術大學雀爾臺學院，返台後陸續創辦建構線設計有限公司與沈志忠聯合設計有限公司，並擔任負責人與設計總監職務。其設計理念是透過建構的「線性張力」探索空間本質，挖掘空間與空間相互的恆定關係。執業以降，國內外獲獎無數，歷年來囊括涵蓋亞洲及歐美等指標性設計金獎獎項，如 2019 年英國 London Design Award、2019 年加拿大 Best of Canada Design Award、2016 年義大利 A' Design Award、2008、2011、2012、2014 台灣 TID Award 四屆金獎等，更於 2017 年受邀成為義大利知名設計大獎 A' Design Award 的評審委員，同時受邀出席兩岸演講邀請，不勝枚舉。

X-Line Design / Chih-Chung Shen

Chih-Chung Shen graduated from University of the Arts London in 1998. After returning to Taiwan, he founded X-Line Design Co., Ltd. in 2005, then set up Chih Chung Shen Union Design Co., Ltd in 2013, and serves as both director and design director. The firm's design concept is to explore the essence of space through a constructed "linear tension." This allows the study of the flowing relationship between spaces as well as the constant relationship between human perceptions and space. The practice has received numerous awards, including 2019 London Design Award, 2019 The Best of Canada Design Award, 2016 A' Design Award, TID gold awards in year 2008, 2011, 2012, and 2014, etc. In 2017, Chih-Chung Shen served as a jury member of the Italian A' Design Award & Competition. At the same time, he was invited to participate in cross-strait speeches.



3. 懸浮的鍍鈦櫃體成為入內後的視線焦點，作為動線的節點，它鏈結起過道和公共空間；漂浮的型態也形塑了隔而不絕的視覺效果。

轉譯限制 成為特色

對此，沈志忠透過嚴謹又細膩的設計思維做出回應。家中成員由長輩、夫妻二人、女兒與他們飼養的貓咪所組成，多戶型空間整併後，僅保留一個主要出入口，使進出動線單純化，並依據業主的生活需求，規劃成四房兩廳的格局，核心區塊留予公共區域作為家人主要的活動場域，尺度開闊的過道不僅鏈結起公私領域，亦肩負著轉換心境的過渡地帶角色，巧妙地營造出一個寬敞又充滿活力的家園。此外，居住者涵蓋了不同的年齡層，考量長輩的信仰習慣，設計團隊將孝親房與佛堂緊鄰安排，以滿足她敬拜神明的心靈寄託，無高低落差的地坪貫穿了整個住宅，而較為粗糙的質地則創造了止滑效果，全方位確保高齡居者的生活安全。

沈志忠進一步分享，在他眼中，空間如同一幅博大的畫卷，每一筆一畫都深刻描摹出家庭的和諧和溫馨氣息；而前述所提的建築結構限制則在他的靈活演繹下，轉而成為設計的主要特色之一，設計師秉持「機能藝術化」的原則，將無可避免的柱體和樑位轉化為空間的框景，透過材質的包覆、平面立面的轉折等手法，鋪陳出視線的前後景深，也於無形之間扮演



3

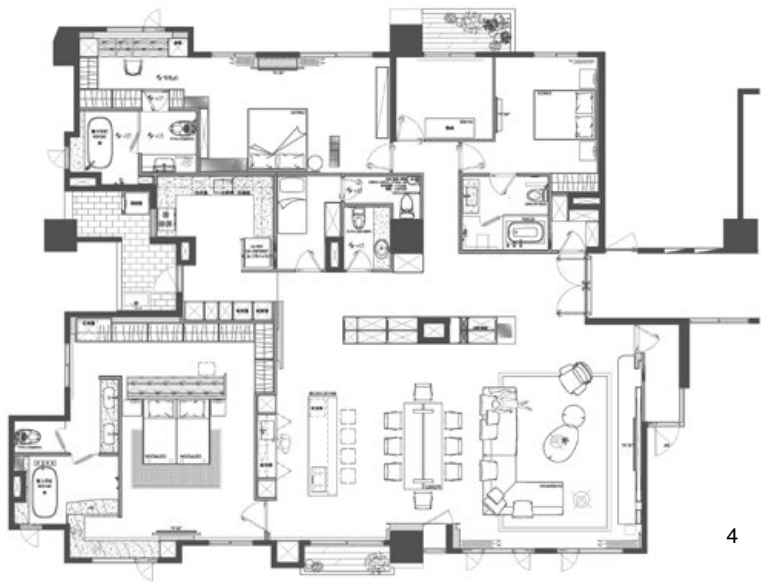
3. The suspended titanium-plated cabinet becomes the focus of sight. As a node of the circulation, it links the aisle and the public space. The floating form also creates a visual effect of isolation.

了室內的區隔。不過，設計師也提醒，強化結構的同時，亦需顧及畫面的延續性和協調，點線面的銜接必須順暢，以避免過於碎化的分割。

異材質共築住宅表情

除了基地侷限的重塑，本作亦積極探尋「量體」與「穿透」的對比互動。大門入內後，一座具份量感的鍍鈦櫃體映入眼簾，成為空間極為重要的主軸，設計師刻意賦予它不落地的懸浮型態，一方面增添了行走的躍動感，也在虛實之間維繫了穿透及隱私的平衡，熟稔拿捏場域界線的轉折，替室內形塑了適度的呼吸餘裕。

沈志忠說道，由於業主喜愛中性偏深色，並隱隱透出奢華細節的調性，他遂利用具溫潤肌理的木質，以及紋理自然精緻的石材作為空間打底，再透過有著朦朧反射特性的鍍鈦點出輕奢質感，磁磚的運用亦充滿設計團隊的巧思，藉由多變的拼貼手法進行加工，強化視覺的韻律性。而臥室則遵循居住者不同的生活需求提出了專屬的方案，旨在最大化地突顯每個人



的特質，主臥房簡約沉穩的韻味與夫妻兩人的個性相契合，盡可能減少繁複元素的呈現，打造安放身心的休憩境地；女兒房則以特殊漆搭配不鏽鋼語彙，揉合出一種既溫暖又冷冽的衝突美學，象徵她年輕時尚的個人魅力。

硬裝軟裝的和諧搭配

考慮室內有著豐富的水平、垂直交會，因此家具軟件的型態主要以「簡練」、「經典」為關鍵字，色彩上盡量貼近空間架構，營造協調畫面，深色餐桌被視為公區的節點，帶出明顯景深，皮革餐椅則與鍍鈦懸浮櫃體相互照映，透過異材質的刻劃挹注獨到品味。

由於基地自然採光條件優秀，設計師期望人造光源能夠扮演引領空間節奏的角色，藉此彰顯量體存在，

並捎來線性律動，特別裝設了 **Lutron** 調光系統，滿足居者對於各式情境的氛圍塑造，透過流明的自由調整，結合美學和實用性，完美體現業主心中對於理想家居的追尋。採訪 | 陳映葵

4. 平面圖。5. 無法更動的建築結構藉由包覆、立面轉折等手法，成為全作獨特的亮點。6. 餐廚空間是本案的核心，大尺度的餐桌被視為畫面頓點，串起客廳和中島。7. 皮革餐椅、中島檯面與鍍鈦櫃體材質雖相異，但調性彼此互映。

4. Floor plan. 5. The unalterable architectural structure became a unique highlight of the project through material cladding and plane transition. 6. The dining space is the core of the project, and the large-scale dining table is regarded as pivot point in space, connecting the living room and the kitchen island counter. 7. Although the materials of the leather dining chairs, island countertop and titanium-plated cabinets are different, the tonality complements each other.





6



7



8

8. 鍍鈦自帶一股光澤特質，朦朧的反射更提點出視覺變化。9. 主臥室。未見複雜的裝飾元素，在放鬆的環境沉澱心緒。10. 公私領域的語彙呈現相似，簡淨舒暢。

8. Titanium plated finish contains a lustrous quality, and the hazy reflection highlights the visual changes. 9. The master bedroom is devoid of complicated decorative elements, allowing the mood to settle in a relaxed environment. 10. The vocabulary of the public and private domains share similar concise and comfortable characteristics.

As a family home that condenses the affections of three generations, this project is full of exquisite details under the introverted spatial structure, setting off emotional communication between the family members.

Chief Designer Shen mentioned that the project is located on the upper floors of a high-rise residential building with a generous floor plate square footage. The magnificent city skyline scenery outside the window is the most vibrant backdrop for daily life.

Since the overall project is connected by multiple units, how to propose a comprehensive plan under the constraints of the existing structural elements was the starting point for the design team. The owner expected the designer to highlight the spaciousness of the interior, showcasing the stylish dwelling while maintaining a touch of luxury elegance.

Transform Limitations become features

Shen responded to the expectations through rigorous and delicate design. As the members of the family are composed of elders, an owner couple, daughter and pet cat. According to the living needs of the family, it is planned as a four-bedroom and two-living space pattern, and the shared core area is reserved for family activities. The wide-scaled corridor not only links the public and private areas, but also plays the role of a transitional zone for changing moods, cleverly creating a spacious and vibrant home.

As the occupants cover different age groups and in consideration of the beliefs and habits of the elders, the design team arranged the elder parent room and the prayer hall next to each other to meet her spiritual worshiping requirements. The floor finish is deliberately kept with no height difference throughout the entire house, and an anti-slip flooring texture was applied to ensure the safety.

Shen further shared that in his eyes, the space is like a giant canvas, and every stroke profoundly depicts the harmony and warmth of the family. The structural constraints mentioned above became one of the main features of the design under his ingenious interpretation. Adhering to the principle of "functional artistry," the designer transformed the inevitable columns and beams into the framework of the space that also quietly plays the role as spatial demarcation. While strengthening the structure as a design strategy, it is also necessary to consider the continuity and coordination of the overall spatial perception.

建材分析 Material Analysis

1. 溫暖木質和精緻石材襯托出室內簡約又富含肌理層次的調性。2. 鍍鈦、不鏽鋼、皮革的運用，深化了空間典雅奢華的氣質。3. 家具型態俐落，與硬裝個性相映成趣。

1. Warm wood texture and delicate stone set off the simple and textured tonality of the project. 2. The use of titanium, stainless steel and leather finishes enhances the elegant and luxurious character of the space. 3. The simple and stylish furniture selection complements the interior finishes.

溝通重點 Communication Note

1. 作為多戶型打通的空間，無法更動的樑柱限制該如何轉化為特色，成為設計團隊面對的首要難題。2. 設計師以轉折、包覆的手法突顯既有結構，讓其化身為住宅框景，而非一味嘗試消弭它們的存在。3. 由於居住者年齡跨度較大，需格外注意長者的居住安全。4. 透過量體、結構的靈活安排，創造無形的場域分界，卻又保有一體性。

1. As a multi-units space, how to transform the existing structural restrictions into features became the prime challenge faced by the design team. 2. The designer used twist and a wrapping design language to highlight the existing structure, so that could be transformed into a dwelling framework, rather than blindly trying to conceal the existence. 3. Considering the large age span of the residents, special attention should be paid to the safety of the elderly. 4. Thoroughly reorganize of volume and structure to create an open plan with silent spatial demarcation.



9



10



Materials expression

In addition to the reshaping of the limitations of the existing structure, this project also actively explores the contrast and interaction between "volume" and "permeation". After entering the space, a titanium-plated cabinet mass comes into view, becoming the important pivotal point of the space. The designer deliberately gave it a suspended floating appearance that adds a dynamic feeling, that also maintains a balance between openness and privacy, between the virtual and the real.

The owner prefers neutral to dark colors and a discreet style of luxury details, therefore the designer Shen used warm textured wood and delicate natural stone for the overall finishes of the space, and then highlighted the graceful luxury quality through the hazy titanium plating reflection. The use of tiles is also full of the ingenuity of the design team, using collage techniques to enhance the visual rhythm.

The exclusive bedroom design closely follows the different needs of the residents, aiming to highlight each person's characteristics. The master bedroom consists of a simple and calming charm that matches the personality of the couple, minimizing the intricate elements and creating a resting environment for body and mind; The daughter's room is finished with special paint and stainless steel vocabulary, which combines a conflicting aesthetic that is both warm and cold, symbolizing her young and fashionable personal charisma.

The harmonious combination

Considering that the interior has a rich composition, therefore the furniture selection focused on the simple and classic, with a color scheme closely coordinated with to the space. The dark dining table is seen as focal point in the public area, while the leather dining chairs and titanium-plated cabinets complement each other, creating a unique taste through the deployment of different materials.

With the excellent natural light advantage, the designer anticipated the artificial light source to play the role of leading the rhythm of the space; to highlight the existence of the volume. A Lutron dimming control system was installed to meet the residents' needs for various atmospheric creations. Through the free adjustment of lumens, combined with aesthetics and practicality, it perfectly reflects the owner's pursuit of the ideal home.

11.12. 女兒房。塗料跟不鏽鋼碰撞出溫馨又時尚的反差美感。13.14. 衛浴空間。

11.12. Daughter's room. The use of finish materials and color dissimilarity create a warm and fashionable contrasting beauty. 13.14. View of the Bathroom.

