

Gathering Ground

聚域

設計者」石坊空間設計研究 / 郭宗翰
參與者」石坊空間設計研究團隊
攝影者」李國民 SAM
空間性質」住宅
坐落位置」台灣
主要材料」實木木皮、石材、訂製鍍鈦金屬、特殊漆、
拼花木地板
面積」110 坪

Designers」 M. Design / Stephen Kuo
Participant」 Team members of M. Design
Photographer」 Lee Kuomin Photography Studio, SAM
Category」 Residence
Location」 Taiwan
Materials」 Veneer, stone, titanium member, special paint, parquet
flooring
Size」 363.6m²



讓場域相互共融、延伸，用弧線強化「團聚」意象，形塑三代同堂的安居宅。

郭宗翰設計師主張，家的面貌是從日常裡塑成的有機風景，餘裕的空間感有如土壤一般，能涵育居住者的理想，以及不同階段的家庭成長。這是一座位在高樓的住宅，在海外工作的屋主，特地為家人購置一座新屋，希望用開闊的空間感，以及緊密家人情感的整體規劃，給予全家人舒適的生活環境。



2

Stephen Kuo



石坊空間設計研究 / 郭宗翰
英國倫敦藝術大學 · 空間設計學系
英國北倫敦大學 · 建築設計研究所
台北實踐大學 · 設計學院講師
2002 創辦石坊空間設計研究迄今
郭宗翰擅長運用優美的線性語彙及豐腴的異性材質營造出精緻純粹、優雅大器的哲性空間，並賦予空間獨具生命力之氛圍。郭宗翰認為設計是簡化出空間裡最關鍵的元素，而不是將所有細節都植入空間，強調設計既是生活經驗的延伸，也是欣賞美態的態度，藉由人文厚度的植入，構建空間生活的哲學，創造人們對空間美學的無限想像。

M. Design / Stephen Kuo
University of the Arts London ·
Department of Spatial Design.
University of North London · Institute of
Architectural Design.
Lecture, Shih Chien University
Founder and director, M. Design
Stephen excels in utilizing a graceful
linear vocabulary in contrasting materials
to create refined, pure, and elegantly
grand philosophical spaces, imbued with
unique, lively atmospheres.

1. 玄關區設下弧形屏風維繫家居隱私，同時將動線引流至共享廳區。
2. 平面圖。

1. A curve wall protects privacy and
guides the view into the living zone.
2. Plan.



3.4. 廳區利用弧牆的微包覆感，將大窗注入的光線反射的更加明亮。
3.4. Curved wall wraps a space while gathering natural light in a gentle style.



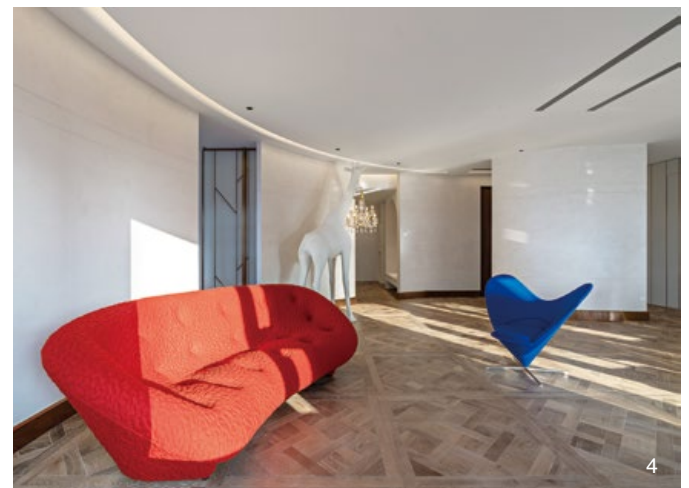
強化團聚意象

這座住宅享有 L 型窗帶，室內擁有良好採光，在新規劃上，屋主除了希望能具備寬敞的共享空間，同時也要備置四房兩廳以因應三代同堂的實質需求。因屋主家中育有幼兒，且考量家庭未來的人口成長與使用彈性，設計師將開放式餐廚和廳區相融為一座共享空間，打破各廳壁壘分明的舊況，重視動線寬敞與視野通透，令場域彼此能相互共融、延伸，不僅是家人的相聚交流之地，開闊無障礙的動線與空間感也能滿足長者與孩童對居家安全的需求。

為了強化「團聚」意象，設計師用弧形立面引導空間動線，玄關區先布下一道弧形屏風遮蔽外來視線，同時將動線引流至裡部的共享廳區。廳區周邊以弧線作為公私場域的劃界，突顯場域開闊大器之感，也利用弧曲圍塑的微包覆造型，更好地回應大窗注入的採光優勢，將光線反射的更加勻亮。在弧牆或斷或連的走向裡，視線也隨之時透時蔽，公私領域不僅顯得層次分明，虛與實、透與止，都隨著行走過程的環顧而變化，帶來了多角度的閱讀趣味。

體貼入微的私領域

私空間主要配置在右側窗帶，兩間長輩房規劃在角落兩端，確保睡寢時環境的寧靜。主臥套房與書房則包夾在中段，是出入最頻繁的私空間，能就近連通共享廳區，同時也方便父母看顧幼童。設計師採用滑軌門片區隔書房，現階段可將門片收隱至牆內，把書房和廳區串連，作為遊戲室或書房彈性應用，日後亦可獨立作為小孩房使用。





5. 開放式廚區讓長輩在享受烹飪樂趣時，也能與家人交流。6. 運用特殊漆的手作溫度飽滿空間表情。7. 客廳選用精緻的馬賽克磚鋪陳立面表情。8. 弧牆的連續或開口讓視線時透時蔽，帶來多角度的閱讀趣味。9. 書房也是遊戲室，亦是為未來預留的兒童房。
5. Open style kitchen invites family members to join together. 6. Hand painted texture on the wall surface. 7. Mosaic is used in the guest lavatory. 8. Curved wall brings a view that either embraces or penetrates. 9. Reading room is also a space for the children's playroom.

臥房區前特意規劃一座親子空間，配置書架牆與坐區，這座寧靜且舒適的閱讀角落，吸引親子在此浸淫書香樂趣，宴客時孩童能有一處安全的遊戲空間，平日就寢前祖孫也可以在這方天地享受親密的談心時光。書房與親子閱讀角的書櫃均採用顧及孩童身型尺寸的通用設計，讓幼童與長者能輕鬆地取閱書籍。

純粹裡現繁麗

從事藝術創作的屋主，鍾情色彩飽滿、造型獨特的收藏家具，設計師除了以純粹背景作為相襯，也藉著色彩、物料的輕重對比形塑家居個性，讓設計選物與素潔空間互為平衡。

設計師希望儘可能純化整體色彩，採用特殊漆鋪陳簡潔且連綿的背景，藉由漆料的手作質感飽滿畫面表情，讓純粹與溫度意喻屋主為家人打造新居的初心。細節上，牆面鑲入鍍鈦金屬線條勾勒結構，為純淨背景增添裝飾效果，暖色鍍鈦金屬能隱隱折射光線，增添空間整體的精緻度，精選的實木拼花地板更為家居鋪入優雅底襯，在在說明屋主重視細節與高質感生活的特質。

回顧全作，設計師思量居住者現今需求與未來可能，用理性思路籌理全作，並融入屋主的感性初衷、每位家庭成員對新居的期望，在輕盈而優雅的筆觸下，將純淨與繁麗並蓄，釀構出屬於這個家的個性風景，使家人的相聚之域生成與眾不同的面貌。採訪 | 室內雜誌編輯部

Stephen believes that the character of a home is shaped by the organic landscape of everyday life, nurturing the inhabitants' ideals and supporting the growth of the family through different stages. The homeowner purchased an apartment on a high floor, aiming to create a sense of spaciousness that fosters emotional connections among family members and provides a comfortable living environment for everyone.

Reunion

This residence features L-shaped windows, providing excellent indoor natural lighting. The homeowner not only wanted a spacious shared living area, but also required four rooms to accommodate the needs of a multigenerational family. With young children in the household and future family growth in mind, the designer merged the kitchen, dining, and living areas, breaking down traditional room separations. The design prioritized wide circulation paths and open sightlines, making the space a gathering place for family interactions while also ensuring safety for both the elderly and young children.

To enhance the sense of "reunion," the designer introduced a curved wall to guide spatial flow. At the entrance, a curved screen shields the interior from outside views while directing the eye towards the main living area. The curve emphasizes an expansive and grand atmosphere, creating a sense of enclosure that further enhances the advantage of the large windows' natural light. This curved wall allows the gaze to partially penetrate while partially enclosing the space, clearly distinguishing public and private areas, bringing multi-dimensional spatial interest and depth.





10

10. 臥房區前規劃一座親子空間，讓祖孫睡前可以在這裡享受交流談心時光。11. 長輩房衛浴選用石材鋪砌，簡潔大器。12. 長輩房以鍍鈦金屬線條、石紋來分割立面，同時將收納規劃隱於其中。13. 主臥房天花板採用弧線勾勒，延續「團聚」意象。14. 主臥規劃更衣室與衛浴空間，個性化的色彩與線條，呼應使用者特質。

10. An intimate corner offers quality space for parents and children to gather. 11. The parent's bathroom is clad in stone, offering a clean and grand aesthetic. 12. Parent's room. 13. Master bedroom and its ceiling motif. 14. Master bathroom and closet room rendered in colors appreciated by the homeowner.

Thoughtful Private Spaces

The private areas are primarily arranged on the right side of the residence. Two elder bedrooms are placed at opposite corners to ensure a quiet environment for rest. The master suite and study are located in the middle section, conveniently connected to the shared living area, allowing parents to easily monitor their children. A sliding door separates the study, but it can also open to connect with the living area, offering flexible use as a playroom and, in the future, as a child's bedroom.

In front of the bedroom area, a parent-child space is thoughtfully designed, featuring a bookshelf wall and seating area, creating a cozy reading nook. During gatherings, this area serves as a safe play space for children, and on regular evenings, it provides a warm spot for grandparents and grandchildren to enjoy time together. Both the study and the parent-child reading nook feature universal-design bookshelves, ensuring easy access to books for both young children and elderly family members.

Pure and elegance

The homeowner, an artist, has a passion for vibrant colors and uniquely designed furniture. The pure and simple backdrop contrasts with the distinctive, bold furniture pieces, creating a unique sense of balance.

The walls are treated with a special paint that provides a clean, minimalist background while offering a tactile warmth through the texture of the finish. Embedded titanium-plated metal details add decorative elements to the otherwise pure surface. The warm-toned titanium subtly reflects light, enhancing the overall refinement of the space. The carefully selected parquet flooring further elevates the elegance, laying a graceful foundation that exudes high-end taste.

This design not only meets the family's current needs but also adds a distinct charm to their gatherings, creating an atmosphere rich in warmth and character.

建材分析 Material Analysis

1. 實木拼花地板：紋理鮮明且作工精緻，為空間鋪入優美底襯。2. 特殊漆：為空間統整純淨背景，展現手作溫度。3. 鍍鈦金屬線條：嵌入立面增添細節質感，回應光照。

1. Solid Wood Parquet Flooring: features distinct, vivid grain patterns with exquisite craftsmanship. 2. Special Paint: Creates a unified, pure background for the space, exuding a handcrafted warmth. 3. Titanium-Plated Metal Lines: Embedded in the walls to enhance the space with refined, detailed textures.

溝通重點 Communication Note

1. 希望家居開闊明亮，同時具備質感細節。2. 家中有長者與幼兒，需注意無障礙規劃與居家活動安全。3. 屋主喜愛色彩飽滿且具造型設計的家具、家飾，希望能融入整體設計裡。

1. The space should be open and bright while incorporating refined details that enhance the overall texture and quality of the environment. 2. With elderly family members and young children in the household, accessibility and home safety must be a priority in the design to ensure smooth movement and secure living conditions. 3. The homeowner loves vibrant colors and uniquely designed furniture and décor and wished these elements would be seamlessly integrated into the space design.

